

REPORT PLATES



KEY TO FEATURES:

FEATURE
NUMBER

FEATURE
DESCRIPTION

I

LOCATION OF FORMER BOMBING TARGET
(NOT SEEN ON PHOTO) WITH TRAILER PARK

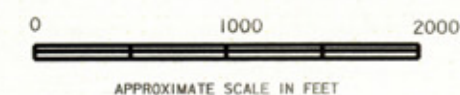
LEGEND



SITE LOCATION



FEATURE LOCATION



U.S. ARMY CORPS OF ENGINEERS
ST. LOUIS DISTRICT

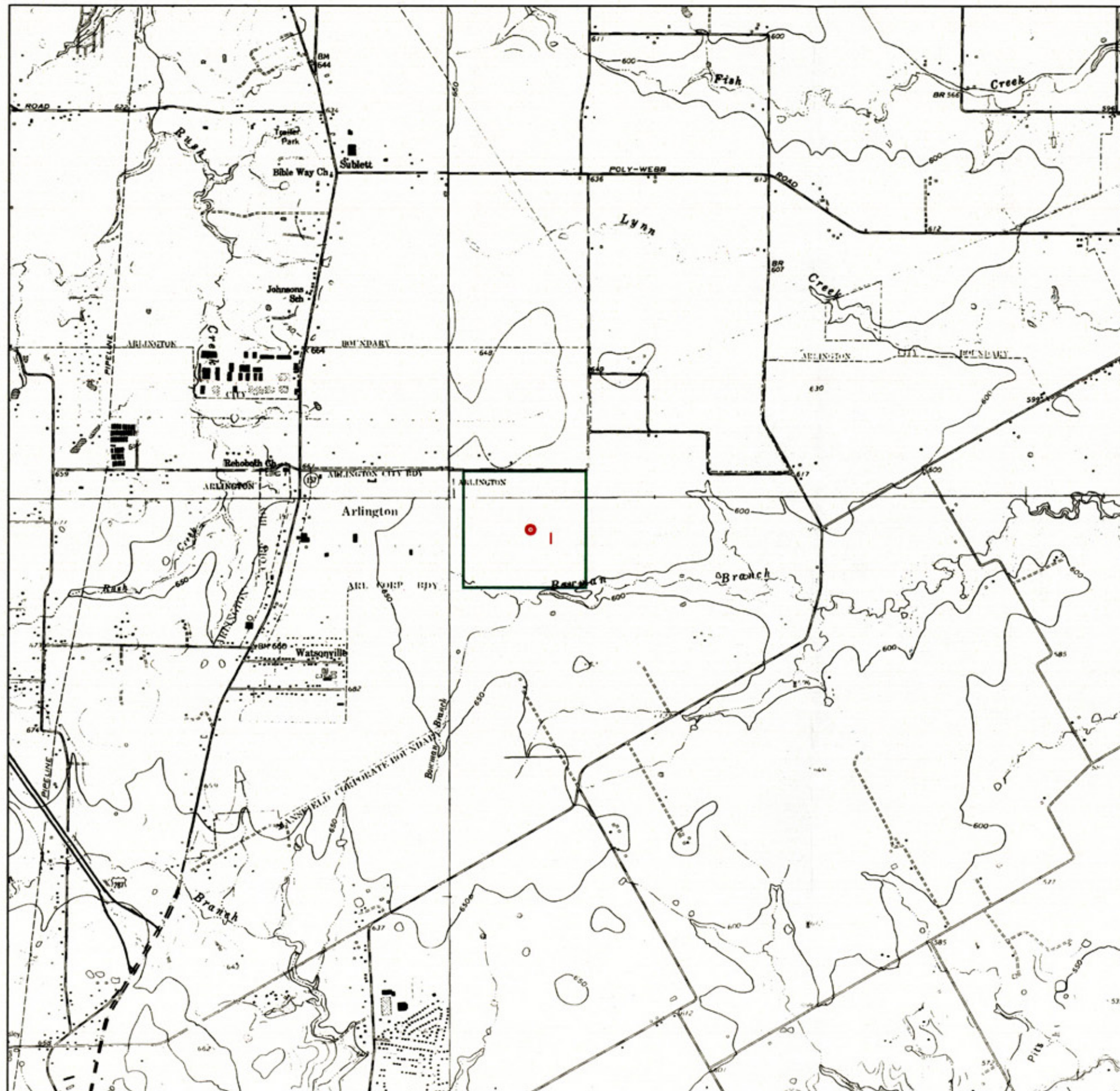
FIVE POINTS OUTLYING FIELD
ARLINGTON, TEXAS
TARRANT COUNTY
PROJECT •K06TX002801

1990 AERIAL PHOTO

PROJ. DATE: MARCH, 2001
24-JAN-2002 10:07

DATE OF PHOTO: 1990
m:\oew\2000\TEXAS\Twpark\photo\90park.dgn

PLATE NO. 3



KEY TO FEATURES:

FEATURE
NUMBER

FEATURE
DESCRIPTION

1

LOCATION OF FORMER BOMBING TARGET
(NOT SEEN ON PHOTO) WITH TRAILER PARK

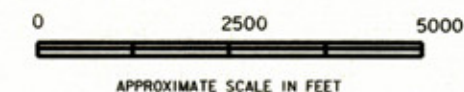
LEGEND



SITE LOCATION



FEATURE LOCATION



U.S. ARMY CORPS OF ENGINEERS
ST. LOUIS DISTRICT

FIVE POINTS OUTLYING FIELD
ARLINGTON, TEXAS
TARRANT COUNTY
PROJECT •K06TX002801

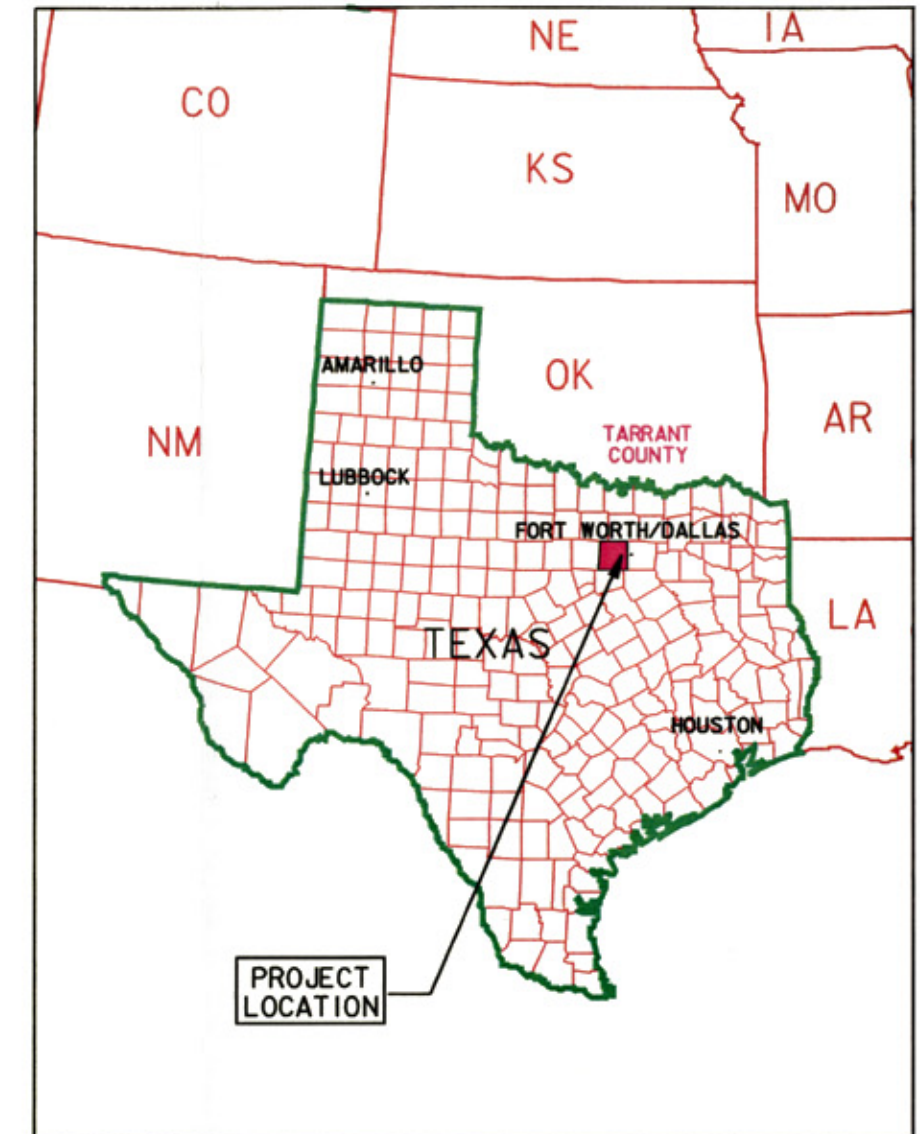
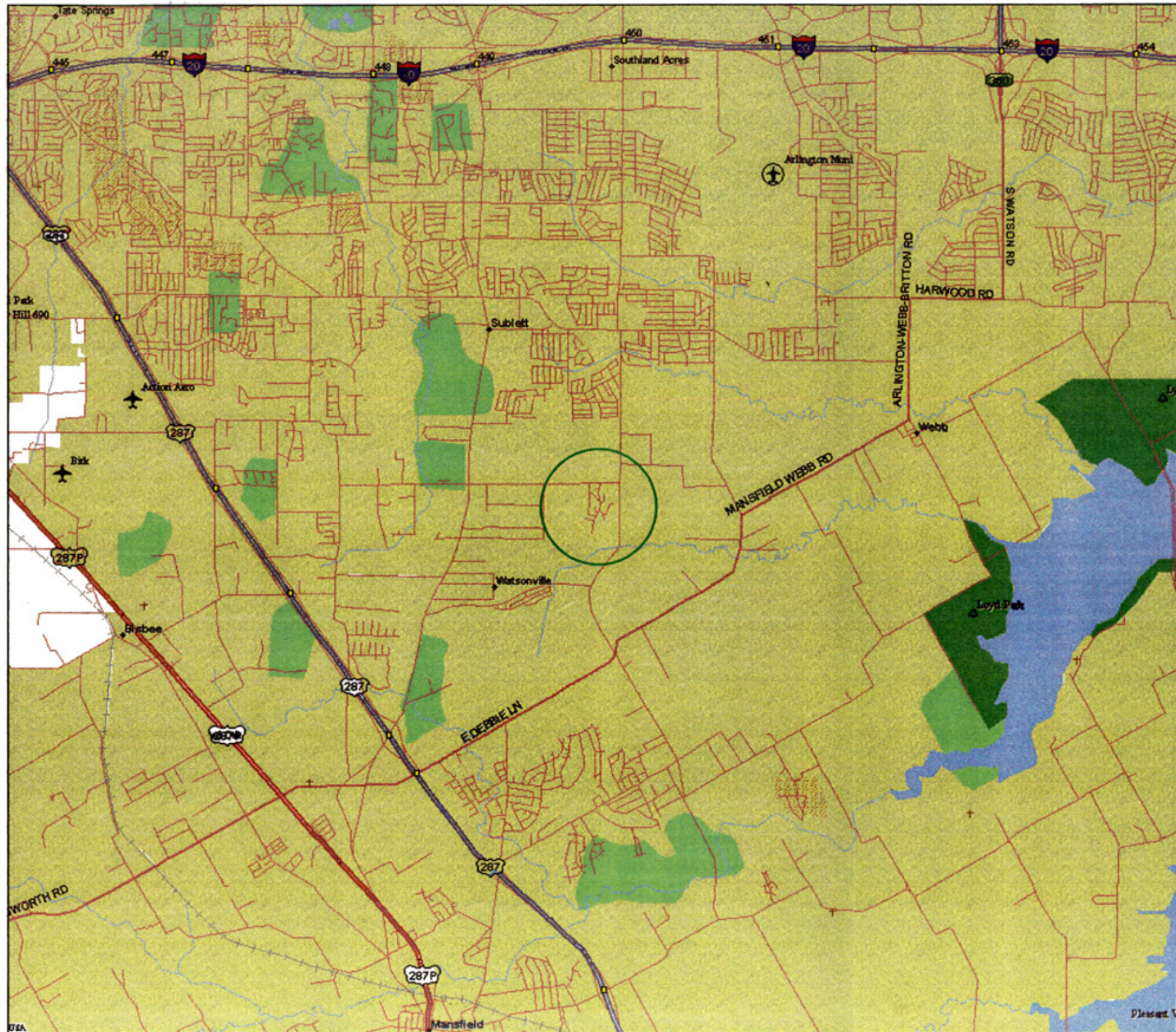
SITE MAP

PROJ. DATE: MARCH, 2001
24-JAN-2002 09:51

DATE OF QUAD: 1981

mtoew2000\TEXAS\Twinpark\map\parksite.dgn

PLATE NO. 2



LEGEND

 SITE LOCATION



U.S. ARMY CORPS OF ENGINEERS
ST. LOUIS DISTRICT

FIVE POINTS OUTLYING FIELD
ARLINGTON, TEXAS
TARRANT COUNTY
PROJECT *K06TX002801

VICINITY MAP

PROJ. DATE: MARCH, 2001

DATE OF MAP: 1996

24-JAN-2002 09:41

ms02ew20001TEXAS11wlpark1map1park1v1.dgn

PLATE NO. 1