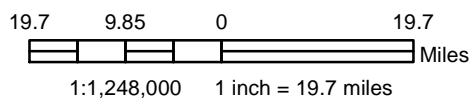


This map is intended for planning purposes only. All map data should be considered preliminary. All boundaries and designations are subject to confirmation.

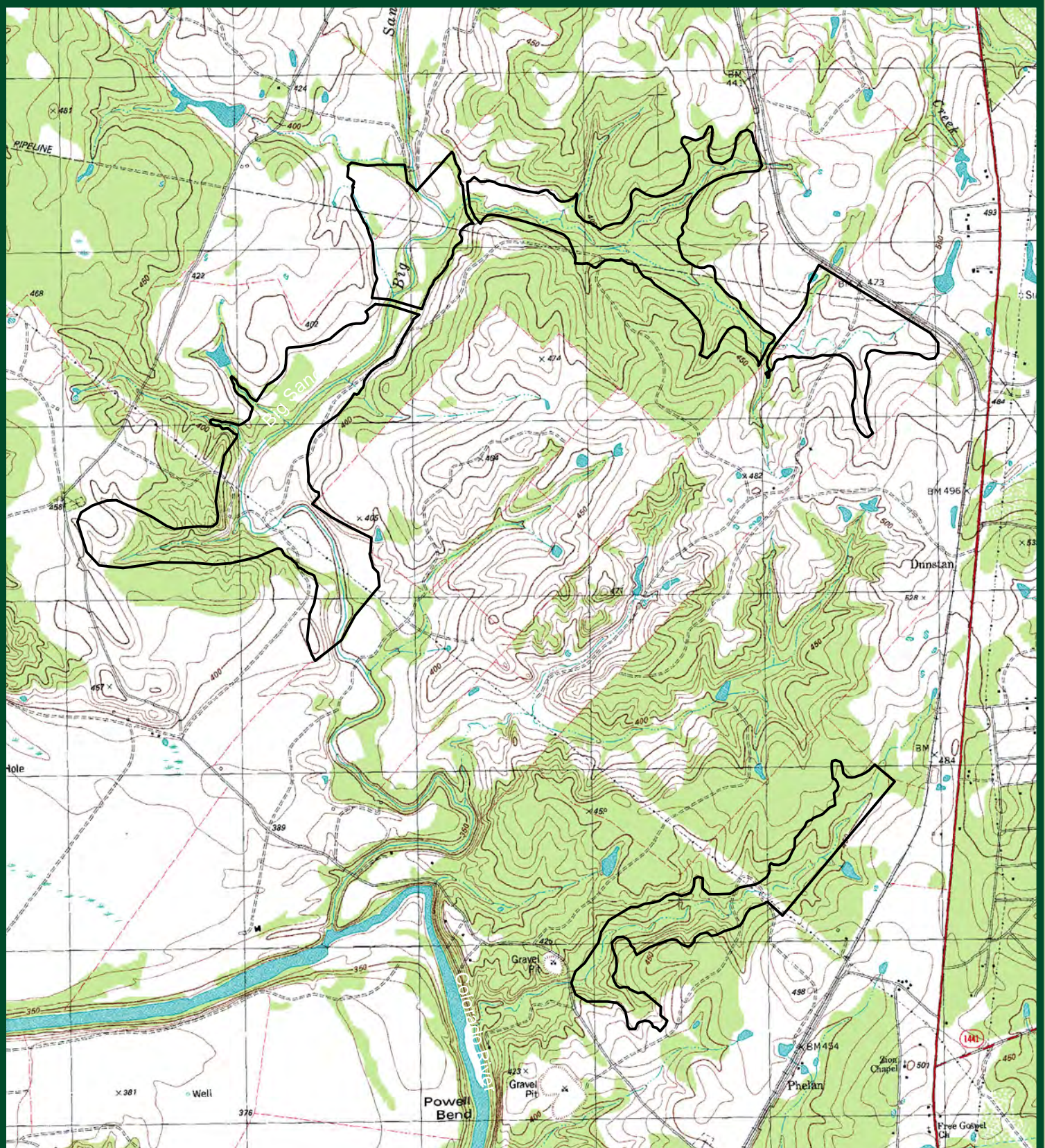


Mitigation Bank



XS Ranch Mitigation Bank
Figure 1: Bank Site

January 2013



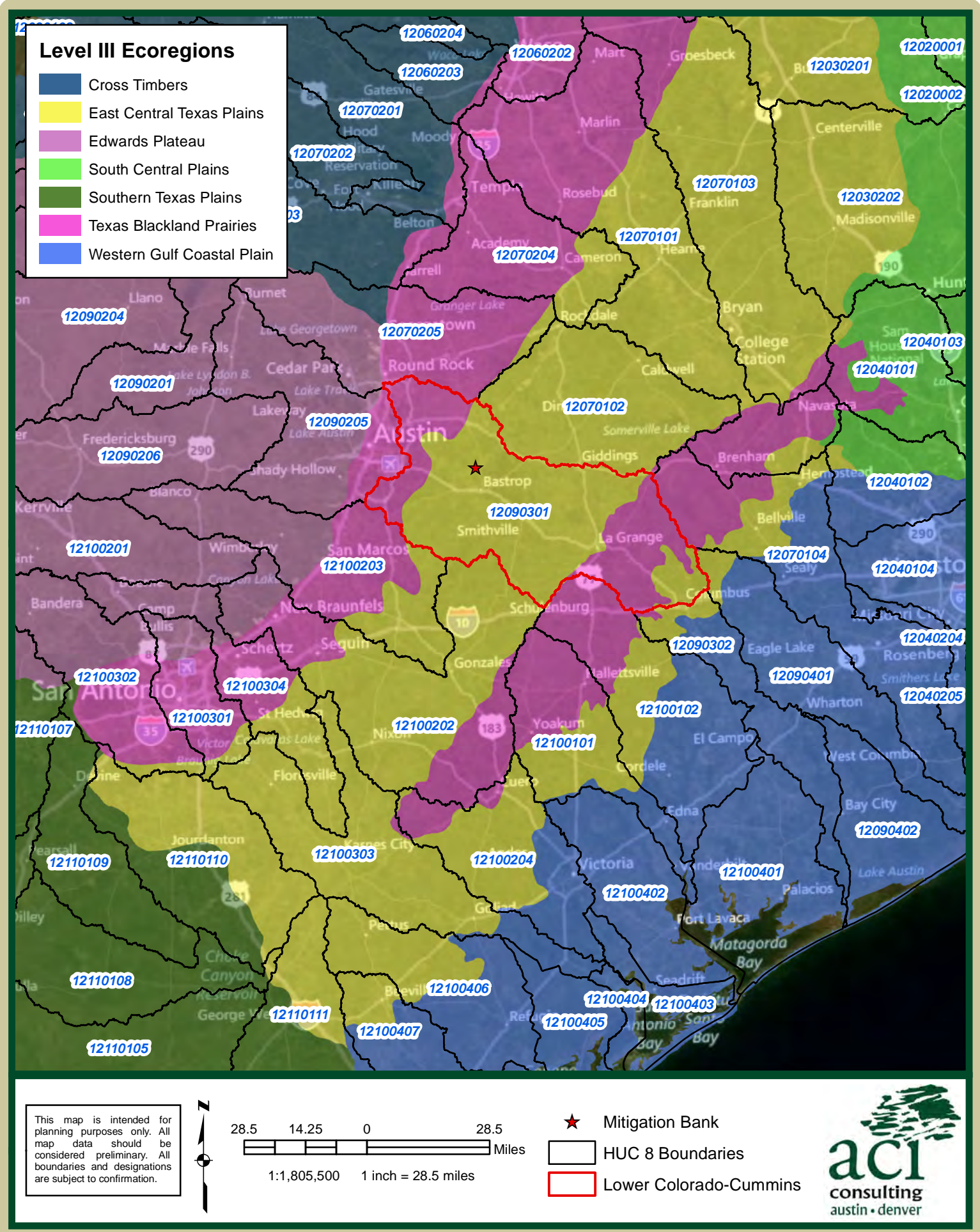
This map is intended for planning purposes only. All map data should be considered preliminary. All boundaries and designations are subject to confirmation.



2,500 1,250 0 2,500
 1:30,000 1 inch = 2,500 Feet

 Mitigation Bank

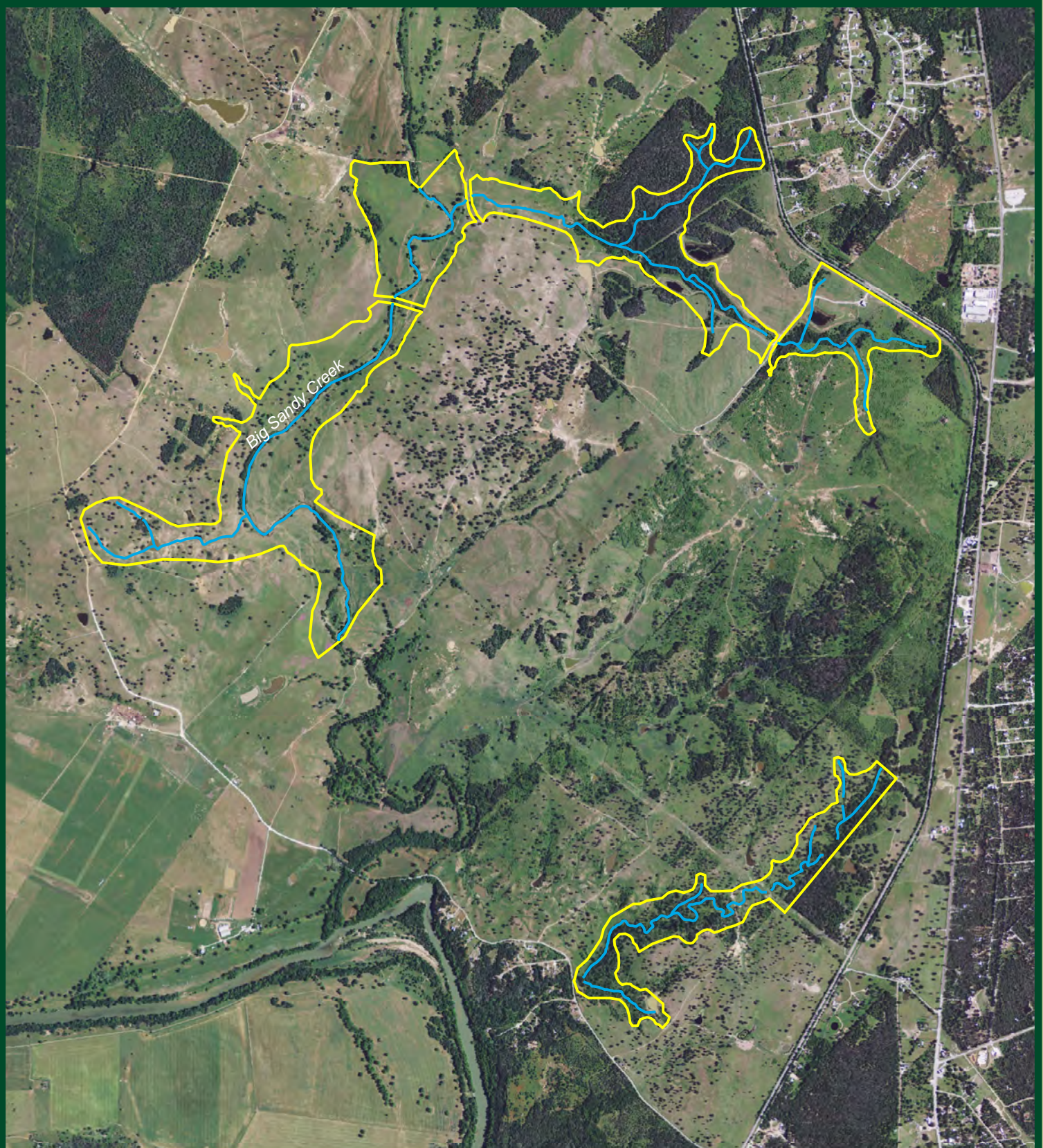




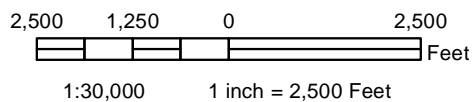
XS Ranch Mitigation Bank

January 2013

Figure 3: Level III Ecoregion (Omernik) and USGS 8-digit Hydrologic Unit Codes (HUC)



This map is intended for planning purposes only. All map data should be considered preliminary. All boundaries and designations are subject to confirmation.

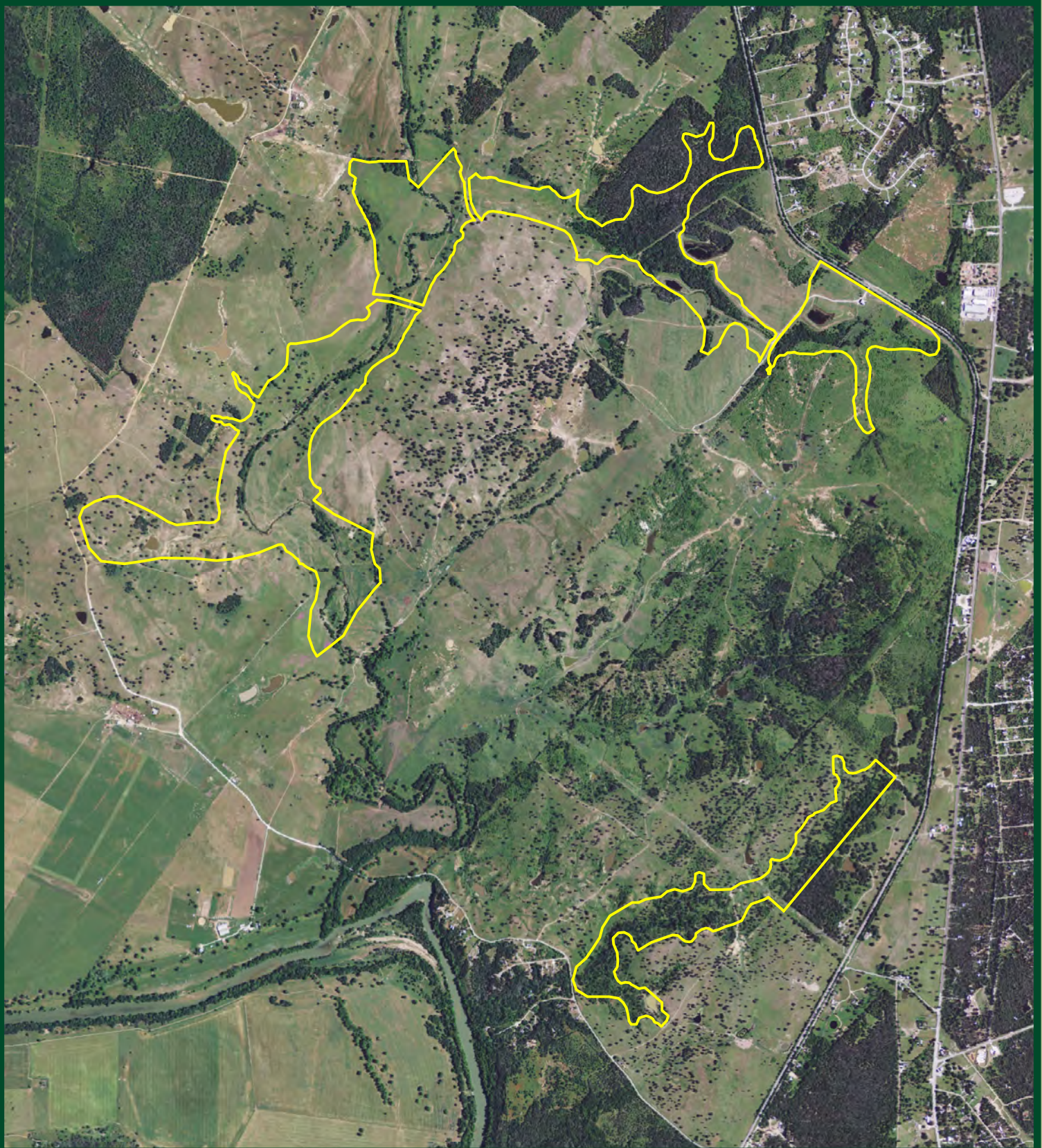


- Mitigation Bank
- Jurisdictional Stream

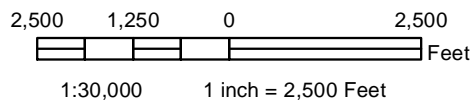


XS Ranch Mitigation Bank
Figure 4: Jurisdictional Streams

January 2013



This map is intended for planning purposes only. All map data should be considered preliminary. All boundaries and designations are subject to confirmation.

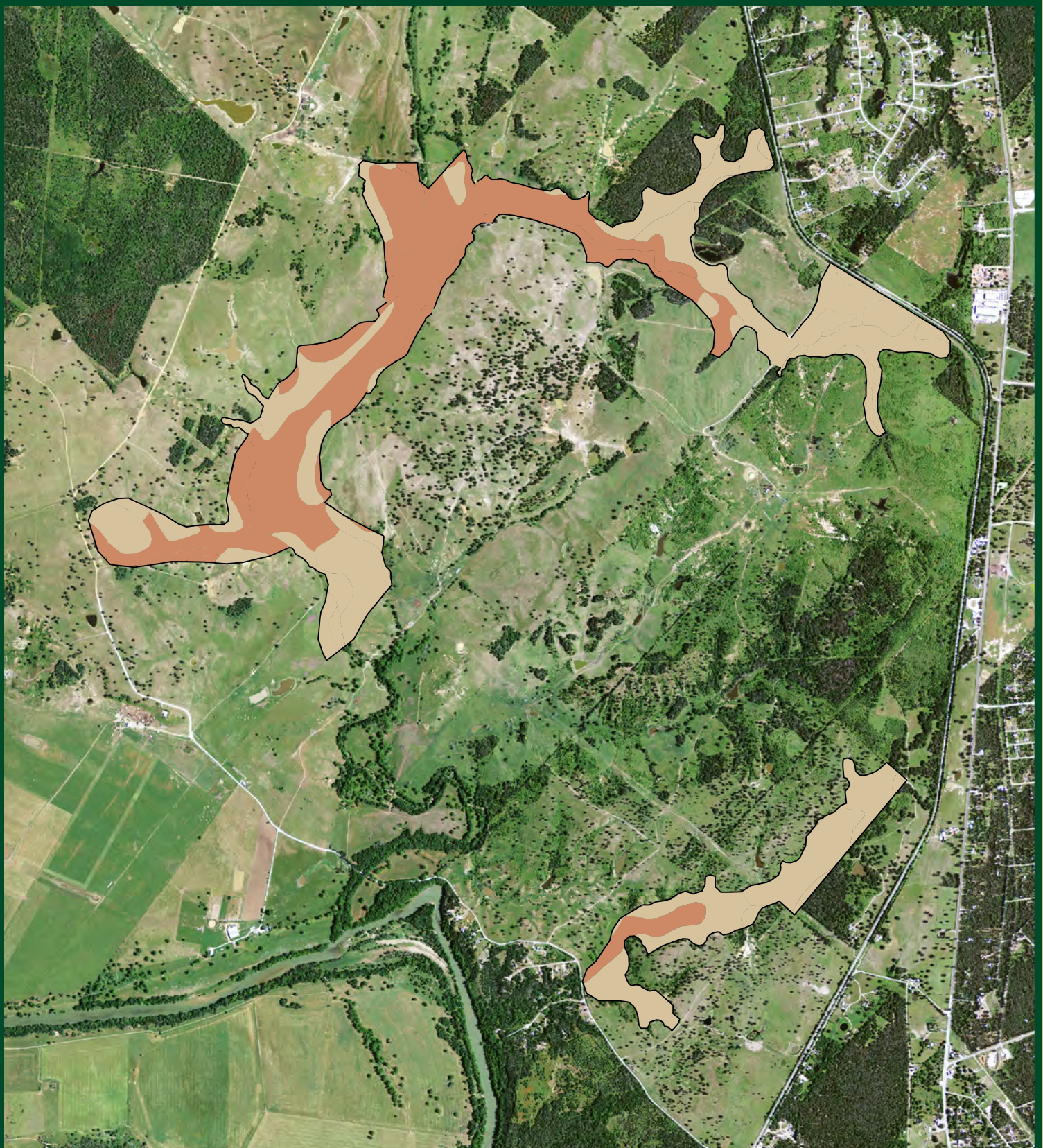


Mitigation Bank



XS Ranch Mitigation Bank
Figure 5: Mitigation Bank Area

January 2013



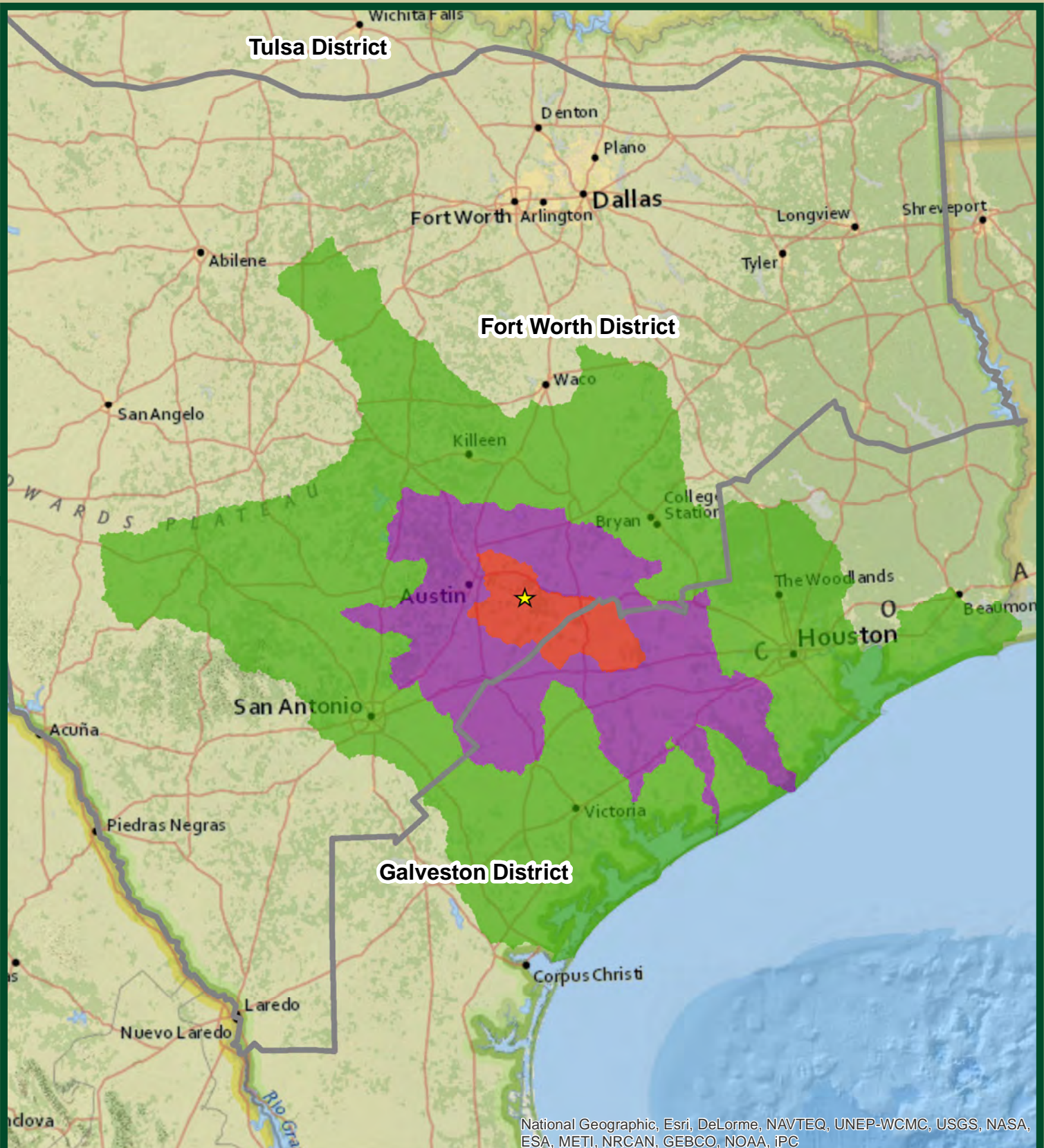
This map is intended for planning purposes only. All map data should be considered preliminary. All boundaries and designations are subject to confirmation.



2,500 1,250 0 2,500
 1:30,000 1 inch = 2,500 Feet

Patilo-Demona-Silstid Association
 Axtell-Tabor Association





This map is intended for planning purposes only. All map data should be considered preliminary. All boundaries and designations are subject to confirmation.



59.3 29.65 0 59.3
Miles
1:3,757,500 1 in = 59.3 miles

- ★ Site
- Primary Service Area
- Secondary Service Area
- Tertiary Service Area
- USACE District Boundaries



XS Ranch Mitigation Bank
Figure 7: Proposed Service Areas

January 2013