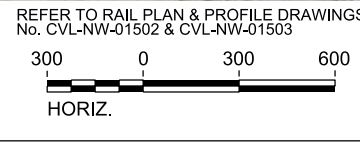


MATCHLINE SEE SHEET 404-NW-02002

PLOT BY: NYPWICS01S PLOT TIME: 10/13/2017 1:31:34 PM

RAIL CONSTRUCTION TYPE	PERMANENT IMPACTS	TEMPORARY IMPACTS	OTHER
CUT	EMERGENT WETLAND	EMERGENT WETLAND	LIMITS OF DISTURBANCE (CONSTRUCTION FOOTPRINT)
EMBANKMENT	FORESTED WETLAND	POND	PERMANENT UTILITIES IMPACTS
RETAIN FILL	POND	STREAMS	TEMPORARY UTILITIES IMPACTS
RETAIN CUT	SCRUB/SHRUB WETLAND	OTHER IMPACTS	ROADWAY IMPACTS
VIADUCT	STREAMS	CONVERSION WETLAND	CULVERT FLOW
			PIER LOCATIONS

- NOTES:**
- POTENTIALLY NON-JURISDICTIONAL WATERBODIES DO NOT INCLUDE IMPACT QUANTITIES.
 - P = PERMANENT IMPACT
 - T = TEMPORARY IMPACT
 - ES = EPHEMERAL STREAM
 - IS = INTERMITTENT STREAM
 - PS = PERENNIAL STREAM
 - C = CONVERSION
 - TEMPORARY, PERMANENT AND CONVERSION IMPACTS ARE SUMMED UP IN ONE CALLOUT BOX FOR EACH FEATURE.
 - UTILITY AND TEMPORARY CONSTRUCTION IMPACTS DO NOT REFERENCE A DETAIL.
 - DRAWINGS ARE PRINTED AT HALF-SIZE (11X17).



REV	DATE	BY	CHK	APP	DESCRIPTION

DESIGNED BY
R. ZARATE

DRAWN BY
J. HUFNAGEL

CHECKED BY
R. ALDREDGE

IN CHARGE
R. ZARATE

DATE
OCT. 2017

DALLAS TO HOUSTON
HIGH-SPEED RAIL
APPLICANT: TCRR
SWF-2011-00483

ARUP

Arup Texas, Inc.
10370 Richmond Ave., Suite 475
Houston, Texas 77042 USA
Tel (713) 783 2787 Fax (713) 343 1467
www.arup.com
Texas Registered Engineering Firm: F-1990

FREESSE & NICHOLS

2711 North Haskell Ave., Suite 3300
Dallas, Texas 75204
Tel (214) 217 2200 Fax (214) 217 2201
www.freesse.com
Texas Registered Engineering Firm: F-2144

Client

1409 South Lamar Street, Suite 1022, Dallas, Texas 75215

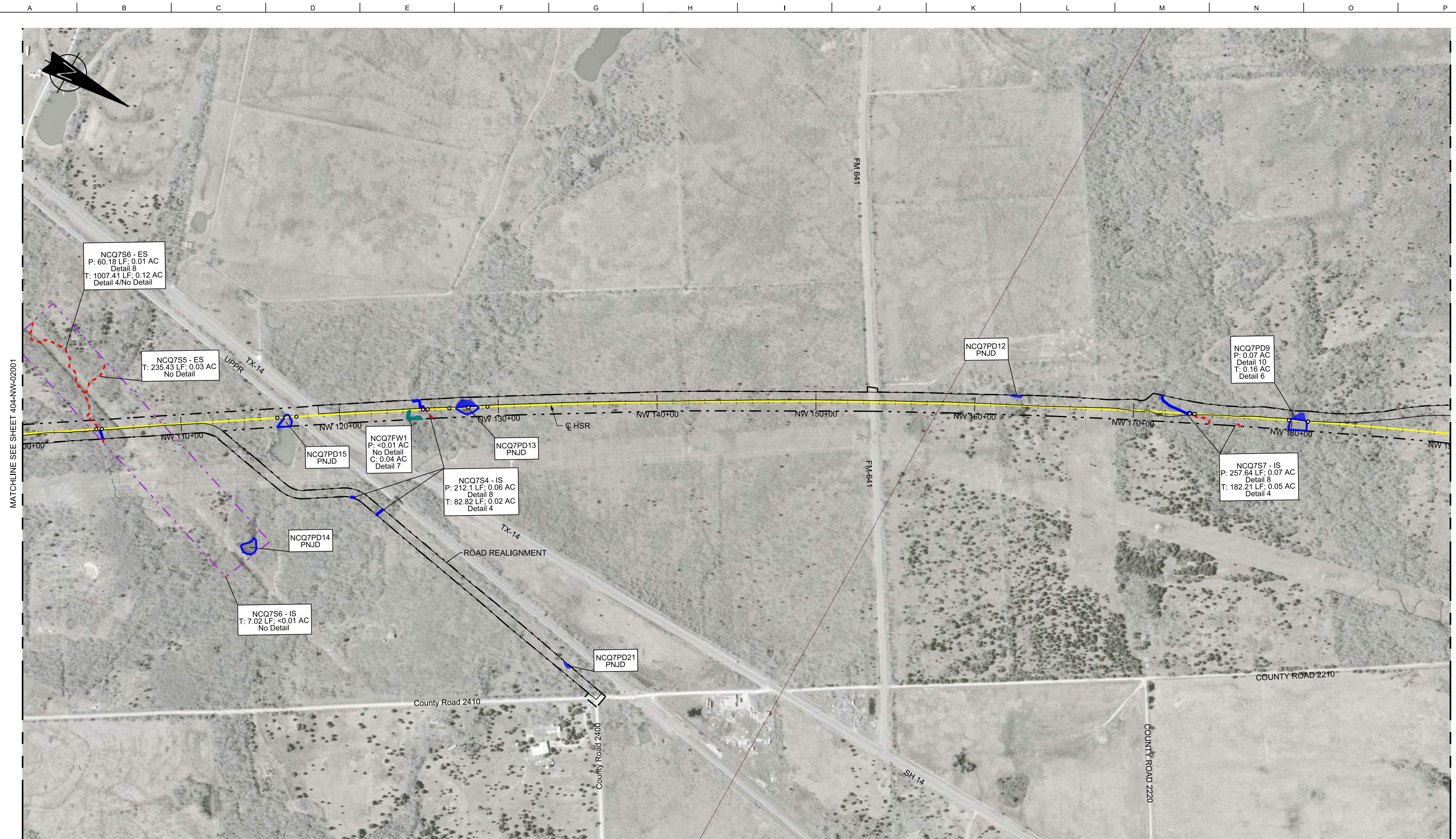
Drawing Title
NAVARRO WEST SEGMENT

PLAN VIEW (FRA SEG. 3A)
STA NW 10+00 TO 100+00

Scale
AS SHOWN

Drawing Status
NOT FOR CONSTRUCTION

Job No	Drawing No	Rev
234180	404-NW-02001	03



RAIL CONSTRUCTION TYPE	PERMANENT IMPACTS	TEMPORARY IMPACTS	OTHER
CUT	EMERGENT WETLAND	EMERGENT WETLAND	LIMITS OF DISTURBANCE (CONSTRUCTION FOOTPRINT)
EMBANKMENT	FORESTED WETLAND	POND	PERMANENT UTILITIES IMPACTS
RETAIN FILL	POND	STREAMS	TEMPORARY UTILITIES IMPACTS
RETAIN CUT	SCRUB/SHRUB WETLAND	OTHER IMPACTS	ROADWAY IMPACTS
VIADUCT	STREAMS	CONVERSION WETLAND	CULVERT FLOW
			PIER LOCATIONS

- NOTES:
- POTENTIALLY NON-JURISDICTIONAL WATERBODIES DO NOT INCLUDE IMPACT QUANTITIES.
 - P = PERMANENT IMPACT
 - T = TEMPORARY IMPACT
 - ES = EPHEMERAL STREAM
 - IS = INTERMITTENT STREAM
 - PS = PERENNIAL STREAM
 - C = CONVERSION
 - TEMPORARY, PERMANENT AND CONVERSION IMPACTS ARE SUMMED UP IN ONE CALLOUT BOX FOR EACH FEATURE.
 - UTILITY AND TEMPORARY CONSTRUCTION IMPACTS DO NOT REFERENCE A DETAIL.
 - DRAWINGS ARE PRINTED AT HALF-SIZE (11X17).

REFER TO RAIL PLAN & PROFILE DRAWINGS No. CVL-NW-01503, CVL-NW-01504, & CVL-NW-01505

300 0 300 600
HORIZ.

PLAN

REV	DATE	BY	CHK	APP	DESCRIPTION

DESIGNED BY
R. ZARATE

DRAWN BY
J. HUFNAGEL

CHECKED BY
R. ALDREDGE

IN CHARGE
R. ZARATE

DATE
OCT. 2017

DALLAS TO HOUSTON
HIGH-SPEED RAIL
APPLICANT: TCRR
SWF-2011-00483



Arup Texas, Inc.
10370 Richmond Ave., Suite 475
Houston, Texas 77042 USA
Tel (713) 783 2787 Fax (713) 343 1467
www.arup.com
Texas Registered Engineering Firm: F-1990



2711 North Haskell Ave., Suite 3300
Dallas, Texas 75204
Tel (214) 217 2200 Fax (214) 217 2201
www.freese.com
Texas Registered Engineering Firm: F-2144



Client
1409 South Lamar Street, Suite 1022, Dallas, Texas 75215

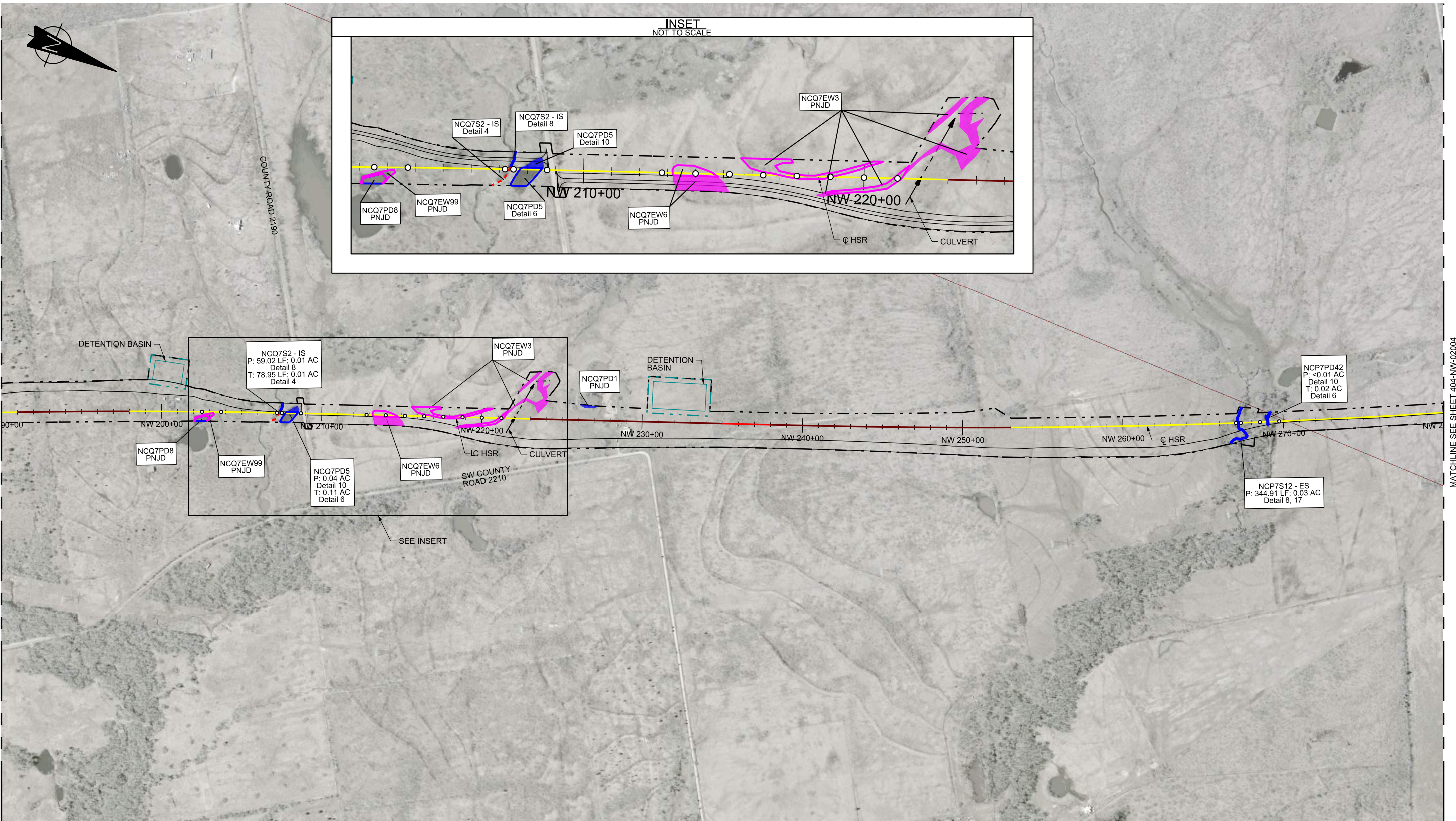
Drawing Title
NAVARRO WEST SEGMENT

**PLAN VIEW (FRA SEG. 3A)
STA NW 100+00 TO 190+00**

Scale AS SHOWN		
Drawing Status NOT FOR CONSTRUCTION		
Job No 234180	Drawing No 404-NW-02002	Rev 03

MATCHLINE SEE SHEET 404-NW-02001

MATCHLINE SEE SHEET 404-NW-02003

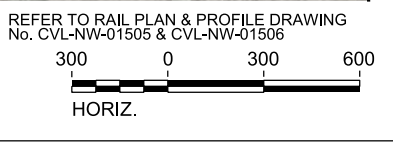


MATCHLINE SEE SHEET 404-NW-02002

MATCHLINE SEE SHEET 404-NW-02004

RAIL CONSTRUCTION TYPE	PERMANENT IMPACTS	TEMPORARY IMPACTS	OTHER
CUT	EMERGENT WETLAND	EMERGENT WETLAND	LIMITS OF DISTURBANCE (CONSTRUCTION FOOTPRINT)
EMBANKMENT	FORESTED WETLAND	POND	PERMANENT UTILITIES IMPACTS
RETAIN FILL	POND	STREAMS	TEMPORARY UTILITIES IMPACTS
RETAIN CUT	SCRUB/SHRUB WETLAND	OTHER IMPACTS	ROADWAY IMPACTS
VIADUCT	STREAMS	CONVERSION WETLAND	CULVERT FLOW
			PIER LOCATIONS

- NOTES:
- POTENTIALLY NON-JURISDICTIONAL WATERBODIES DO NOT INCLUDE IMPACT QUANTITIES.
 - P = PERMANENT IMPACT
 - T = TEMPORARY IMPACT
 - ES = EPHEMERAL STREAM
 - IS = INTERMITTENT STREAM
 - PS = PERENNIAL STREAM
 - C = CONVERSION
 - TEMPORARY, PERMANENT AND CONVERSION IMPACTS ARE SUMMED UP IN ONE CALLOUT BOX FOR EACH FEATURE.
 - UTILITY AND TEMPORARY CONSTRUCTION IMPACTS DO NOT REFERENCE A DETAIL.
 - DRAWINGS ARE PRINTED AT HALF-SIZE (11X17).



REV	DATE	BY	CHK	APP	DESCRIPTION

DESIGNED BY
R. ZARATE

DRAWN BY
J. HUFNAGEL

CHECKED BY
R. ALDREDGE

IN CHARGE
R. ZARATE

DATE
OCT. 2017

DALLAS TO HOUSTON
HIGH-SPEED RAIL
APPLICANT: TCRR
SWF-2011-00483



Drawing Title
NAVARRO WEST SEGMENT

PLAN VIEW (FRA SEG. 3A)
STA NW 190+00 TO 280+00

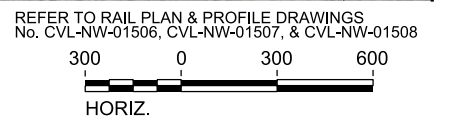
Scale AS SHOWN		
Drawing Status NOT FOR CONSTRUCTION		
Job No 234180	Drawing No 404-NW-02003	Rev 03



RAIL CONSTRUCTION TYPE	PERMANENT IMPACTS	TEMPORARY IMPACTS	OTHER
CUT	EMERGENT WETLAND	EMERGENT WETLAND	LIMITS OF DISTURBANCE (CONSTRUCTION FOOTPRINT)
EMBANKMENT	FORESTED WETLAND	POND	PERMANENT UTILITIES IMPACTS
RETAIN FILL	POND	STREAMS	TEMPORARY UTILITIES IMPACTS
RETAIN CUT	SCRUB/SHRUB WETLAND	OTHER IMPACTS	ROADWAY IMPACTS
VIADUCT	STREAMS	CONVERSION WETLAND	CULVERT FLOW
			PIER LOCATIONS

- NOTES:
- POTENTIALLY NON-JURISDICTIONAL WATERBODIES DO NOT INCLUDE IMPACT QUANTITIES.
 - P = PERMANENT IMPACT
 - T = TEMPORARY IMPACT
 - ES = EPHEMERAL STREAM
 - IS = INTERMITTENT STREAM
 - PS = PERENNIAL STREAM
 - C = CONVERSION
 - TEMPORARY, PERMANENT AND CONVERSION IMPACTS ARE SUMMED UP IN ONE CALLOUT BOX FOR EACH FEATURE.
 - UTILITY AND TEMPORARY CONSTRUCTION IMPACTS DO NOT REFERENCE A DETAIL.
 - DRAWINGS ARE PRINTED AT HALF-SIZE (11X17).

PLAN



REV	DATE	BY	CHK	APP	DESCRIPTION

DESIGNED BY
R. ZARATE

DRAWN BY
J. HUFNAGEL

CHECKED BY
R. ALDREDGE

IN CHARGE
R. ZARATE

DATE
OCT. 2017

DALLAS TO HOUSTON
HIGH-SPEED RAIL
APPLICANT: TCRR
SWF-2011-00483



Arup Texas, Inc.
10370 Richmond Ave., Suite 475
Houston, Texas 77042 USA
Tel (713) 783 2787 Fax (713) 343 1467
www.arup.com
Texas Registered Engineering Firm: F-1990



2711 North Haskell Ave., Suite 3300
Dallas, Texas 75204
Tel (214) 217 2200 Fax (214) 217 2201
www.freese.com
Texas Registered Engineering Firm: F-2144

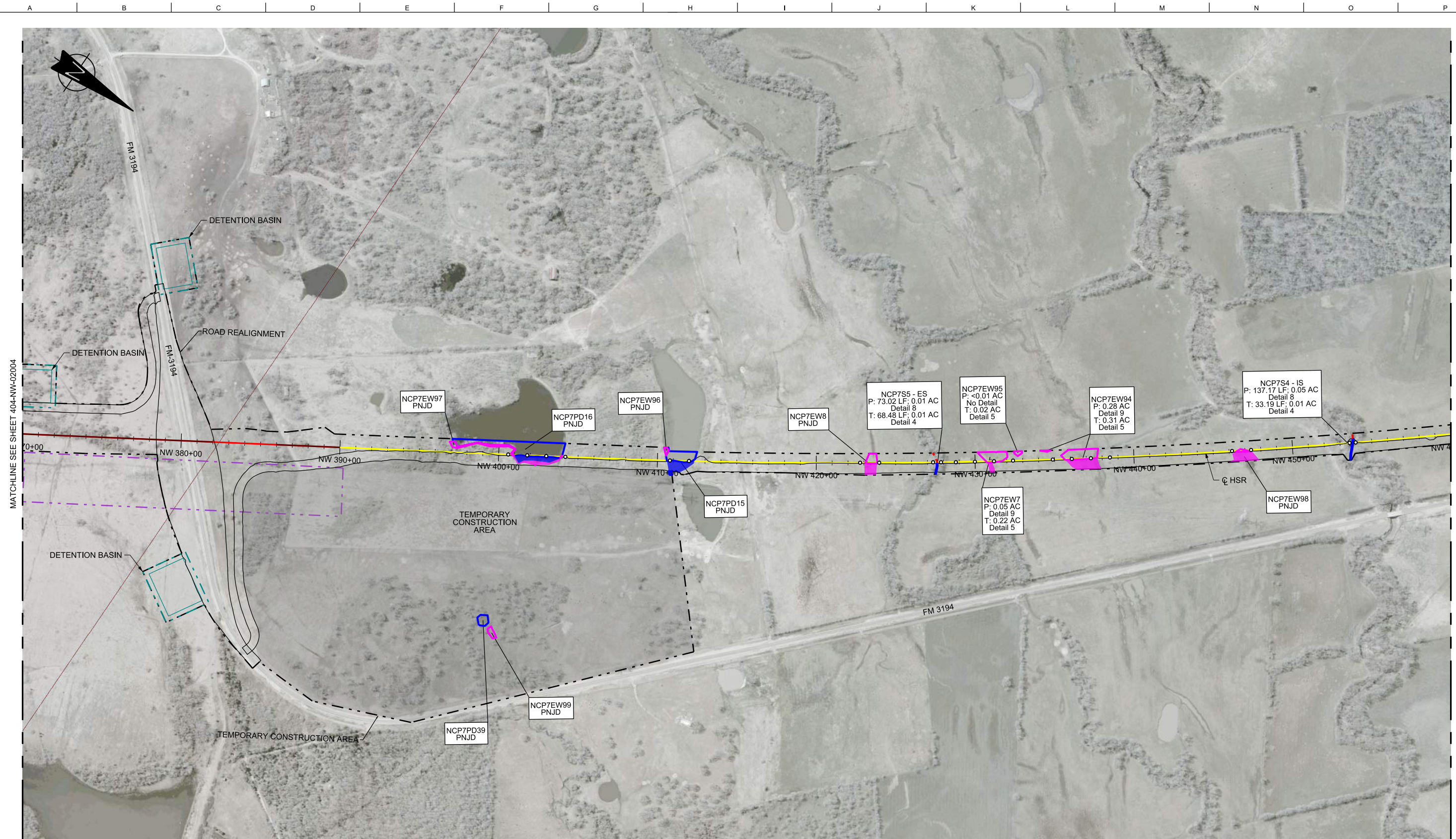


Client
1409 South Lamar Street, Suite 1022, Dallas, Texas 75215

Drawing Title
NAVARRO WEST SEGMENT

**PLAN VIEW (FRA SEG. 3A)
STA NW 280+00 TO 370+00**

Scale AS SHOWN		
Drawing Status NOT FOR CONSTRUCTION		
Job No 234180	Drawing No 404-NW-02004	Rev 03



RAIL CONSTRUCTION TYPE	PERMANENT IMPACTS	TEMPORARY IMPACTS	OTHER
CUT	EMERGENT WETLAND	EMERGENT WETLAND	LIMITS OF DISTURBANCE (CONSTRUCTION FOOTPRINT)
EMBANKMENT	FORESTED WETLAND	POND	PERMANENT UTILITIES IMPACTS
RETAIN FILL	POND	STREAMS	TEMPORARY UTILITIES IMPACTS
RETAIN CUT	SCRUB/SHRUB WETLAND	OTHER IMPACTS	ROADWAY IMPACTS
VIADUCT	STREAMS	CONVERSION WETLAND	CULVERT FLOW
			PIER LOCATIONS

- NOTES:
- POTENTIALLY NON-JURISDICTIONAL WATERBODIES DO NOT INCLUDE IMPACT QUANTITIES.
 - P = PERMANENT IMPACT
 - T = TEMPORARY IMPACT
 - ES = EPHEMERAL STREAM
 - IS = INTERMITTENT STREAM
 - PS = PERENNIAL STREAM
 - C = CONVERSION
 - TEMPORARY, PERMANENT AND CONVERSION IMPACTS ARE SUMMED UP IN ONE CALLOUT BOX FOR EACH FEATURE.
 - UTILITY AND TEMPORARY CONSTRUCTION IMPACTS DO NOT REFERENCE A DETAIL.
 - DRAWINGS ARE PRINTED AT HALF-SIZE (11X17).

REFER TO RAIL PLAN & PROFILE DRAWING No. CVL-NW-01508 & CVL-NW-01509

300 0 300 600
HORIZ.

PLAN

REV	DATE	BY	CHK	APP	DESCRIPTION

DESIGNED BY
R. ZARATE

DRAWN BY
J. HUFNAGEL

CHECKED BY
R. ALDREDGE

IN CHARGE
R. ZARATE

DATE
OCT. 2017

DALLAS TO HOUSTON
HIGH-SPEED RAIL
APPLICANT: TCRR
SWF-2011-00483



Arup Texas, Inc.
10370 Richmond Ave., Suite 475
Houston, Texas 77042 USA
Tel (713) 783 2787 Fax (713) 343 1467
www.arup.com
Texas Registered Engineering Firm: F-1990



2711 North Haskell Ave., Suite 3300
Dallas, Texas 75204
Tel (214) 217 2200 Fax (214) 217 2201
www.freese.com
Texas Registered Engineering Firm: F-2144

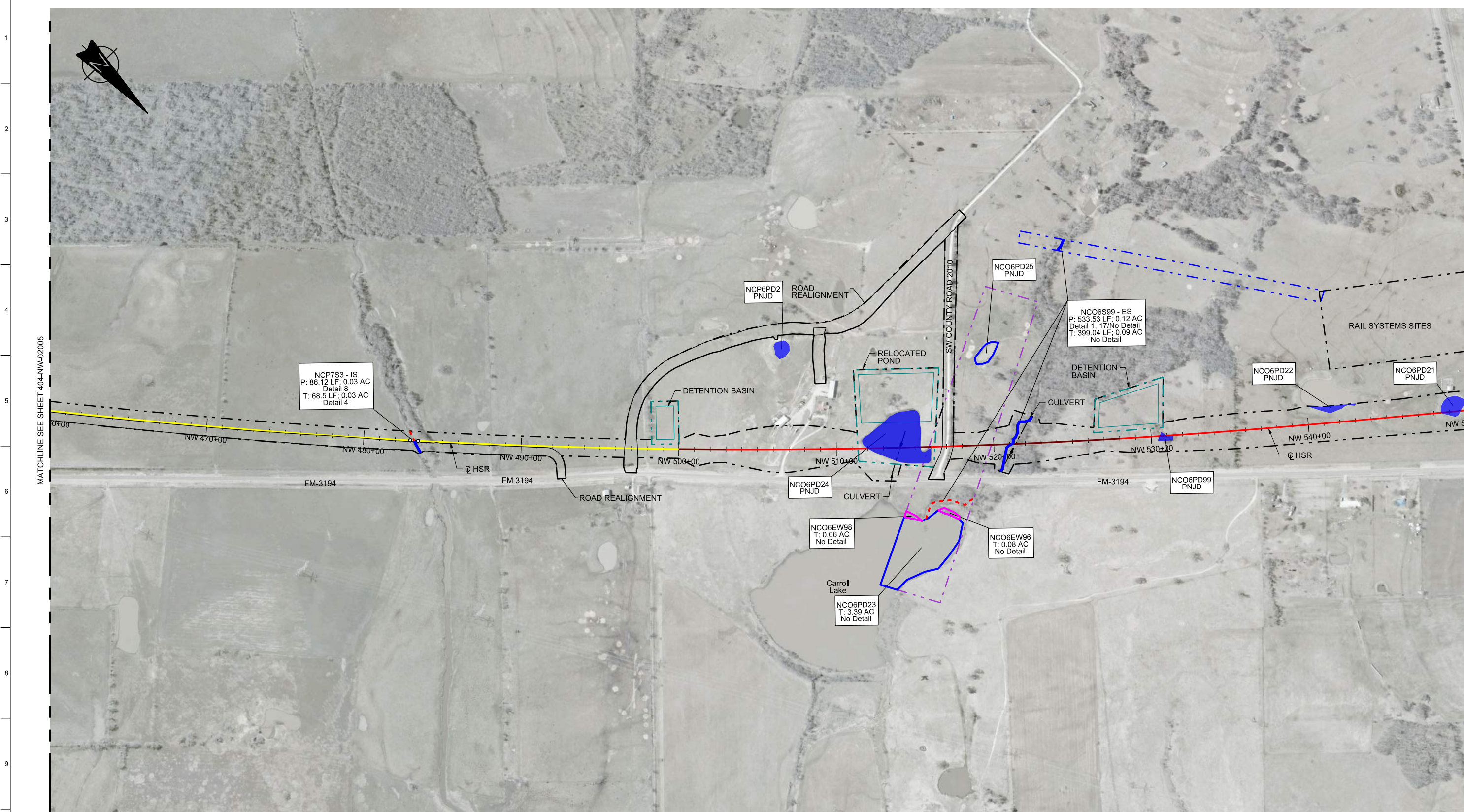


Client
1409 South Lamar Street, Suite 1022, Dallas, Texas 75215

Drawing Title
NAVARRO WEST SEGMENT

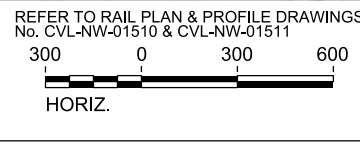
PLAN VIEW (FRA SEG. 3A)
STA NW 370+00 TO 460+00

Scale AS SHOWN	Drawing Status NOT FOR CONSTRUCTION	
Job No 234180	Drawing No 404-NW-02005	Rev 03



RAIL CONSTRUCTION TYPE	PERMANENT IMPACTS	TEMPORARY IMPACTS	OTHER
CUT	EMERGENT WETLAND	EMERGENT WETLAND	LIMITS OF DISTURBANCE (CONSTRUCTION FOOTPRINT)
EMBANKMENT	FORESTED WETLAND	POND	PERMANENT UTILITIES IMPACTS
RETAIN FILL	POND	STREAMS	TEMPORARY UTILITIES IMPACTS
RETAIN CUT	SCRUB/SHRUB WETLAND	OTHER IMPACTS	ROADWAY IMPACTS
VIADUCT	STREAMS	CONVERSION WETLAND	CULVERT FLOW
			PIER LOCATIONS

- NOTES:
- POTENTIALLY NON-JURISDICTIONAL WATERBODIES DO NOT INCLUDE IMPACT QUANTITIES.
 - P = PERMANENT IMPACT
 - T = TEMPORARY IMPACT
 - ES = EPHEMERAL STREAM
 - IS = INTERMITTENT STREAM
 - PS = PERENNIAL STREAM
 - C = CONVERSION
 - TEMPORARY, PERMANENT AND CONVERSION IMPACTS ARE SUMMED UP IN ONE CALLOUT BOX FOR EACH FEATURE.
 - UTILITY AND TEMPORARY CONSTRUCTION IMPACTS DO NOT REFERENCE A DETAIL.
 - DRAWINGS ARE PRINTED AT HALF-SIZE (11X17).



REV	DATE	BY	CHK	APP	DESCRIPTION

DESIGNED BY
R. ZARATE
DRAWN BY
J. HUFNAGEL
CHECKED BY
R. ALDREDGE
IN CHARGE
R. ZARATE
DATE
OCT. 2017

DALLAS TO HOUSTON
HIGH-SPEED RAIL
APPLICANT: TCRR
SWF-2011-00483

ARUP
Arup Texas, Inc.
10370 Richmond Ave., Suite 475
Houston, Texas 77042 USA
Tel (713) 783 2787 Fax (713) 343 1467
www.arup.com
Texas Registered Engineering Firm: F-1990

FREESSE & NICHOLS
2711 North Haskell Ave., Suite 3300
Dallas, Texas 75204
Tel (214) 217 2200 Fax (214) 217 2201
www.freesse.com
Texas Registered Engineering Firm: F-2144

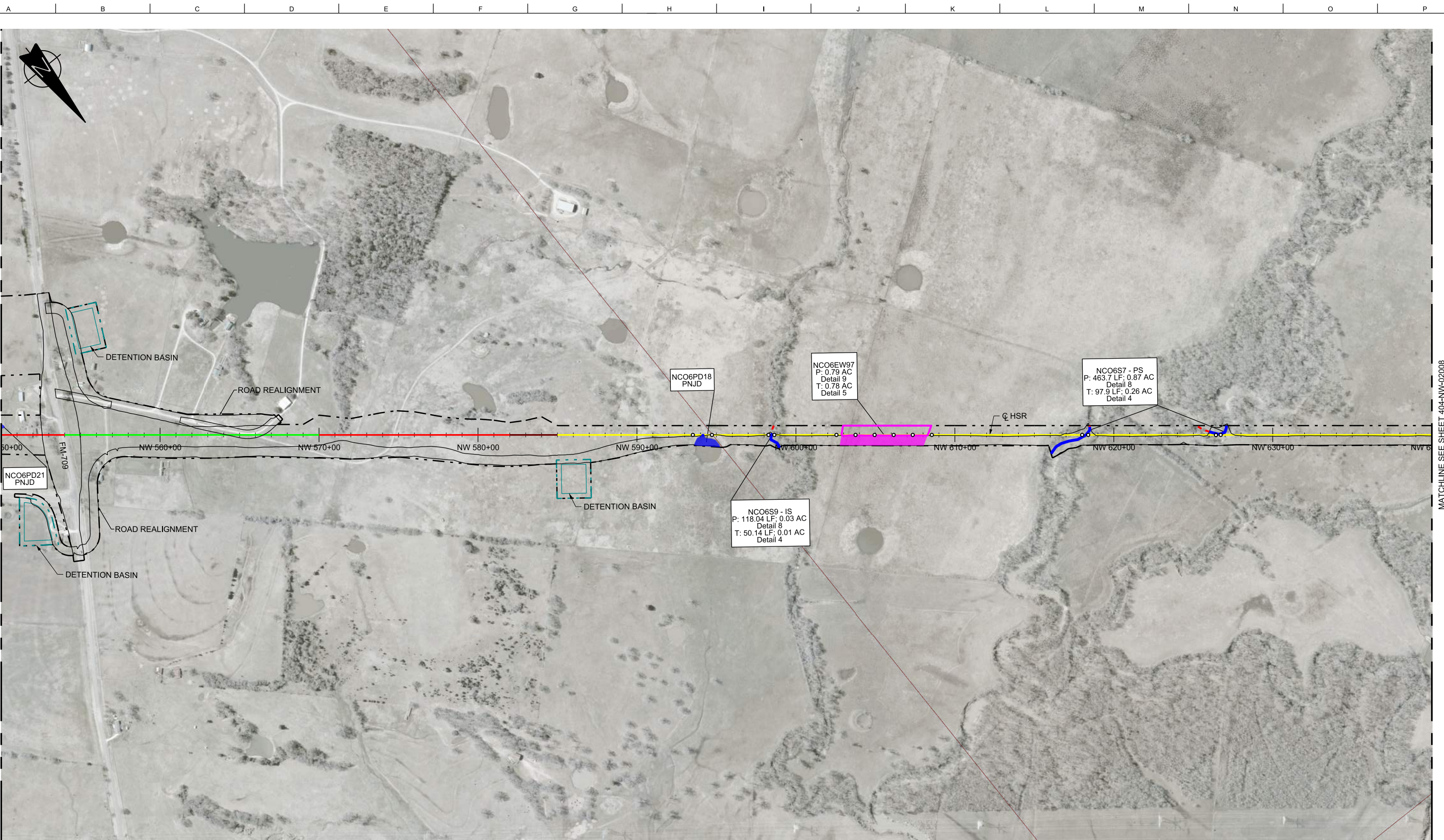
Client
TEXAS CENTRAL
1409 South Lamar Street, Suite 1022, Dallas, Texas 75215

Drawing Title
NAVARRO WEST SEGMENT
PLAN VIEW (FRA SEG. 3A)
STA NW 460+00 TO 550+00

Scale
AS SHOWN

Drawing Status
NOT FOR CONSTRUCTION

Job No	Drawing No	Rev
234180	404-NW-02006	03



MATCHLINE SEE SHEET 404-NW-02006

MATCHLINE SEE SHEET 404-NW-02008

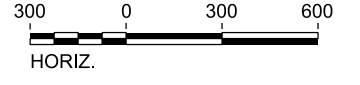
RAIL CONSTRUCTION TYPE	PERMANENT IMPACTS	TEMPORARY IMPACTS	OTHER
CUT	EMERGENT WETLAND	EMERGENT WETLAND	LIMITS OF DISTURBANCE (CONSTRUCTION FOOTPRINT)
EMBANKMENT	FORESTED WETLAND	POND	PERMANENT UTILITIES IMPACTS
RETAIN FILL	POND	STREAMS	TEMPORARY UTILITIES IMPACTS
RETAIN CUT	SCRUB/SHRUB WETLAND	OTHER IMPACTS	ROADWAY IMPACTS
VIADUCT	STREAMS	CONVERSION WETLAND	CULVERT FLOW
			PIER LOCATIONS

NOTES:

- POTENTIALLY NON-JURISDICTIONAL WATERBODIES DO NOT INCLUDE IMPACT QUANTITIES.
- P = PERMANENT IMPACT
- T = TEMPORARY IMPACT
- ES = EPHEMERAL STREAM
- IS = INTERMITTENT STREAM
- PS = PERENNIAL STREAM
- C = CONVERSION
- TEMPORARY, PERMANENT AND CONVERSION IMPACTS ARE SUMMED UP IN ONE CALLOUT BOX FOR EACH FEATURE.
- UTILITY AND TEMPORARY CONSTRUCTION IMPACTS DO NOT REFERENCE A DETAIL.
- DRAWINGS ARE PRINTED AT HALF-SIZE (11X17).

PLAN

REFER TO RAIL PLAN & PROFILE DRAWINGS No. CVL-NW-01511, CVL-NW-01512, & CVL-NW-01513



REV	DATE	BY	CHK	APP	DESCRIPTION

DESIGNED BY
R. ZARATE

DRAWN BY
J. HUFNAGEL

CHECKED BY
R. ALDREDGE

IN CHARGE
R. ZARATE

DATE

DALLAS TO HOUSTON
HIGH-SPEED RAIL
APPLICANT: TCRR
SWF-2011-00483



Arup Texas, Inc.
10370 Richmond Ave., Suite 475
Houston, Texas 77042 USA
Tel (713) 783 2787 Fax (713) 343 1467
www.arup.com
Texas Registered Engineering Firm: F-1990



2711 North Haskell Ave., Suite 3300
Dallas, Texas 75204
Tel (214) 217 2200 Fax (214) 217 2201
www.freese.com
Texas Registered Engineering Firm: F-2144

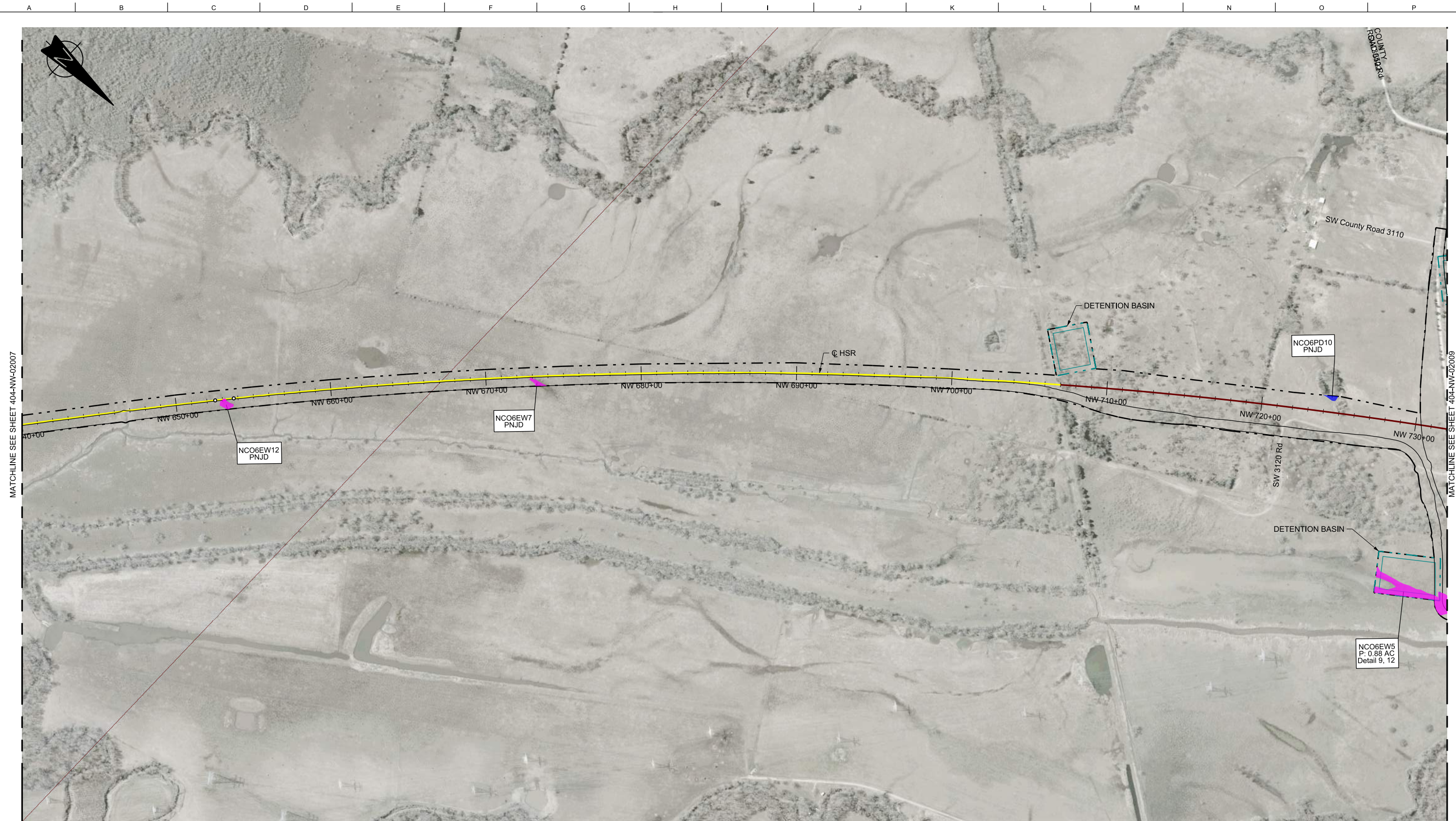


Client
1409 South Lamar Street, Suite 1022, Dallas, Texas 75215

Drawing Title
NAVARRO WEST SEGMENT

**PLAN VIEW (FRA SEG. 3A)
STA NW 550+00 TO 640+00**

Scale AS SHOWN		
Drawing Status NOT FOR CONSTRUCTION		
Job No 234180	Drawing No 404-NW-02007	Rev 03



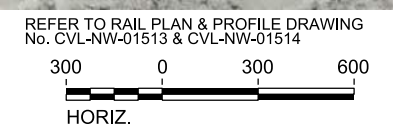
MATCHLINE SEE SHEET 404-NW-02007

MATCHLINE SEE SHEET 404-NW-02009

RAIL CONSTRUCTION TYPE	PERMANENT IMPACTS	TEMPORARY IMPACTS	OTHER
CUT	EMERGENT WETLAND	EMERGENT WETLAND	LIMITS OF DISTURBANCE (CONSTRUCTION FOOTPRINT)
EMBANKMENT	FORESTED WETLAND	POND	PERMANENT UTILITIES IMPACTS
RETAIN FILL	POND	STREAMS	TEMPORARY UTILITIES IMPACTS
RETAIN CUT	SCRUB/SHRUB WETLAND	OTHER IMPACTS	ROADWAY IMPACTS
VIADUCT	STREAMS	CONVERSION WETLAND	CULVERT FLOW
			PIER LOCATIONS

- NOTES:**
- POTENTIALLY NON-JURISDICTIONAL WATERBODIES DO NOT INCLUDE IMPACT QUANTITIES.
 - P = PERMANENT IMPACT
 - T = TEMPORARY IMPACT
 - ES = EPHEMERAL STREAM
 - IS = INTERMITTENT STREAM
 - PS = PERENNIAL STREAM
 - C = CONVERSION
 - TEMPORARY, PERMANENT AND CONVERSION IMPACTS ARE SUMMED UP IN ONE CALLOUT BOX FOR EACH FEATURE.
 - UTILITY AND TEMPORARY CONSTRUCTION IMPACTS DO NOT REFERENCE A DETAIL.
 - DRAWINGS ARE PRINTED AT HALF-SIZE (11X17).

PLAN



REV	DATE	BY	CHK	APP	DESCRIPTION

DESIGNED BY
R. ZARATE

DRAWN BY
J. HUFNAGEL

CHECKED BY
R. ALDREDGE

IN CHARGE
R. ZARATE

DATE
OCT. 2017

DALLAS TO HOUSTON
HIGH-SPEED RAIL
APPLICANT: TCRR
SWF-2011-00483

ARUP

Arup Texas, Inc.
10370 Richmond Ave., Suite 475
Houston, Texas 77042 USA
Tel (713) 783 2787 Fax (713) 343 1467
www.arup.com
Texas Registered Engineering Firm: F-1990

FREES & NICHOLS

2711 North Haskell Ave., Suite 3300
Dallas, Texas 75204
Tel (214) 217 2200 Fax (214) 217 2201
www.freese.com
Texas Registered Engineering Firm: F-2144

Client

1409 South Lamar Street, Suite 1022, Dallas, Texas 75215

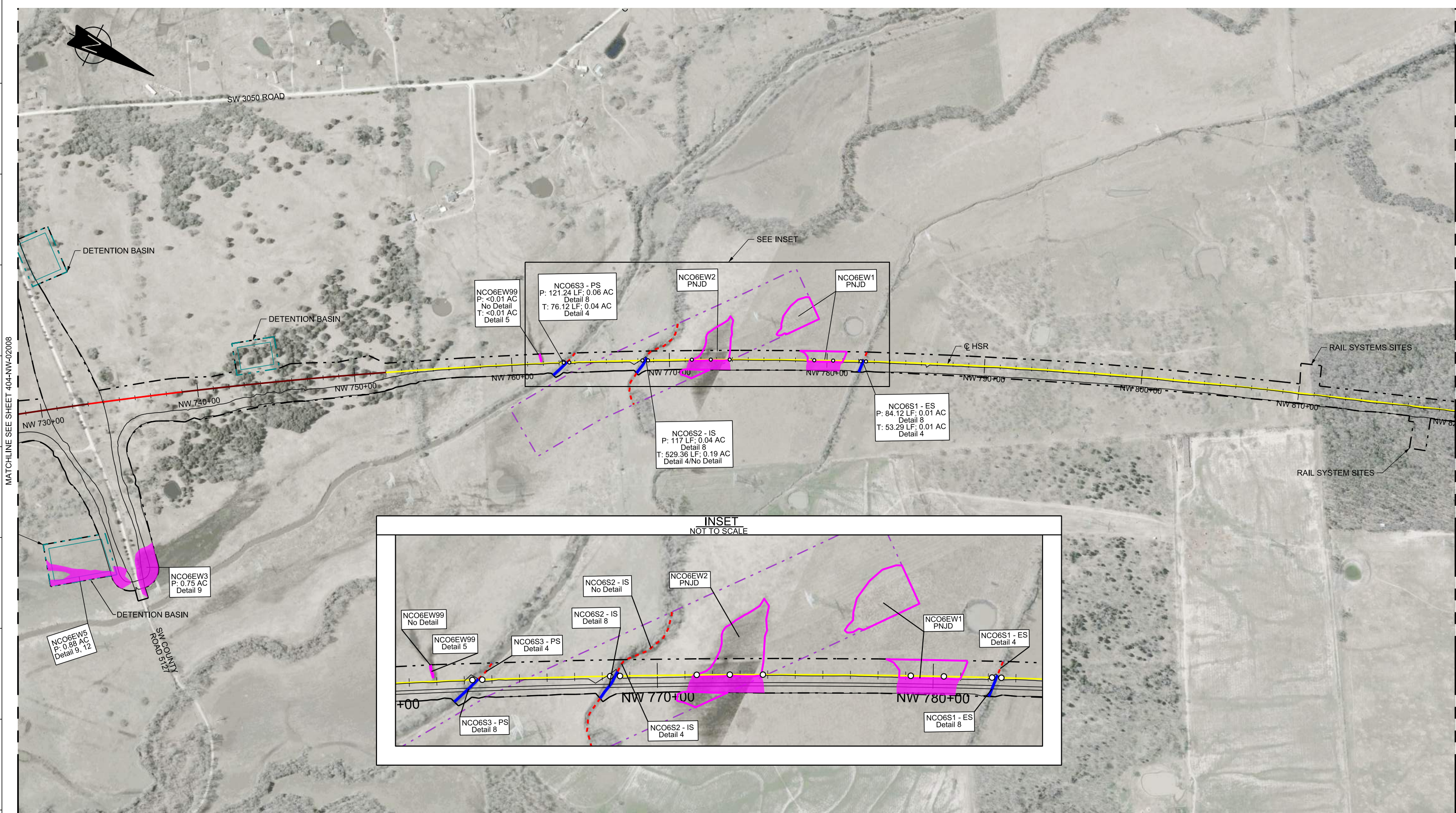
Drawing Title
NAVARRO WEST SEGMENT

PLAN VIEW (FRA SEG. 3A)
STA NW 640+00 TO 730+00

Scale
AS SHOWN

Drawing Status
NOT FOR CONSTRUCTION

Job No 234180	Drawing No 404-NW-02008	Rev 03
------------------	----------------------------	-----------



RAIL CONSTRUCTION TYPE	PERMANENT IMPACTS	TEMPORARY IMPACTS	OTHER
CUT	EMERGENT WETLAND	EMERGENT WETLAND	LIMITS OF DISTURBANCE (CONSTRUCTION FOOTPRINT)
EMBANKMENT	FORESTED WETLAND	POND	PERMANENT UTILITIES IMPACTS
RETAIN FILL	POND	STREAMS	TEMPORARY UTILITIES IMPACTS
RETAIN CUT	SCRUB/SHRUB WETLAND	OTHER IMPACTS	ROADWAY IMPACTS
VIADUCT	STREAMS	CONVERSION WETLAND	CULVERT FLOW
			PIER LOCATIONS

- NOTES:
- POTENTIALLY NON-JURISDICTIONAL WATERBODIES DO NOT INCLUDE IMPACT QUANTITIES.
 - P = PERMANENT IMPACT
 - T = TEMPORARY IMPACT
 - ES = EPHEMERAL STREAM
 - IS = INTERMITTENT STREAM
 - PS = PERENNIAL STREAM
 - C = CONVERSION
 - TEMPORARY, PERMANENT AND CONVERSION IMPACTS ARE SUMMED UP IN ONE CALLOUT BOX FOR EACH FEATURE.
 - UTILITY AND TEMPORARY CONSTRUCTION IMPACTS DO NOT REFERENCE A DETAIL.
 - DRAWINGS ARE PRINTED AT HALF-SIZE (11X17).

REFER TO RAIL PLAN & PROFILE DRAWINGS
No. CVL-NW-01514, CVL-NW-01515, & CVL-NW-01516

300 0 300 600
HORIZ.

REV	DATE	BY	CHK	APP	DESCRIPTION

DESIGNED BY
R. ZARATE
DRAWN BY
J. HUFNAGEL
CHECKED BY
R. ALDREDGE
IN CHARGE
R. ZARATE
DATE

DALLAS TO HOUSTON
HIGH-SPEED RAIL
APPLICANT: TCRR
SWF-2011-00483

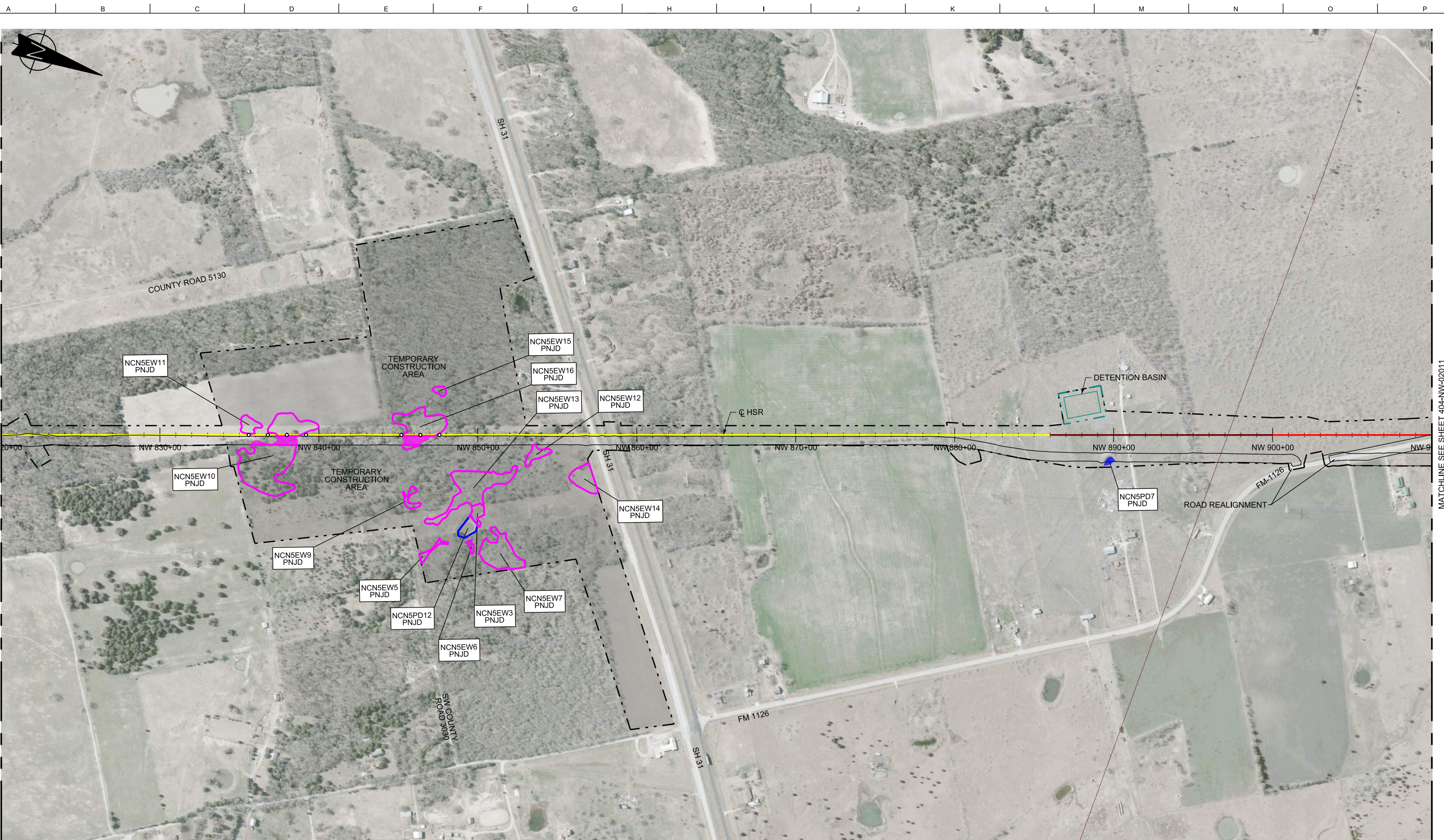
ARUP
Arup Texas, Inc.
10370 Richmond Ave., Suite 475
Houston, Texas 77042 USA
Tel (713) 783 2787 Fax (713) 343 1467
www.arup.com
Texas Registered Engineering Firm: F-1990

FREES & NICHOLS
2711 North Haskell Ave., Suite 3300
Dallas, Texas 75204
Tel (214) 217 2200 Fax (214) 217 2201
www.freese.com
Texas Registered Engineering Firm: F-2144

Client
TEXAS CENTRAL
1409 South Lamar Street, Suite 1022, Dallas, Texas 75215

Drawing Title
NAVARRO WEST SEGMENT
PLAN VIEW (FRA SEG. 3A)
STA NW 730+00 TO 820+00

Scale
AS SHOWN
Drawing Status
NOT FOR CONSTRUCTION
Job No. 234180 Drawing No. 404-NW-02009 Rev 03



MATCHLINE SEE SHEET 404-NW-02009

MATCHLINE SEE SHEET 404-NW-02011

RAIL CONSTRUCTION TYPE
CUT
EMBANKMENT
RETAIN FILL
RETAIN CUT
VIADUCT

PERMANENT IMPACTS
EMERGENT WETLAND
FORESTED WETLAND
POND
SCRUB/SHRUB WETLAND
STREAMS

TEMPORARY IMPACTS
EMERGENT WETLAND
POND
STREAMS
OTHER IMPACTS
CONVERSION WETLAND

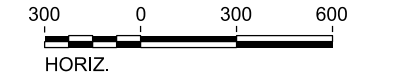
OTHER
LIMITS OF DISTURBANCE (CONSTRUCTION FOOTPRINT)
PERMANENT UTILITIES IMPACTS
TEMPORARY UTILITIES IMPACTS
ROADWAY IMPACTS
CULVERT FLOW
PIER LOCATIONS

NOTES:

- POTENTIALLY NON-JURISDICTIONAL WATERBODIES DO NOT INCLUDE IMPACT QUANTITIES.
- P = PERMANENT IMPACT
- T = TEMPORARY IMPACT
- ES = EPHEMERAL STREAM
- IS = INTERMITTENT STREAM
- PS = PERENNIAL STREAM
- C = CONVERSION
- TEMPORARY, PERMANENT AND CONVERSION IMPACTS ARE SUMMED UP IN ONE CALLOUT BOX FOR EACH FEATURE.
- UTILITY AND TEMPORARY CONSTRUCTION IMPACTS DO NOT REFERENCE A DETAIL.
- DRAWINGS ARE PRINTED AT HALF-SIZE (11X17).

PLAN

REFER TO RAIL PLAN & PROFILE DRAWINGS No. CVL-NW-01516 & CVL-NW-01517



REV	DATE	BY	CHK	APP	DESCRIPTION

DESIGNED BY
R. ZARATE

DRAWN BY
J. HUFNAGEL

CHECKED BY
R. ALDREDGE

IN CHARGE
R. ZARATE

DATE
OCT. 2017

DALLAS TO HOUSTON
HIGH-SPEED RAIL
APPLICANT: TCRR
SWF-2011-00483



Arup Texas, Inc.
10370 Richmond Ave., Suite 475
Houston, Texas 77042 USA
Tel (713) 783 2787 Fax (713) 343 1467
www.arup.com
Texas Registered Engineering Firm: F-1990



2711 North Haskell Ave., Suite 3300
Dallas, Texas 75204
Tel (214) 217 2200 Fax (214) 217 2201
www.freese.com
Texas Registered Engineering Firm: F-2144

Client



1409 South Lamar Street, Suite 1022, Dallas, Texas 75215

Drawing Title

NAVARRO WEST SEGMENT

PLAN VIEW (FRA SEG. 3A)
STA NW 820+00 TO 910+00

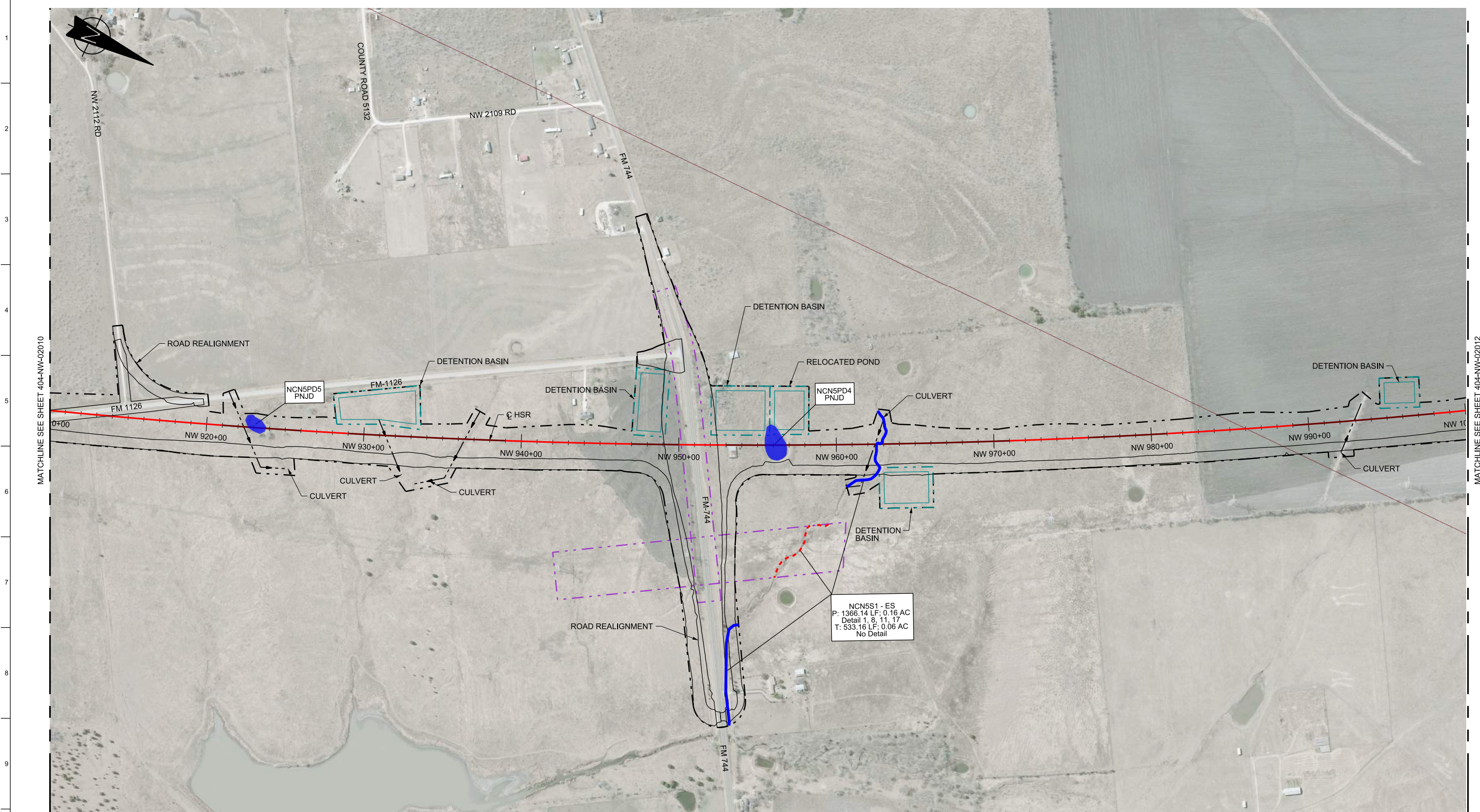
Scale

AS SHOWN

Drawing Status

NOT FOR CONSTRUCTION

Job No	Drawing No	Rev
234180	404-NW-02010	03



MATCHLINE SEE SHEET 404-NW-02010

MATCHLINE SEE SHEET 404-NW-02012

RAIL CONSTRUCTION TYPE
— CUT
— EMBANKMENT
— RETAIN FILL
— RETAIN CUT
— VIADUCT

PERMANENT IMPACTS
— EMERGENT WETLAND
— FORESTED WETLAND
— POND
— SCRUB/SHRUB WETLAND
— STREAMS

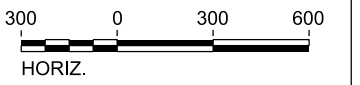
TEMPORARY IMPACTS
— EMERGENT WETLAND
— POND
— STREAMS
— OTHER IMPACTS
— CONVERSION WETLAND

OTHER
- - - LIMITS OF DISTURBANCE (CONSTRUCTION FOOTPRINT)
— PERMANENT UTILITIES IMPACTS
— TEMPORARY UTILITIES IMPACTS
— ROADWAY IMPACTS
— CULVERT FLOW
○ PIER LOCATIONS

NOTES:

- POTENTIALLY NON-JURISDICTIONAL WATERBODIES DO NOT INCLUDE IMPACT QUANTITIES.
- P = PERMANENT IMPACT
- T = TEMPORARY IMPACT
- ES = EPHEMERAL STREAM
- IS = INTERMITTENT STREAM
- PS = PERENNIAL STREAM
- C = CONVERSION
- TEMPORARY, PERMANENT AND CONVERSION IMPACTS ARE SUMMED UP IN ONE CALLOUT BOX FOR EACH FEATURE.
- UTILITY AND TEMPORARY CONSTRUCTION IMPACTS DO NOT REFERENCE A DETAIL.
- DRAWINGS ARE PRINTED AT HALF-SIZE (11X17).

REFER TO RAIL PLAN & PROFILE DRAWINGS No. CVL-NW-01518 & CVL-NW-01519



REV	DATE	BY	CHK	APP	DESCRIPTION

DESIGNED BY
R. ZARATE
DRAWN BY
J. HUFNAGEL
CHECKED BY
R. ALDREDGE
IN CHARGE
R. ZARATE
DATE
OCT. 2017

DALLAS TO HOUSTON
HIGH-SPEED RAIL
APPLICANT: TCRR
SWF-2011-00483



Arup Texas, Inc.
10370 Richmond Ave., Suite 475
Houston, Texas 77042 USA
Tel (713) 783 2787 Fax (713) 343 1467
www.arup.com
Texas Registered Engineering Firm: F-1990

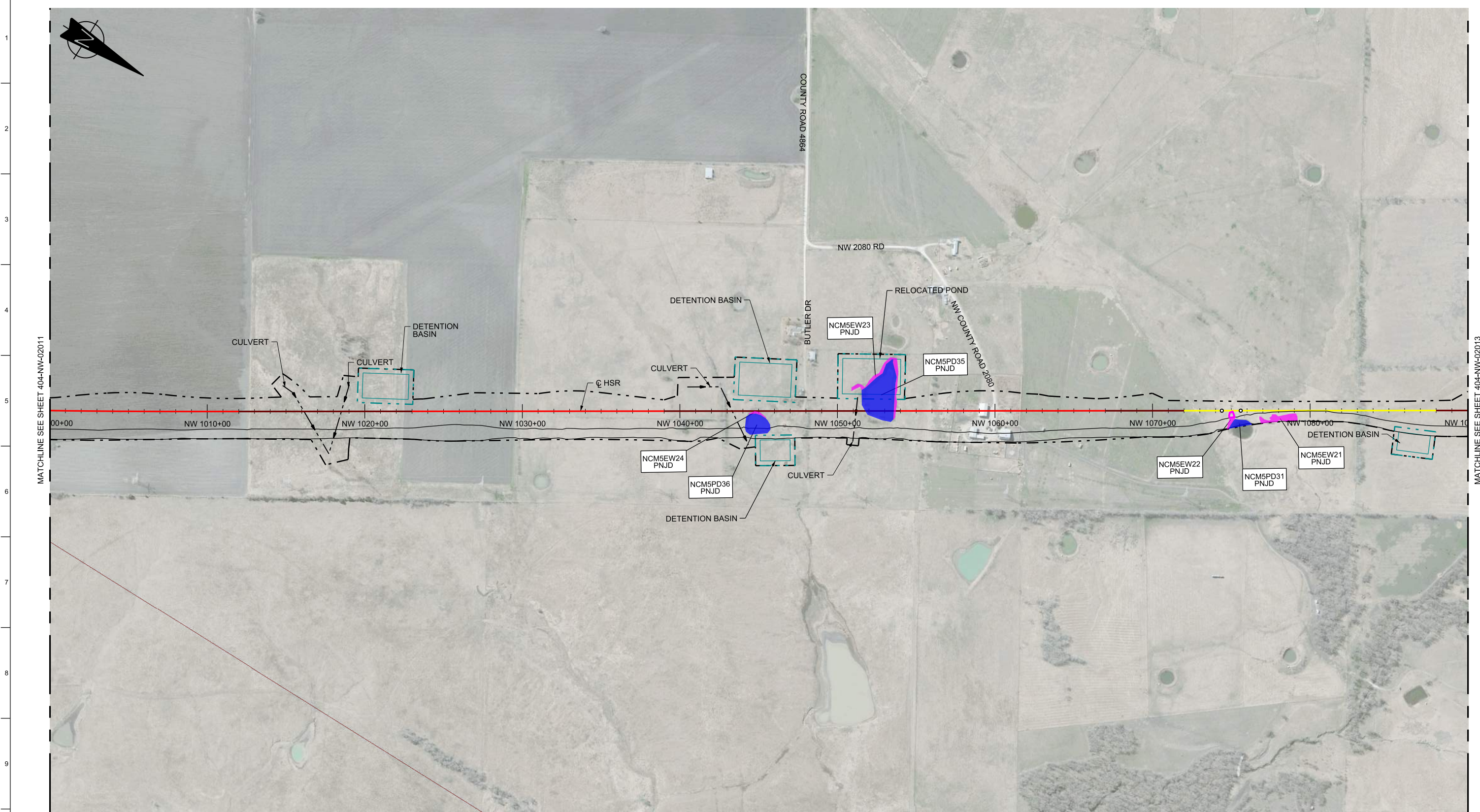


2711 North Haskell Ave., Suite 3300
Dallas, Texas 75204
Tel (214) 217 2200 Fax (214) 217 2201
www.freesse.com
Texas Registered Engineering Firm: F-2144



Drawing Title
NAVARRO WEST SEGMENT
PLAN VIEW (FRA SEG. 3A)
STA NW 910+00 TO 1000+00

Scale AS SHOWN		
Drawing Status NOT FOR CONSTRUCTION		
Job No 234180	Drawing No 404-NW-02011	Rev 03



MATCHLINE SEE SHEET 404-NW-02011

MATCHLINE SEE SHEET 404-NW-02013

RAIL CONSTRUCTION TYPE	PERMANENT IMPACTS	TEMPORARY IMPACTS	OTHER
CUT	EMERGENT WETLAND	EMERGENT WETLAND	LIMITS OF DISTURBANCE (CONSTRUCTION FOOTPRINT)
EMBANKMENT	FORESTED WETLAND	POND	PERMANENT UTILITIES IMPACTS
RETAIN FILL	POND	STREAMS	TEMPORARY UTILITIES IMPACTS
RETAIN CUT	SCRUB/SHRUB WETLAND	OTHER IMPACTS	ROADWAY IMPACTS
VIADUCT	STREAMS	CONVERSION WETLAND	CULVERT FLOW
			PIER LOCATIONS

NOTES:

- POTENTIALLY NON-JURISDICTIONAL WATERBODIES DO NOT INCLUDE IMPACT QUANTITIES.
- P = PERMANENT IMPACT
- T = TEMPORARY IMPACT
- ES = EPHEMERAL STREAM
- IS = INTERMITTENT STREAM
- PS = PERENNIAL STREAM
- C = CONVERSION
- TEMPORARY, PERMANENT AND CONVERSION IMPACTS ARE SUMMED UP IN ONE CALLOUT BOX FOR EACH FEATURE.
- UTILITY AND TEMPORARY CONSTRUCTION IMPACTS DO NOT REFERENCE A DETAIL.
- DRAWINGS ARE PRINTED AT HALF-SIZE (11X17).

PLAN

REFER TO RAIL PLAN & PROFILE DRAWINGS
No. CVL-NW-01519, CVL-NW-01520, & CVL-NW-01521

HORIZ.

REV	DATE	BY	CHK	APP	DESCRIPTION

DESIGNED BY
R. ZARATE

DRAWN BY
J. HUFNAGEL

CHECKED BY
R. ALDREDGE

IN CHARGE
R. ZARATE

DATE
OCT. 2017

DALLAS TO HOUSTON
HIGH-SPEED RAIL
APPLICANT: TCRR
SWF-2011-00483

ARUP
Arup Texas, Inc.
10370 Richmond Ave., Suite 475
Houston, Texas 77042 USA
Tel (713) 783 2787 Fax (713) 343 1467
www.arup.com
Texas Registered Engineering Firm: F-1990

FREESSE & NICHOLS
2711 North Haskell Ave., Suite 3300
Dallas, Texas 75204
Tel (214) 217 2200 Fax (214) 217 2201
www.freesse.com
Texas Registered Engineering Firm: F-2144

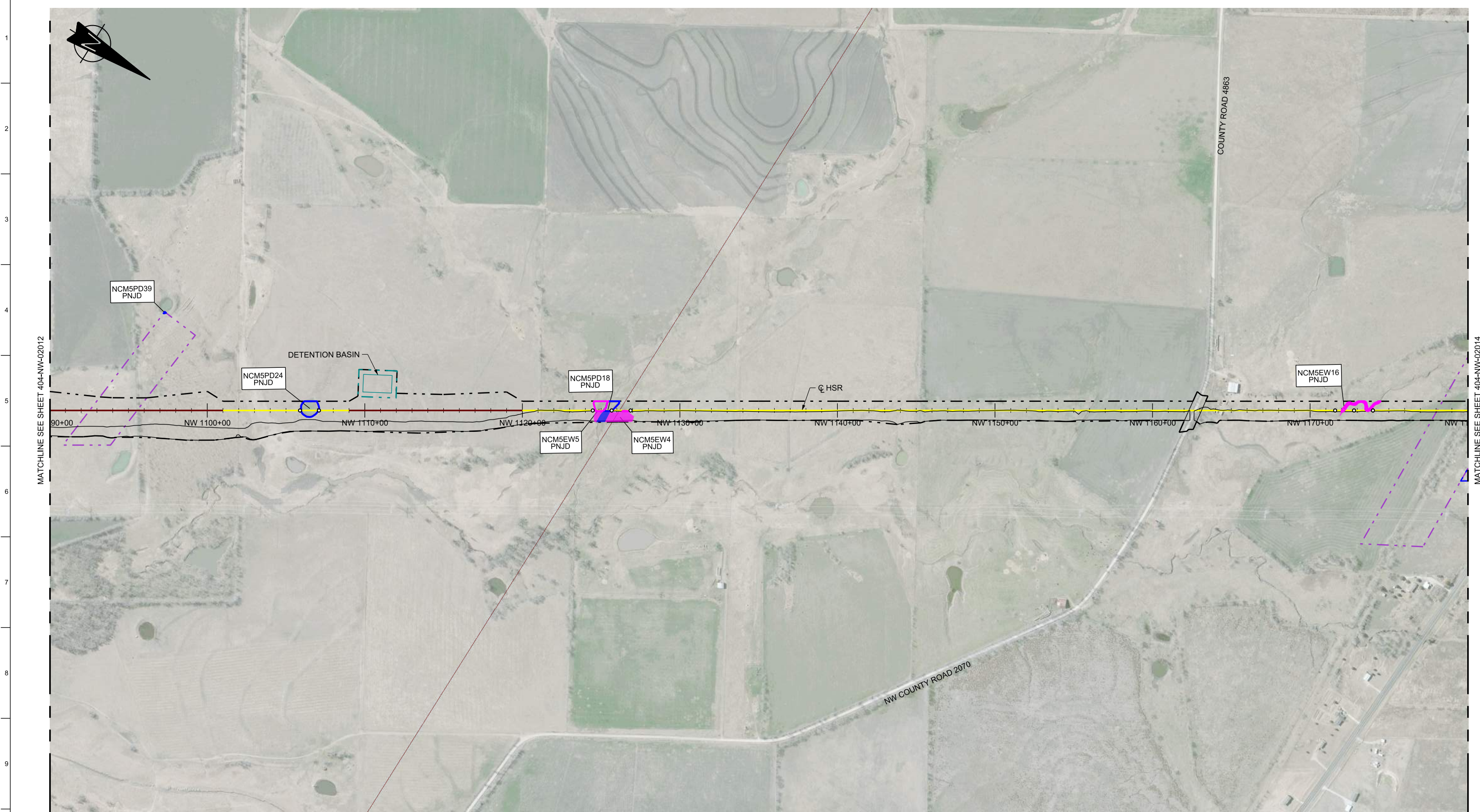
Client
TEXAS CENTRAL
1409 South Lamar Street, Suite 1022, Dallas, Texas 75215

Drawing Title
NAVARRO WEST SEGMENT
PLAN VIEW (FRA SEG. 3A)
STA NW 1000+00 TO 1090+00

Scale
AS SHOWN

Drawing Status
NOT FOR CONSTRUCTION

Job No	Drawing No	Rev
234180	404-NW-02012	03



MATCHLINE SEE SHEET 404-NW-02012

MATCHLINE SEE SHEET 404-NW-02014

RAIL CONSTRUCTION TYPE	PERMANENT IMPACTS	TEMPORARY IMPACTS	OTHER
CUT	EMERGENT WETLAND	EMERGENT WETLAND	LIMITS OF DISTURBANCE (CONSTRUCTION FOOTPRINT)
EMBANKMENT	FORESTED WETLAND	POND	PERMANENT UTILITIES IMPACTS
RETAIN FILL	POND	STREAMS	TEMPORARY UTILITIES IMPACTS
RETAIN CUT	SCRUB/SHRUB WETLAND	OTHER IMPACTS	ROADWAY IMPACTS
VIADUCT	STREAMS	CONVERSION WETLAND	CULVERT FLOW
			PIER LOCATIONS

- NOTES:
- POTENTIALLY NON-JURISDICTIONAL WATERBODIES DO NOT INCLUDE IMPACT QUANTITIES.
 - P = PERMANENT IMPACT
 - T = TEMPORARY IMPACT
 - ES = EPHEMERAL STREAM
 - IS = INTERMITTENT STREAM
 - PS = PERENNIAL STREAM
 - C = CONVERSION
 - TEMPORARY, PERMANENT AND CONVERSION IMPACTS ARE SUMMED UP IN ONE CALLOUT BOX FOR EACH FEATURE.
 - UTILITY AND TEMPORARY CONSTRUCTION IMPACTS DO NOT REFERENCE A DETAIL.
 - DRAWINGS ARE PRINTED AT HALF-SIZE (11X17).

REFER TO RAIL PLAN & PROFILE DRAWINGS No. CVL-NW-01521 & CVL-NW-01522

300 0 300 600
HORIZ.

REV	DATE	BY	CHK	APP	DESCRIPTION

DESIGNED BY
R. ZARATE

DRAWN BY
J. HUFNAGEL

CHECKED BY
R. ALDREDGE

IN CHARGE
R. ZARATE

DATE
OCT. 2017

DALLAS TO HOUSTON
HIGH-SPEED RAIL
APPLICANT: TCRR
SWF-2011-00483

ARUP

Arup Texas, Inc.
10370 Richmond Ave., Suite 475
Houston, Texas 77042 USA
Tel (713) 783 2787 Fax (713) 343 1467
www.arup.com
Texas Registered Engineering Firm: F-1990

FREESSE & NICHOLS

2711 North Haskell Ave., Suite 3300
Dallas, Texas 75204
Tel (214) 217 2200 Fax (214) 217 2201
www.freesse.com
Texas Registered Engineering Firm: F-2144

Client

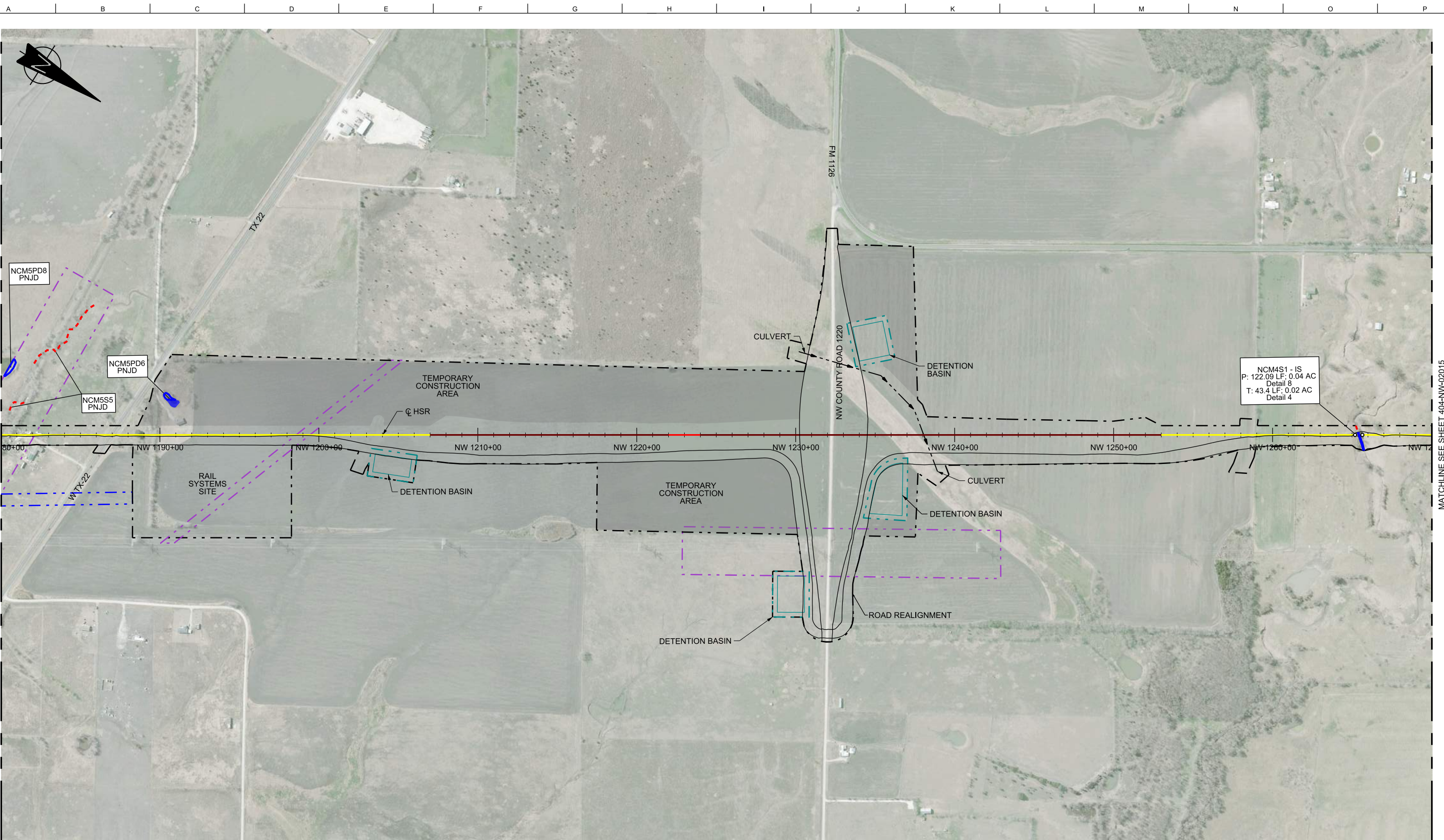
TEXAS CENTRAL

1409 South Lamar Street, Suite 1022, Dallas, Texas 75215

Drawing Title
NAVARRO WEST SEGMENT

PLAN VIEW (FRA SEG. 3A)
STA NW 1090+00 TO 1180+00

Scale AS SHOWN	Drawing Status NOT FOR CONSTRUCTION	
Job No 234180	Drawing No 404-NW-02013	Rev 03



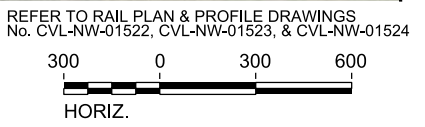
MATCHLINE SEE SHEET 404-NW-02013

MATCHLINE SEE SHEET 404-NW-02015

RAIL CONSTRUCTION TYPE	PERMANENT IMPACTS	TEMPORARY IMPACTS	OTHER
CUT	EMERGENT WETLAND	EMERGENT WETLAND	LIMITS OF DISTURBANCE (CONSTRUCTION FOOTPRINT)
EMBANKMENT	FORESTED WETLAND	POND	PERMANENT UTILITIES IMPACTS
RETAIN FILL	POND	STREAMS	TEMPORARY UTILITIES IMPACTS
RETAIN CUT	SCRUB/SHRUB WETLAND	OTHER IMPACTS	ROADWAY IMPACTS
VIADUCT	STREAMS	CONVERSION WETLAND	CULVERT FLOW
			PIER LOCATIONS

- NOTES:**
- POTENTIALLY NON-JURISDICTIONAL WATERBODIES DO NOT INCLUDE IMPACT QUANTITIES.
 - P = PERMANENT IMPACT
 - T = TEMPORARY IMPACT
 - ES = EPHEMERAL STREAM
 - IS = INTERMITTENT STREAM
 - PS = PERENNIAL STREAM
 - C = CONVERSION
 - TEMPORARY, PERMANENT AND CONVERSION IMPACTS ARE SUMMED UP IN ONE CALLOUT BOX FOR EACH FEATURE.
 - UTILITY AND TEMPORARY CONSTRUCTION IMPACTS DO NOT REFERENCE A DETAIL.
 - DRAWINGS ARE PRINTED AT HALF-SIZE (11X17).

PLAN



REV	DATE	BY	CHK	APP	DESCRIPTION

DESIGNED BY
R. ZARATE

DRAWN BY
J. HUFNAGEL

CHECKED BY
R. ALDREDGE

IN CHARGE
R. ZARATE

DATE
OCT. 2017

DALLAS TO HOUSTON
HIGH-SPEED RAIL
APPLICANT: TCRR
SWF-2011-00483



Arup Texas, Inc.
10370 Richmond Ave., Suite 475
Houston, Texas 77042 USA
Tel (713) 783 2787 Fax (713) 343 1467
www.arup.com
Texas Registered Engineering Firm: F-1990



2711 North Haskell Ave., Suite 3300
Dallas, Texas 75204
Tel (214) 217 2200 Fax (214) 217 2201
www.freese.com
Texas Registered Engineering Firm: F-2144

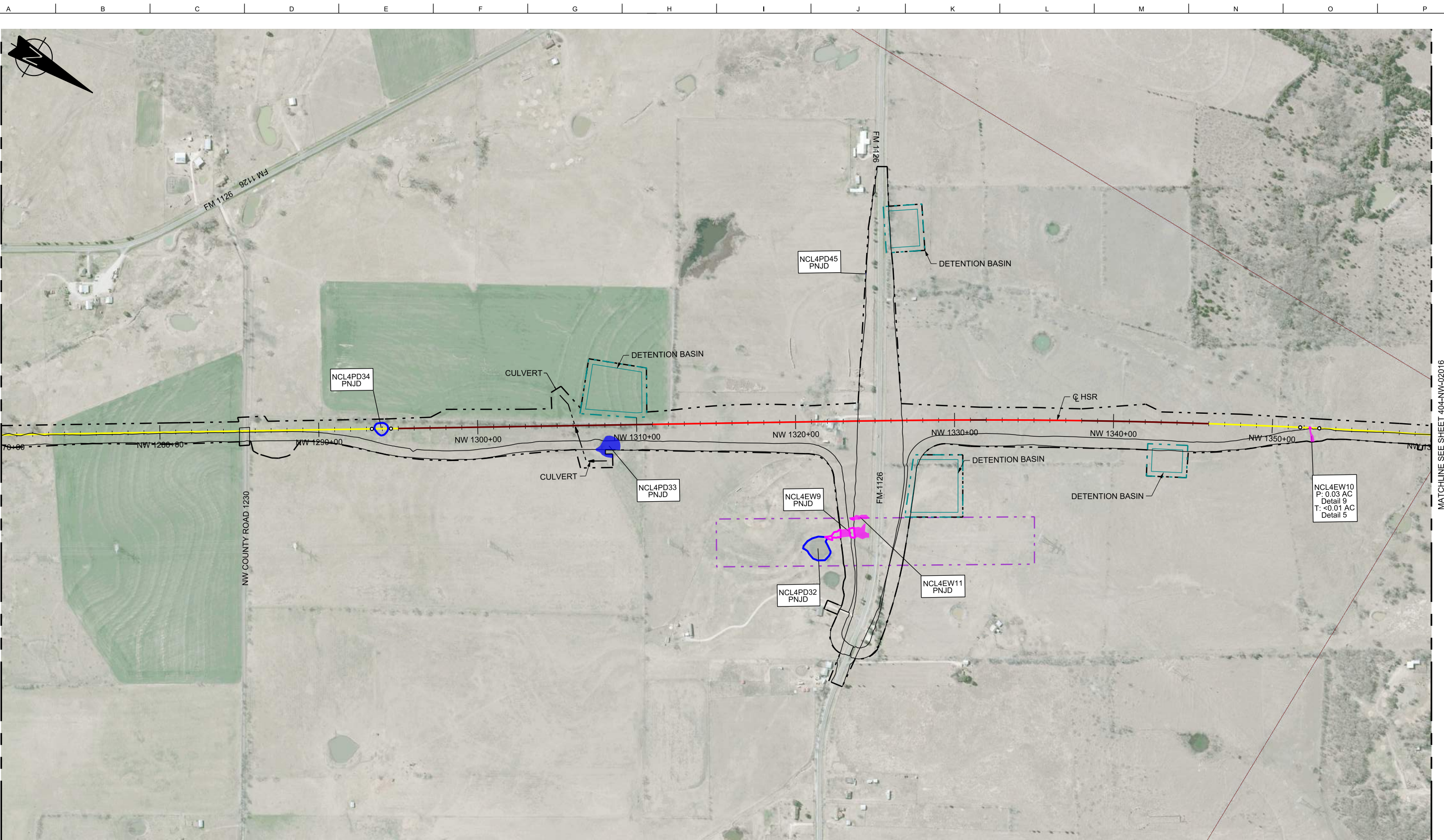


Client
1409 South Lamar Street, Suite 1022, Dallas, Texas 75215

Drawing Title
NAVARRO WEST SEGMENT

**PLAN VIEW (FRA SEG. 3A)
STA NW 1180+00 TO 1270+00**

Scale AS SHOWN		
Drawing Status NOT FOR CONSTRUCTION		
Job No 234180	Drawing No 404-NW-02014	Rev 03



MATCHLINE SEE SHEET 404-NW-02014

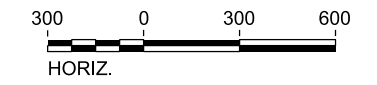
MATCHLINE SEE SHEET 404-NW-02016

RAIL CONSTRUCTION TYPE	PERMANENT IMPACTS	TEMPORARY IMPACTS	OTHER
CUT	EMERGENT WETLAND	EMERGENT WETLAND	LIMITS OF DISTURBANCE (CONSTRUCTION FOOTPRINT)
EMBANKMENT	FORESTED WETLAND	POND	PERMANENT UTILITIES IMPACTS
RETAIN FILL	POND	STREAMS	TEMPORARY UTILITIES IMPACTS
RETAIN CUT	SCRUB/SHRUB WETLAND	OTHER IMPACTS	ROADWAY IMPACTS
VIADUCT	STREAMS	CONVERSION WETLAND	CULVERT FLOW
			PIER LOCATIONS

NOTES:

- POTENTIALLY NON-JURISDICTIONAL WATERBODIES DO NOT INCLUDE IMPACT QUANTITIES.
- P = PERMANENT IMPACT
- T = TEMPORARY IMPACT
- ES = EPHEMERAL STREAM
- IS = INTERMITTENT STREAM
- PS = PERENNIAL STREAM
- C = CONVERSION
- TEMPORARY, PERMANENT AND CONVERSION IMPACTS ARE SUMMED UP IN ONE CALLOUT BOX FOR EACH FEATURE.
- UTILITY AND TEMPORARY CONSTRUCTION IMPACTS DO NOT REFERENCE A DETAIL.
- DRAWINGS ARE PRINTED AT HALF-SIZE (11X17).

REFER TO RAIL PLAN & PROFILE DRAWINGS No. CVL-NW-01524 & CVL-NW-01525



PLAN

REV	DATE	BY	CHK	APP	DESCRIPTION

DESIGNED BY
R. ZARATE
DRAWN BY
J. HUFNAGEL
CHECKED BY
R. ALDREDGE
IN CHARGE
R. ZARATE
DATE
OCT. 2017

DALLAS TO HOUSTON
HIGH-SPEED RAIL
APPLICANT: TCRR
SWF-2011-00483



Arup Texas, Inc.
10370 Richmond Ave., Suite 475
Houston, Texas 77042 USA
Tel (713) 783 2787 Fax (713) 343 1467
www.arup.com
Texas Registered Engineering Firm: F-1990



2711 North Haskell Ave., Suite 3300
Dallas, Texas 75204
Tel (214) 217 2200 Fax (214) 217 2201
www.freese.com
Texas Registered Engineering Firm: F-2144

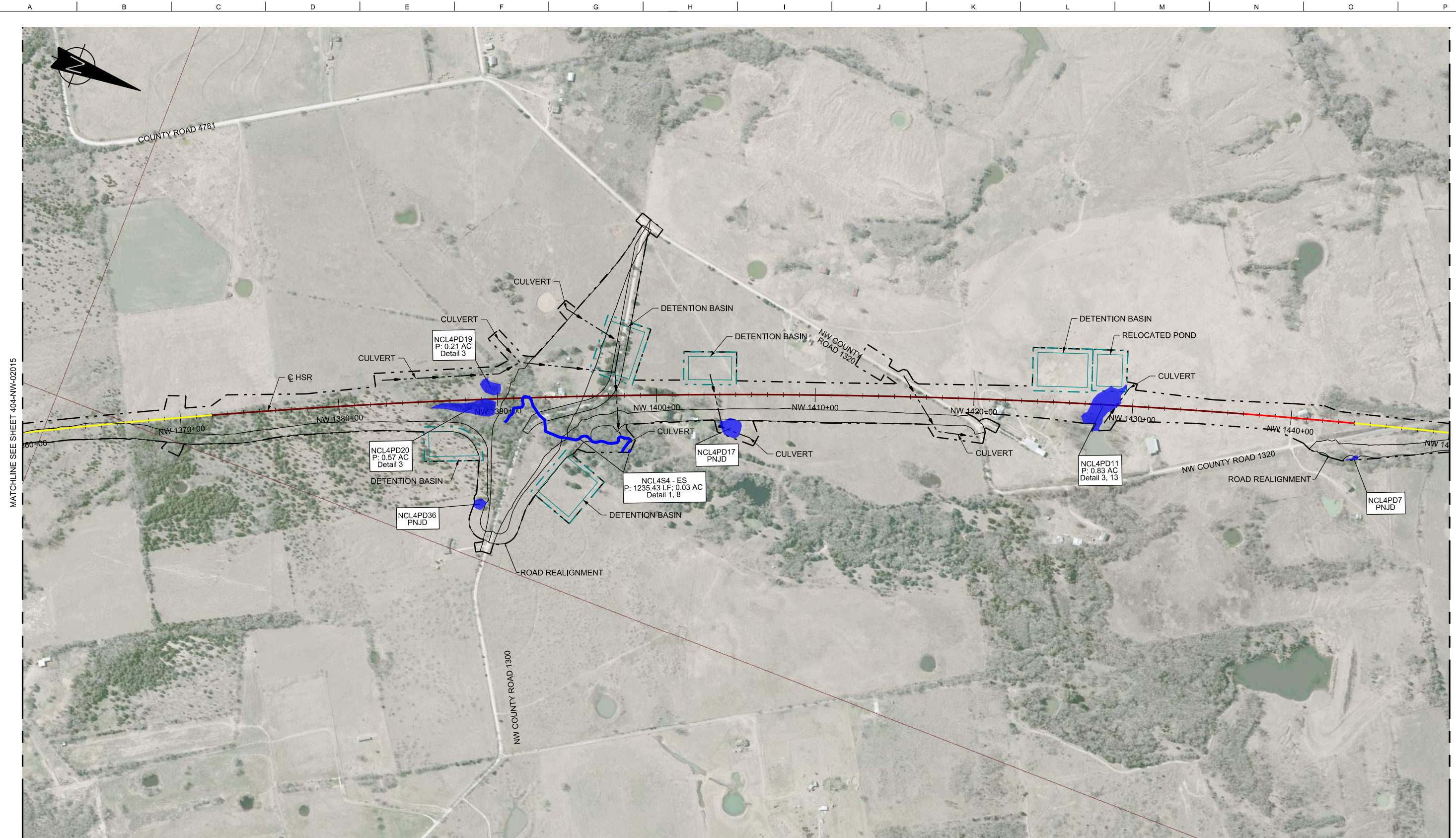


Client
1409 South Lamar Street, Suite 1022, Dallas, Texas 75215

Drawing Title
NAVARRO WEST SEGMENT

**PLAN VIEW (FRA SEG. 3A)
STA NW 1270+00 TO 1360+00**

Scale AS SHOWN		
Drawing Status NOT FOR CONSTRUCTION		
Job No 234180	Drawing No 404-NW-02015	Rev 03



MATCHLINE SEE SHEET 404-NW-02015

MATCHLINE SEE SHEET 404-NW-02017

RAIL CONSTRUCTION TYPE	PERMANENT IMPACTS	TEMPORARY IMPACTS	OTHER
CUT	EMERGENT WETLAND	EMERGENT WETLAND	LIMITS OF DISTURBANCE (CONSTRUCTION FOOTPRINT)
EMBANKMENT	FORESTED WETLAND	POND	PERMANENT UTILITIES IMPACTS
RETAIN FILL	POND	STREAMS	TEMPORARY UTILITIES IMPACTS
RETAIN CUT	SCRUB/SHRUB WETLAND	OTHER IMPACTS	ROADWAY IMPACTS
VIADUCT	STREAMS	CONVERSION WETLAND	CULVERT FLOW
			PIER LOCATIONS

- NOTES:**
- POTENTIALLY NON-JURISDICTIONAL WATERBODIES DO NOT INCLUDE IMPACT QUANTITIES.
 - P = PERMANENT IMPACT
 - T = TEMPORARY IMPACT
 - ES = EPHEMERAL STREAM
 - IS = INTERMITTENT STREAM
 - PS = PERENNIAL STREAM
 - C = CONVERSION
 - TEMPORARY, PERMANENT AND CONVERSION IMPACTS ARE SUMMED UP IN ONE CALLOUT BOX FOR EACH FEATURE.
 - UTILITY AND TEMPORARY CONSTRUCTION IMPACTS DO NOT REFERENCE A DETAIL.
 - DRAWINGS ARE PRINTED AT HALF-SIZE (11X17).

REFER TO RAIL PLAN & PROFILE DRAWINGS
No. CVL-NW-01526 & CVL-NW-01527

300 0 300 600
HORIZ.

PLAN

REV	DATE	BY	CHK	APP	DESCRIPTION

DESIGNED BY
R. ZARATE

DRAWN BY
J. HUFNAGEL

CHECKED BY
R. ALDREDGE

IN CHARGE
R. ZARATE

DATE
OCT. 2017

DALLAS TO HOUSTON
HIGH-SPEED RAIL
APPLICANT: TCRR
SWF-2011-00483

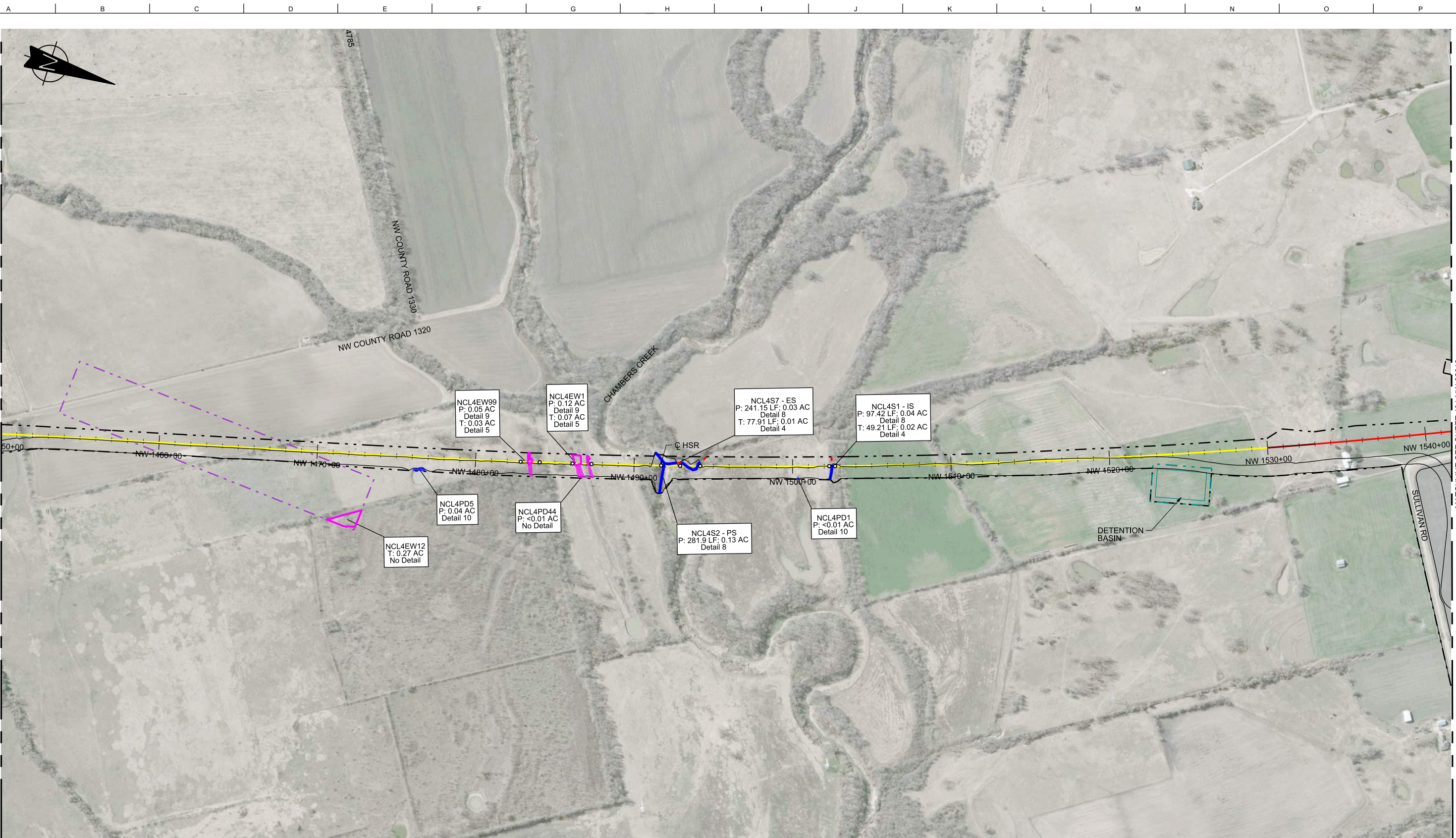
ARUP
Arup Texas, Inc.
10370 Richmond Ave., Suite 475
Houston, Texas 77042 USA
Tel (713) 783 2787 Fax (713) 343 1467
www.arup.com
Texas Registered Engineering Firm: F-1990

FRESE & NICHOLS
2711 North Haskell Ave., Suite 3300
Dallas, Texas 75204
Tel (214) 217 2200 Fax (214) 217 2201
www.freese.com
Texas Registered Engineering Firm: F-2144

Client
TEXAS CENTRAL
1409 South Lamar Street, Suite 1022, Dallas, Texas 75215

Drawing Title
NAVARRO WEST SEGMENT
PLAN VIEW (FRA SEG. 3A)
STA NW 1360+00 TO 1450+00

Scale AS SHOWN		
Drawing Status NOT FOR CONSTRUCTION		
Job No 234180	Drawing No 404-NW-02016	Rev 03



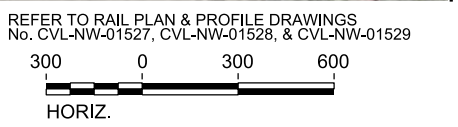
MATCHLINE SEE SHEET 404-NW-02016

MATCHLINE SEE SHEET 404-NW-02018

RAIL CONSTRUCTION TYPE	PERMANENT IMPACTS	TEMPORARY IMPACTS	OTHER
CUT	EMERGENT WETLAND	EMERGENT WETLAND	LIMITS OF DISTURBANCE (CONSTRUCTION FOOTPRINT)
EMBANKMENT	FORESTED WETLAND	POND	PERMANENT UTILITIES IMPACTS
RETAIN FILL	POND	STREAMS	TEMPORARY UTILITIES IMPACTS
RETAIN CUT	SCRUB/SHRUB WETLAND	OTHER IMPACTS	ROADWAY IMPACTS
VIADUCT	STREAMS	CULVERT FLOW	PIER LOCATIONS
		CONVERSION WETLAND	

- NOTES:**
- POTENTIALLY NON-JURISDICTIONAL WATERBODIES DO NOT INCLUDE IMPACT QUANTITIES.
 - P = PERMANENT IMPACT
 - T = TEMPORARY IMPACT
 - ES = EPHEMERAL STREAM
 - IS = INTERMITTENT STREAM
 - PS = PERENNIAL STREAM
 - C = CONVERSION
 - TEMPORARY, PERMANENT AND CONVERSION IMPACTS ARE SUMMED UP IN ONE CALLOUT BOX FOR EACH FEATURE.
 - UTILITY AND TEMPORARY CONSTRUCTION IMPACTS DO NOT REFERENCE A DETAIL.
 - DRAWINGS ARE PRINTED AT HALF-SIZE (11X17).

PLAN



REV	DATE	BY	CHK	APP	DESCRIPTION

DESIGNED BY
R. ZARATE

DRAWN BY
J. HUFNAGEL

CHECKED BY
R. ALDREDGE

IN CHARGE
R. ZARATE

DATE
OCT. 2017

DALLAS TO HOUSTON
HIGH-SPEED RAIL
APPLICANT: TCRR
SWF-2011-00483



Arup Texas, Inc.
10370 Richmond Ave., Suite 475
Houston, Texas 77042 USA
Tel (713) 783 2787 Fax (713) 343 1467
www.arup.com
Texas Registered Engineering Firm: F-1990



2711 North Haskell Ave., Suite 3300
Dallas, Texas 75204
Tel (214) 217 2200 Fax (214) 217 2201
www.freese.com
Texas Registered Engineering Firm: F-2144

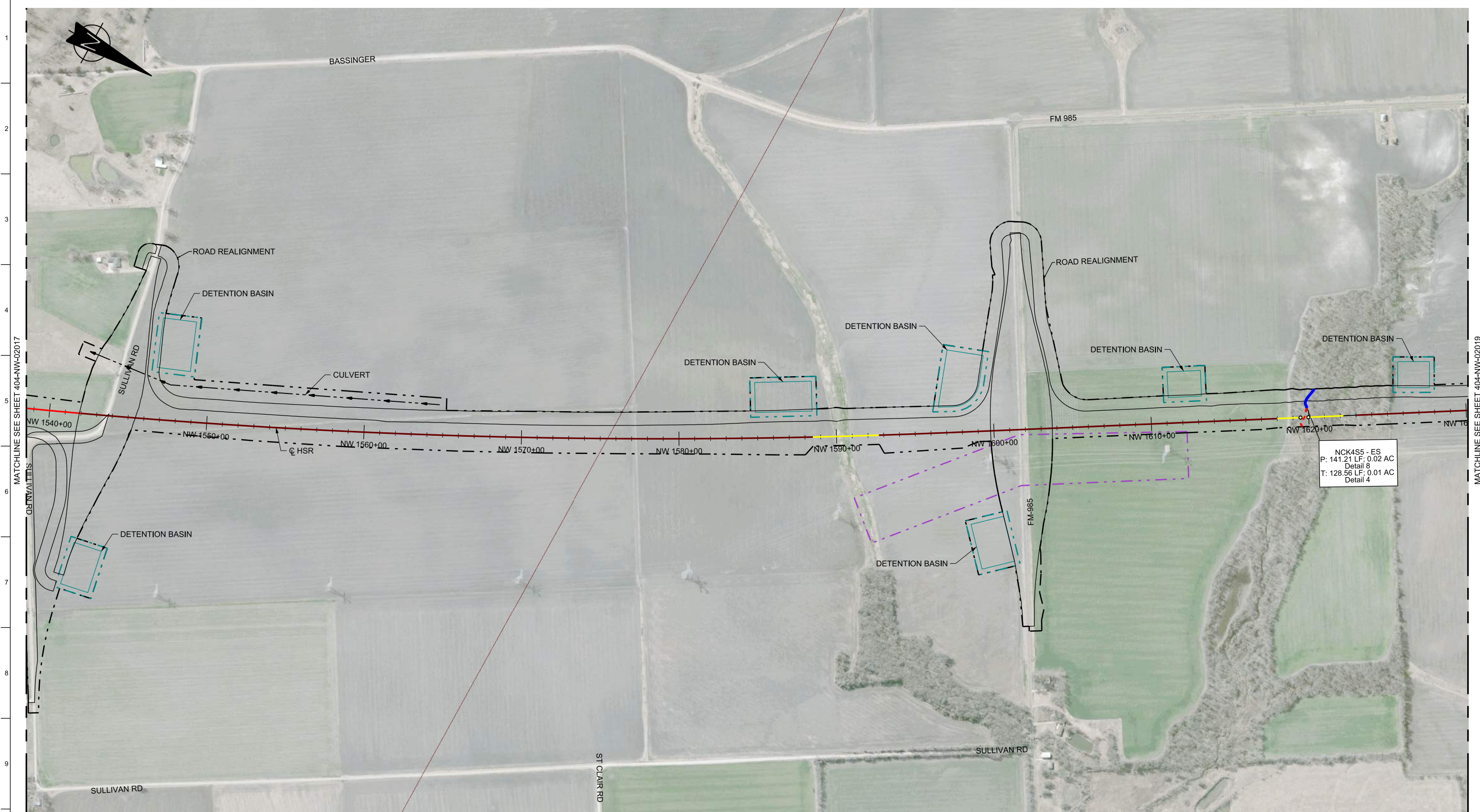


Client
1409 South Lamar Street, Suite 1022, Dallas, Texas 75215

Drawing Title
NAVARRO WEST SEGMENT

PLAN VIEW (FRA SEG. 3A)
STA NW 1450+00 TO 1540+00

Scale AS SHOWN		
Drawing Status NOT FOR CONSTRUCTION		
Job No 234180	Drawing No 404-NW-02017	Rev 03



NCK4S5 - ES
 P: 141.21 LF; 0.02 AC
 Detail 8
 T: 128.56 LF; 0.01 AC
 Detail 4

RAIL CONSTRUCTION TYPE	PERMANENT IMPACTS	TEMPORARY IMPACTS	OTHER
CUT	EMERGENT WETLAND	EMERGENT WETLAND	LIMITS OF DISTURBANCE (CONSTRUCTION FOOTPRINT)
EMBANKMENT	FORESTED WETLAND	POND	PERMANENT UTILITIES IMPACTS
RETAIN FILL	POND	STREAMS	TEMPORARY UTILITIES IMPACTS
RETAIN CUT	SCRUB/SHRUB WETLAND	OTHER IMPACTS	ROADWAY IMPACTS
VIADUCT	STREAMS	CONVERSION WETLAND	CULVERT FLOW
			PIER LOCATIONS

- NOTES:
- POTENTIALLY NON-JURISDICTIONAL WATERBODIES DO NOT INCLUDE IMPACT QUANTITIES.
 - P = PERMANENT IMPACT
 - T = TEMPORARY IMPACT
 - ES = EPHEMERAL STREAM
 - IS = INTERMITTENT STREAM
 - PS = PERENNIAL STREAM
 - C = CONVERSION
 - TEMPORARY, PERMANENT AND CONVERSION IMPACTS ARE SUMMED UP IN ONE CALLOUT BOX FOR EACH FEATURE.
 - UTILITY AND TEMPORARY CONSTRUCTION IMPACTS DO NOT REFERENCE A DETAIL.
 - DRAWINGS ARE PRINTED AT HALF-SIZE (11X17).

PLAN

REFER TO RAIL PLAN & PROFILE DRAWINGS
 No. CVL-NW-01529 & CVL-NW-01530

HORIZ.

REV	DATE	BY	CHK	APP	DESCRIPTION

DESIGNED BY
R. ZARATE

DRAWN BY
J. HUFNAGEL

CHECKED BY
R. ALDREDGE

IN CHARGE
R. ZARATE

DATE
OCT. 2017

DALLAS TO HOUSTON
 HIGH-SPEED RAIL
 APPLICANT: TCRR
 SWF-2011-00483



Arup Texas, Inc.
 10370 Richmond Ave., Suite 475
 Houston, Texas 77042 USA
 Tel (713) 783 2787 Fax (713) 343 1467
 www.arup.com
 Texas Registered Engineering Firm: F-1990



2711 North Haskell Ave., Suite 3300
 Dallas, Texas 75204
 Tel (214) 217 2200 Fax (214) 217 2201
 www.freese.com
 Texas Registered Engineering Firm: F-2144



Client
 1409 South Lamar Street, Suite 1022, Dallas, Texas 75215

Drawing Title
NAVARRO WEST SEGMENT

PLAN VIEW (FRA SEG. 3A)
STA NW 1540+00 TO 1630+00

Scale AS SHOWN		
Drawing Status NOT FOR CONSTRUCTION		
Job No 234180	Drawing No 404-NW-02018	Rev 03



MATCHLINE SEE SHEET 404-NW-02018

END OF NAVARRO WEST SEGMENT

98+00 --- NW-1637+09
 C HSR

FM 984

FM 984 FM 985

FM 984

FM 984

HODGE RD

HODGE RD

HODGE RD

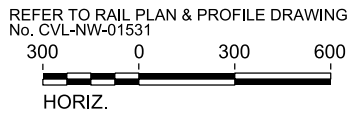
BIG ONION CREEK

RAIL CONSTRUCTION TYPE	PERMANENT IMPACTS	TEMPORARY IMPACTS	OTHER
CUT	EMERGENT WETLAND	EMERGENT WETLAND	LIMITS OF DISTURBANCE (CONSTRUCTION FOOTPRINT)
EMBANKMENT	FORESTED WETLAND	POND	PERMANENT UTILITIES IMPACTS
RETAIN FILL	POND	STREAMS	TEMPORARY UTILITIES IMPACTS
RETAIN CUT	SCRUB/SHRUB WETLAND	OTHER IMPACTS	ROADWAY IMPACTS
VIADUCT	STREAMS	CONVERSION WETLAND	CULVERT FLOW
			PIER LOCATIONS

NOTES:

- POTENTIALLY NON-JURISDICTIONAL WATERBODIES DO NOT INCLUDE IMPACT QUANTITIES.
- P = PERMANENT IMPACT
- T = TEMPORARY IMPACT
- ES = EPHEMERAL STREAM
- IS = INTERMITTENT STREAM
- PS = PERENNIAL STREAM
- C = CONVERSION
- TEMPORARY, PERMANENT AND CONVERSION IMPACTS ARE SUMMED UP IN ONE CALLOUT BOX FOR EACH FEATURE.
- UTILITY AND TEMPORARY CONSTRUCTION IMPACTS DO NOT REFERENCE A DETAIL.
- DRAWINGS ARE PRINTED AT HALF-SIZE (11X17).

PLAN



REV	DATE	BY	CHK	APP	DESCRIPTION

DESIGNED BY
R. ZARATE

DRAWN BY
J. HUFNAGEL

CHECKED BY
R. ALDREDGE

IN CHARGE
R. ZARATE

DATE
OCT. 2017

DALLAS TO HOUSTON
HIGH-SPEED RAIL
APPLICANT: TCRR
SWF-2011-00483



Arup Texas, Inc.
10370 Richmond Ave., Suite 475
Houston, Texas 77042 USA
Tel (713) 783 2787 Fax (713) 343 1467
www.arup.com
Texas Registered Engineering Firm: F-1990



2711 North Haskell Ave., Suite 3300
Dallas, Texas 75204
Tel (214) 217 2200 Fax (214) 217 2201
www.freese.com
Texas Registered Engineering Firm: F-2144



Client
1409 South Lamar Street, Suite 1022, Dallas, Texas 75215

Drawing Title
NAVARRO WEST SEGMENT

PLAN VIEW (FRA SEG. 3A)
STA NW 1630+00 TO 1637+09

Scale AS SHOWN		
Drawing Status NOT FOR CONSTRUCTION		
Job No 234180	Drawing No 404-NW-02019	Rev 03