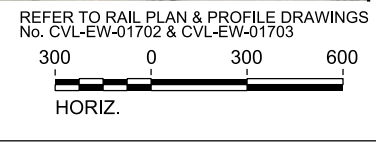


RAIL CONSTRUCTION TYPE	PERMANENT IMPACTS	TEMPORARY IMPACTS	OTHER
CUT	EMERGENT WETLAND	EMERGENT WETLAND	LIMITS OF DISTURBANCE (CONSTRUCTION FOOTPRINT)
EMBANKMENT	FORESTED WETLAND	POND	PERMANENT UTILITIES IMPACTS
RETAIN FILL	POND	STREAMS	TEMPORARY UTILITIES IMPACTS
RETAIN CUT	SCRUB/SHRUB WETLAND	OTHER IMPACTS	ROADWAY IMPACTS
VIADUCT	STREAMS	CONVERSION WETLAND	CULVERT FLOW
			PIER LOCATIONS

- NOTES:
- POTENTIALLY NON-JURISDICTIONAL WATERBODIES DO NOT INCLUDE IMPACT QUANTITIES.
 - P = PERMANENT IMPACT
 - T = TEMPORARY IMPACT
 - ES = EPHEMERAL STREAM
 - IS = INTERMITTENT STREAM
 - PS = PERENNIAL STREAM
 - C = CONVERSION
 - TEMPORARY, PERMANENT AND CONVERSION IMPACTS ARE SUMMED UP IN ONE CALLOUT BOX FOR EACH FEATURE.
 - UTILITY AND TEMPORARY CONSTRUCTION IMPACTS DO NOT REFERENCE A DETAIL.
 - DRAWINGS ARE PRINTED AT HALF-SIZE (11X17).



REV	DATE	BY	CHK	APP	DESCRIPTION

DESIGNED BY
R. ZARATE

DRAWN BY
J. HUFNAGEL

CHECKED BY
R. ALDREDGE

IN CHARGE
R. ZARATE

DATE
OCT. 2017

DALLAS TO HOUSTON
HIGH-SPEED RAIL
APPLICANT: TCRR
SWF-2011-00483

ARUP

Arup Texas, Inc.
10370 Richmond Ave., Suite 475
Houston, Texas 77042 USA
Tel (713) 783 2787 Fax (713) 343 1467
www.arup.com
Texas Registered Engineering Firm: F-1990

FREES & NICHOLS

2711 North Haskell Ave., Suite 3300
Dallas, Texas 75204
Tel (214) 217 2200 Fax (214) 217 2201
www.frees.com
Texas Registered Engineering Firm: F-2144

Client

1409 South Lamar Street, Suite 1022, Dallas, Texas 75215

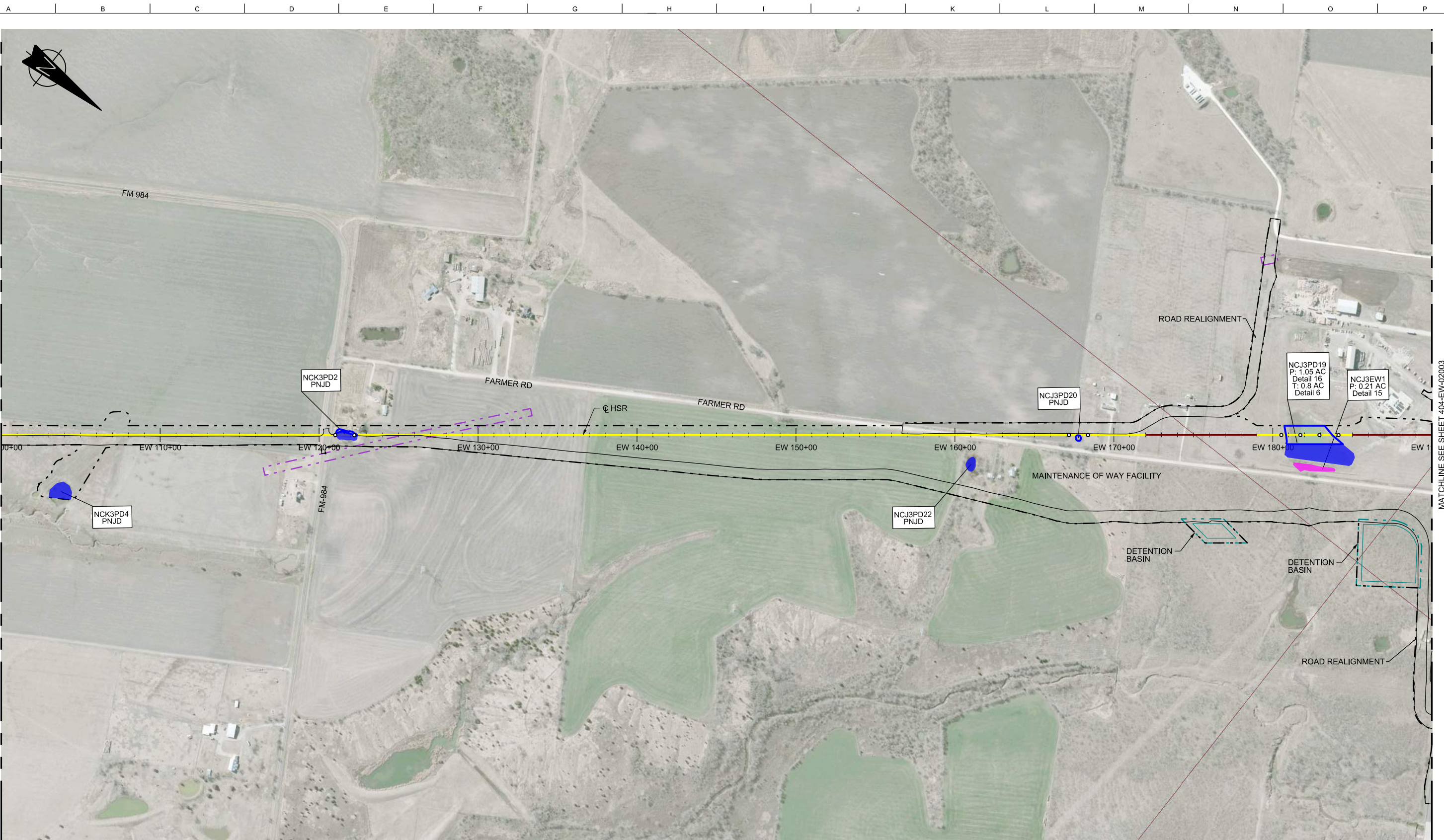
Drawing Title
ELLIS WEST SEGMENT

PLAN VIEW (FRA SEG. 2A)
STA EW 10+00 TO 100+00

Scale
AS SHOWN

Drawing Status
NOT FOR CONSTRUCTION

Job No	Drawing No	Rev
234180	404-EW-02001	03



MATCHLINE SEE SHEET 404-EW-02001

MATCHLINE SEE SHEET 404-EW-02003

RAIL CONSTRUCTION TYPE	PERMANENT IMPACTS	TEMPORARY IMPACTS	OTHER
CUT	EMERGENT WETLAND	EMERGENT WETLAND	LIMITS OF DISTURBANCE (CONSTRUCTION FOOTPRINT)
EMBANKMENT	FORESTED WETLAND	POND	PERMANENT UTILITIES IMPACTS
RETAIN FILL	POND	STREAMS	TEMPORARY UTILITIES IMPACTS
RETAIN CUT	SCRUB/SHRUB WETLAND	OTHER IMPACTS	ROADWAY IMPACTS
VIADUCT	STREAMS	CONVERSION WETLAND	CULVERT FLOW
			PIER LOCATIONS

- NOTES:**
- POTENTIALLY NON-JURISDICTIONAL WATERBODIES DO NOT INCLUDE IMPACT QUANTITIES.
 - P = PERMANENT IMPACT
 - T = TEMPORARY IMPACT
 - ES = EPHEMERAL STREAM
 - IS = INTERMITTENT STREAM
 - PS = PERENNIAL STREAM
 - C = CONVERSION
 - TEMPORARY, PERMANENT AND CONVERSION IMPACTS ARE SUMMED UP IN ONE CALLOUT BOX FOR EACH FEATURE.
 - UTILITY AND TEMPORARY CONSTRUCTION IMPACTS DO NOT REFERENCE A DETAIL.
 - DRAWINGS ARE PRINTED AT HALF-SIZE (11X17).

PLAN

REFER TO RAIL PLAN & PROFILE DRAWINGS
No. CVL-EW-01703, CVL-EW-01704, & CVL-EW-01705

300 0 300 600
HORIZ.

REV	DATE	BY	CHK	APP	DESCRIPTION

DESIGNED BY
R. ZARATE

DRAWN BY
J. HUFNAGEL

CHECKED BY
R. ALDREDGE

IN CHARGE
R. ZARATE

DATE
OCT. 2017

DALLAS TO HOUSTON
HIGH-SPEED RAIL
APPLICANT: TCRR
SWF-2011-00483



Arup Texas, Inc.
10370 Richmond Ave., Suite 475
Houston, Texas 77042 USA
Tel (713) 783 2787 Fax (713) 343 1467
www.arup.com
Texas Registered Engineering Firm: F-1990



2711 North Haskell Ave., Suite 3300
Dallas, Texas 75204
Tel (214) 217 2200 Fax (214) 217 2201
www.freese.com
Texas Registered Engineering Firm: F-2144

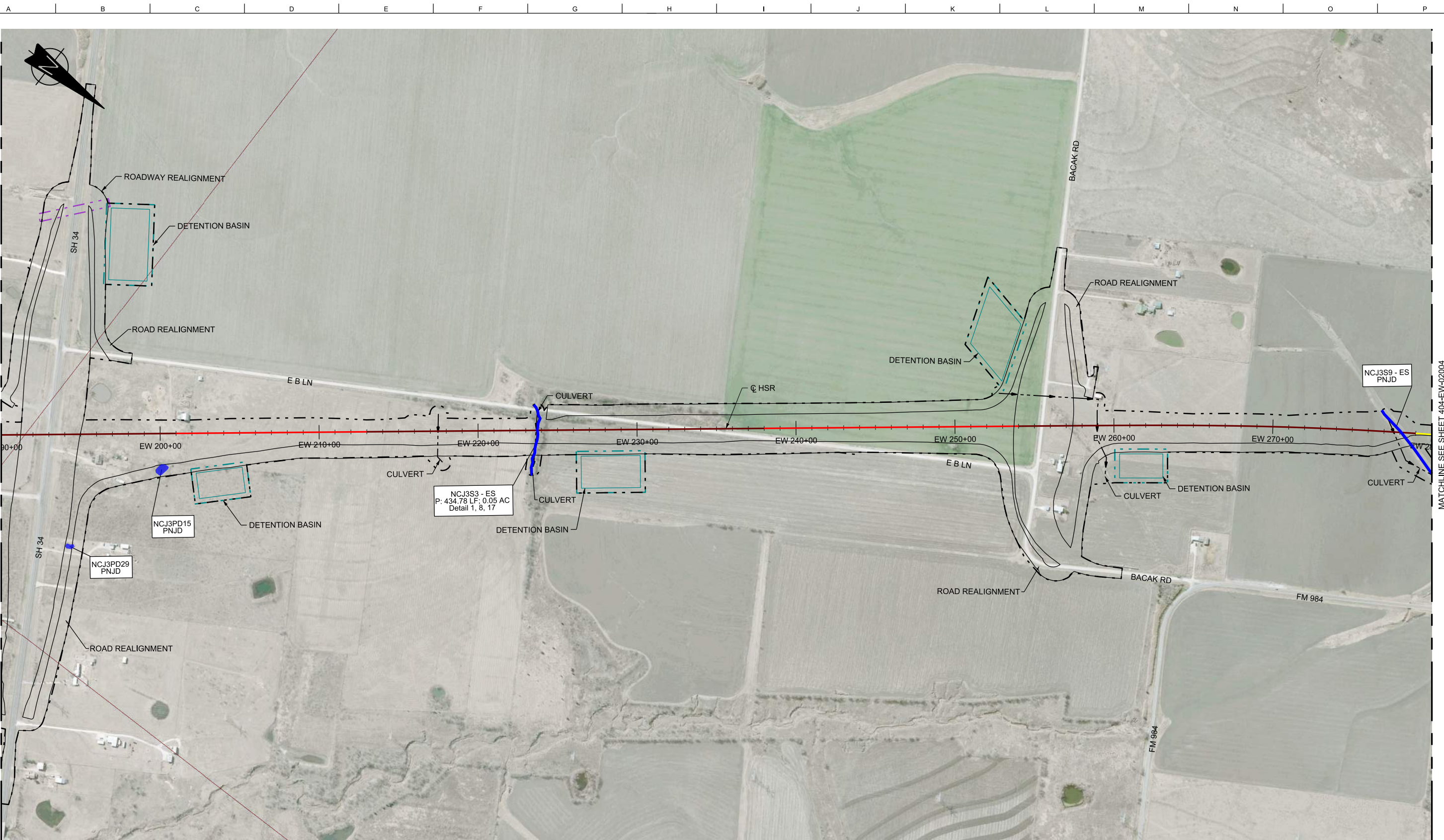


Client
1409 South Lamar Street, Suite 1022, Dallas, Texas 75215

Drawing Title
ELLIS WEST SEGMENT

PLAN VIEW (FRA SEG. 2A)
STA EW 100+00 TO 190+00

Scale AS SHOWN		
Drawing Status NOT FOR CONSTRUCTION		
Job No 234180	Drawing No 404-EW-02002	Rev 03



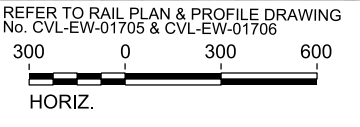
MATCHLINE SEE SHEET 404-EW-02002

MATCHLINE SEE SHEET 404-EW-02004

RAIL CONSTRUCTION TYPE	PERMANENT IMPACTS	TEMPORARY IMPACTS	OTHER
CUT	EMERGENT WETLAND	EMERGENT WETLAND	LIMITS OF DISTURBANCE (CONSTRUCTION FOOTPRINT)
EMBANKMENT	FORESTED WETLAND	POND	PERMANENT UTILITIES IMPACTS
RETAIN FILL	SCRUB/SHRUB WETLAND	STREAMS	TEMPORARY UTILITIES IMPACTS
RETAIN CUT	STREAMS	OTHER IMPACTS	ROADWAY IMPACTS
VIADUCT		CONVERSION WETLAND	CULVERT FLOW
			PIER LOCATIONS

- NOTES:
- POTENTIALLY NON-JURISDICTIONAL WATERBODIES DO NOT INCLUDE IMPACT QUANTITIES.
 - P = PERMANENT IMPACT
 - T = TEMPORARY IMPACT
 - ES = EPHEMERAL STREAM
 - IS = INTERMITTENT STREAM
 - PS = PERENNIAL STREAM
 - C = CONVERSION
 - TEMPORARY, PERMANENT AND CONVERSION IMPACTS ARE SUMMED UP IN ONE CALLOUT BOX FOR EACH FEATURE.
 - UTILITY AND TEMPORARY CONSTRUCTION IMPACTS DO NOT REFERENCE A DETAIL.
 - DRAWINGS ARE PRINTED AT HALF-SIZE (11X17).

PLAN



REV	DATE	BY	CHK	APP	DESCRIPTION

DESIGNED BY
R. ZARATE

DRAWN BY
J. HUFNAGEL

CHECKED BY
R. ALDREDGE

IN CHARGE
R. ZARATE

DATE
OCT. 2017

DALLAS TO HOUSTON
HIGH-SPEED RAIL
APPLICANT: TCRR
SWF-2011-00483



Arup Texas, Inc.
10370 Richmond Ave., Suite 475
Houston, Texas 77042 USA
Tel (713) 783 2787 Fax (713) 343 1467
www.arup.com
Texas Registered Engineering Firm: F-1990



2711 North Haskell Ave., Suite 3300
Dallas, Texas 75204
Tel (214) 217 2200 Fax (214) 217 2201
www.freese.com
Texas Registered Engineering Firm: F-2144

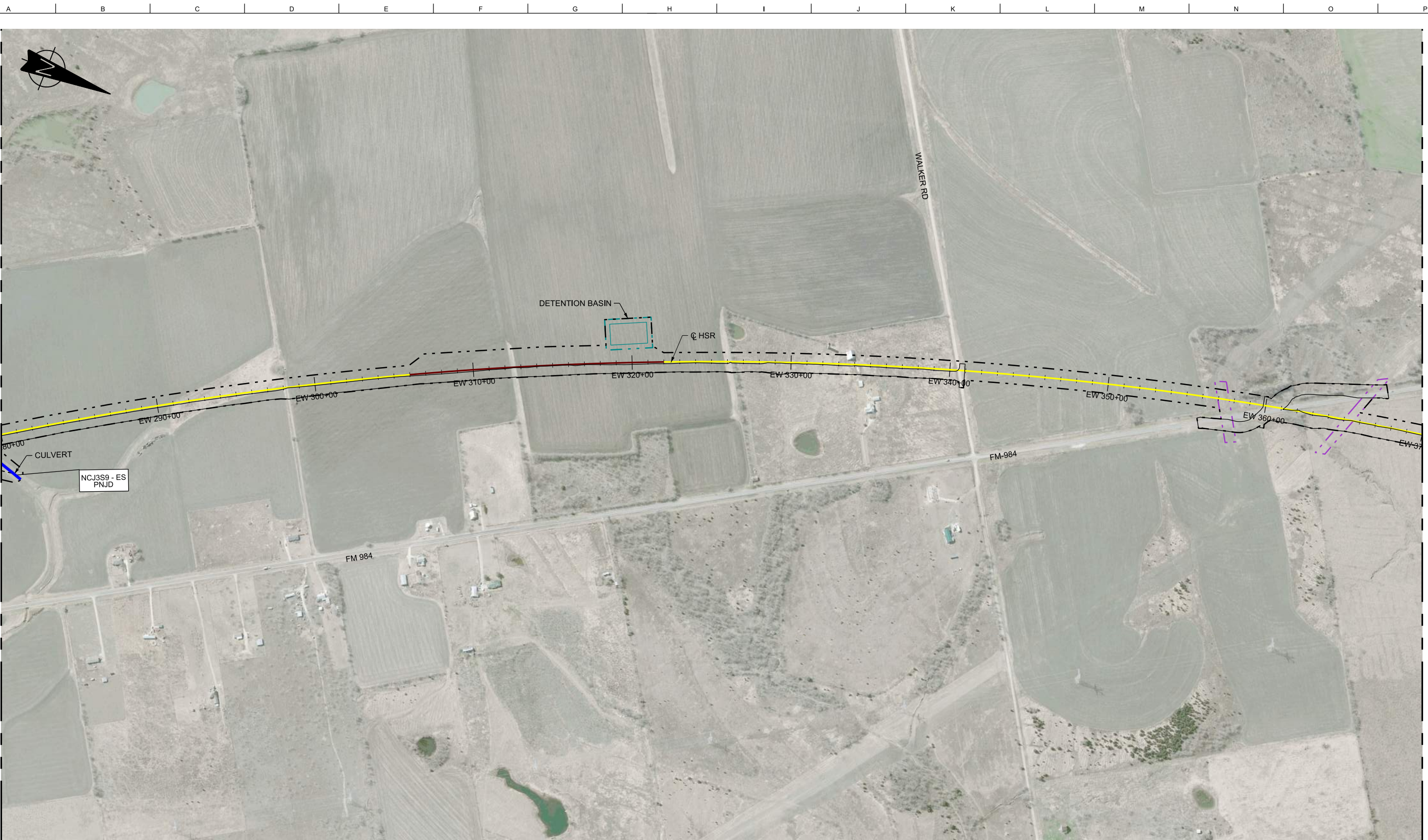


Client
1409 South Lamar Street, Suite 1022, Dallas, Texas 75215

Drawing Title
ELLIS WEST SEGMENT

**PLAN VIEW (FRA SEG. 2A)
STA EW 190+00 TO 280+00**

Scale AS SHOWN		
Drawing Status NOT FOR CONSTRUCTION		
Job No 234180	Drawing No 404-EW-02003	Rev 03



MATCHLINE SEE SHEET 404-EW-02003

MATCHLINE SEE SHEET 404-EW-02005

RAIL CONSTRUCTION TYPE	PERMANENT IMPACTS	TEMPORARY IMPACTS	OTHER
CUT	EMERGENT WETLAND	EMERGENT WETLAND	LIMITS OF DISTURBANCE (CONSTRUCTION FOOTPRINT)
EMBANKMENT	FORESTED WETLAND	POND	PERMANENT UTILITIES IMPACTS
RETAIN FILL	POND	STREAMS	TEMPORARY UTILITIES IMPACTS
RETAIN CUT	SCRUB/SHRUB WETLAND	OTHER IMPACTS	ROADWAY IMPACTS
VIADUCT	STREAMS	CONVERSION WETLAND	CULVERT FLOW
			PIER LOCATIONS

- NOTES:**
- POTENTIALLY NON-JURISDICTIONAL WATERBODIES DO NOT INCLUDE IMPACT QUANTITIES.
 - P = PERMANENT IMPACT
 - T = TEMPORARY IMPACT
 - ES = EPHEMERAL STREAM
 - IS = INTERMITTENT STREAM
 - PS = PERENNIAL STREAM
 - C = CONVERSION
 - TEMPORARY, PERMANENT AND CONVERSION IMPACTS ARE SUMMED UP IN ONE CALLOUT BOX FOR EACH FEATURE.
 - UTILITY AND TEMPORARY CONSTRUCTION IMPACTS DO NOT REFERENCE A DETAIL.
 - DRAWINGS ARE PRINTED AT HALF-SIZE (11X17).

PLAN

REFER TO RAIL PLAN & PROFILE DRAWINGS
No. CVL-EW-01706, CVL-EW-01707, & CVL-EW-01708

300 0 300 600
HORIZ.

REV	DATE	BY	CHK	APP	DESCRIPTION

DESIGNED BY
R. ZARATE

DRAWN BY
J. HUFNAGEL

CHECKED BY
R. ALDREDGE

IN CHARGE
R. ZARATE

DATE
OCT. 2017

DALLAS TO HOUSTON
HIGH-SPEED RAIL
APPLICANT: TCRR
SWF-2011-00483

ARUP

Arup Texas, Inc.
10370 Richmond Ave., Suite 475
Houston, Texas 77042 USA
Tel (713) 783 2787 Fax (713) 343 1467
www.arup.com
Texas Registered Engineering Firm: F-1990

FREESSE & NICHOLS

2711 North Haskell Ave., Suite 3300
Dallas, Texas 75204
Tel (214) 217 2200 Fax (214) 217 2201
www.freesse.com
Texas Registered Engineering Firm: F-2144

Client

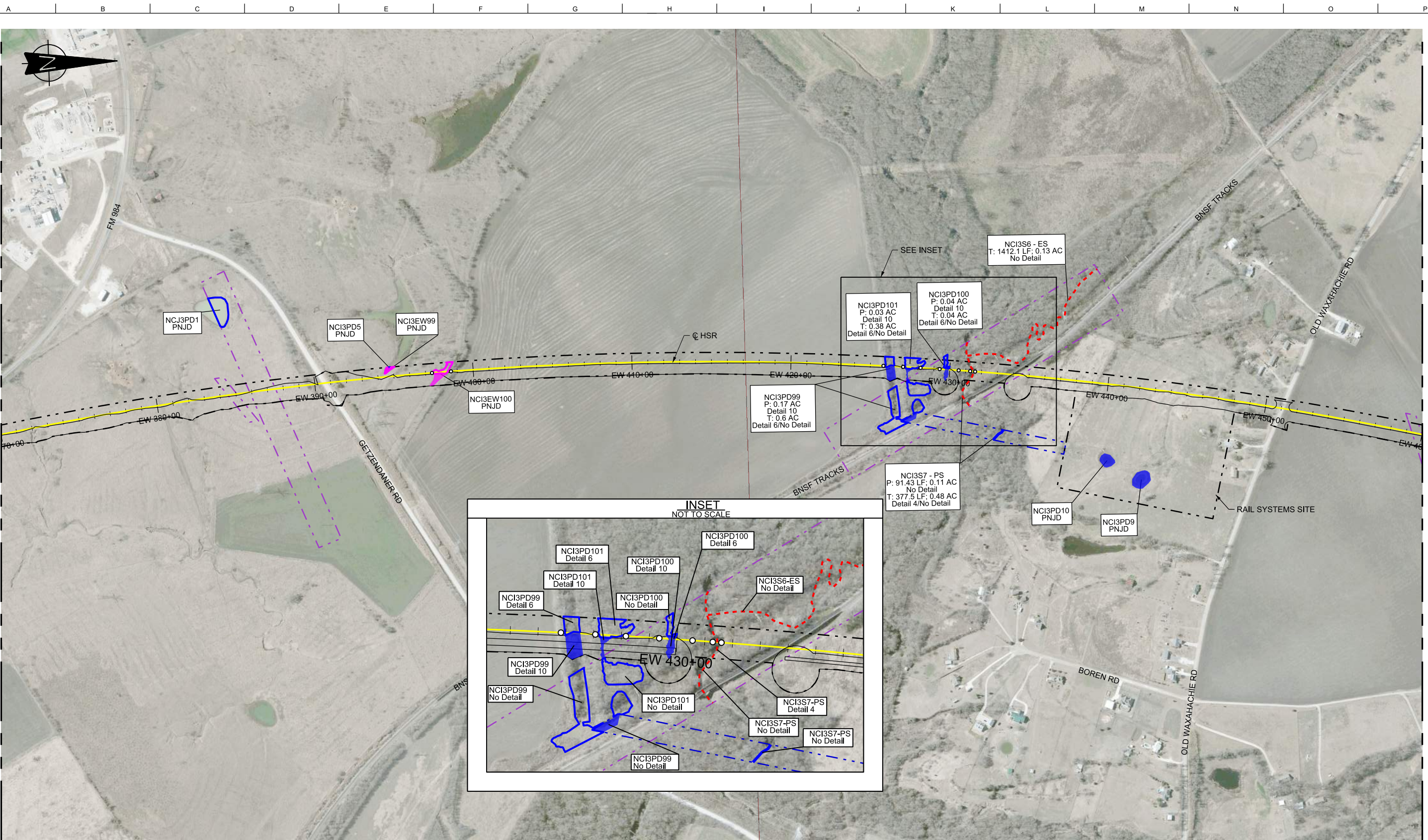
TEXAS CENTRAL

1409 South Lamar Street, Suite 1022, Dallas, Texas 75215

Drawing Title
ELLIS WEST SEGMENT

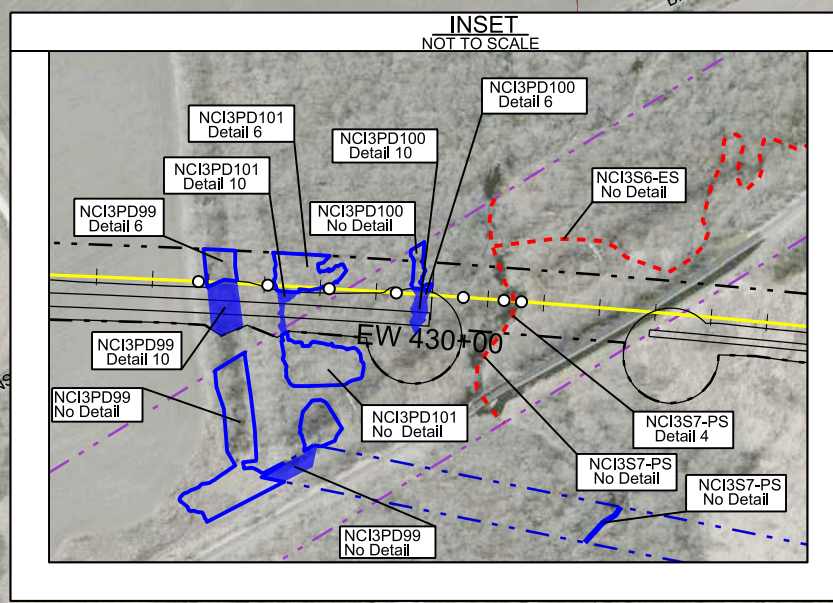
PLAN VIEW (FRA SEG. 2A)
STA EW 280+00 TO 370+00

Scale AS SHOWN		
Drawing Status NOT FOR CONSTRUCTION		
Job No 234180	Drawing No 404-EW-02004	Rev 03



MATCHLINE SEE SHEET 404-EW-02004

MATCHLINE SEE SHEET 404-EW-02006



RAIL CONSTRUCTION TYPE	PERMANENT IMPACTS	TEMPORARY IMPACTS	OTHER
CUT	EMERGENT WETLAND	EMERGENT WETLAND	LIMITS OF DISTURBANCE (CONSTRUCTION FOOTPRINT)
EMBANKMENT	FORESTED WETLAND	POND	PERMANENT UTILITIES IMPACTS
RETAIN FILL	POND	STREAMS	TEMPORARY UTILITIES IMPACTS
RETAIN CUT	SCRUB/SHRUB WETLAND	OTHER IMPACTS	ROADWAY IMPACTS
VIADUCT	STREAMS	CONVERSION WETLAND	CULVERT FLOW
			PIER LOCATIONS

- NOTES:
- POTENTIALLY NON-JURISDICTIONAL WATERBODIES DO NOT INCLUDE IMPACT QUANTITIES.
 - P = PERMANENT IMPACT
 - T = TEMPORARY IMPACT
 - ES = EPHEMERAL STREAM
 - IS = INTERMITTENT STREAM
 - PS = PERENNIAL STREAM
 - C = CONVERSION
 - TEMPORARY, PERMANENT AND CONVERSION IMPACTS ARE SUMMED UP IN ONE CALLOUT BOX FOR EACH FEATURE.
 - UTILITY AND TEMPORARY CONSTRUCTION IMPACTS DO NOT REFERENCE A DETAIL.
 - DRAWINGS ARE PRINTED AT HALF-SIZE (11X17).

REFER TO RAIL PLAN & PROFILE DRAWINGS No. CVL-EW-01708 & CVL-EW-01709

300 0 300 600
HORIZ.

REV	DATE	BY	CHK	APP	DESCRIPTION

DESIGNED BY
R. ZARATE

DRAWN BY
J. HUFNAGEL

CHECKED BY
R. ALDREDGE

IN CHARGE
R. ZARATE

DATE
OCT. 2017

DALLAS TO HOUSTON
HIGH-SPEED RAIL
APPLICANT: TCRR
SWF-2011-00483

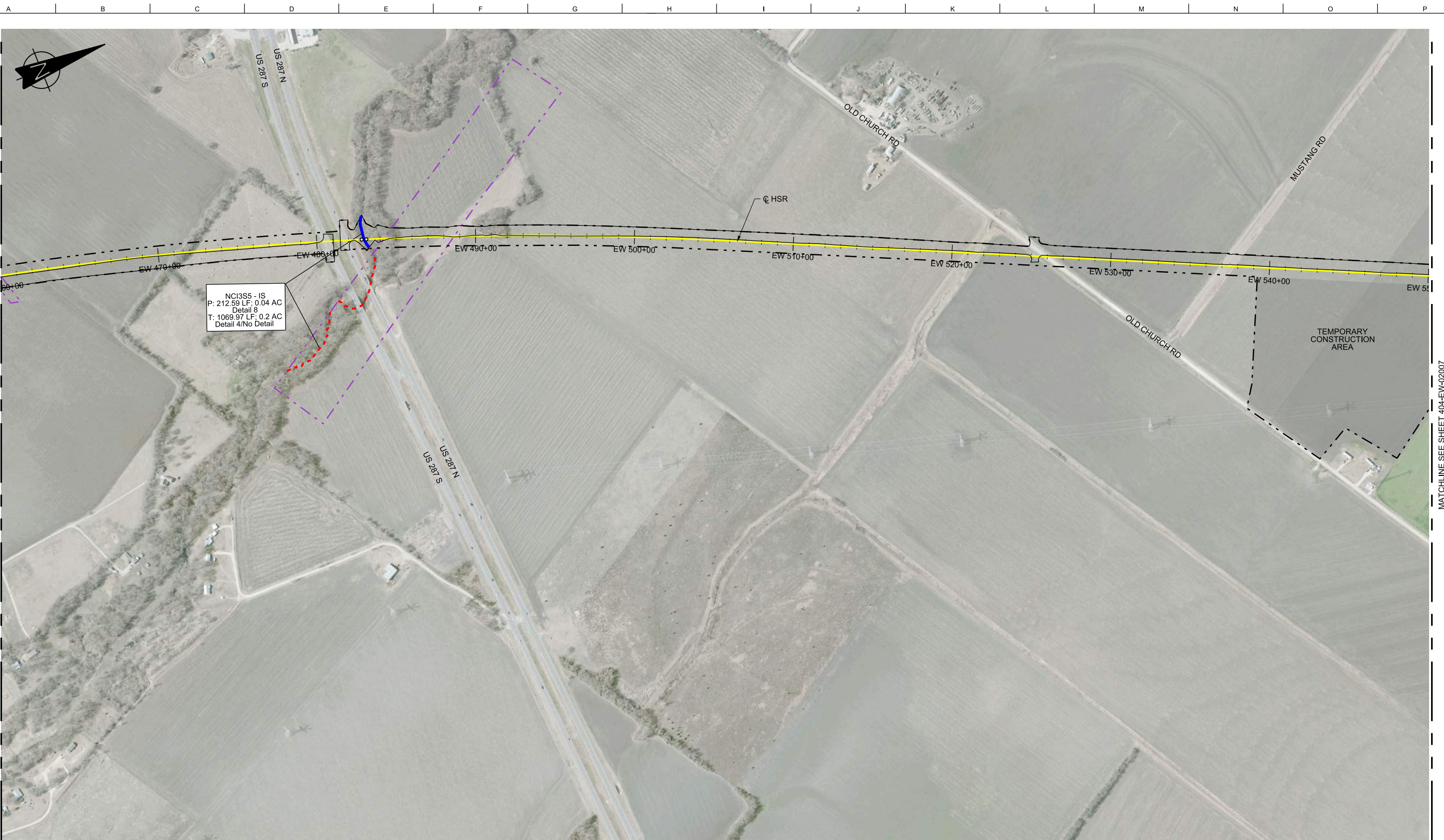
ARUP
Arup Texas, Inc.
10370 Richmond Ave., Suite 475
Houston, Texas 77042 USA
Tel (713) 783 2787 Fax (713) 343 1467
www.arup.com
Texas Registered Engineering Firm: F-1990

FRESE & NICHOLS
2711 North Haskell Ave., Suite 3300
Dallas, Texas 75204
Tel (214) 217 2200 Fax (214) 217 2201
www.freese.com
Texas Registered Engineering Firm: F-2144

Client
TEXAS CENTRAL
1409 South Lamar Street, Suite 1022, Dallas, Texas 75215

Drawing Title
ELLIS WEST SEGMENT
PLAN VIEW (FRA SEG. 2A)
STA EW 370+00 TO 460+00

Scale AS SHOWN	Drawing Status NOT FOR CONSTRUCTION	
Job No 234180	Drawing No 404-EW-02005	Rev 03



MATCHLINE SEE SHEET 404-EW-02005

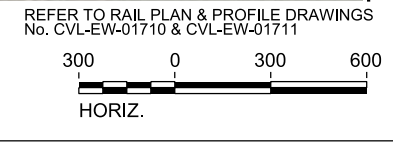
MATCHLINE SEE SHEET 404-EW-02007

PLOT BY: NYPWICS01S PLOT TIME: 10/13/2016 4:51:11 PM

RAIL CONSTRUCTION TYPE	PERMANENT IMPACTS	TEMPORARY IMPACTS	OTHER
CUT	EMERGENT WETLAND	EMERGENT WETLAND	LIMITS OF DISTURBANCE (CONSTRUCTION FOOTPRINT)
EMBANKMENT	FORESTED WETLAND	POND	PERMANENT UTILITIES IMPACTS
RETAIN FILL	POND	STREAMS	TEMPORARY UTILITIES IMPACTS
RETAIN CUT	SCRUB/SHRUB WETLAND	OTHER IMPACTS	ROADWAY IMPACTS
VIADUCT	STREAMS	CULVERT FLOW	PIER LOCATIONS
		CONVERSION WETLAND	

NOTES:
 1. POTENTIALLY NON-JURISDICTIONAL WATERBODIES DO NOT INCLUDE IMPACT QUANTITIES.
 2. P = PERMANENT IMPACT
 3. T = TEMPORARY IMPACT

- | | |
|-----------------------------|---|
| 4. ES = EPHEMERAL STREAM | 8. TEMPORARY, PERMANENT AND CONVERSION IMPACTS ARE SUMMED UP IN ONE CALLOUT BOX FOR EACH FEATURE. |
| 5. IS = INTERMITTENT STREAM | 9. UTILITY AND TEMPORARY CONSTRUCTION IMPACTS DO NOT REFERENCE A DETAIL. |
| 6. PS = PERENNIAL STREAM | 10. DRAWINGS ARE PRINTED AT HALF-SIZE (11X17). |
| 7. C = CONVERSION | |



PLAN

REV	DATE	BY	CHK	APP	DESCRIPTION

DESIGNED BY
R. ZARATE
 DRAWN BY
J. HUFNAGEL
 CHECKED BY
R. ALDREDGE
 IN CHARGE
R. ZARATE
 DATE
OCT. 2017

DALLAS TO HOUSTON
 HIGH-SPEED RAIL
 APPLICANT: TCRR
 SWF-2011-00483



Arup Texas, Inc.
 10370 Richmond Ave., Suite 475
 Houston, Texas 77042 USA
 Tel (713) 783 2787 Fax (713) 343 1467
 www.arup.com
 Texas Registered Engineering Firm: F-1990



2711 North Haskell Ave., Suite 3300
 Dallas, Texas 75204
 Tel (214) 217 2200 Fax (214) 217 2201
 www.freese.com
 Texas Registered Engineering Firm: F-2144

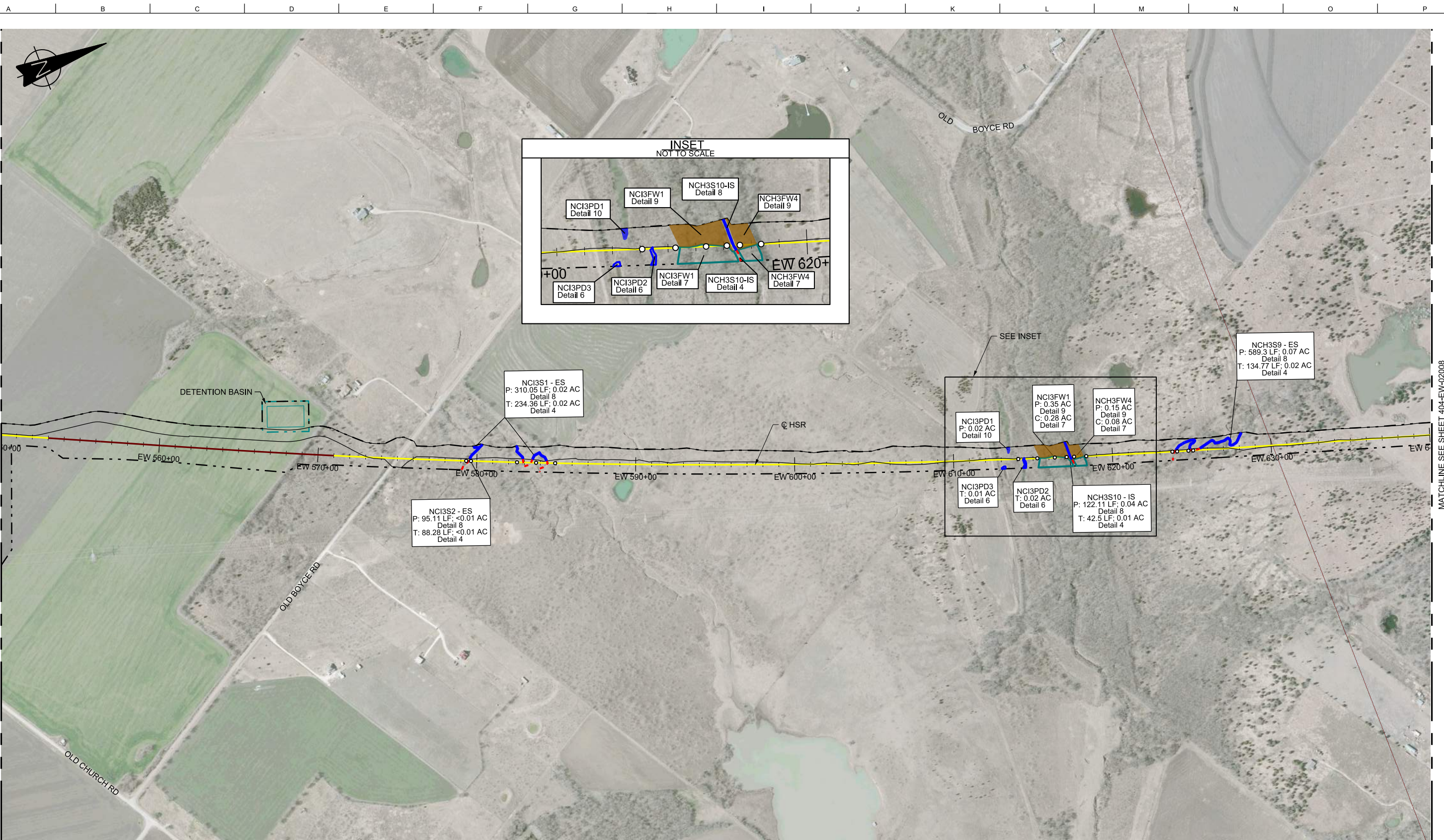


Client
 1409 South Lamar Street, Suite 1022, Dallas, Texas 75215

Drawing Title
ELLIS WEST SEGMENT

PLAN VIEW (FRA SEG. 2A)
STA EW 460+00 TO 550+00

Scale AS SHOWN		
Drawing Status NOT FOR CONSTRUCTION		
Job No 234180	Drawing No 404-EW-02006	Rev 03



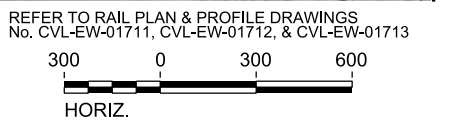
MATCHLINE SEE SHEET 404-EW-02006

MATCHLINE SEE SHEET 404-EW-02008

RAIL CONSTRUCTION TYPE	PERMANENT IMPACTS	TEMPORARY IMPACTS	OTHER
CUT	EMERGENT WETLAND	EMERGENT WETLAND	LIMITS OF DISTURBANCE (CONSTRUCTION FOOTPRINT)
EMBANKMENT	FORESTED WETLAND	POND	PERMANENT UTILITIES IMPACTS
RETAIN FILL	POND	STREAMS	TEMPORARY UTILITIES IMPACTS
RETAIN CUT	SCRUB/SHRUB WETLAND	OTHER IMPACTS	ROADWAY IMPACTS
VIADUCT	STREAMS	CONVERSION WETLAND	CULVERT FLOW
			PIER LOCATIONS

- NOTES:**
- POTENTIALLY NON-JURISDICTIONAL WATERBODIES DO NOT INCLUDE IMPACT QUANTITIES.
 - P = PERMANENT IMPACT
 - T = TEMPORARY IMPACT
 - ES = EPHEMERAL STREAM
 - IS = INTERMITTENT STREAM
 - PS = PERENNIAL STREAM
 - C = CONVERSION
 - TEMPORARY, PERMANENT AND CONVERSION IMPACTS ARE SUMMED UP IN ONE CALLOUT BOX FOR EACH FEATURE.
 - UTILITY AND TEMPORARY CONSTRUCTION IMPACTS DO NOT REFERENCE A DETAIL.
 - DRAWINGS ARE PRINTED AT HALF-SIZE (11X17).

PLAN



REV	DATE	BY	CHK	APP	DESCRIPTION

DESIGNED BY
R. ZARATE
DRAWN BY
J. HUFNAGEL
CHECKED BY
R. ALDREDGE
IN CHARGE
R. ZARATE
DATE
OCT. 2017

DALLAS TO HOUSTON
HIGH-SPEED RAIL
APPLICANT: TCRR
SWF-2011-00483



Arup Texas, Inc.
10370 Richmond Ave., Suite 475
Houston, Texas 77042 USA
Tel (713) 783 2787 Fax (713) 343 1467
www.arup.com
Texas Registered Engineering Firm: F-1990



2711 North Haskell Ave., Suite 3300
Dallas, Texas 75204
Tel (214) 217 2200 Fax (214) 217 2201
www.freese.com
Texas Registered Engineering Firm: F-2144



Drawing Title
ELLIS WEST SEGMENT
PLAN VIEW (FRA SEG. 2A)
STA EW 550+00 TO 640+00

Scale AS SHOWN		
Drawing Status NOT FOR CONSTRUCTION		
Job No 234180	Drawing No 404-EW-02007	Rev 03



MATCHLINE SEE SHEET 404-EW-02007

MATCHLINE SEE SHEET 404-EW-02009

RAIL CONSTRUCTION TYPE	PERMANENT IMPACTS	TEMPORARY IMPACTS	OTHER
CUT	EMERGENT WETLAND	EMERGENT WETLAND	LIMITS OF DISTURBANCE (CONSTRUCTION FOOTPRINT)
EMBANKMENT	FORESTED WETLAND	POND	PERMANENT UTILITIES IMPACTS
RETAIN FILL	POND	STREAMS	TEMPORARY UTILITIES IMPACTS
RETAIN CUT	SCRUB/SHRUB WETLAND	OTHER IMPACTS	ROADWAY IMPACTS
VIADUCT	STREAMS	CONVERSION WETLAND	CULVERT FLOW
			PIER LOCATIONS

- NOTES:**
- POTENTIALLY NON-JURISDICTIONAL WATERBODIES DO NOT INCLUDE IMPACT QUANTITIES.
 - P = PERMANENT IMPACT
 - T = TEMPORARY IMPACT
 - ES = EPHEMERAL STREAM
 - IS = INTERMITTENT STREAM
 - PS = PERENNIAL STREAM
 - C = CONVERSION
 - TEMPORARY, PERMANENT AND CONVERSION IMPACTS ARE SUMMED UP IN ONE CALLOUT BOX FOR EACH FEATURE.
 - UTILITY AND TEMPORARY CONSTRUCTION IMPACTS DO NOT REFERENCE A DETAIL.
 - DRAWINGS ARE PRINTED AT HALF-SIZE (11X17).

PLAN

REFER TO RAIL PLAN & PROFILE DRAWINGS No. CVL-EW-01713 & CVL-EW-01714

300 0 300 600
HORIZ.

REV	DATE	BY	CHK	APP	DESCRIPTION

DESIGNED BY
R. ZARATE

DRAWN BY
J. HUFNAGEL

CHECKED BY
R. ALDREDGE

IN CHARGE
R. ZARATE

DATE
OCT. 2017

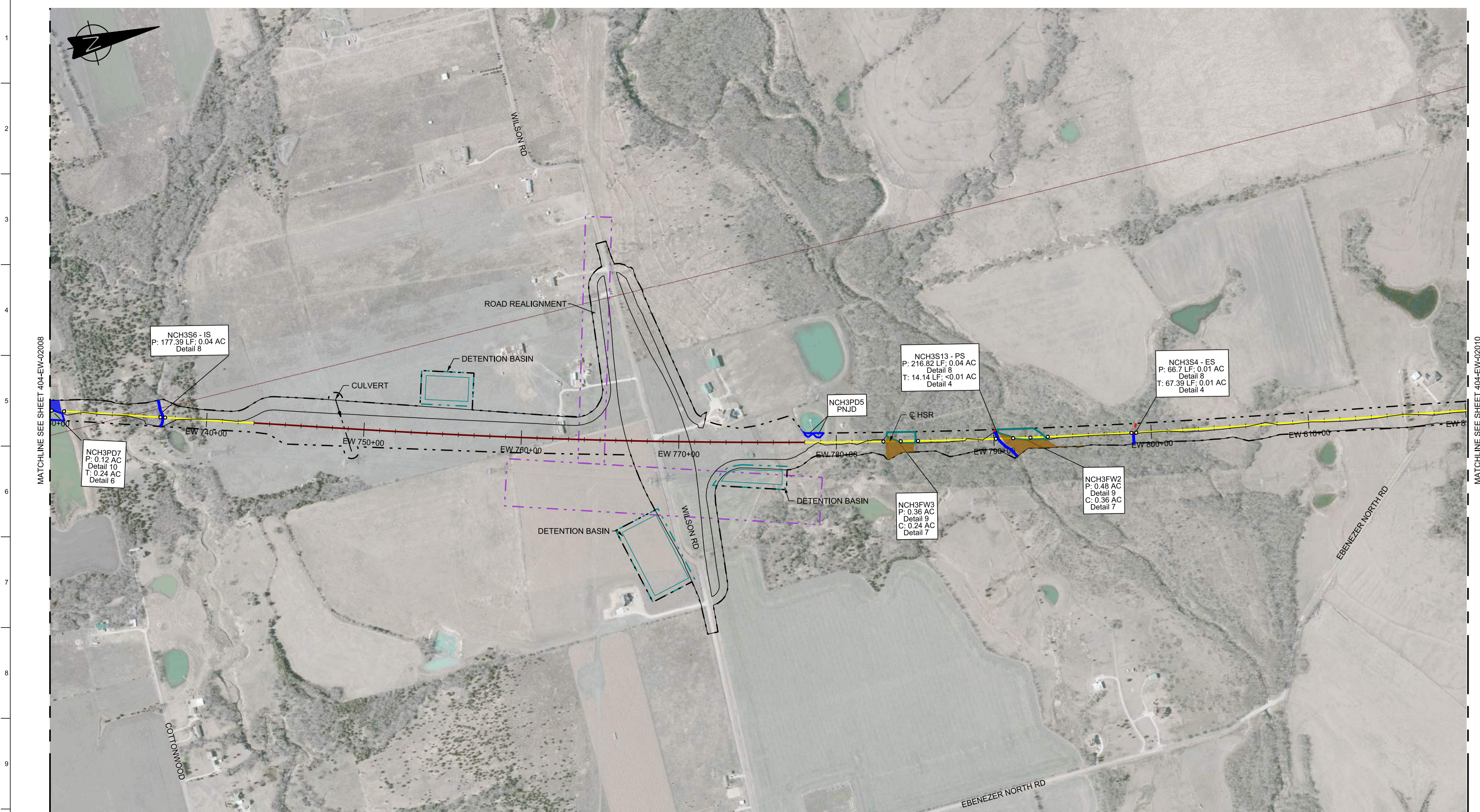
DALLAS TO HOUSTON
HIGH-SPEED RAIL
APPLICANT: TCRR
SWF-2011-00483



Drawing Title
ELLIS WEST SEGMENT

PLAN VIEW (FRA SEG. 2A)
STA EW 640+00 TO 730+00

Scale AS SHOWN		
Drawing Status NOT FOR CONSTRUCTION		
Job No 234180	Drawing No 404-EW-02008	Rev 03



MATCHLINE SEE SHEET 404-EW-02008

MATCHLINE SEE SHEET 404-EW-02010

RAIL CONSTRUCTION TYPE	PERMANENT IMPACTS	TEMPORARY IMPACTS	OTHER
CUT	EMERGENT WETLAND	EMERGENT WETLAND	LIMITS OF DISTURBANCE (CONSTRUCTION FOOTPRINT)
EMBANKMENT	FORESTED WETLAND	POND	PERMANENT UTILITIES IMPACTS
RETAIN FILL	POND	STREAMS	TEMPORARY UTILITIES IMPACTS
RETAIN CUT	SCRUB/SHRUB WETLAND	OTHER IMPACTS	ROADWAY IMPACTS
VIADUCT	STREAMS	CONVERSION WETLAND	CULVERT FLOW
			PIER LOCATIONS

- NOTES:**
- POTENTIALLY NON-JURISDICTIONAL WATERBODIES DO NOT INCLUDE IMPACT QUANTITIES.
 - P = PERMANENT IMPACT
 - T = TEMPORARY IMPACT
 - ES = EPHEMERAL STREAM
 - IS = INTERMITTENT STREAM
 - PS = PERENNIAL STREAM
 - C = CONVERSION
 - TEMPORARY, PERMANENT AND CONVERSION IMPACTS ARE SUMMED UP IN ONE CALLOUT BOX FOR EACH FEATURE.
 - UTILITY AND TEMPORARY CONSTRUCTION IMPACTS DO NOT REFERENCE A DETAIL.
 - DRAWINGS ARE PRINTED AT HALF-SIZE (11X17).

PLAN

REFER TO RAIL PLAN & PROFILE DRAWINGS No. CVL-EW-01715 & CVL-EW-01716

300 0 300 600
HORIZ.

REV	DATE	BY	CHK	APP	DESCRIPTION

DESIGNED BY
R. ZARATE

DRAWN BY
J. HUFNAGEL

CHECKED BY
R. ALDREDGE

IN CHARGE
R. ZARATE

DATE
OCT. 2017

DALLAS TO HOUSTON
HIGH-SPEED RAIL
APPLICANT: TCRR
SWF-2011-00483



Arup Texas, Inc.
10370 Richmond Ave., Suite 475
Houston, Texas 77042 USA
Tel (713) 783 2787 Fax (713) 343 1467
www.arup.com
Texas Registered Engineering Firm: F-1990



2711 North Haskell Ave., Suite 3300
Dallas, Texas 75204
Tel (214) 217 2200 Fax (214) 217 2201
www.freese.com
Texas Registered Engineering Firm: F-2144

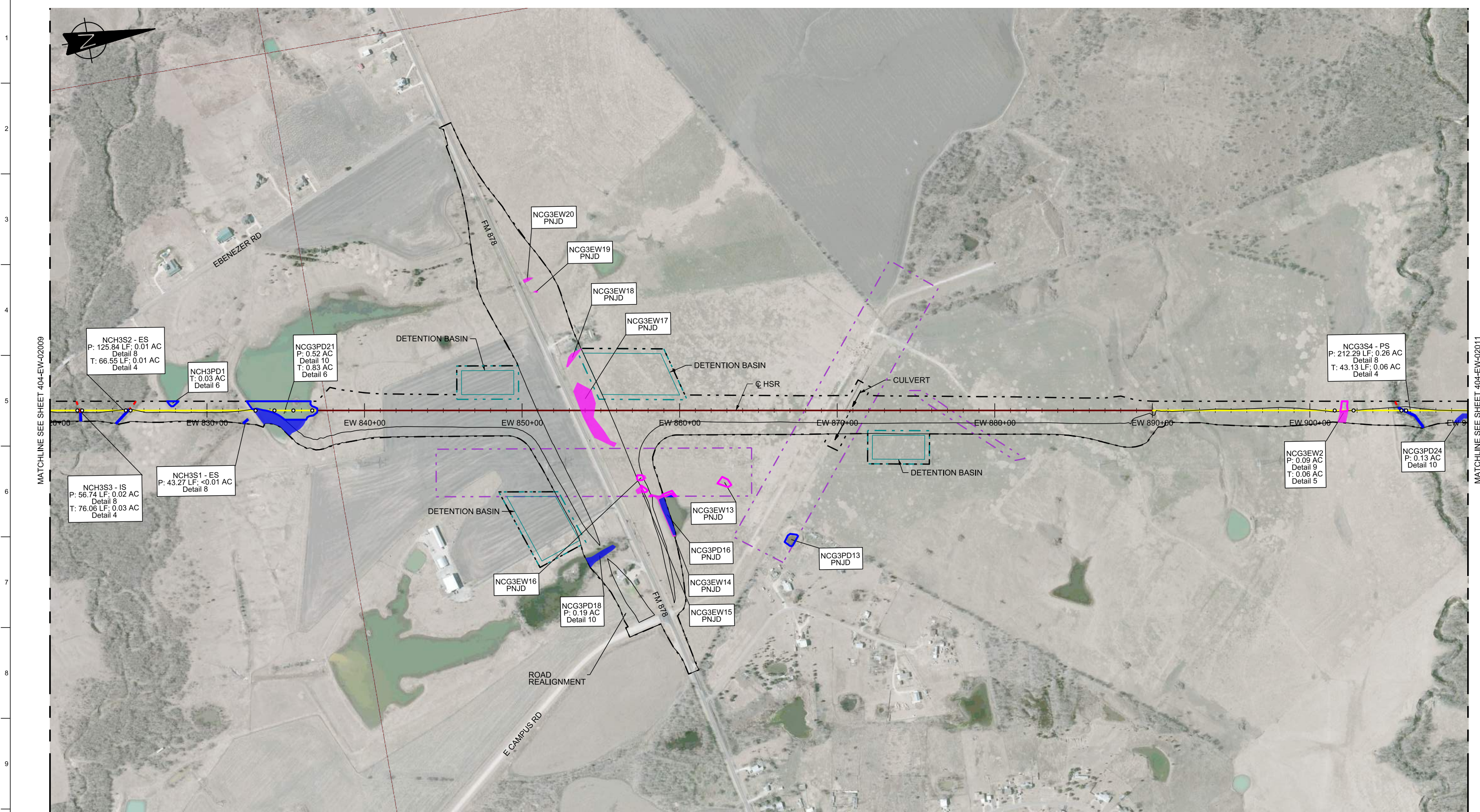


Client
1409 South Lamar Street, Suite 1022, Dallas, Texas 75215

Drawing Title
ELLIS WEST SEGMENT

**PLAN VIEW (FRA SEG. 2A)
STA EW 730+00 TO 820+00**

Scale AS SHOWN		
Drawing Status NOT FOR CONSTRUCTION		
Job No 234180	Drawing No 404-EW-02009	Rev 03



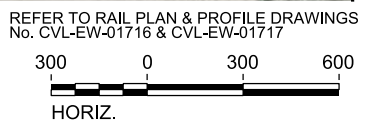
MATCHLINE SEE SHEET 404-EW-02009

MATCHLINE SEE SHEET 404-EW-02011

RAIL CONSTRUCTION TYPE	PERMANENT IMPACTS	TEMPORARY IMPACTS	OTHER
CUT	EMERGENT WETLAND	EMERGENT WETLAND	LIMITS OF DISTURBANCE (CONSTRUCTION FOOTPRINT)
EMBANKMENT	FORESTED WETLAND	POND	PERMANENT UTILITIES IMPACTS
RETAIN FILL	POND	STREAMS	TEMPORARY UTILITIES IMPACTS
RETAIN CUT	SCRUB/SHRUB WETLAND	OTHER IMPACTS	ROADWAY IMPACTS
VIADUCT	STREAMS	CONVERSION WETLAND	CULVERT FLOW
			PIER LOCATIONS

- NOTES:
- POTENTIALLY NON-JURISDICTIONAL WATERBODIES DO NOT INCLUDE IMPACT QUANTITIES.
 - P = PERMANENT IMPACT
 - T = TEMPORARY IMPACT
 - ES = EPHEMERAL STREAM
 - IS = INTERMITTENT STREAM
 - PS = PERENNIAL STREAM
 - C = CONVERSION
 - TEMPORARY, PERMANENT AND CONVERSION IMPACTS ARE SUMMED UP IN ONE CALLOUT BOX FOR EACH FEATURE.
 - UTILITY AND TEMPORARY CONSTRUCTION IMPACTS DO NOT REFERENCE A DETAIL.
 - DRAWINGS ARE PRINTED AT HALF-SIZE (11X17).

PLAN



REV	DATE	BY	CHK	APP	DESCRIPTION

DESIGNED BY
R. ZARATE

DRAWN BY
J. HUFNAGEL

CHECKED BY
R. ALDREDGE

IN CHARGE
R. ZARATE

DATE
OCT. 2017

DALLAS TO HOUSTON
HIGH-SPEED RAIL
APPLICANT: TCRR
SWF-2011-00483



Arup Texas, Inc.
10370 Richmond Ave., Suite 475
Houston, Texas 77042 USA
Tel (713) 783 2787 Fax (713) 343 1467
www.arup.com
Texas Registered Engineering Firm: F-1990



2711 North Haskell Ave., Suite 3300
Dallas, Texas 75204
Tel (214) 217 2200 Fax (214) 217 2201
www.freese.com
Texas Registered Engineering Firm: F-2144

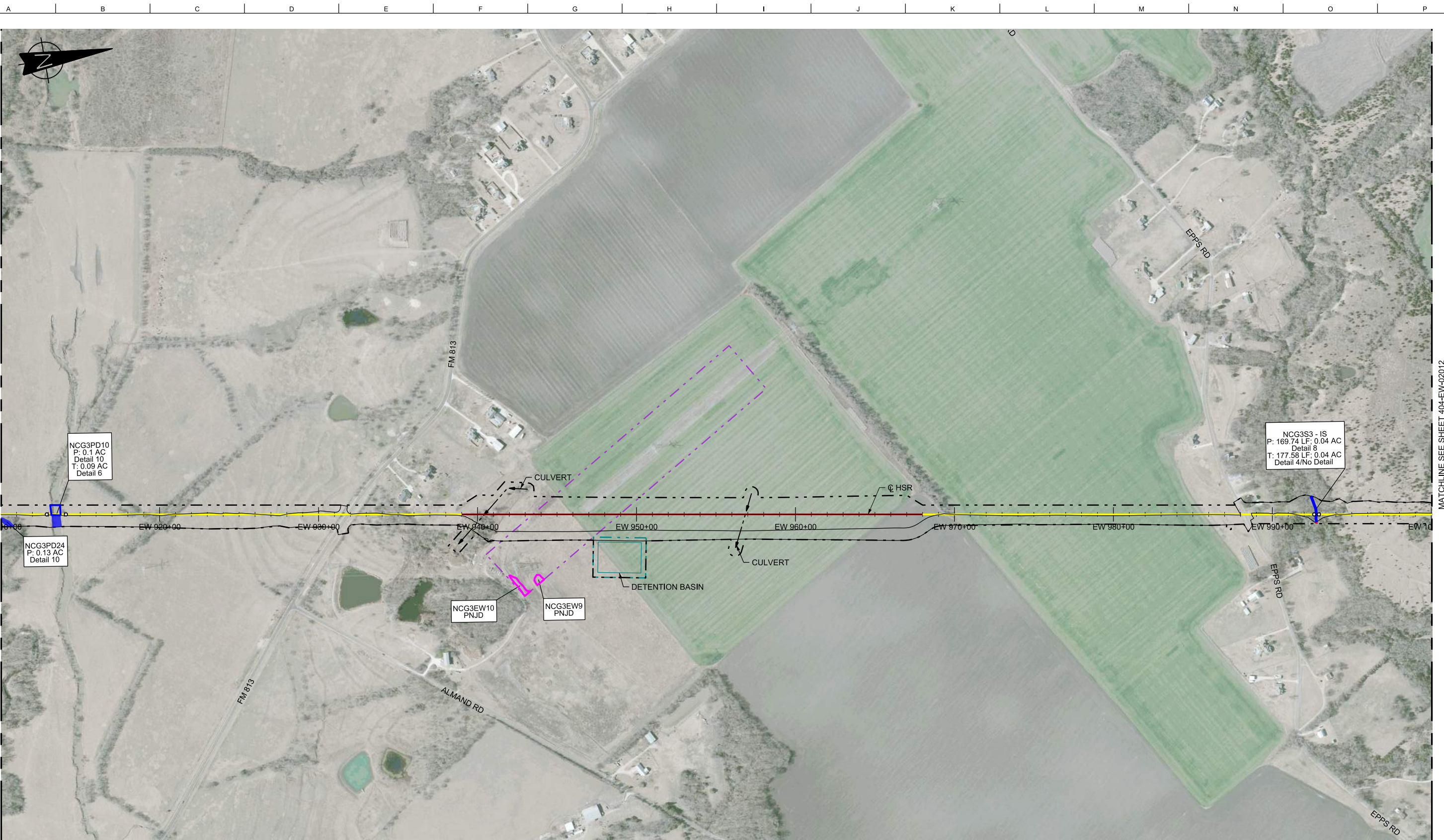


Client
1409 South Lamar Street, Suite 1022, Dallas, Texas 75215

Drawing Title
ELLIS WEST SEGMENT

**PLAN VIEW (FRA SEG. 2A)
STA EW 820+00 TO 910+00**

Scale AS SHOWN		
Drawing Status NOT FOR CONSTRUCTION		
Job No 234180	Drawing No 404-EW-02010	Rev 03



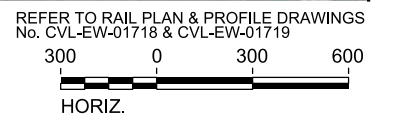
MATCHLINE SEE SHEET 404-EW-02010

MATCHLINE SEE SHEET 404-EW-02012

RAIL CONSTRUCTION TYPE	PERMANENT IMPACTS	TEMPORARY IMPACTS	OTHER
CUT	EMERGENT WETLAND	EMERGENT WETLAND	LIMITS OF DISTURBANCE (CONSTRUCTION FOOTPRINT)
EMBANKMENT	FORESTED WETLAND	POND	PERMANENT UTILITIES IMPACTS
RETAIN FILL	POND	STREAMS	TEMPORARY UTILITIES IMPACTS
RETAIN CUT	SCRUB/SHRUB WETLAND	OTHER IMPACTS	ROADWAY IMPACTS
VIADUCT	STREAMS	CONVERSION WETLAND	CULVERT FLOW
			PIER LOCATIONS

- NOTES:**
- POTENTIALLY NON-JURISDICTIONAL WATERBODIES DO NOT INCLUDE IMPACT QUANTITIES.
 - P = PERMANENT IMPACT
 - T = TEMPORARY IMPACT
 - ES = EPHEMERAL STREAM
 - IS = INTERMITTENT STREAM
 - PS = PERENNIAL STREAM
 - C = CONVERSION
 - TEMPORARY, PERMANENT AND CONVERSION IMPACTS ARE SUMMED UP IN ONE CALLOUT BOX FOR EACH FEATURE.
 - UTILITY AND TEMPORARY CONSTRUCTION IMPACTS DO NOT REFERENCE A DETAIL.
 - DRAWINGS ARE PRINTED AT HALF-SIZE (11X17).

PLAN



REV	DATE	BY	CHK	APP	DESCRIPTION

DESIGNED BY
R. ZARATE

DRAWN BY
J. HUFNAGEL

CHECKED BY
R. ALDREDGE

IN CHARGE
R. ZARATE

DATE
OCT. 2017

DALLAS TO HOUSTON
HIGH-SPEED RAIL
APPLICANT: TCRR
SWF-2011-00483

ARUP

Arup Texas, Inc.
10370 Richmond Ave., Suite 475
Houston, Texas 77042 USA
Tel (713) 783 2787 Fax (713) 343 1467
www.arup.com
Texas Registered Engineering Firm: F-1990

FREESSE & NICHOLS

2711 North Haskell Ave., Suite 3300
Dallas, Texas 75204
Tel (214) 217 2200 Fax (214) 217 2201
www.freesse.com
Texas Registered Engineering Firm: F-2144

Client

1409 South Lamar Street, Suite 1022, Dallas, Texas 75215

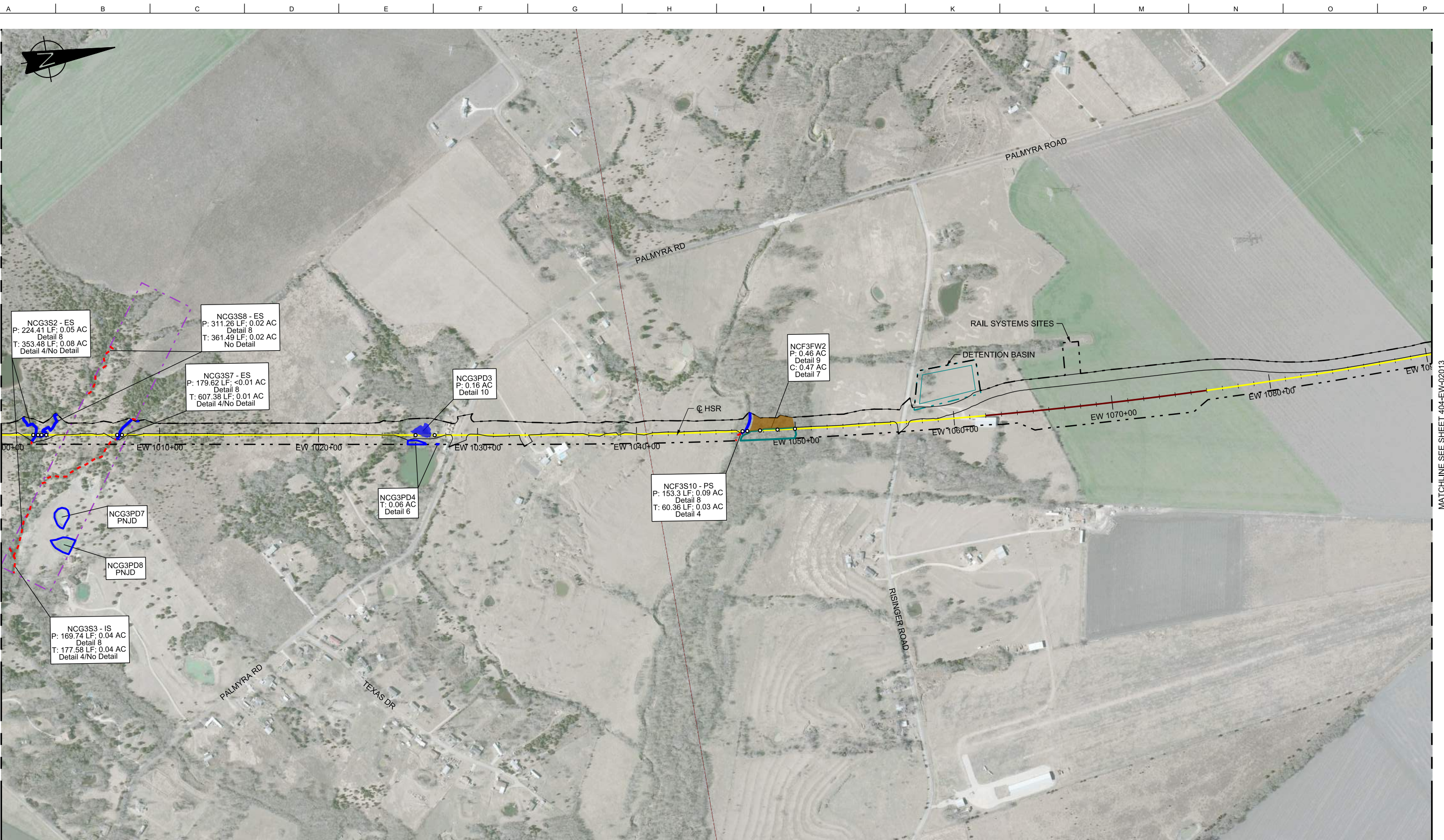
Drawing Title
ELLIS WEST SEGMENT

PLAN VIEW (FRA SEG. 2A)
STA EW 910+00 TO 1000+00

Scale
AS SHOWN

Drawing Status
NOT FOR CONSTRUCTION

Job No 234180	Drawing No 404-EW-02011	Rev 03
------------------	----------------------------	-----------

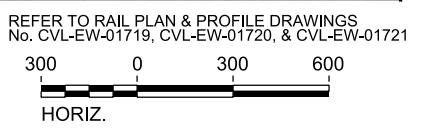


MATCHLINE SEE SHEET 404-EW-02011

MATCHLINE SEE SHEET 404-EW-02013

RAIL CONSTRUCTION TYPE	PERMANENT IMPACTS	TEMPORARY IMPACTS	OTHER
CUT	EMERGENT WETLAND	EMERGENT WETLAND	LIMITS OF DISTURBANCE (CONSTRUCTION FOOTPRINT)
EMBANKMENT	FORESTED WETLAND	POND	PERMANENT UTILITIES IMPACTS
RETAIN FILL	POND	STREAMS	TEMPORARY UTILITIES IMPACTS
RETAIN CUT	SCRUB/SHRUB WETLAND	OTHER IMPACTS	ROADWAY IMPACTS
VIADUCT	STREAMS	CONVERSION WETLAND	CULVERT FLOW
			PIER LOCATIONS

- NOTES:**
- POTENTIALLY NON-JURISDICTIONAL WATERBODIES DO NOT INCLUDE IMPACT QUANTITIES.
 - P = PERMANENT IMPACT
 - T = TEMPORARY IMPACT
 - ES = EPHEMERAL STREAM
 - IS = INTERMITTENT STREAM
 - PS = PERENNIAL STREAM
 - C = CONVERSION
 - TEMPORARY, PERMANENT AND CONVERSION IMPACTS ARE SUMMED UP IN ONE CALLOUT BOX FOR EACH FEATURE.
 - UTILITY AND TEMPORARY CONSTRUCTION IMPACTS DO NOT REFERENCE A DETAIL.
 - DRAWINGS ARE PRINTED AT HALF-SIZE (11X17).



REV	DATE	BY	CHK	APP	DESCRIPTION

DESIGNED BY
R. ZARATE

DRAWN BY
J. HUFNAGEL

CHECKED BY
R. ALDREDGE

IN CHARGE
R. ZARATE

DATE
OCT. 2017

DALLAS TO HOUSTON
HIGH-SPEED RAIL
APPLICANT: TCRR
SWF-2011-00483



Arup Texas, Inc.
10370 Richmond Ave., Suite 475
Houston, Texas 77042 USA
Tel (713) 783 2787 Fax (713) 343 1467
www.arup.com
Texas Registered Engineering Firm: F-1990



2711 North Haskell Ave., Suite 3300
Dallas, Texas 75204
Tel (214) 217 2200 Fax (214) 217 2201
www.freese.com
Texas Registered Engineering Firm: F-2144



Client
1409 South Lamar Street, Suite 1022, Dallas, Texas 75215

Drawing Title
ELLIS WEST SEGMENT

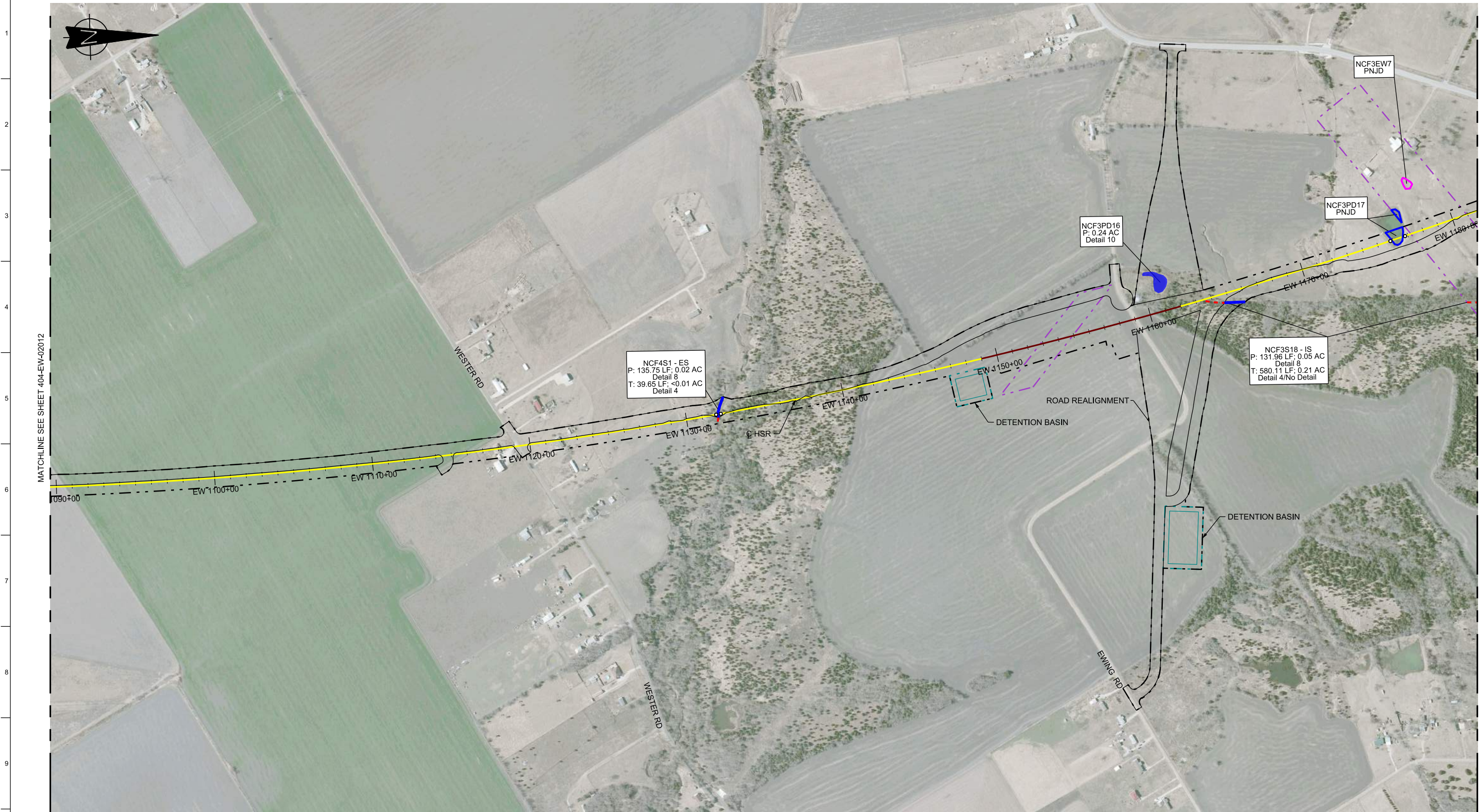
Scale
AS SHOWN

Drawing Status
NOT FOR CONSTRUCTION

Job No
234180

Drawing No
404-EW-02012

Rev
03



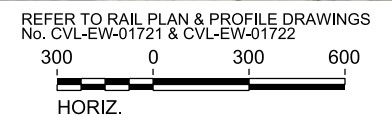
MATCHLINE SEE SHEET 404-EW-02012

MATCHLINE SEE SHEET 404-EW-02014

RAIL CONSTRUCTION TYPE	PERMANENT IMPACTS	TEMPORARY IMPACTS	OTHER
CUT	EMERGENT WETLAND	EMERGENT WETLAND	LIMITS OF DISTURBANCE (CONSTRUCTION FOOTPRINT)
EMBANKMENT	FORESTED WETLAND	POND	PERMANENT UTILITIES IMPACTS
RETAIN FILL	POND	STREAMS	TEMPORARY UTILITIES IMPACTS
RETAIN CUT	SCRUB/SHRUB WETLAND	OTHER IMPACTS	ROADWAY IMPACTS
VIADUCT	STREAMS	CONVERSION WETLAND	CULVERT FLOW
			PIER LOCATIONS

- NOTES:**
- POTENTIALLY NON-JURISDICTIONAL WATERBODIES DO NOT INCLUDE IMPACT QUANTITIES.
 - P = PERMANENT IMPACT
 - T = TEMPORARY IMPACT
 - ES = EPHEMERAL STREAM
 - IS = INTERMITTENT STREAM
 - PS = PERENNIAL STREAM
 - C = CONVERSION
 - TEMPORARY, PERMANENT AND CONVERSION IMPACTS ARE SUMMED UP IN ONE CALLOUT BOX FOR EACH FEATURE.
 - UTILITY AND TEMPORARY CONSTRUCTION IMPACTS DO NOT REFERENCE A DETAIL.
 - DRAWINGS ARE PRINTED AT HALF-SIZE (11X17).

PLAN



REV	DATE	BY	CHK	APP	DESCRIPTION

DESIGNED BY
R. ZARATE

DRAWN BY
J. HUFNAGEL

CHECKED BY
R. ALDREDGE

IN CHARGE
R. ZARATE

DATE
OCT. 2017

DALLAS TO HOUSTON
HIGH-SPEED RAIL
APPLICANT: TCRR
SWF-2011-00483

ARUP

Arup Texas, Inc.
10370 Richmond Ave., Suite 475
Houston, Texas 77042 USA
Tel (713) 783 2787 Fax (713) 343 1467
www.arup.com
Texas Registered Engineering Firm: F-1990

FRESE & NICHOLS

2711 North Haskell Ave., Suite 3300
Dallas, Texas 75204
Tel (214) 217 2200 Fax (214) 217 2201
www.freese.com
Texas Registered Engineering Firm: F-2144

Client

1409 South Lamar Street, Suite 1022, Dallas, Texas 75215

Drawing Title
ELLIS WEST SEGMENT

PLAN VIEW (FRA SEG. 2A)
STA EW 1090+00 TO 1180+00

Scale
AS SHOWN

Drawing Status
NOT FOR CONSTRUCTION

Job No 234180	Drawing No 404-EW-02013	Rev 03
------------------	----------------------------	-----------



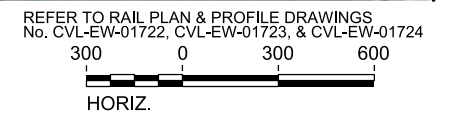
MATCHLINE SEE SHEET 404-EW-02013

MATCHLINE SEE SHEET 404-EW-02015

RAIL CONSTRUCTION TYPE	PERMANENT IMPACTS	TEMPORARY IMPACTS	OTHER
CUT	EMERGENT WETLAND	EMERGENT WETLAND	LIMITS OF DISTURBANCE (CONSTRUCTION FOOTPRINT)
EMBANKMENT	FORESTED WETLAND	POND	PERMANENT UTILITIES IMPACTS
RETAIN FILL	POND	STREAMS	TEMPORARY UTILITIES IMPACTS
RETAIN CUT	SCRUB/SHRUB WETLAND	OTHER IMPACTS	ROADWAY IMPACTS
VIADUCT	STREAMS	CONVERSION WETLAND	CULVERT FLOW
			PIER LOCATIONS

- NOTES:**
- POTENTIALLY NON-JURISDICTIONAL WATERBODIES DO NOT INCLUDE IMPACT QUANTITIES.
 - P = PERMANENT IMPACT
 - T = TEMPORARY IMPACT
 - ES = EPHEMERAL STREAM
 - IS = INTERMITTENT STREAM
 - PS = PERENNIAL STREAM
 - C = CONVERSION
 - TEMPORARY, PERMANENT AND CONVERSION IMPACTS ARE SUMMED UP IN ONE CALLOUT BOX FOR EACH FEATURE.
 - UTILITY AND TEMPORARY CONSTRUCTION IMPACTS DO NOT REFERENCE A DETAIL.
 - DRAWINGS ARE PRINTED AT HALF-SIZE (11X17).

PLAN



REV	DATE	BY	CHK	APP	DESCRIPTION

DESIGNED BY
R. ZARATE
DRAWN BY
J. HUFNAGEL
CHECKED BY
R. ALDREDGE
IN CHARGE
R. ZARATE
DATE
OCT. 2017

DALLAS TO HOUSTON
HIGH-SPEED RAIL
APPLICANT: TCRR
SWF-2011-00483



Arup Texas, Inc.
10370 Richmond Ave., Suite 475
Houston, Texas 77042 USA
Tel (713) 783 2787 Fax (713) 343 1467
www.arup.com
Texas Registered Engineering Firm: F-1990



2711 North Haskell Ave., Suite 3300
Dallas, Texas 75204
Tel (214) 217 2200 Fax (214) 217 2201
www.freese.com
Texas Registered Engineering Firm: F-2144



Client
1409 South Lamar Street, Suite 1022, Dallas, Texas 75215

Drawing Title
ELLIS WEST SEGMENT
PLAN VIEW (FRA SEG. 2A)
STA EW 1180+00 TO 1242+50

Scale AS SHOWN		
Drawing Status NOT FOR CONSTRUCTION		
Job No 234180	Drawing No 404-EW-02014	Rev 03