

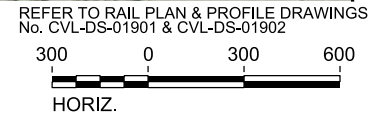
MATCHLINE SEE SHEET 404-DS-02002

PLOT BY: NYPWICS01S PLOT TIME: 10/13/2017 2:26 PM

RAIL CONSTRUCTION TYPE	PERMANENT IMPACTS	TEMPORARY IMPACTS	OTHER
CUT	EMERGENT WETLAND	EMERGENT WETLAND	LIMITS OF DISTURBANCE (CONSTRUCTION FOOTPRINT)
EMBANKMENT	FORESTED WETLAND	POND	PERMANENT UTILITIES IMPACTS
RETAIN FILL	POND	STREAMS	TEMPORARY UTILITIES IMPACTS
RETAIN CUT	SCRUB/SHRUB WETLAND	OTHER IMPACTS	ROADWAY IMPACTS
VIADUCT	STREAMS	CULVERT FLOW	PIER LOCATIONS
	STREAMS	CONVERSION WETLAND	

NOTES:  
 1. POTENTIALLY NON-JURISDICTIONAL WATERBODIES DO NOT INCLUDE IMPACT QUANTITIES.  
 2. P = PERMANENT IMPACT  
 3. T = TEMPORARY IMPACT  
 4. ES = EPHEMERAL STREAM  
 5. IS = INTERMITTENT STREAM  
 6. PS = PERENNIAL STREAM  
 7. C = CONVERSION  
 8. TEMPORARY, PERMANENT AND CONVERSION IMPACTS ARE SUMMED UP IN ONE CALLOUT BOX FOR EACH FEATURE.  
 9. UTILITY AND TEMPORARY CONSTRUCTION IMPACTS DO NOT REFERENCE A DETAIL.  
 10. DRAWINGS ARE PRINTED AT HALF-SIZE (11X17).

**PLAN**



REV	DATE	BY	CHK	APP	DESCRIPTION

DESIGNED BY  
**R. ZARATE**  
 DRAWN BY  
**J. HUFNAGEL**  
 CHECKED BY  
**R. ALDREDGE**  
 IN CHARGE  
**R. ZARATE**  
 DATE  
**OCT. 2017**

DALLAS TO HOUSTON  
 HIGH-SPEED RAIL  
 APPLICANT: TCRR  
 SWF-2011-00483

**ARUP**  
 Arup Texas, Inc.  
 10370 Richmond Ave., Suite 475  
 Houston, Texas 77042 USA  
 Tel (713) 783 2787 Fax (713) 343 1467  
 www.arup.com  
 Texas Registered Engineering Firm: F-1990

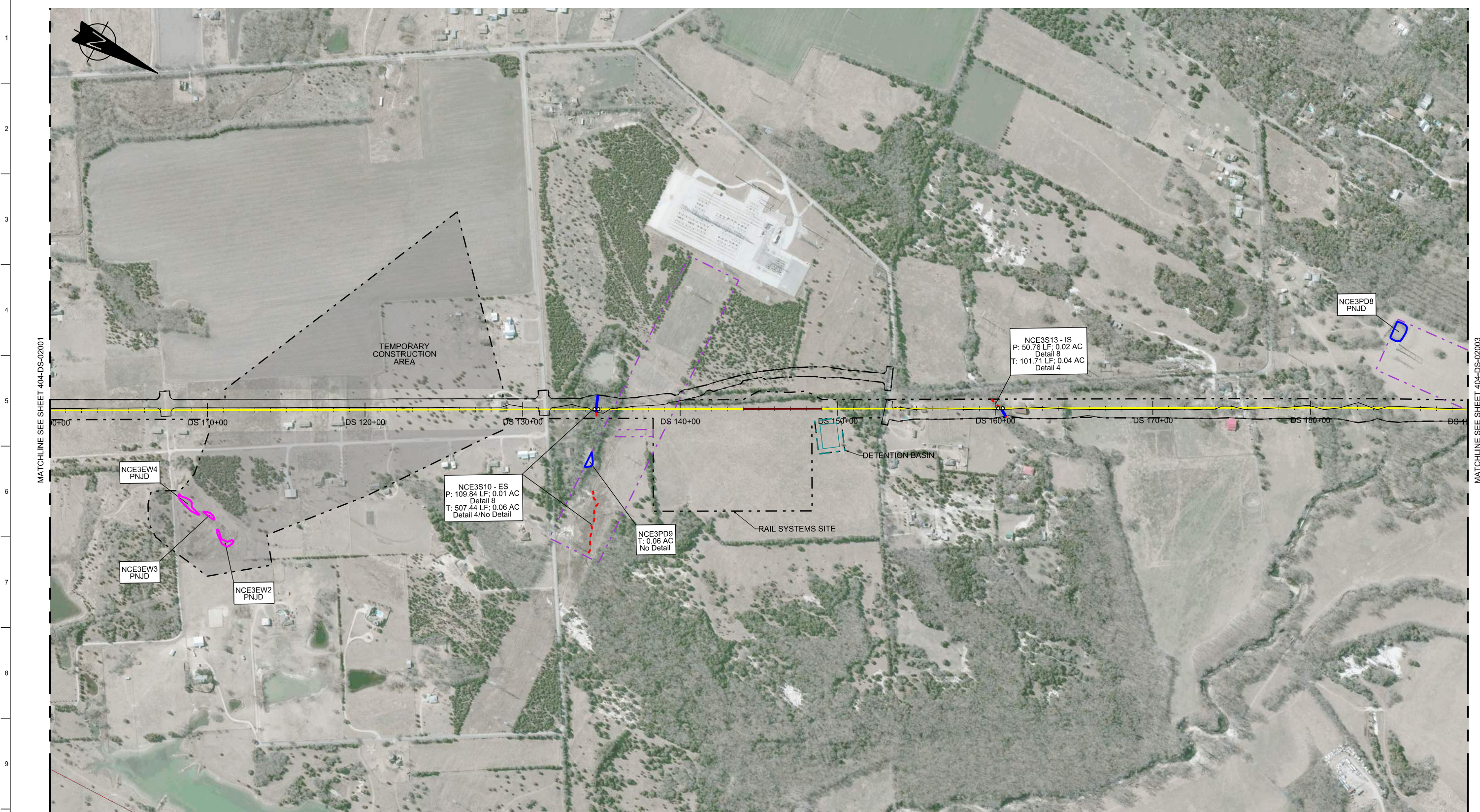
**FREESSE & NICHOLS**  
 2711 North Haskell Ave., Suite 3300  
 Dallas, Texas 75204  
 Tel (214) 217 2200 Fax (214) 217 2201  
 www.freesse.com  
 Texas Registered Engineering Firm: F-2144

Client  
  
**TEXAS CENTRAL**  
 1409 South Lamar Street, Suite 1022, Dallas, Texas 75215

Drawing Title  
**DALLAS SEGMENT**  
**PLAN VIEW (FRA SEG. 1)**  
**STA DS 10+00 TO 100+00**

Scale AS SHOWN		
Drawing Status <b>NOT FOR CONSTRUCTION</b>		
Job No 234180	Drawing No 404-DS-02001	Rev 03





RAIL CONSTRUCTION TYPE	PERMANENT IMPACTS	TEMPORARY IMPACTS	OTHER
CUT	EMERGENT WETLAND	EMERGENT WETLAND	LIMITS OF DISTURBANCE (CONSTRUCTION FOOTPRINT)
EMBANKMENT	FORESTED WETLAND	POND	PERMANENT UTILITIES IMPACTS
RETAIN FILL	POND	STREAMS	TEMPORARY UTILITIES IMPACTS
RETAIN CUT	SCRUB/SHRUB WETLAND	OTHER IMPACTS	ROADWAY IMPACTS
VIADUCT	STREAMS	CONVERSION WETLAND	CULVERT FLOW
			PIER LOCATIONS

- NOTES:
- POTENTIALLY NON-JURISDICTIONAL WATERBODIES DO NOT INCLUDE IMPACT QUANTITIES.
  - P = PERMANENT IMPACT
  - T = TEMPORARY IMPACT
  - ES = EPHEMERAL STREAM
  - IS = INTERMITTENT STREAM
  - PS = PERENNIAL STREAM
  - C = CONVERSION
  - TEMPORARY, PERMANENT AND CONVERSION IMPACTS ARE SUMMED UP IN ONE CALLOUT BOX FOR EACH FEATURE.
  - UTILITY AND TEMPORARY CONSTRUCTION IMPACTS DO NOT REFERENCE A DETAIL.
  - DRAWINGS ARE PRINTED AT HALF-SIZE (11X17).

REFER TO RAIL PLAN & PROFILE DRAWINGS  
No. CVL-DS-01902, CVL-DS-01903 & CVL-DS-01904

300 0 300 600  
HORIZ.

REV	DATE	BY	CHK	APP	DESCRIPTION

DESIGNED BY  
**R. ZARATE**

DRAWN BY  
**J. HUFNAGEL**

CHECKED BY  
**R. ALDREDGE**

IN CHARGE  
**R. ZARATE**

DATE  
**OCT. 2017**

DALLAS TO HOUSTON  
HIGH-SPEED RAIL  
APPLICANT: TCRR  
SWF-2011-00483

**ARUP**

Arup Texas, Inc.  
10370 Richmond Ave., Suite 475  
Houston, Texas 77042 USA  
Tel (713) 783 2787 Fax (713) 343 1467  
www.arup.com  
Texas Registered Engineering Firm: F-1990

**FREES & NICHOLS**

2711 North Haskell Ave., Suite 3300  
Dallas, Texas 75204  
Tel (214) 217 2200 Fax (214) 217 2201  
www.frees.com  
Texas Registered Engineering Firm: F-2144

Client

**TEXAS CENTRAL**

1409 South Lamar Street, Suite 1022, Dallas, Texas 75215

Drawing Title

**DALLAS SEGMENT**

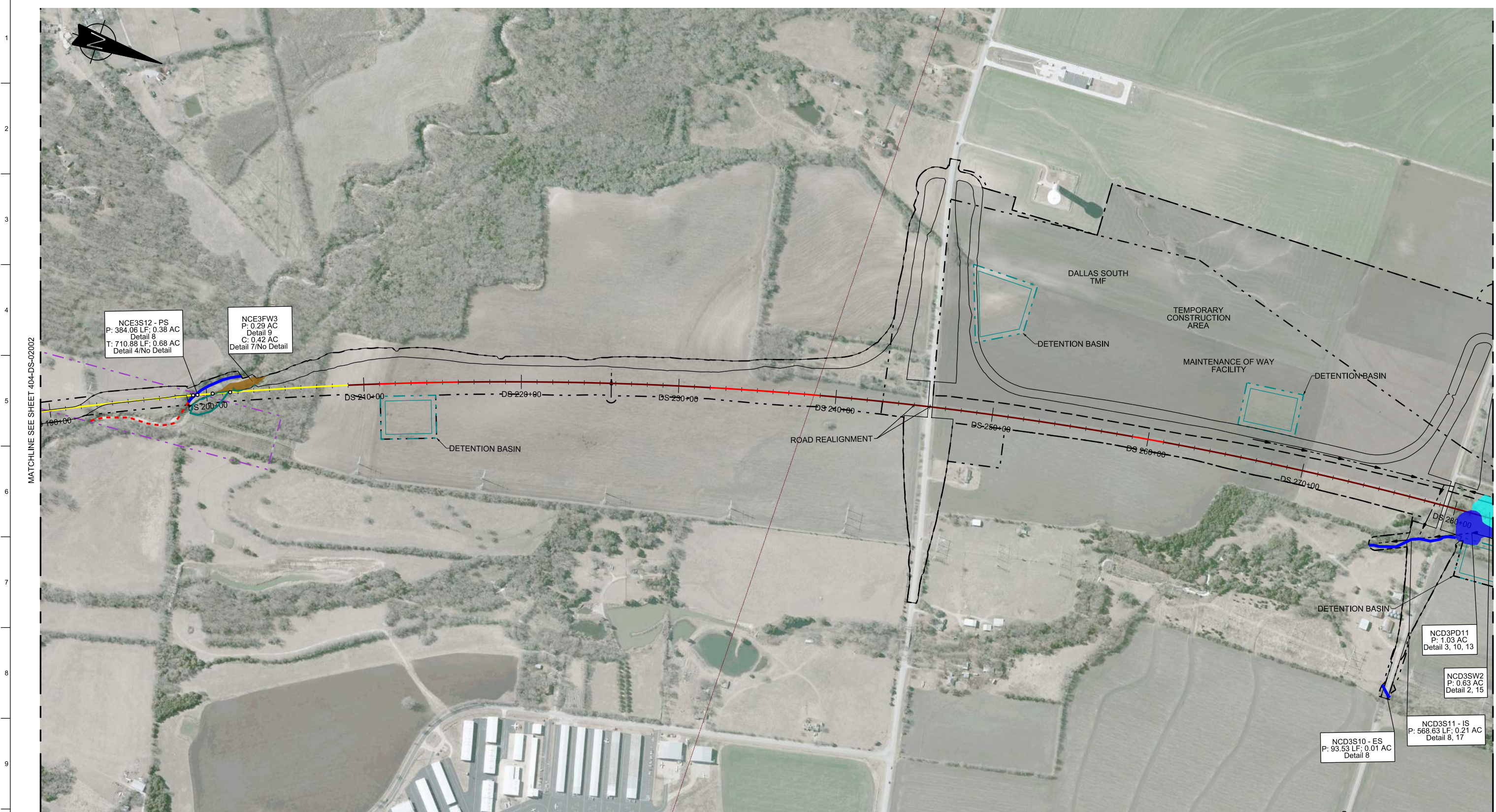
**PLAN VIEW (FRA SEG. 1)**  
**STA DS 100+00 TO 190+00**

Scale  
AS SHOWN

Drawing Status  
**NOT FOR CONSTRUCTION**

Job No	Drawing No	Rev
234180	404-DS-02002	03





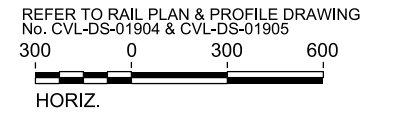
MATCHLINE SEE SHEET 404-DS-02002

MATCHLINE SEE SHEET 404-DS-02004

RAIL CONSTRUCTION TYPE	PERMANENT IMPACTS	TEMPORARY IMPACTS	OTHER
CUT	EMERGENT WETLAND	EMERGENT WETLAND	LIMITS OF DISTURBANCE (CONSTRUCTION FOOTPRINT)
EMBANKMENT	FORESTED WETLAND	POND	PERMANENT UTILITIES IMPACTS
RETAIN FILL	POND	STREAMS	TEMPORARY UTILITIES IMPACTS
RETAIN CUT	SCRUB/SHRUB WETLAND	OTHER IMPACTS	ROADWAY IMPACTS
VIADUCT	STREAMS	CONVERSION WETLAND	CULVERT FLOW
			PIER LOCATIONS

- NOTES:
- POTENTIALLY NON-JURISDICTIONAL WATERBODIES DO NOT INCLUDE IMPACT QUANTITIES.
  - P = PERMANENT IMPACT
  - T = TEMPORARY IMPACT
  - ES = EPHEMERAL STREAM
  - IS = INTERMITTENT STREAM
  - PS = PERENNIAL STREAM
  - C = CONVERSION
  - TEMPORARY, PERMANENT AND CONVERSION IMPACTS ARE SUMMED UP IN ONE CALLOUT BOX FOR EACH FEATURE.
  - UTILITY AND TEMPORARY CONSTRUCTION IMPACTS DO NOT REFERENCE A DETAIL.
  - DRAWINGS ARE PRINTED AT HALF-SIZE (11X17).

### PLAN



REV	DATE	BY	CHK	APP	DESCRIPTION

DESIGNED BY  
**R. ZARATE**

DRAWN BY  
**J. HUFNAGEL**

CHECKED BY  
**R. ALDREDGE**

IN CHARGE  
**R. ZARATE**

DATE  
**OCT. 2017**

DALLAS TO HOUSTON  
HIGH-SPEED RAIL  
APPLICANT: TCR  
SWF-2011-00483



Arup Texas, Inc.  
10370 Richmond Ave., Suite 475  
Houston, Texas 77042 USA  
Tel (713) 783 2787 Fax (713) 343 1467  
www.arup.com  
Texas Registered Engineering Firm: F-1990



2711 North Haskell Ave., Suite 3300  
Dallas, Texas 75204  
Tel (214) 217 2200 Fax (214) 217 2201  
www.freese.com  
Texas Registered Engineering Firm: F-2144



Client  
1409 South Lamar Street, Suite 1022, Dallas, Texas 75215

Drawing Title  
**DALLAS SEGMENT**  
**PLAN VIEW (FRA SEG. 1)**  
**STA DS 190+00 TO 280+00**

Scale AS SHOWN		
Drawing Status <b>NOT FOR CONSTRUCTION</b>		
Job No 234180	Drawing No 404-DS-02003	Rev 03





RAIL CONSTRUCTION TYPE	PERMANENT IMPACTS	TEMPORARY IMPACTS	OTHER
CUT	EMERGENT WETLAND	EMERGENT WETLAND	LIMITS OF DISTURBANCE (CONSTRUCTION FOOTPRINT)
EMBANKMENT	FORESTED WETLAND	POND	PERMANENT UTILITIES IMPACTS
RETAIN FILL	POND	STREAMS	TEMPORARY UTILITIES IMPACTS
RETAIN CUT	SCRUB/SHRUB WETLAND	OTHER IMPACTS	ROADWAY IMPACTS
VIADUCT	STREAMS	CONVERSION WETLAND	CULVERT FLOW
			PIER LOCATIONS

- NOTES:
- POTENTIALLY NON-JURISDICTIONAL WATERBODIES DO NOT INCLUDE IMPACT QUANTITIES.
  - P = PERMANENT IMPACT
  - T = TEMPORARY IMPACT
  - ES = EPHEMERAL STREAM
  - IS = INTERMITTENT STREAM
  - PS = PERENNIAL STREAM
  - C = CONVERSION
  - TEMPORARY, PERMANENT AND CONVERSION IMPACTS ARE SUMMED UP IN ONE CALLOUT BOX FOR EACH FEATURE.
  - UTILITY AND TEMPORARY CONSTRUCTION IMPACTS DO NOT REFERENCE A DETAIL.
  - DRAWINGS ARE PRINTED AT HALF-SIZE (11X17).

### PLAN

REFER TO RAIL PLAN & PROFILE DRAWINGS  
No. CVL-DS-01905, CVL-DS-01906 & CVL-DS-01907

300 0 300 600  
HORIZ.

REV	DATE	BY	CHK	APP	DESCRIPTION

DESIGNED BY  
**R. ZARATE**

DRAWN BY  
**J. HUFNAGEL**

CHECKED BY  
**R. ALDREDGE**

IN CHARGE  
**R. ZARATE**

DATE  
**OCT. 2017**

DALLAS TO HOUSTON  
HIGH-SPEED RAIL  
APPLICANT: TCRR  
SWF-2011-00483



Arup Texas, Inc.  
10370 Richmond Ave., Suite 475  
Houston, Texas 77042 USA  
Tel (713) 783 2787 Fax (713) 343 1467  
www.arup.com  
Texas Registered Engineering Firm: F-1990



2711 North Haskell Ave., Suite 3300  
Dallas, Texas 75204  
Tel (214) 217 2200 Fax (214) 217 2201  
www.freese.com  
Texas Registered Engineering Firm: F-2144



Client  
1409 South Lamar Street, Suite 1022, Dallas, Texas 75215

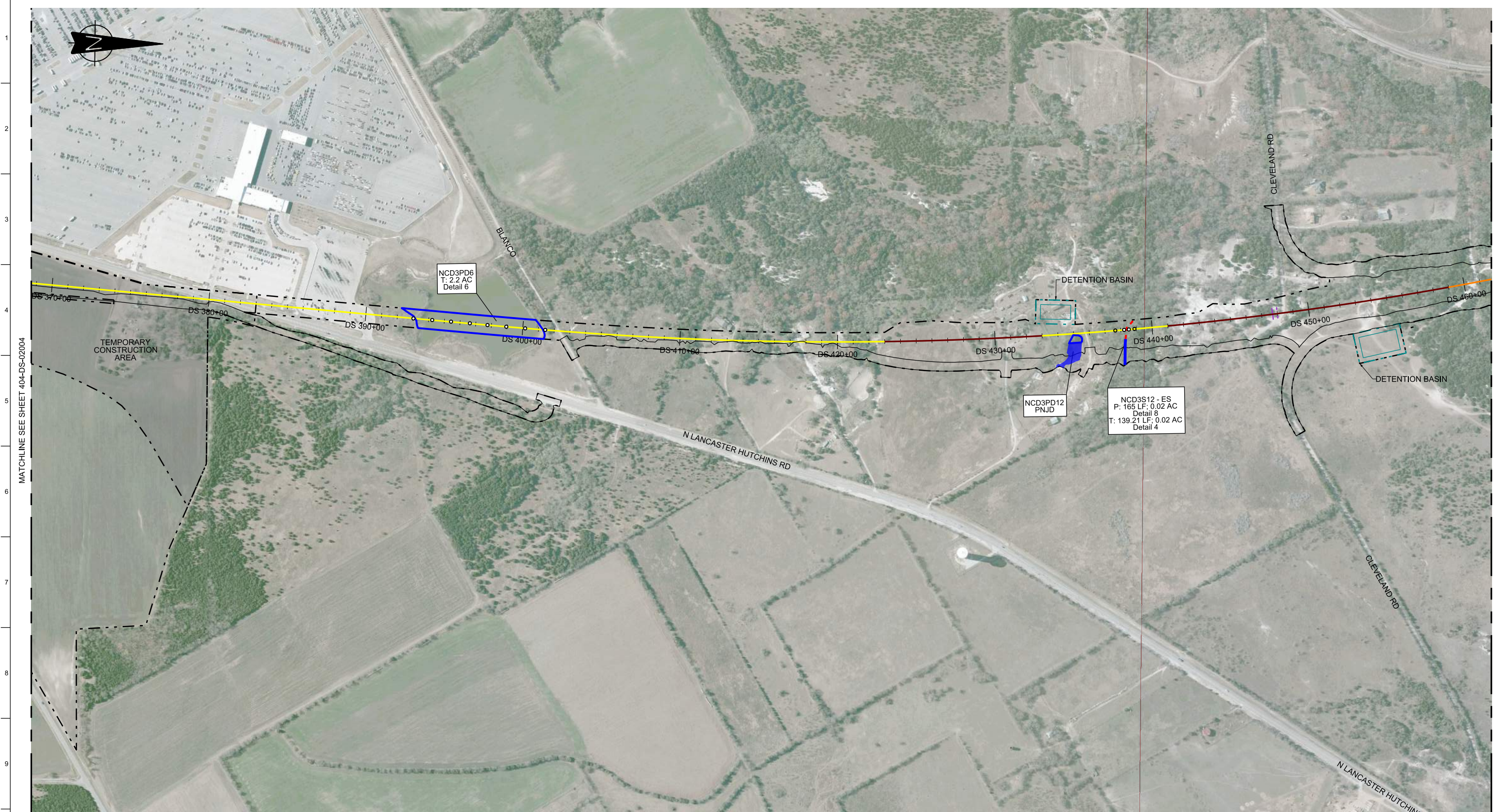
Drawing Title  
**DALLAS SEGMENT**  
**PLAN VIEW (FRA SEG. 1)**  
**STA DS 280+00 TO 370+00**

Scale  
AS SHOWN

Drawing Status  
**NOT FOR CONSTRUCTION**

Job No	Drawing No	Rev
234180	404-DS-02004	03

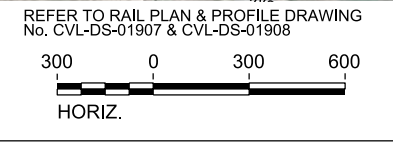




RAIL CONSTRUCTION TYPE	PERMANENT IMPACTS	TEMPORARY IMPACTS	OTHER
CUT	EMERGENT WETLAND	EMERGENT WETLAND	LIMITS OF DISTURBANCE (CONSTRUCTION FOOTPRINT)
EMBANKMENT	FORESTED WETLAND	POND	PERMANENT UTILITIES IMPACTS
RETAIN FILL	POND	STREAMS	TEMPORARY UTILITIES IMPACTS
RETAIN CUT	SCRUB/SHRUB WETLAND	OTHER IMPACTS	ROADWAY IMPACTS
VIADUCT	STREAMS	CONVERSION WETLAND	CULVERT FLOW
			PIER LOCATIONS

- NOTES:
- POTENTIALLY NON-JURISDICTIONAL WATERBODIES DO NOT INCLUDE IMPACT QUANTITIES.
  - P = PERMANENT IMPACT
  - T = TEMPORARY IMPACT
  - ES = EPHEMERAL STREAM
  - IS = INTERMITTENT STREAM
  - PS = PERENNIAL STREAM
  - C = CONVERSION
  - TEMPORARY, PERMANENT AND CONVERSION IMPACTS ARE SUMMED UP IN ONE CALLOUT BOX FOR EACH FEATURE.
  - UTILITY AND TEMPORARY CONSTRUCTION IMPACTS DO NOT REFERENCE A DETAIL.
  - DRAWINGS ARE PRINTED AT HALF-SIZE (11X17).

PLAN



REV	DATE	BY	CHK	APP	DESCRIPTION

DESIGNED BY  
**R. ZARATE**

DRAWN BY  
**J. HUFNAGEL**

CHECKED BY  
**R. ALDREDGE**

IN CHARGE  
**R. ZARATE**

DATE  
**OCT. 2017**

DALLAS TO HOUSTON  
HIGH-SPEED RAIL  
APPLICANT: TCRR  
SWF-2011-00483

**ARUP**

Arup Texas, Inc.  
10370 Richmond Ave., Suite 475  
Houston, Texas 77042 USA  
Tel (713) 783 2787 Fax (713) 343 1467  
www.arup.com  
Texas Registered Engineering Firm: F-1990

**FREESSE & NICHOLS**

2711 North Haskell Ave., Suite 3300  
Dallas, Texas 75204  
Tel (214) 217 2200 Fax (214) 217 2201  
www.freesse.com  
Texas Registered Engineering Firm: F-2144

Client

1409 South Lamar Street, Suite 1022, Dallas, Texas 75215

Drawing Title  
**DALLAS SEGMENT**

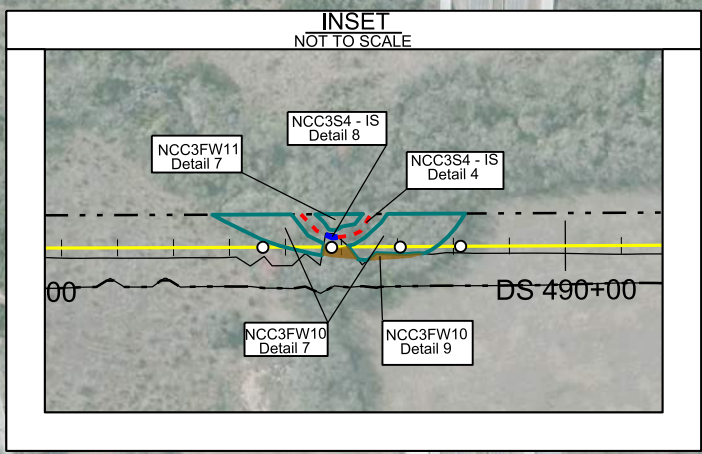
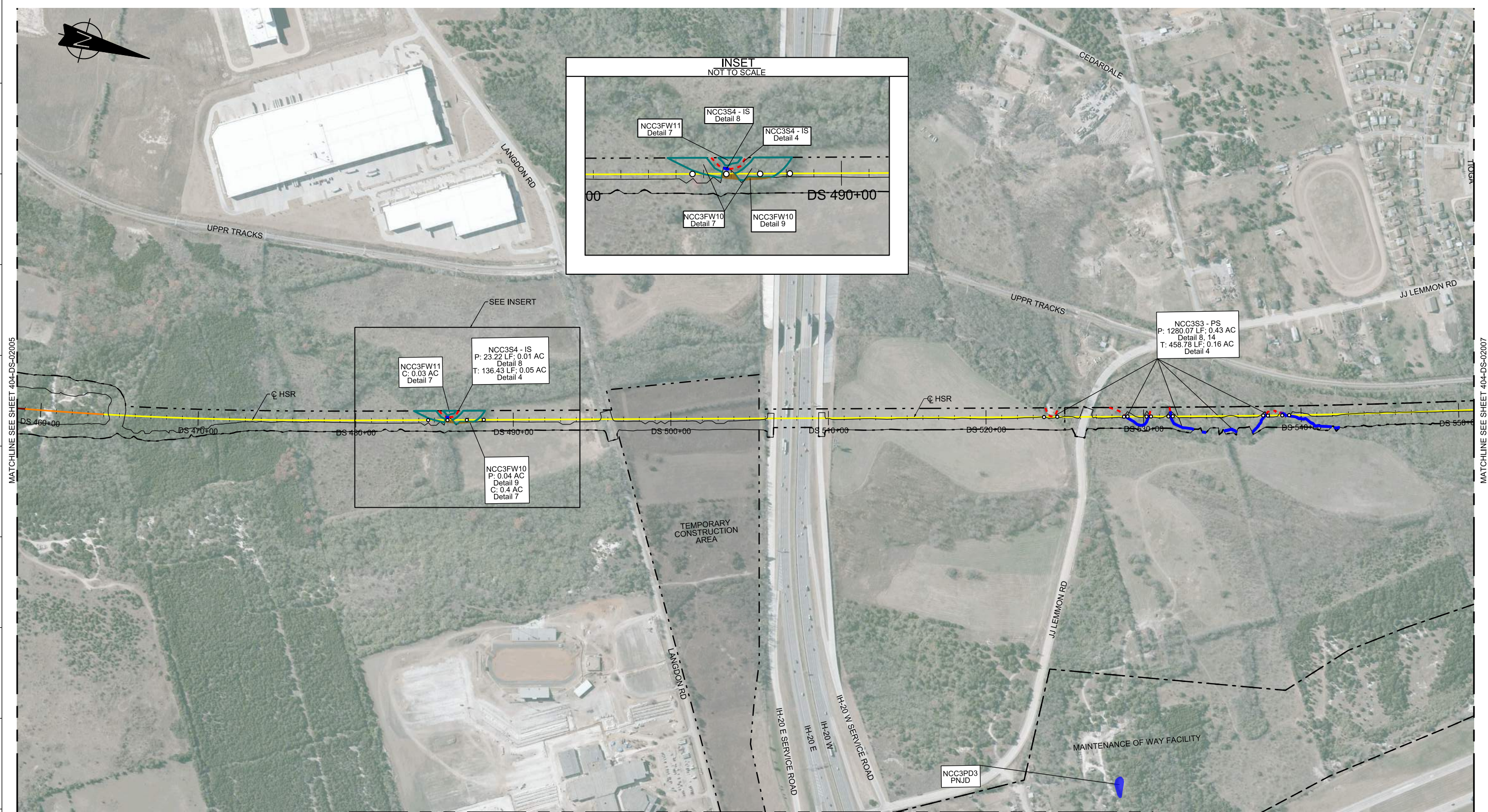
**PLAN VIEW (FRA SEG. 1)**  
**STA DS 370+00 TO 460+00**

Scale  
AS SHOWN

Drawing Status  
**NOT FOR CONSTRUCTION**

Job No 234180	Drawing No 404-DS-02005	Rev 03
------------------	----------------------------	-----------





RAIL CONSTRUCTION TYPE	PERMANENT IMPACTS	TEMPORARY IMPACTS	OTHER
CUT	EMERGENT WETLAND	EMERGENT WETLAND	LIMITS OF DISTURBANCE (CONSTRUCTION FOOTPRINT)
EMBANKMENT	FORESTED WETLAND	POND	PERMANENT UTILITIES IMPACTS
RETAIN FILL	POND	STREAMS	TEMPORARY UTILITIES IMPACTS
RETAIN CUT	SCRUB/SHRUB WETLAND	OTHER IMPACTS	ROADWAY IMPACTS
VIADUCT	STREAMS	CONVERSION WETLAND	CULVERT FLOW
			PIER LOCATIONS

- NOTES:
- POTENTIALLY NON-JURISDICTIONAL WATERBODIES DO NOT INCLUDE IMPACT QUANTITIES.
  - P = PERMANENT IMPACT
  - T = TEMPORARY IMPACT
  - ES = EPHEMERAL STREAM
  - IS = INTERMITTENT STREAM
  - PS = PERENNIAL STREAM
  - C = CONVERSION
  - TEMPORARY, PERMANENT AND CONVERSION IMPACTS ARE SUMMED UP IN ONE CALLOUT BOX FOR EACH FEATURE.
  - UTILITY AND TEMPORARY CONSTRUCTION IMPACTS DO NOT REFERENCE A DETAIL.
  - DRAWINGS ARE PRINTED AT HALF-SIZE (11X17).

REFER TO RAIL PLAN & PROFILE DRAWINGS No. CVL-DS-01904, CVL-DS-01910 & CVL-DS-01911

300 0 300 600  
HORIZ.

REV	DATE	BY	CHK	APP	DESCRIPTION

DESIGNED BY  
**R. ZARATE**

DRAWN BY  
**J. HUFNAGEL**

CHECKED BY  
**R. ALDREDGE**

IN CHARGE  
**R. ZARATE**

DATE  
**OCT. 2017**

DALLAS TO HOUSTON  
HIGH-SPEED RAIL  
APPLICANT: TCRR  
SWF-2011-00483



Arup Texas, Inc.  
10370 Richmond Ave., Suite 475  
Houston, Texas 77042 USA  
Tel (713) 783 2787 Fax (713) 343 1467  
www.arup.com  
Texas Registered Engineering Firm: F-1990



2711 North Haskell Ave., Suite 3300  
Dallas, Texas 75204  
Tel (214) 217 2200 Fax (214) 217 2201  
www.freese.com  
Texas Registered Engineering Firm: F-2144

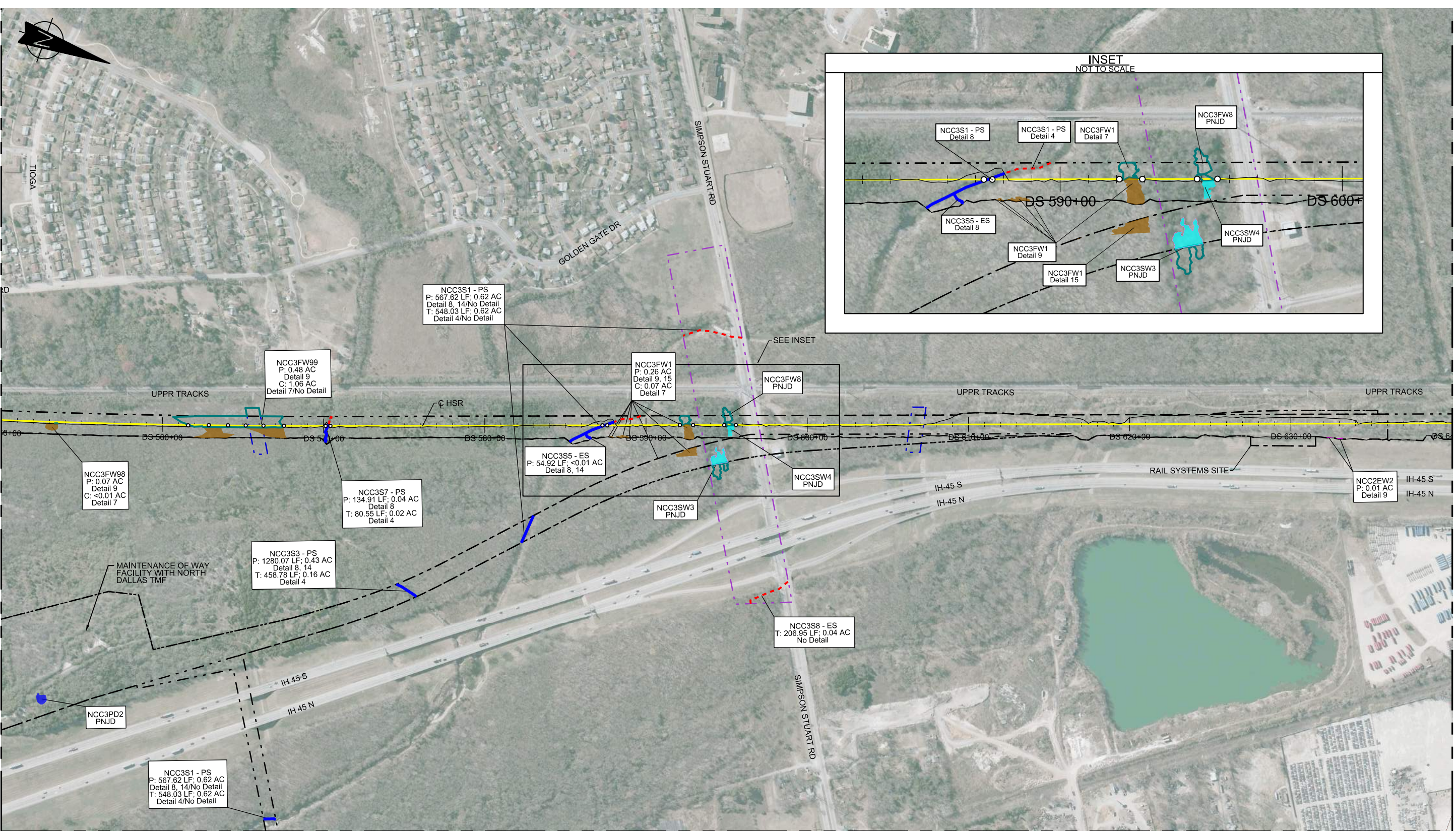


Client  
1409 South Lamar Street, Suite 1022, Dallas, Texas 75215

Drawing Title  
**DALLAS SEGMENT**  
**PLAN VIEW (FRA SEG. 1)**  
**STA DS 460+00 TO 550+00**

Scale AS SHOWN	Drawing Status <b>NOT FOR CONSTRUCTION</b>	
Job No 234180	Drawing No 404-DS-02006	Rev 03





MATCHLINE SEE SHEET 404-DS-02006

MATCHLINE SEE SHEET 404-DS-02008

RAIL CONSTRUCTION TYPE	PERMANENT IMPACTS	TEMPORARY IMPACTS	OTHER
CUT	EMERGENT WETLAND	EMERGENT WETLAND	LIMITS OF DISTURBANCE (CONSTRUCTION FOOTPRINT)
EMBANKMENT	FORESTED WETLAND	POND	PERMANENT UTILITIES IMPACTS
RETAIN FILL	POND	STREAMS	TEMPORARY UTILITIES IMPACTS
RETAIN CUT	SCRUB/SHRUB WETLAND	OTHER IMPACTS	ROADWAY IMPACTS
VIADUCT	STREAMS	CONVERSION WETLAND	CULVERT FLOW
			PIER LOCATIONS

- NOTES:
- POTENTIALLY NON-JURISDICTIONAL WATERBODIES DO NOT INCLUDE IMPACT QUANTITIES.
  - P = PERMANENT IMPACT
  - T = TEMPORARY IMPACT
  - ES = EPHEMERAL STREAM
  - IS = INTERMITTENT STREAM
  - PS = PERENNIAL STREAM
  - C = CONVERSION
  - TEMPORARY, PERMANENT AND CONVERSION IMPACTS ARE SUMMED UP IN ONE CALLOUT BOX FOR EACH FEATURE.
  - UTILITY AND TEMPORARY CONSTRUCTION IMPACTS DO NOT REFERENCE A DETAIL.
  - DRAWINGS ARE PRINTED AT HALF-SIZE (11X17).

### PLAN

REFER TO RAIL PLAN & PROFILE DRAWINGS  
No. CVL-DS-01912, CVL-DS-01913,  
CVL-DS-01914 & CVL-DS-01915

300 0 300 600  
HORIZ.

REV	DATE	BY	CHK	APP	DESCRIPTION

DESIGNED BY  
**R. ZARATE**

DRAWN BY  
**J. HUFNAGEL**

CHECKED BY  
**R. ALDREDGE**

IN CHARGE  
**R. ZARATE**

DATE  
**OCT. 2017**

DALLAS TO HOUSTON  
HIGH-SPEED RAIL  
APPLICANT: TCRR  
SWF-2011-00483

**ARUP**

Arup Texas, Inc.  
10370 Richmond Ave., Suite 475  
Houston, Texas 77042 USA  
Tel (713) 783 2787 Fax (713) 343 1467  
www.arup.com  
Texas Registered Engineering Firm: F-1990

**FRESE & NICHOLS**

2711 North Haskell Ave., Suite 3300  
Dallas, Texas 75204  
Tel (214) 217 2200 Fax (214) 217 2201  
www.freese.com  
Texas Registered Engineering Firm: F-2144

Client

1409 South Lamar Street, Suite 1022, Dallas, Texas 75215

Drawing Title

**DALLAS SEGMENT**

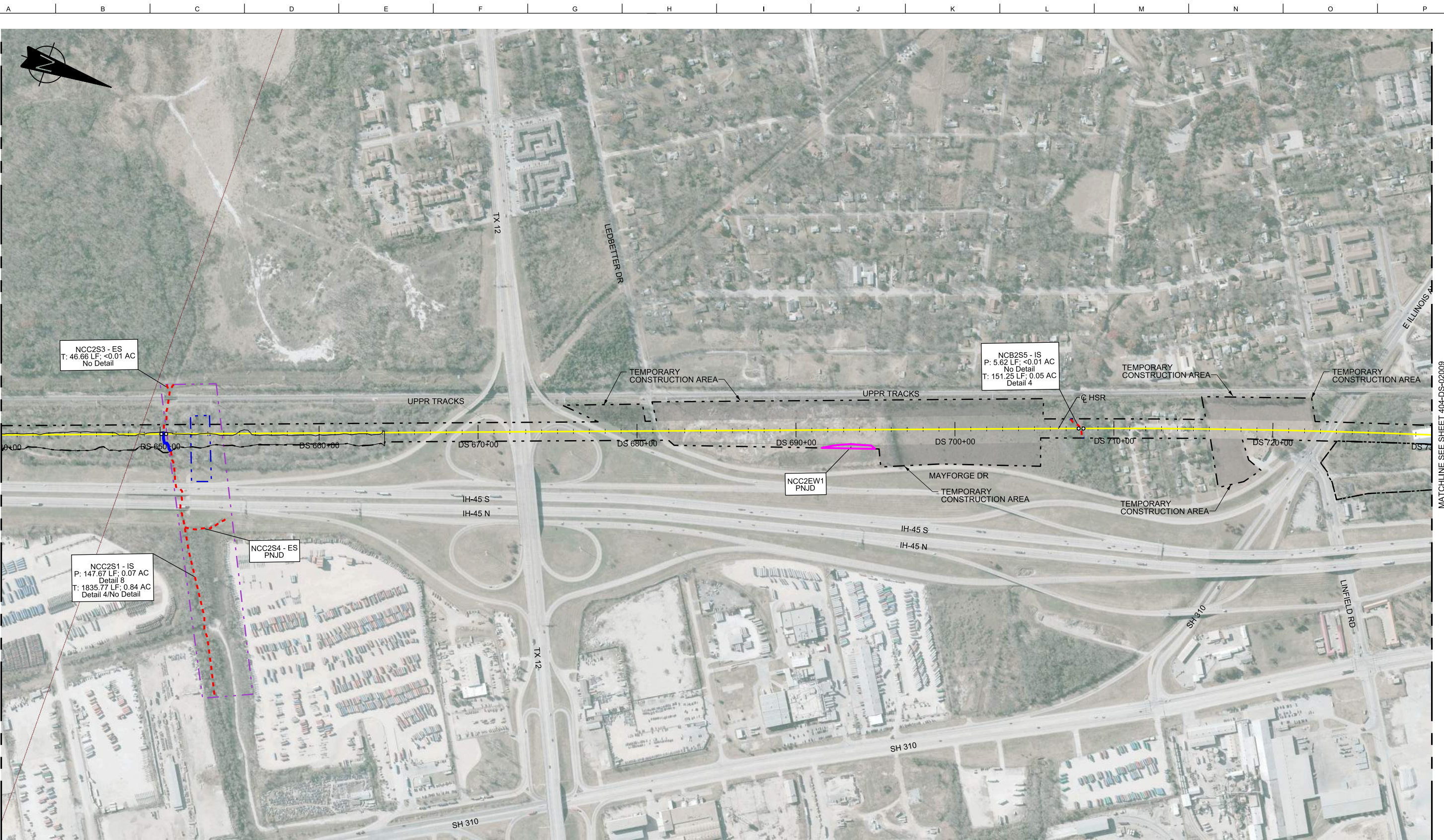
**PLAN VIEW (FRA SEG. 1)**  
**STA DS 550+00 TO 640+00**

Scale  
AS SHOWN

Drawing Status  
**NOT FOR CONSTRUCTION**

Job No	Drawing No	Rev
234180	404-DS-02007	03





MATCHLINE SEE SHEET 404-DS-02007

MATCHLINE SEE SHEET 404-DS-02009

RAIL CONSTRUCTION TYPE	PERMANENT IMPACTS	TEMPORARY IMPACTS	OTHER
CUT	EMERGENT WETLAND	EMERGENT WETLAND	LIMITS OF DISTURBANCE (CONSTRUCTION FOOTPRINT)
EMBANKMENT	FORESTED WETLAND	POND	PERMANENT UTILITIES IMPACTS
RETAIN FILL	POND	STREAMS	TEMPORARY UTILITIES IMPACTS
RETAIN CUT	SCRUB/SHRUB WETLAND	OTHER IMPACTS	ROADWAY IMPACTS
VIADUCT	STREAMS	CONVERSION WETLAND	CULVERT FLOW
			PIER LOCATIONS

NOTES:  
 1. POTENTIALLY NON-JURISDICTIONAL WATERBODIES DO NOT INCLUDE IMPACT QUANTITIES.  
 2. P = PERMANENT IMPACT  
 3. T = TEMPORARY IMPACT  
 4. ES = EPHEMERAL STREAM  
 5. IS = INTERMITTENT STREAM  
 6. PS = PERENNIAL STREAM  
 7. C = CONVERSION  
 8. TEMPORARY, PERMANENT AND CONVERSION IMPACTS ARE SUMMED UP IN ONE CALLOUT BOX FOR EACH FEATURE.  
 9. UTILITY AND TEMPORARY CONSTRUCTION IMPACTS DO NOT REFERENCE A DETAIL.  
 10. DRAWINGS ARE PRINTED AT HALF-SIZE (11X17).

**PLAN**

REFER TO RAIL PLAN & PROFILE DRAWINGS  
 No. CVL-DS-01915, CVL-DS-01916,  
 CVL-DS-01917 & CVL-DS-01918

HORIZ.

REV	DATE	BY	CHK	APP	DESCRIPTION

DESIGNED BY  
**R. ZARATE**  
 DRAWN BY  
**J. HUFNAGEL**  
 CHECKED BY  
**R. ALDREDGE**  
 IN CHARGE  
**R. ZARATE**  
 DATE  
**OCT. 2017**

DALLAS TO HOUSTON  
 HIGH-SPEED RAIL  
 APPLICANT: TCRR  
 SWF-2011-00483

**ARUP**  
 Arup Texas, Inc.  
 10370 Richmond Ave., Suite 475  
 Houston, Texas 77042 USA  
 Tel (713) 783 2787 Fax (713) 343 1467  
 www.arup.com  
 Texas Registered Engineering Firm: F-1990

**FRESE & NICHOLS**  
 2711 North Haskell Ave., Suite 3300  
 Dallas, Texas 75204  
 Tel (214) 217 2200 Fax (214) 217 2201  
 www.freese.com  
 Texas Registered Engineering Firm: F-2144

Client  
  
 1409 South Lamar Street, Suite 1022, Dallas, Texas 75215

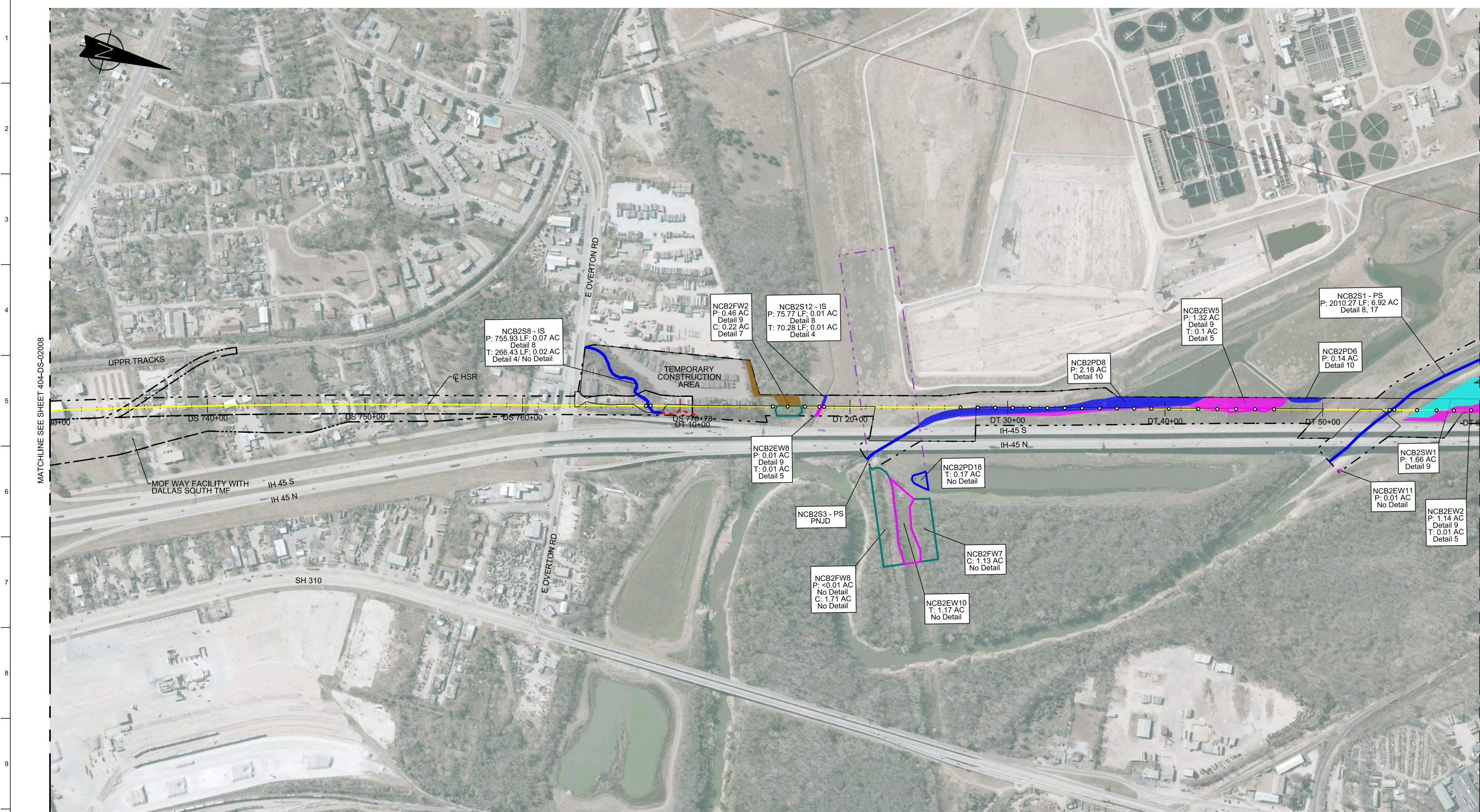
Drawing Title  
**DALLAS SEGMENT**  
**PLAN VIEW (FRA SEG. 1)**  
**STA DS 640+00 TO 730+00**

Scale  
AS SHOWN

Drawing Status  
**NOT FOR CONSTRUCTION**

Job No	Drawing No	Rev
234180	404-DS-02008	03





MATCHLINE SEE SHEET 404-DS-02008

MATCHLINE SEE SHEET 404-DT-02001

RAIL CONSTRUCTION TYPE	PERMANENT IMPACTS	TEMPORARY IMPACTS	OTHER
CUT	EMERGENT WETLAND	EMERGENT WETLAND	LIMITS OF DISTURBANCE (CONSTRUCTION FOOTPRINT)
EMBANKMENT	FORESTED WETLAND	POND	PERMANENT UTILITIES IMPACTS
RETAIN FILL	POND	STREAMS	TEMPORARY UTILITIES IMPACTS
RETAIN CUT	SCRUB/SHRUB WETLAND	OTHER IMPACTS	ROADWAY IMPACTS
VIADUCT	STREAMS	CONVERSION WETLAND	CULVERT FLOW
			PIER LOCATIONS

- NOTES:**
- POTENTIALLY NON-JURISDICTIONAL WATERBODIES DO NOT INCLUDE IMPACT QUANTITIES.
  - P = PERMANENT IMPACT
  - T = TEMPORARY IMPACT
  - ES = EPHEMERAL STREAM
  - IS = INTERMITTENT STREAM
  - PS = PERENNIAL STREAM
  - C = CONVERSION
  - TEMPORARY, PERMANENT AND CONVERSION IMPACTS ARE SUMMED UP IN ONE CALLOUT BOX FOR EACH FEATURE.
  - UTILITY AND TEMPORARY CONSTRUCTION IMPACTS DO NOT REFERENCE A DETAIL.
  - DRAWINGS ARE PRINTED AT HALF-SIZE (11X17).

REFER TO RAIL PLAN & PROFILE DRAWINGS  
No. CVL-DS-01918, CVL-DS-01919,  
CVL-DS-01920 & CVL-DS-01921

300 0 300 600  
HORIZ.

REV	DATE	BY	CHK	APP	DESCRIPTION

DESIGNED BY  
**R. ZARATE**

DRAWN BY  
**J. HUFNAGEL**

CHECKED BY  
**R. ALDREDGE**

IN CHARGE  
**R. ZARATE**

DATE  
**OCT. 2017**

DALLAS TO HOUSTON  
HIGH-SPEED RAIL  
APPLICANT: TCRR  
SWF-2011-00483

**ARUP**

Arup Texas, Inc.  
10370 Richmond Ave., Suite 475  
Houston, Texas 77042 USA  
Tel (713) 783 2787 Fax (713) 343 1467  
www.arup.com  
Texas Registered Engineering Firm: F-1990

**FREESSE & NICHOLS**

2711 North Haskell Ave., Suite 3300  
Dallas, Texas 75204  
Tel (214) 217 2200 Fax (214) 217 2201  
www.freesse.com  
Texas Registered Engineering Firm: F-2144

Client

**TEXAS CENTRAL**

1409 South Lamar Street, Suite 1022, Dallas, Texas 75215

Drawing Title

**DALLAS SEGMENT**

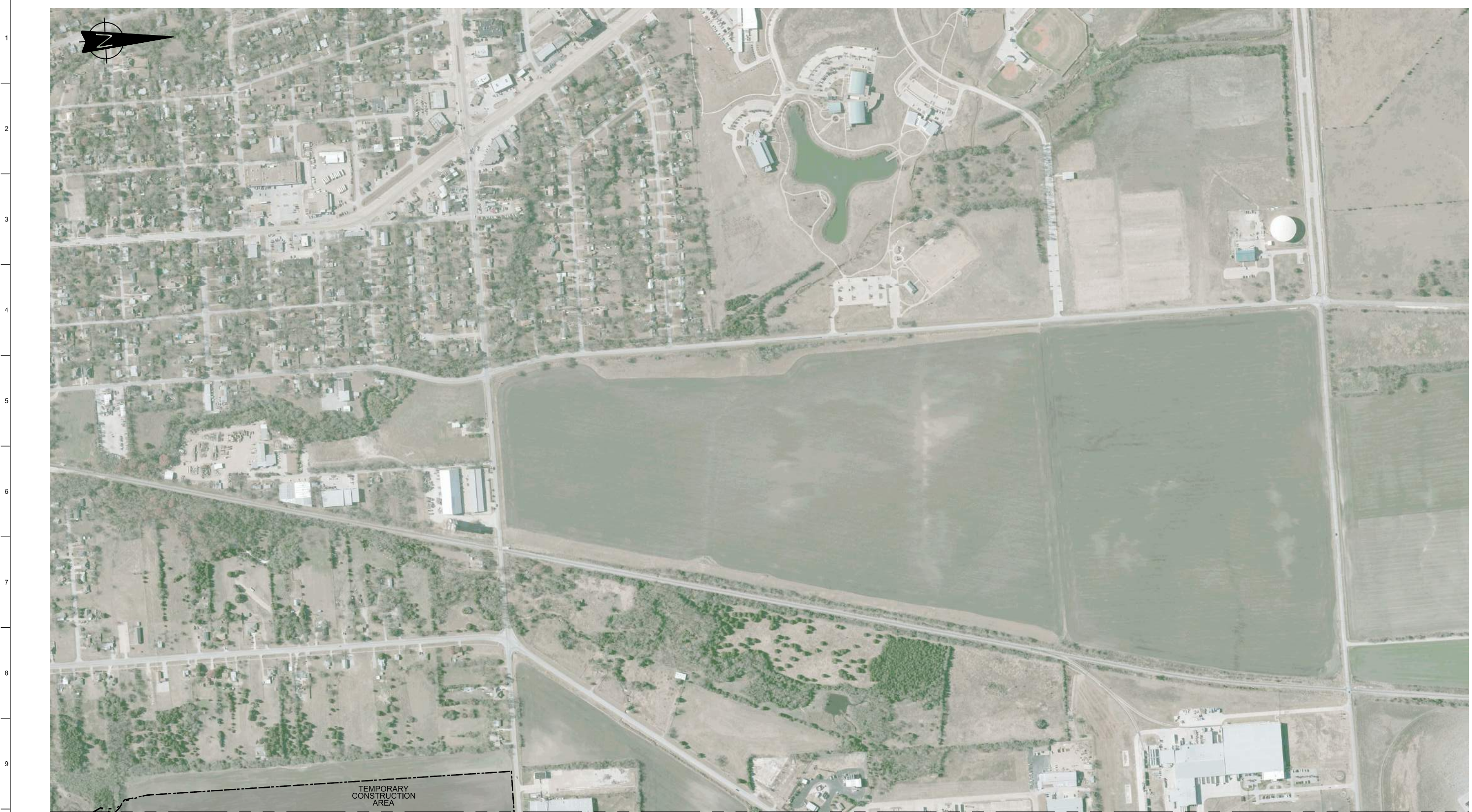
**PLAN VIEW (FRA SEG. 1)**  
**STA DS 730+00 TO DT 60+00**

Scale  
AS SHOWN

Drawing Status  
**NOT FOR CONSTRUCTION**

Job No	Drawing No	Rev
234180	404-DS-02009	03





RAIL CONSTRUCTION TYPE	PERMANENT IMPACTS	TEMPORARY IMPACTS	OTHER
CUT	EMERGENT WETLAND	EMERGENT WETLAND	LIMITS OF DISTURBANCE (CONSTRUCTION FOOTPRINT)
EMBANKMENT	FORESTED WETLAND	POND	PERMANENT UTILITIES IMPACTS
RETAIN FILL	POND	STREAMS	TEMPORARY UTILITIES IMPACTS
RETAIN CUT	SCRUB/SHRUB WETLAND	OTHER IMPACTS	ROADWAY IMPACTS
VIADUCT	STREAMS	CONVERSION WETLAND	CULVERT FLOW
			PIER LOCATIONS

NOTES:

- POTENTIALLY NON-JURISDICTIONAL WATERBODIES DO NOT INCLUDE IMPACT QUANTITIES.
- P = PERMANENT IMPACT
- T = TEMPORARY IMPACT
- ES = EPHEMERAL STREAM
- IS = INTERMITTENT STREAM
- PS = PERENNIAL STREAM
- C = CONVERSION

MATCHLINE SEE SHEET 404-DS-02004

8. TEMPORARY, PERMANENT AND CONVERSION IMPACTS ARE SUMMED UP IN ONE CALLOUT BOX FOR EACH FEATURE.

9. UTILITY AND TEMPORARY CONSTRUCTION IMPACTS DO NOT REFERENCE A DETAIL.

10. DRAWINGS ARE PRINTED AT HALF-SIZE (11X17).

REFER TO RAIL PLAN & PROFILE DRAWINGS No. CVL-DS-01905, CVL-DS-01906 & CVL-DS-01907

300 0 300 600

HORIZ.

REV	DATE	BY	CHK	APP	DESCRIPTION

DESIGNED BY  
**R. ZARATE**

DRAWN BY  
**J. ALMAGUER**

CHECKED BY  
**R. ALDREDGE**

IN CHARGE  
**R. ZARATE**

DATE  
**OCT. 2017**

DALLAS TO HOUSTON  
HIGH-SPEED RAIL  
APPLICANT: TCRR  
SWF-2011-00483

**ARUP**

Arup Texas, Inc.  
10370 Richmond Ave., Suite 475  
Houston, Texas 77042 USA  
Tel (713) 783 2787 Fax (713) 343 1467  
www.arup.com  
Texas Registered Engineering Firm: F-1990

**FREES & NICHOLS**

2711 North Haskell Ave., Suite 3300  
Dallas, Texas 75204  
Tel (214) 217 2200 Fax (214) 217 2201  
www.frees.com  
Texas Registered Engineering Firm: F-2144

Client

**TEXAS CENTRAL**

1409 South Lamar Street, Suite 1022, Dallas, Texas 75215

Drawing Title

**DALLAS SEGMENT**

**PLAN VIEW (FRA SEG. 1)**  
**STA DS 280+00 TO 370+00**

Scale  
AS SHOWN

Drawing Status  
**NOT FOR CONSTRUCTION**

Job No	Drawing No	Rev
234180	404-DS-20210	01





RAIL CONSTRUCTION TYPE	PERMANENT IMPACTS	TEMPORARY IMPACTS	OTHER
CUT	EMERGENT WETLAND	EMERGENT WETLAND	LIMITS OF DISTURBANCE (CONSTRUCTION FOOTPRINT)
EMBANKMENT	FORESTED WETLAND	POND	PERMANENT UTILITIES IMPACTS
RETAIN FILL	POND	STREAMS	TEMPORARY UTILITIES IMPACTS
RETAIN CUT	SCRUB/SHRUB WETLAND	OTHER IMPACTS	ROADWAY IMPACTS
VIADUCT	STREAMS	CONVERSION WETLAND	CULVERT FLOW
			PIER LOCATIONS

- NOTES:
- POTENTIALLY NON-JURISDICTIONAL WATERBODIES DO NOT INCLUDE IMPACT QUANTITIES.
  - P = PERMANENT IMPACT
  - T = TEMPORARY IMPACT
  - ES = EPHEMERAL STREAM
  - IS = INTERMITTENT STREAM
  - PS = PERENNIAL STREAM
  - C = CONVERSION
  - TEMPORARY, PERMANENT AND CONVERSION IMPACTS ARE SUMMED UP IN ONE CALLOUT BOX FOR EACH FEATURE.
  - UTILITY AND TEMPORARY CONSTRUCTION IMPACTS DO NOT REFERENCE A DETAIL.
  - DRAWINGS ARE PRINTED AT HALF-SIZE (11X17).

PLAN

REFER TO RAIL PLAN & PROFILE DRAWINGS No. CVL-DS-01904, CVL-DS-01910 & CVL-DS-01911

300 0 300 600  
HORIZ.

REV	DATE	BY	CHK	APP	DESCRIPTION

DESIGNED BY  
**R. ZARATE**

DRAWN BY  
**J. ALMAGUER**

CHECKED BY  
**R. ALDREDGE**

IN CHARGE  
**R. ZARATE**

DATE  
**OCT. 2017**

DALLAS TO HOUSTON  
HIGH-SPEED RAIL  
APPLICANT: TCRR  
SWF-2011-00483



Arup Texas, Inc.  
10370 Richmond Ave., Suite 475  
Houston, Texas 77042 USA  
Tel (713) 783 2787 Fax (713) 343 1467  
www.arup.com  
Texas Registered Engineering Firm: F-1990



2711 North Haskell Ave., Suite 3300  
Dallas, Texas 75204  
Tel (214) 217 2200 Fax (214) 217 2201  
www.freese.com  
Texas Registered Engineering Firm: F-2144



Client  
1409 South Lamar Street, Suite 1022, Dallas, Texas 75215

Drawing Title  
**DALLAS SEGMENT**

**PLAN VIEW (FRA SEG. 1)  
STA DS 460+00 TO 550+00**

Scale AS SHOWN		
Drawing Status <b>NOT FOR CONSTRUCTION</b>		
Job No 234180	Drawing No 404-DS-02011	Rev





RAIL CONSTRUCTION TYPE	PERMANENT IMPACTS	TEMPORARY IMPACTS	OTHER
CUT	EMERGENT WETLAND	EMERGENT WETLAND	LIMITS OF DISTURBANCE (CONSTRUCTION FOOTPRINT)
EMBANKMENT	FORESTED WETLAND	POND	PERMANENT UTILITIES IMPACTS
RETAIN FILL	POND	STREAMS	TEMPORARY UTILITIES IMPACTS
RETAIN CUT	SCRUB/SHRUB WETLAND	OTHER IMPACTS	ROADWAY IMPACTS
VIADUCT	STREAMS	CONVERSION WETLAND	CULVERT FLOW
			PIER LOCATIONS

- NOTES:
- POTENTIALLY NON-JURISDICTIONAL WATERBODIES DO NOT INCLUDE IMPACT QUANTITIES.
  - P = PERMANENT IMPACT
  - T = TEMPORARY IMPACT
  - ES = EPHEMERAL STREAM
  - IS = INTERMITTENT STREAM
  - PS = PERENNIAL STREAM
  - C = CONVERSION
  - TEMPORARY, PERMANENT AND CONVERSION IMPACTS ARE SUMMED UP IN ONE CALLOUT BOX FOR EACH FEATURE.
  - UTILITY AND TEMPORARY CONSTRUCTION IMPACTS DO NOT REFERENCE A DETAIL.
  - DRAWINGS ARE PRINTED AT HALF-SIZE (11X17).

PLAN

REFER TO RAIL PLAN & PROFILE DRAWINGS No. CVL-DS-01912, CVL-DS-01913, CVL-DS-01914 & CVL-DS-01915

300 0 300 600  
HORIZ.

REV	DATE	BY	CHK	APP	DESCRIPTION

DESIGNED BY  
**R. ZARATE**  
DRAWN BY  
**J. ALMAGUER**  
CHECKED BY  
**R. ALDREDGE**  
IN CHARGE  
**R. ZARATE**  
DATE  
**OCT. 2017**

DALLAS TO HOUSTON  
HIGH-SPEED RAIL  
APPLICANT: TCRR  
SWF-2011-00483



Arup Texas, Inc.  
10370 Richmond Ave., Suite 475  
Houston, Texas 77042 USA  
Tel (713) 783 2787 Fax (713) 343 1467  
www.arup.com  
Texas Registered Engineering Firm: F-1990



2711 North Haskell Ave., Suite 3300  
Dallas, Texas 75204  
Tel (214) 217 2200 Fax (214) 217 2201  
www.freese.com  
Texas Registered Engineering Firm: F-2144

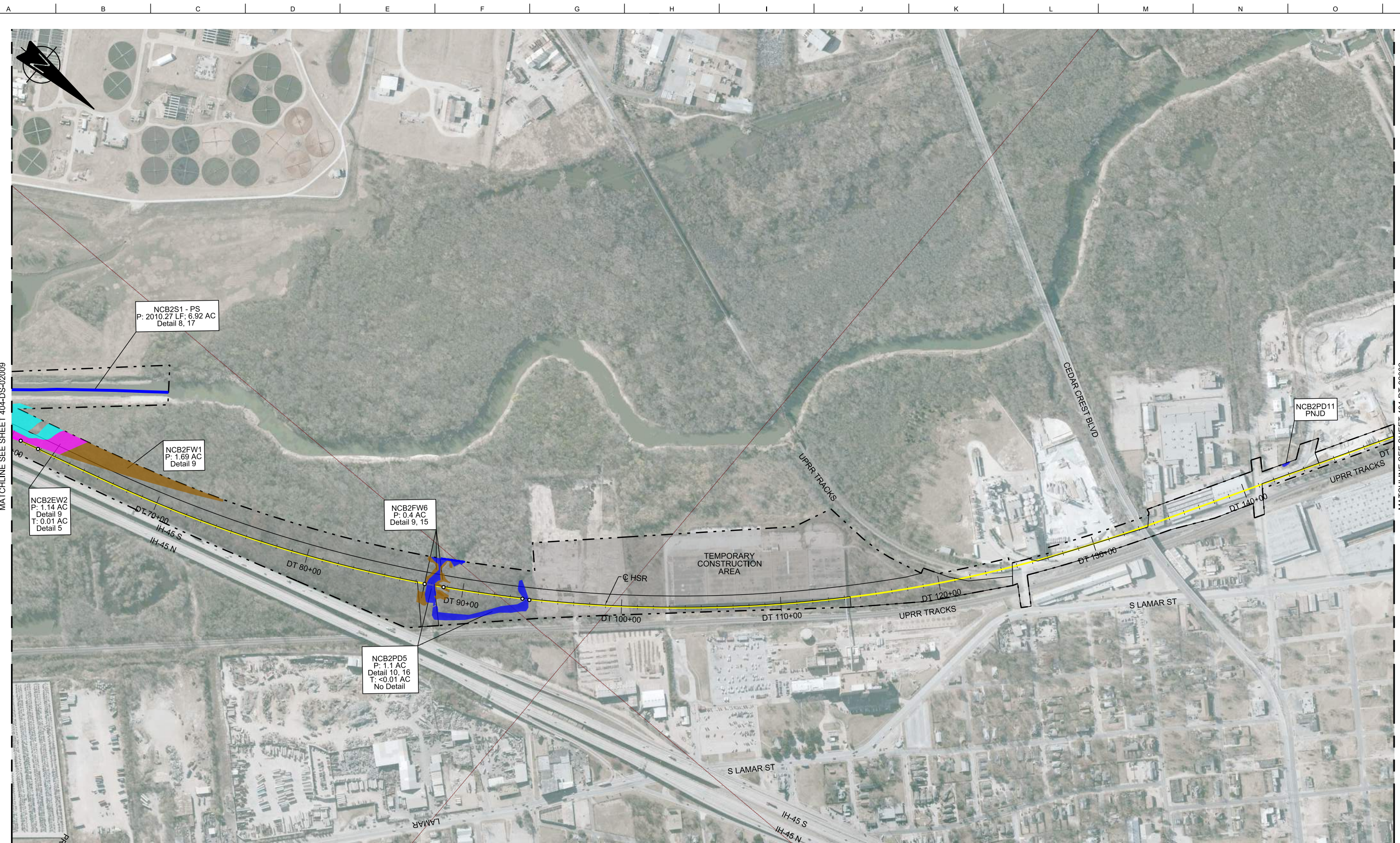


Client  
1409 South Lamar Street, Suite 1022, Dallas, Texas 75215

Drawing Title  
**DALLAS SEGMENT**  
**PLAN VIEW (FRA SEG. 5)**  
**STA HN1 540+00 TO 630+00**

Scale AS SHOWN		
Drawing Status NOT FOR CONSTRUCTION		
Job No 234180	Drawing No 404-DS-02012	Rev





MATCHLINE SEE SHEET 404-DS-02009

MATCHLINE SEE SHEET 404-DT-02002

RAIL CONSTRUCTION TYPE	PERMANENT IMPACTS	TEMPORARY IMPACTS	OTHER
CUT	EMERGENT WETLAND	EMERGENT WETLAND	LIMITS OF DISTURBANCE (CONSTRUCTION FOOTPRINT)
EMBANKMENT	FORESTED WETLAND	POND	PERMANENT UTILITIES IMPACTS
RETAIN FILL	POND	STREAMS	TEMPORARY UTILITIES IMPACTS
RETAIN CUT	SCRUB/SHRUB WETLAND	OTHER IMPACTS	ROADWAY IMPACTS
VIADUCT	STREAMS	CONVERSION WETLAND	CULVERT FLOW
			PIER LOCATIONS

- NOTES:**
- POTENTIALLY NON-JURISDICTIONAL WATERBODIES DO NOT INCLUDE IMPACT QUANTITIES.
  - P = PERMANENT IMPACT
  - T = TEMPORARY IMPACT
  - ES = EPHEMERAL STREAM
  - IS = INTERMITTENT STREAM
  - PS = PERENNIAL STREAM
  - C = CONVERSION
  - TEMPORARY, PERMANENT AND CONVERSION IMPACTS ARE SUMMED UP IN ONE CALLOUT BOX FOR EACH FEATURE.
  - UTILITY AND TEMPORARY CONSTRUCTION IMPACTS DO NOT REFERENCE A DETAIL.
  - DRAWINGS ARE PRINTED AT HALF-SIZE (11X17).

**PLAN**

REFER TO RAIL PLAN & PROFILE DRAWINGS  
No. CVL-DS-01922, CVL-DS-01923 & CVL-DS-01924

300 0 300 600  
HORIZ.

REV	DATE	BY	CHK	APP	DESCRIPTION

DESIGNED BY  
**R. ZARATE**

DRAWN BY  
**J. HUFNAGEL**

CHECKED BY  
**R. ALDREDGE**

IN CHARGE  
**R. ZARATE**

DATE  
**OCT. 2017**

DALLAS TO HOUSTON  
HIGH-SPEED RAIL  
APPLICANT: TCRR  
SWF-2011-00483



Arup Texas, Inc.  
10370 Richmond Ave., Suite 475  
Houston, Texas 77042 USA  
Tel (713) 783 2787 Fax (713) 343 1467  
www.arup.com  
Texas Registered Engineering Firm: F-1990



2711 North Haskell Ave., Suite 3300  
Dallas, Texas 75204  
Tel (214) 217 2200 Fax (214) 217 2201  
www.freese.com  
Texas Registered Engineering Firm: F-2144



Client  
1409 South Lamar Street, Suite 1022, Dallas, Texas 75215

Drawing Title  
**DALLAS SEGMENT**

**PLAN VIEW (FRA SEG. 1)**  
**STA DT 50+00 TO 150+00**

Scale AS SHOWN		
Drawing Status NOT FOR CONSTRUCTION		
Job No 234180	Drawing No 404-DT-02001	Rev 03



