



DEPARTMENT OF THE ARMY
U.S. ARMY CORPS OF ENGINEERS, FORT WORTH DISTRICT
P. O. BOX 17300
FORT WORTH, TEXAS 76102-0300

CESWF-RD

21 October 2025

MEMORANDUM FOR RECORD

SUBJECT: US Army Corps of Engineers (Corps) Pre-2015 Regulatory Regime Approved Jurisdictional Determination in Light of *Sackett v. EPA*, 143 S. Ct. 1322 (2023),¹ [SWF-2025-00394](#), [MFR 1 of 1](#)²

BACKGROUND. An Approved Jurisdictional Determination (AJD) is a Corps document stating the presence or absence of waters of the United States on a parcel or a written statement and map identifying the limits of waters of the United States on a parcel. AJDs are clearly designated appealable actions and will include a basis of JD with the document.³ AJDs are case-specific and are typically made in response to a request. AJDs are valid for a period of five years unless new information warrants revision of the determination before the expiration date or a District Engineer has identified, after public notice and comment, that specific geographic areas with rapidly changing environmental conditions merit re-verification on a more frequent basis.⁴ For the purposes of this AJD, we have relied on section 10 of the Rivers and Harbors Act of 1899 (RHA),⁵ the Clean Water Act (CWA) implementing regulations published by the Department of the Army in 1986 and amended in 1993 (references 2.a. and 2.b. respectively), the 2008 *Rapanos-Carabell* guidance (reference 2.c.), and other applicable guidance, relevant case law and longstanding practice, (collectively the pre-2015 regulatory regime), and the *Sackett* decision (reference 2.d.) in evaluating jurisdiction.

This Memorandum for Record (MFR) constitutes the basis of jurisdiction for a Corps AJD as defined in 33 CFR §331.2. The features addressed in this AJD were evaluated consistent with the definition of “waters of the United States” found in the pre-2015 regulatory regime and consistent with the Supreme Court’s decision in *Sackett*. This AJD did not rely on the 2023 “Revised Definition of ‘Waters of the United States,’” as

¹ While the Supreme Court’s decision in *Sackett* had no effect on some categories of waters covered under the CWA, and no effect on any waters covered under RHA, all categories are included in this Memorandum for Record for efficiency.

² When documenting aquatic resources within the review area that are jurisdictional under the Clean Water Act (CWA), use an additional MFR and group the aquatic resources on each MFR based on the TNW, interstate water, or territorial seas that they are connected to. Be sure to provide an identifier to indicate when there are multiple MFRs associated with a single AJD request (i.e., number them 1, 2, 3, etc.).

³ 33 CFR 331.2.

⁴ Regulatory Guidance Letter 05-02.

⁵ USACE has authority under both Section 9 and Section 10 of the Rivers and Harbors Act of 1899 but for convenience, in this MFR, jurisdiction under RHA will be referred to as Section 10.

CESWF-RD

SUBJECT: Pre-2015 Regulatory Regime Approved Jurisdictional Determination in Light of *Sackett v. EPA*, 143 S. Ct. 1322 (2023), [SWF-2025-00394](#)

amended on 8 September 2023 (Amended 2023 Rule) because, as of the date of this decision, the Amended 2023 Rule is not applicable [in this state](#) due to litigation.

1. SUMMARY OF CONCLUSIONS.

- a. Provide a list of each individual feature within the review area and the jurisdictional status of each one (i.e., identify whether each feature is/is not a water of the United States and/or a navigable water of the United States).
 - i. WB001: NON-WOTUS-TRIB.NEGATIVE-A5
 - ii. WB002: NON-WOTUS-TRIB.NEGATIVE-A5
 - iii. WB003: NON-WOTUS-TRIB.NEGATIVE-A5
 - iv. WB004: NON-WOTUS-TRIB.NEGATIVE-A5
 - v. WB005: NON-WOTUS-TRIB.NEGATIVE-A5
 - vi. S001: NON-JD - RAPANOS.GUIDE - SWALE.EROSION
 - vii. S002: NON-JD - RAPANOS.GUIDE - SWALE.EROSION
 - viii. WB006: NON-WOTUS-TRIB.NEGATIVE-A5
 - ix. WB007: NON-WOTUS-TRIB.NEGATIVE-A5
 - x. WB008: NON-WOTUS-TRIB.NEGATIVE-A5
 - xi. S003: NON-JD - RAPANOS.GUIDE - SWALE.EROSION
 - xii. S004: NON-JD - RAPANOS.GUIDE - SWALE.EROSION
 - xiii. S005: NON-JD - RAPANOS.GUIDE - SWALE.EROSION
 - xiv. S006: NON-JD - RAPANOS.GUIDE - SWALE.EROSION
 - xv. WB009: NON-WOTUS-TRIB.NEGATIVE-A5
 - xvi. WB010: NON-WOTUS-TRIB.NEGATIVE-A5
 - xvii. WB011: NON-WOTUS-TRIB.NEGATIVE-A5
 - xviii. S007: NON-JD - RAPANOS.GUIDE - SWALE.EROSION
 - xix. WB012: NON-WOTUS-TRIB.NEGATIVE-A5
 - xx. WB013: NON-WOTUS-TRIB.NEGATIVE-A5
 - xxi. S008: NON-JD - RAPANOS.GUIDE - SWALE.EROSION
 - xxii. S009: NON-JD - RAPANOS.GUIDE - SWALE.EROSION
 - xxiii. S010: NON-JD - RAPANOS.GUIDE - SWALE.EROSION
 - xxiv. S011: NON-JD - RAPANOS.GUIDE - SWALE.EROSION
 - xxv. S012: NON-JD - RAPANOS.GUIDE - SWALE.EROSION
 - xxvi. S013: NON-JD - RAPANOS.GUIDE - SWALE.EROSION
 - xxvii. WB014: NON-WOTUS-TRIB.NEGATIVE-A5
 - xxviii. S014: NON-JD - RAPANOS.GUIDE - SWALE.EROSION
 - xxix. S015: NON-JD - RAPANOS.GUIDE - SWALE.EROSION
 - xxx. S016: NON-JD - RAPANOS.GUIDE - SWALE.EROSION
 - xxxi. WB015: NON-WOTUS-TRIB.NEGATIVE-A5
 - xxxii. WB016: NON-WOTUS-TRIB.NEGATIVE-A5
 - xxxiii. WB017: NON-WOTUS-TRIB.NEGATIVE-A5

CESWF-RD

SUBJECT: Pre-2015 Regulatory Regime Approved Jurisdictional Determination in Light of *Sackett v. EPA*, 143 S. Ct. 1322 (2023), [SWF-2025-00394](#)

- xxxiv. WB018: NON-WOTUS-TRIB.NEGATIVE-A5
- xxxv. WB019: NON-WOTUS-TRIB.NEGATIVE-A5
- xxxvi. WB020: A5.TRIB-404
- xxxvii. WB021: NON-WOTUS-TRIB.NEGATIVE-A5
- xxxviii. S017: NON-JD - RAPANOS.GUIDE - SWALE.EROSION
- xxxix. S018: NON-JD - RAPANOS.GUIDE - SWALE.EROSION
 - xl. S019: NON-JD - RAPANOS.GUIDE - SWALE.EROSION
 - xli. S020: NON-JD - RAPANOS.GUIDE - SWALE.EROSION
 - xl.ii. S021: NON-JD - RAPANOS.GUIDE - SWALE.EROSION
- xl.iii. WB022: NON-WOTUS-TRIB.NEGATIVE-A5
- xl.iiii. WB023: NON-WOTUS-TRIB.NEGATIVE-A5
- xl.v. WB024: NON-WOTUS-TRIB.NEGATIVE-A5
- xl.vi. WB025: NON-WOTUS-TRIB.NEGATIVE-A5
- xl.vii. S022: NON-JD - RAPANOS.GUIDE - SWALE.EROSION
- xl.viii. S023: NON-JD - RAPANOS.GUIDE - SWALE.EROSION
- xl.ix. S024: NON-JD - RAPANOS.GUIDE - SWALE.EROSION
 - I. WB026: NON-WOTUS-TRIB.NEGATIVE-A5
 - ii. S025: NON-JD - RAPANOS.GUIDE - SWALE.EROSION
 - iii. S026: NON-JD - RAPANOS.GUIDE - SWALE.EROSION
 - iiii. S027: NON-JD - RAPANOS.GUIDE - SWALE.EROSION
- xl.iv. WB027: NON-WOTUS-TRIB.NEGATIVE-A5
- xl.v. WB028: NON-WOTUS-TRIB.NEGATIVE-A5
- xl.vi. S028: NON-JD - RAPANOS.GUIDE - SWALE.EROSION
- xl.vii. S029: NON-JD - RAPANOS.GUIDE - SWALE.EROSION
- xl.viii. WB029: NON-WOTUS-TRIB.NEGATIVE-A5
- xl.ix. WB030: NON-WOTUS-TRIB.NEGATIVE-A5
- xl.x. WB031: NON-WOTUS-TRIB.NEGATIVE-A5
- xl.xi. WB032: NON-WOTUS-TRIB.NEGATIVE-A5
- xl.xii. S030: NON-JD - RAPANOS.GUIDE - SWALE.EROSION
- xl.xiii. S031: NON-JD - RAPANOS.GUIDE - SWALE.EROSION
- xl.xiv. S032: NON-JD - RAPANOS.GUIDE - SWALE.EROSION
- xl.xv. S033: NON-JD - RAPANOS.GUIDE - SWALE.EROSION
- xl.xvi. S034: NON-JD - RAPANOS.GUIDE - SWALE.EROSION
- xl.xvii. S035: NON-JD - RAPANOS.GUIDE - SWALE.EROSION
- xl.xviii. S036: NON-JD - RAPANOS.GUIDE - SWALE.EROSION
- xl.xix. S037: NON-JD - RAPANOS.GUIDE - SWALE.EROSION
- xl.xx. S038: NON-JD - RAPANOS.GUIDE - SWALE.EROSION
- xl.xxi. S039: NON-JD - RAPANOS.GUIDE - SWALE.EROSION
- xl.xxii. S040: NON-JD - RAPANOS.GUIDE - SWALE.EROSION
- xl.xxiii. WB033: NON-WOTUS-TRIB.NEGATIVE-A5
- xl.xxiv. S041: NON-JD - RAPANOS.GUIDE - SWALE.EROSION
- xl.xv. S042: NON-JD - RAPANOS.GUIDE - SWALE.EROSION

CESWF-RD

SUBJECT: Pre-2015 Regulatory Regime Approved Jurisdictional Determination in Light of *Sackett v. EPA*, 143 S. Ct. 1322 (2023), [SWF-2025-00394](#)

- lxxvi. WB034: NON-WOTUS-TRIB.NEGATIVE-A5
- lxxvii. S043: NON-JD - RAPANOS.GUIDE - SWALE.EROSION
- lxxviii. S044: NON-JD - RAPANOS.GUIDE - SWALE.EROSION
- lxxix. S045: NON-JD - RAPANOS.GUIDE - SWALE.EROSION
- lxxx. S046: NON-JD - RAPANOS.GUIDE - SWALE.EROSION
- lxxxi. S047: NON-JD - RAPANOS.GUIDE - SWALE.EROSION
- lxxxii. S048: NON-JD - RAPANOS.GUIDE - SWALE.EROSION
- lxxxiii. S049: NON-JD - RAPANOS.GUIDE - SWALE.EROSION
- lxxxiv. S050: NON-JD - RAPANOS.GUIDE - SWALE.EROSION
- lxxxv. S051: NON-JD - RAPANOS.GUIDE - SWALE.EROSION
- lxxxvi. S052: NON-JD - RAPANOS.GUIDE - SWALE.EROSION
- lxxxvii. S053: NON-JD - RAPANOS.GUIDE - SWALE.EROSION
- lxxxviii. S054: NON-JD - RAPANOS.GUIDE - SWALE.EROSION
- lxxxix. S055: NON-JD - RAPANOS.GUIDE - SWALE.EROSION
- xc. S056: NON-JD - RAPANOS.GUIDE - SWALE.EROSION
- xc. S057: NON-JD - RAPANOS.GUIDE - SWALE.EROSION
- xcii. S058: NON-JD - RAPANOS.GUIDE - SWALE.EROSION
- xciii. S059: NON-JD - RAPANOS.GUIDE - SWALE.EROSION
- xciv. S060: NON-JD - RAPANOS.GUIDE - SWALE.EROSION
- xcv. S061: NON-JD - RAPANOS.GUIDE - SWALE.EROSION
- xcvi. S062: NON-JD - RAPANOS.GUIDE - SWALE.EROSION
- xcvii. S063: NON-JD - RAPANOS.GUIDE - SWALE.EROSION
- xcviii. S064: NON-JD - RAPANOS.GUIDE - SWALE.EROSION
- xcix. S065: NON-JD - RAPANOS.GUIDE - SWALE.EROSION
- c. S066: NON-JD - RAPANOS.GUIDE - SWALE.EROSION
- ci. S067: NON-JD - RAPANOS.GUIDE - SWALE.EROSION
- cii. S068: NON-JD - RAPANOS.GUIDE - SWALE.EROSION
- ciii. S069: NON-JD - RAPANOS.GUIDE - SWALE.EROSION
- civ. S070: NON-JD - RAPANOS.GUIDE - SWALE.EROSION
- cv. S071: NON-JD - RAPANOS.GUIDE - SWALE.EROSION
- cvi. S072: NON-JD - RAPANOS.GUIDE - SWALE.EROSION
- cvii. S073: NON-JD - RAPANOS.GUIDE - SWALE.EROSION
- cviii. S074: NON-JD - RAPANOS.GUIDE - SWALE.EROSION
- cix. S075: NON-JD - RAPANOS.GUIDE - SWALE.EROSION
- cx. S076: NON-JD - RAPANOS.GUIDE - SWALE.EROSION
- cx. S077: NON-JD - RAPANOS.GUIDE - SWALE.EROSION
- cxii. S078: NON-JD - RAPANOS.GUIDE - SWALE.EROSION
- cxiii. S079: NON-JD - RAPANOS.GUIDE - SWALE.EROSION
- cxiv. S080: NON-JD - RAPANOS.GUIDE - SWALE.EROSION
- cxv. S081: NON-JD - RAPANOS.GUIDE - SWALE.EROSION
- cxvi. S082: NON-JD - RAPANOS.GUIDE - SWALE.EROSION
- cxvii. S083: NON-JD - RAPANOS.GUIDE - SWALE.EROSION

CESWF-RD

SUBJECT: Pre-2015 Regulatory Regime Approved Jurisdictional Determination in Light of *Sackett v. EPA*, 143 S. Ct. 1322 (2023), [SWF-2025-00394](#)

- cxviii. S084: NON-JD - RAPANOS.GUIDE - SWALE.EROSION
- cxix. S085: NON-JD - RAPANOS.GUIDE - SWALE.EROSION
- cxx. S086: NON-JD - RAPANOS.GUIDE - SWALE.EROSION
- cxxi. S087: NON-JD - RAPANOS.GUIDE - SWALE.EROSION
- cxxii. S088: NON-JD - RAPANOS.GUIDE - SWALE.EROSION
- cxxiii. S089: NON-JD - RAPANOS.GUIDE - SWALE.EROSION
- cxxiv. S090: NON-JD - RAPANOS.GUIDE - SWALE.EROSION
- cxxv. S091: NON-JD - RAPANOS.GUIDE - SWALE.EROSION
- cxxvi. S092: NON-JD - RAPANOS.GUIDE - SWALE.EROSION
- cxxvii. S093: NON-JD - RAPANOS.GUIDE - SWALE.EROSION
- cxxviii. S094: NON-JD - RAPANOS.GUIDE - SWALE.EROSION
- cxxix. S095: NON-JD - RAPANOS.GUIDE - SWALE.EROSION
- cxxx. S096: NON-JD - RAPANOS.GUIDE - SWALE.EROSION
- cxxxi. S097: NON-JD - RAPANOS.GUIDE - SWALE.EROSION
- cxxxii. S098: NON-JD - RAPANOS.GUIDE - SWALE.EROSION
- cxxxiii. S099: NON-JD - RAPANOS.GUIDE - SWALE.EROSION
- cxxxiv. S100: NON-JD - RAPANOS.GUIDE - SWALE.EROSION
- cxxxv. S101: NON-JD - RAPANOS.GUIDE - SWALE.EROSION
- cxxxvi. S102: NON-JD - RAPANOS.GUIDE - SWALE.EROSION
- cxxxvii. S103: NON-JD - RAPANOS.GUIDE - SWALE.EROSION
- cxxxviii. S104: NON-JD - RAPANOS.GUIDE - SWALE.EROSION
- cxxxix. S105: NON-JD - RAPANOS.GUIDE - SWALE.EROSION
- cxl. S106: NON-JD - RAPANOS.GUIDE - SWALE.EROSION
- cxli. S107: NON-JD - RAPANOS.GUIDE - SWALE.EROSION
- cxlii. S108: NON-JD - RAPANOS.GUIDE - SWALE.EROSION
- cxliii. S109: NON-JD - RAPANOS.GUIDE - SWALE.EROSION
- cxliv. S110: NON-JD - RAPANOS.GUIDE - SWALE.EROSION
- cxlv. S111: NON-JD - RAPANOS.GUIDE - SWALE.EROSION
- cxlvi. S112: NON-JD - RAPANOS.GUIDE - SWALE.EROSION
- cxlvii. S113: NON-JD - RAPANOS.GUIDE - SWALE.EROSION
- cxlviii. S114: NON-JD - RAPANOS.GUIDE - SWALE.EROSION
- cxlix. S115: NON-JD - RAPANOS.GUIDE - SWALE.EROSION
- cl. S116: NON-JD - RAPANOS.GUIDE - SWALE.EROSION
- cli. S117: NON-JD - RAPANOS.GUIDE - SWALE.EROSION
- clii. S118: NON-JD - RAPANOS.GUIDE - SWALE.EROSION
- cliii. S119: NON-JD - RAPANOS.GUIDE - SWALE.EROSION
- cliv. S120: NON-JD - RAPANOS.GUIDE - SWALE.EROSION
- clv. S121: NON-JD - RAPANOS.GUIDE - SWALE.EROSION
- clvi. S122: NON-JD - RAPANOS.GUIDE - SWALE.EROSION
- clvii. S123: NON-JD - RAPANOS.GUIDE - SWALE.EROSION
- clviii. S124: NON-JD - RAPANOS.GUIDE - SWALE.EROSION
- clix. S125: NON-JD - RAPANOS.GUIDE - SWALE.EROSION

CESWF-RD

SUBJECT: Pre-2015 Regulatory Regime Approved Jurisdictional Determination in Light of *Sackett v. EPA*, 143 S. Ct. 1322 (2023), [SWF-2025-00394](#)

- ccii. WB035: NON-WOTUS-TRIB.NEGATIVE-A5
- cciii. S168: NON-JD - RAPANOS.GUIDE - SWALE.EROSION
- cciv. WB036: NON-WOTUS-TRIB.NEGATIVE-A5
- ccv. S169: NON-JD - RAPANOS.GUIDE - SWALE.EROSION
- ccvi. S170: NON-JD - RAPANOS.GUIDE - SWALE.EROSION
- ccvii. S171: NON-JD - RAPANOS.GUIDE - SWALE.EROSION
- ccviii. S172: NON-JD - RAPANOS.GUIDE - SWALE.EROSION
- ccix. S173: NON-JD - RAPANOS.GUIDE - SWALE.EROSION
- ccx. S174: NON-JD - RAPANOS.GUIDE - SWALE.EROSION
- ccxi. S175: NON-JD - RAPANOS.GUIDE - SWALE.EROSION
- ccxii. S176: NON-JD - RAPANOS.GUIDE - SWALE.EROSION
- ccxiii. S177: NON-JD - RAPANOS.GUIDE - SWALE.EROSION
- ccxiv. S178: NON-JD - RAPANOS.GUIDE - SWALE.EROSION
- ccxv. S179: NON-JD - RAPANOS.GUIDE - SWALE.EROSION
- ccxvi. S180: NON-JD - RAPANOS.GUIDE - SWALE.EROSION
- ccxvii. S181: NON-JD - RAPANOS.GUIDE - SWALE.EROSION
- ccxviii. S182: NON-JD - RAPANOS.GUIDE - SWALE.EROSION
- ccxix. S183: NON-JD - RAPANOS.GUIDE - SWALE.EROSION
- ccxx. WB037: NON-WOTUS-TRIB.NEGATIVE-A5
- ccxxi. WB038: A5.TRIB-404
- ccxxii. WB039: A5.TRIB-404
- ccxxiii. S184: NON-JD - RAPANOS.GUIDE - SWALE.EROSION
- ccxxiv. WB040: NON-WOTUS-TRIB.NEGATIVE-A5
- ccxxv. S185: NON-JD - RAPANOS.GUIDE - SWALE.EROSION
- ccxxvi. WB041: NON-WOTUS-TRIB.NEGATIVE-A5
- ccxxvii. WB022b: NON-WOTUS-TRIB.NEGATIVE-A5
- ccxxviii. S186: NON-JD - RAPANOS.GUIDE - SWALE.EROSION
- ccxxix. S187: NON-JD - RAPANOS.GUIDE - SWALE.EROSION
- ccxxx. S188: NON-JD - RAPANOS.GUIDE - SWALE.EROSION
- ccxxxi. S189: NON-JD - RAPANOS.GUIDE - SWALE.EROSION
- ccxxxii. WB043: NON-WOTUS-TRIB.NEGATIVE-A5
- ccxxxiii. WB044: NON-WOTUS-TRIB.NEGATIVE-A5
- ccxxxiv. S190: NON-JD - RAPANOS.GUIDE - SWALE.EROSION
- ccxxxv. S191: NON-JD - RAPANOS.GUIDE - SWALE.EROSION
- ccxxxvi. S192: NON-JD - RAPANOS.GUIDE - SWALE.EROSION
- ccxxxvii. WB045: NON-WOTUS-TRIB.NEGATIVE-A5
- ccxxxviii. S193: NON-JD - RAPANOS.GUIDE - SWALE.EROSION
- ccxxxix. WB046: NON-WOTUS-TRIB.NEGATIVE-A5
- ccxl. S194: NON-JD - RAPANOS.GUIDE - SWALE.EROSION
- ccxli. WB047: NON-WOTUS-TRIB.NEGATIVE-A5
- ccxlii. NON-JD ART.POND01: NON-JD - PREAMBLE - ART.LAKE.POND -
Preamble water - Artificial lake/pond created by excavating/diking dry land,

CESWF-RD

SUBJECT: Pre-2015 Regulatory Regime Approved Jurisdictional Determination in Light of *Sackett v. EPA*, 143 S. Ct. 1322 (2023), [SWF-2025-00394](#)

- ccliii. NON-JD ART.POND13: NON-JD - PREAMBLE - ART.LAKE.POND - Preamble water - Artificial lake/pond created by excavating/diking dry land, used exclusively for purposes such as stock watering, irrigation, settling basins, or rice growing
- ccliv. NON-JD ART.POND16: NON-JD - PREAMBLE - ART.LAKE.POND - Preamble water - Artificial lake/pond created by excavating/diking dry land, used exclusively for purposes such as stock watering, irrigation, settling basins, or rice growing
- cclv. NON-JD ART.POND17: NON-JD - PREAMBLE - ART.LAKE.POND - Preamble water - Artificial lake/pond created by excavating/diking dry land, used exclusively for purposes such as stock watering, irrigation, settling basins, or rice growing
- cclvi. NON-JD ART.POND18: NON-JD - PREAMBLE - ART.LAKE.POND - Preamble water - Artificial lake/pond created by excavating/diking dry land, used exclusively for purposes such as stock watering, irrigation, settling basins, or rice growing
- cclvii. NON-JD ART.POND19: NON-JD - PREAMBLE - ART.LAKE.POND - Preamble water - Artificial lake/pond created by excavating/diking dry land, used exclusively for purposes such as stock watering, irrigation, settling basins, or rice growing
- cclviii. NON-JD ART.POND20: NON-JD - PREAMBLE - ART.LAKE.POND - Preamble water - Artificial lake/pond created by excavating/diking dry land, used exclusively for purposes such as stock watering, irrigation, settling basins, or rice growing
- cclix. NON-JD ART.POND26: NON-JD - PREAMBLE - ART.LAKE.POND - Preamble water - Artificial lake/pond created by excavating/diking dry land, used exclusively for purposes such as stock watering, irrigation, settling basins, or rice growing
- cclx. NON-JD ART.POND27: NON-JD - PREAMBLE - ART.LAKE.POND - Preamble water - Artificial lake/pond created by excavating/diking dry land, used exclusively for purposes such as stock watering, irrigation, settling basins, or rice growing
- cclxi. NON-JD ART.POND28: NON-JD - PREAMBLE - ART.LAKE.POND - Preamble water - Artificial lake/pond created by excavating/diking dry land, used exclusively for purposes such as stock watering, irrigation, settling basins, or rice growing
- cclxii. NON-JD ART.POND29: NON-JD - PREAMBLE - ART.LAKE.POND - Preamble water - Artificial lake/pond created by excavating/diking dry land, used exclusively for purposes such as stock watering, irrigation, settling basins, or rice growing

CESWF-RD

SUBJECT: Pre-2015 Regulatory Regime Approved Jurisdictional Determination in Light of *Sackett v. EPA*, 143 S. Ct. 1322 (2023), [SWF-2025-00394](#)

2. REFERENCES.

- a. Final Rule for Regulatory Programs of the Corps of Engineers, 51 FR 41206 (November 13, 1986).
- b. Clean Water Act Regulatory Programs, 58 FR 45008 (August 25, 1993).
- c. U.S. EPA & U.S. Army Corps of Engineers, Clean Water Act Jurisdiction Following the U.S. Supreme Court's Decision in *Rapanos v. United States & Carabell v. United States* (December 2, 2008)
- d. *Sackett v. EPA*, 598 U.S. 651, 143 S. Ct. 1322 (2023)

3. REVIEW AREA. The applicant assessed an approximately 745-acre tract in Jack County, Texas (Approximate center Lat/Lon: 33.086558, -97.960071 NAD83) for industrial development, access drives, utility connections, stormwater management ponds, and other ancillary infrastructure (Figure 1). The site consists primarily of undeveloped pasture with one abandoned residence, a metal garage structure, and several oil and gas wells and pipeline infrastructure. The project is designed to avoid impacts on all jurisdictional features.
4. NEAREST TRADITIONAL NAVIGABLE WATER (TNW), INTERSTATE WATER, OR THE TERRITORIAL SEAS TO WHICH THE AQUATIC RESOURCE IS CONNECTED. The Trinity River, a Section 10 TNW within the Fort Worth District for a substantial distance.⁶
5. FLOWPATH FROM THE SUBJECT AQUATIC RESOURCES TO A TNW, INTERSTATE WATER, OR THE TERRITORIAL SEAS. Aquatic features generally flow into Lake Bridgeport, which drains into the West Fork Trinity River, which drains into the Trinity River (Section 10 TNW).

⁶ This MFR should not be used to complete a new stand-alone TNW determination. A stand-alone TNW determination for a water that is not subject to Section 9 or 10 of the Rivers and Harbors Act of 1899 (RHA) is completed independently of a request for an AJD. A stand-alone TNW determination is conducted for a specific segment of river or stream or other type of waterbody, such as a lake, where upstream or downstream limits or lake borders are established.

CESWF-RD

SUBJECT: Pre-2015 Regulatory Regime Approved Jurisdictional Determination in Light of *Sackett v. EPA*, 143 S. Ct. 1322 (2023), [SWF-2025-00394](#)

6. SECTION 10 JURISDICTIONAL WATERS⁷: Describe aquatic resources or other features within the review area determined to be jurisdictional in accordance with Section 10 of the Rivers and Harbors Act of 1899. Include the size of each aquatic resource or other feature within the review area and how it was determined to be jurisdictional in accordance with Section 10.⁸ [N/A](#)

7. SECTION 404 JURISDICTIONAL WATERS: Describe the aquatic resources within the review area that were found to meet the definition of waters of the United States in accordance with the pre-2015 regulatory regime and consistent with the Supreme Court’s decision in *Sackett*. List each aquatic resource separately, by name, consistent with the naming convention used in section 1, above. Include a rationale for each aquatic resource, supporting that the aquatic resource meets the relevant category of “waters of the United States” in the pre-2015 regulatory regime. The rationale should also include a written description of, or reference to a map in the administrative record that shows, the lateral limits of jurisdiction for each aquatic resource, including how that limit was determined, and incorporate relevant references used. Include the size of each aquatic resource in acres or linear feet and attach and reference related figures as needed.
 - a. TNWs (a)(1): [N/A](#)
 - b. Interstate Waters (a)(2): [N/A](#)
 - c. Other Waters (a)(3): [N/A](#)
 - d. Impoundments (a)(4): [N/A](#)
 - e. Tributaries (a)(5):

[WB020, a 2858 LF intermittent stream, with an average OHWM of 3 LF with an area of 8574 sqft, that is an Unnamed Tributary to Hunt Creek](#)

[WB038, a 1053 LF intermittent stream, with an average OHWM of 10 LF with an area of 10530 sqft, that is an Unnamed Tributary to Jasper Creek](#)

⁷ 33 CFR 329.9(a) A waterbody which was navigable in its natural or improved state, or which was susceptible of reasonable improvement (as discussed in § 329.8(b) of this part) retains its character as “navigable in law” even though it is not presently used for commerce, or is presently incapable of such use because of changed conditions or the presence of obstructions.

⁸ This MFR is not to be used to make a report of findings to support a determination that the water is a navigable water of the United States. The district must follow the procedures outlined in 33 CFR part 329.14 to make a determination that water is a navigable water of the United States subject to Section 10 of the RHA.

CESWF-RD

SUBJECT: Pre-2015 Regulatory Regime Approved Jurisdictional Determination in Light of *Sackett v. EPA*, 143 S. Ct. 1322 (2023), [SWF-2025-00394](#)

WB039, a 2219 LF intermittent stream, with an average OHWM of 35 LF with an area of 77665 sqft, that is an Unnamed Tributary to Jasper Creek

- f. The territorial seas (a)(6): *N/A*
- g. Adjacent wetlands (a)(7): *N/A*

8. NON-JURISDICTIONAL AQUATIC RESOURCES AND FEATURES

- a. Describe aquatic resources and other features within the review area identified as “generally non-jurisdictional” in the preamble to the 1986 regulations (referred to as “preamble waters”).⁹ Include size of the aquatic resource or feature within the review area and describe how it was determined to be non-jurisdictional under the CWA as a preamble water.
 - [SWF-2025-00394-NON-JD ART.POND01](#) is a NON-JD - PREAMBLE - ART.LAKE.POND - Preamble water - Artificial lake/pond created by excavating/diking dry land, used exclusively for purposes such as stock watering, irrigation, settling basins, or rice growing
 - [SWF-2025-00395-NON-JD ART.POND02](#) is a NON-JD - PREAMBLE - ART.LAKE.POND - Preamble water - Artificial lake/pond created by excavating/diking dry land, used exclusively for purposes such as stock watering, irrigation, settling basins, or rice growing
 - [SWF-2025-00396-NON-JD ART.POND03](#) is a NON-JD - PREAMBLE - ART.LAKE.POND - Preamble water - Artificial lake/pond created by excavating/diking dry land, used exclusively for purposes such as stock watering, irrigation, settling basins, or rice growing
 - [SWF-2025-00397-NON-JD ART.POND04](#) is a NON-JD - PREAMBLE - ART.LAKE.POND - Preamble water - Artificial lake/pond created by excavating/diking dry land, used exclusively for purposes such as stock watering, irrigation, settling basins, or rice growing
 - [SWF-2025-00398-NON-JD ART.POND06](#) is a NON-JD - PREAMBLE - ART.LAKE.POND - Preamble water - Artificial lake/pond created by excavating/diking dry land, used exclusively for purposes such as stock watering, irrigation, settling basins, or rice growing
 - [SWF-2025-00399-NON-JD ART.POND07](#) is a NON-JD - PREAMBLE - ART.LAKE.POND - Preamble water - Artificial lake/pond created by excavating/diking dry land, used exclusively for purposes such as stock watering, irrigation, settling basins, or rice growing

⁹ 51 FR 41217, November 13, 1986.

CESWF-RD

SUBJECT: Pre-2015 Regulatory Regime Approved Jurisdictional Determination in Light of *Sackett v. EPA*, 143 S. Ct. 1322 (2023), SWF-2025-00394

- SWF-2025-00400-NON-JD ART.POND08 is a NON-JD - PREAMBLE - ART.LAKE.POND - Preamble water - Artificial lake/pond created by excavating/diking dry land, used exclusively for purposes such as stock watering, irrigation, settling basins, or rice growing
- SWF-2025-00401-NON-JD ART.POND09 is a NON-JD - PREAMBLE - ART.LAKE.POND - Preamble water - Artificial lake/pond created by excavating/diking dry land, used exclusively for purposes such as stock watering, irrigation, settling basins, or rice growing
- SWF-2025-00402-NON-JD ART.POND10 is a NON-JD - PREAMBLE - ART.LAKE.POND - Preamble water - Artificial lake/pond created by excavating/diking dry land, used exclusively for purposes such as stock watering, irrigation, settling basins, or rice growing
- SWF-2025-00403-NON-JD ART.POND11 is a NON-JD - PREAMBLE - ART.LAKE.POND - Preamble water - Artificial lake/pond created by excavating/diking dry land, used exclusively for purposes such as stock watering, irrigation, settling basins, or rice growing
- SWF-2025-00404-NON-JD ART.POND12 is a NON-JD - PREAMBLE - ART.LAKE.POND - Preamble water - Artificial lake/pond created by excavating/diking dry land, used exclusively for purposes such as stock watering, irrigation, settling basins, or rice growing
- SWF-2025-00405-NON-JD ART.POND13 is a NON-JD - PREAMBLE - ART.LAKE.POND - Preamble water - Artificial lake/pond created by excavating/diking dry land, used exclusively for purposes such as stock watering, irrigation, settling basins, or rice growing
- SWF-2025-00406-NON-JD ART.POND16 is a NON-JD - PREAMBLE - ART.LAKE.POND - Preamble water - Artificial lake/pond created by excavating/diking dry land, used exclusively for purposes such as stock watering, irrigation, settling basins, or rice growing
- SWF-2025-00407-NON-JD ART.POND17 is a NON-JD - PREAMBLE - ART.LAKE.POND - Preamble water - Artificial lake/pond created by excavating/diking dry land, used exclusively for purposes such as stock watering, irrigation, settling basins, or rice growing
- SWF-2025-00408-NON-JD ART.POND18 is a NON-JD - PREAMBLE - ART.LAKE.POND - Preamble water - Artificial lake/pond created by excavating/diking dry land, used exclusively for purposes such as stock watering, irrigation, settling basins, or rice growing
- SWF-2025-00409-NON-JD ART.POND19 is a NON-JD - PREAMBLE - ART.LAKE.POND - Preamble water - Artificial lake/pond created by excavating/diking dry land, used exclusively for purposes such as stock watering, irrigation, settling basins, or rice growing
- SWF-2025-00410-NON-JD ART.POND20 is a NON-JD - PREAMBLE - ART.LAKE.POND - Preamble water - Artificial lake/pond created by

CESWF-RD

SUBJECT: Pre-2015 Regulatory Regime Approved Jurisdictional Determination in Light of *Sackett v. EPA*, 143 S. Ct. 1322 (2023), SWF-2025-00394

- excavating/diking dry land, used exclusively for purposes such as stock watering, irrigation, settling basins, or rice growing
 - SWF-2025-00411-NON-JD ART.POND26 is a NON-JD - PREAMBLE - ART.LAKE.POND - Preamble water - Artificial lake/pond created by excavating/diking dry land, used exclusively for purposes such as stock watering, irrigation, settling basins, or rice growing
 - SWF-2025-00412-NON-JD ART.POND27 is a NON-JD - PREAMBLE - ART.LAKE.POND - Preamble water - Artificial lake/pond created by excavating/diking dry land, used exclusively for purposes such as stock watering, irrigation, settling basins, or rice growing
 - SWF-2025-00413-NON-JD ART.POND28 is a NON-JD - PREAMBLE - ART.LAKE.POND - Preamble water - Artificial lake/pond created by excavating/diking dry land, used exclusively for purposes such as stock watering, irrigation, settling basins, or rice growing
 - SWF-2025-00414-NON-JD ART.POND29 is a NON-JD - PREAMBLE - ART.LAKE.POND - Preamble water - Artificial lake/pond created by excavating/diking dry land, used exclusively for purposes such as stock watering, irrigation, settling basins, or rice growing
- b. Describe aquatic resources and features within the review area identified as “generally not jurisdictional” in the *Rapanos* guidance. Include size of the aquatic resource or feature within the review area and describe how it was determined to be non-jurisdictional under the CWA based on the criteria listed in the guidance.
- S001, is a Rapanos Guidance - Swales or erosional features (e.g., gullies, small washes, characterized by low volume, infrequent, or short duration flow, that is 184 LF, that is an Unnamed Tributary to Jasper Creek, that is >10 Miles from nearest TNW, Lake Bridgeport
 - S002, is a Rapanos Guidance - Swales or erosional features (e.g., gullies, small washes, characterized by low volume, infrequent, or short duration flow, that is 211 LF, that is an Unnamed Tributary to Jasper Creek, that is >10 Miles from nearest TNW, Lake Bridgeport
 - S003, is a Rapanos Guidance - Swales or erosional features (e.g., gullies, small washes, characterized by low volume, infrequent, or short duration flow, that is 394 LF, that is an Unnamed Tributary to Jasper Creek, that is >10 Miles from nearest TNW, Lake Bridgeport
 - S004, is a Rapanos Guidance - Swales or erosional features (e.g., gullies, small washes, characterized by low volume, infrequent, or short duration flow, that is 589 LF, that is an Unnamed Tributary to Jasper Creek, that is >10 Miles from nearest TNW, Lake Bridgeport
 - S005, is a Rapanos Guidance - Swales or erosional features (e.g., gullies, small washes, characterized by low volume, infrequent, or short duration

- flow, that is 518 LF, that is an Unnamed Tributary to Jasper Creek, that is >10 Miles from nearest TNW, Lake Bridgeport
- S006, is a Rapanos Guidance - Swales or erosional features (e.g., gullies, small washes, characterized by low volume, infrequent, or short duration flow, that is 188 LF, that is an Unnamed Tributary to Jasper Creek, that is >10 Miles from nearest TNW, Lake Bridgeport
 - S007, is a Rapanos Guidance - Swales or erosional features (e.g., gullies, small washes, characterized by low volume, infrequent, or short duration flow, that is 338 LF, that is an Unnamed Tributary to Jasper Creek, that is >10 Miles from nearest TNW, Lake Bridgeport
 - S008, is a Rapanos Guidance - Swales or erosional features (e.g., gullies, small washes, characterized by low volume, infrequent, or short duration flow, that is 551 LF, that is an Unnamed Tributary to Jasper Creek, that is >10 Miles from nearest TNW, Lake Bridgeport
 - S009, is a Rapanos Guidance - Swales or erosional features (e.g., gullies, small washes, characterized by low volume, infrequent, or short duration flow, that is 196 LF, that is an Unnamed Tributary to Jasper Creek, that is >10 Miles from nearest TNW, Lake Bridgeport
 - S010, is a Rapanos Guidance - Swales or erosional features (e.g., gullies, small washes, characterized by low volume, infrequent, or short duration flow, that is 116 LF, that is an Unnamed Tributary to Jasper Creek, that is >10 Miles from nearest TNW, Lake Bridgeport
 - S011, is a Rapanos Guidance - Swales or erosional features (e.g., gullies, small washes, characterized by low volume, infrequent, or short duration flow, that is 51 LF, that is an Unnamed Tributary to Jasper Creek, that is >10 Miles from nearest TNW, Lake Bridgeport
 - S012, is a Rapanos Guidance - Swales or erosional features (e.g., gullies, small washes, characterized by low volume, infrequent, or short duration flow, that is 533 LF, that is an Unnamed Tributary to Boons Creek, that is >9 Miles from nearest TNW, Lake Bridgeport
 - S013, is a Rapanos Guidance - Swales or erosional features (e.g., gullies, small washes, characterized by low volume, infrequent, or short duration flow, that is 195 LF, that is an Unnamed Tributary to Boons Creek, that is >9 Miles from nearest TNW, Lake Bridgeport
 - S014, is a Rapanos Guidance - Swales or erosional features (e.g., gullies, small washes, characterized by low volume, infrequent, or short duration flow, that is 127 LF, that is an Unnamed Tributary to Boons Creek, that is >9 Miles from nearest TNW, Lake Bridgeport
 - S015, is a Rapanos Guidance - Swales or erosional features (e.g., gullies, small washes, characterized by low volume, infrequent, or short duration flow, that is 206 LF, that is an Unnamed Tributary to Boons Creek, that is >9 Miles from nearest TNW, Lake Bridgeport

CESWF-RD

SUBJECT: Pre-2015 Regulatory Regime Approved Jurisdictional Determination in Light of *Sackett v. EPA*, 143 S. Ct. 1322 (2023), SWF-2025-00394

- S016, is a Rapanos Guidance - Swales or erosional features (e.g., gullies, small washes, characterized by low volume, infrequent, or short duration flow, that is 124 LF, that is an Unnamed Tributary to Boons Creek, that is >9 Miles from nearest TNW, Lake Bridgeport
- S017, is a Rapanos Guidance - Swales or erosional features (e.g., gullies, small washes, characterized by low volume, infrequent, or short duration flow, that is 314 LF, that is an Unnamed Tributary to Hunt Creek, that is >8 Miles from nearest TNW, Lake Bridgeport
- S018, is a Rapanos Guidance - Swales or erosional features (e.g., gullies, small washes, characterized by low volume, infrequent, or short duration flow, that is 318 LF, that is an Unnamed Tributary to Hunt Creek, that is >8 Miles from nearest TNW, Lake Bridgeport
- S019, is a Rapanos Guidance - Swales or erosional features (e.g., gullies, small washes, characterized by low volume, infrequent, or short duration flow, that is 419 LF, that is an Unnamed Tributary to Hunt Creek, that is >8 Miles from nearest TNW, Lake Bridgeport
- S020, is a Rapanos Guidance - Swales or erosional features (e.g., gullies, small washes, characterized by low volume, infrequent, or short duration flow, that is 548 LF, that is an Unnamed Tributary to Hunt Creek, that is >8 Miles from nearest TNW, Lake Bridgeport
- S021, is a Rapanos Guidance - Swales or erosional features (e.g., gullies, small washes, characterized by low volume, infrequent, or short duration flow, that is 476 LF, that is an Unnamed Tributary to Hunt Creek, that is >8 Miles from nearest TNW, Lake Bridgeport
- S022, is a Rapanos Guidance - Swales or erosional features (e.g., gullies, small washes, characterized by low volume, infrequent, or short duration flow, that is 375 LF, that is an Unnamed Tributary to Jasper Creek, that is >10 Miles from nearest TNW, Lake Bridgeport
- S023, is a Rapanos Guidance - Swales or erosional features (e.g., gullies, small washes, characterized by low volume, infrequent, or short duration flow, that is 329 LF, that is an Unnamed Tributary to Jasper Creek, that is >10 Miles from nearest TNW, Lake Bridgeport
- S024, is a Rapanos Guidance - Swales or erosional features (e.g., gullies, small washes, characterized by low volume, infrequent, or short duration flow, that is 247 LF, that is an Unnamed Tributary to Jasper Creek, that is >10 Miles from nearest TNW, Lake Bridgeport
- S025, is a Rapanos Guidance - Swales or erosional features (e.g., gullies, small washes, characterized by low volume, infrequent, or short duration flow, that is 377 LF, that is an Unnamed Tributary to Jasper Creek, that is >10 Miles from nearest TNW, Lake Bridgeport
- S026, is a Rapanos Guidance - Swales or erosional features (e.g., gullies, small washes, characterized by low volume, infrequent, or short duration

CESWF-RD

SUBJECT: Pre-2015 Regulatory Regime Approved Jurisdictional Determination in Light of *Sackett v. EPA*, 143 S. Ct. 1322 (2023), SWF-2025-00394

- flow, that is 635 LF, that is an Unnamed Tributary to Jasper Creek, that is >10 Miles from nearest TNW, Lake Bridgeport
- S027, is a Rapanos Guidance - Swales or erosional features (e.g., gullies, small washes, characterized by low volume, infrequent, or short duration flow, that is 235 LF, that is an Unnamed Tributary to Jasper Creek, that is >10 Miles from nearest TNW, Lake Bridgeport
 - S028, is a Rapanos Guidance - Swales or erosional features (e.g., gullies, small washes, characterized by low volume, infrequent, or short duration flow, that is 316 LF, that is an Unnamed Tributary to Jasper Creek, that is >10 Miles from nearest TNW, Lake Bridgeport
 - S029, is a Rapanos Guidance - Swales or erosional features (e.g., gullies, small washes, characterized by low volume, infrequent, or short duration flow, that is 687 LF, that is an Unnamed Tributary to Jasper Creek, that is >10 Miles from nearest TNW, Lake Bridgeport
 - S030, is a Rapanos Guidance - Swales or erosional features (e.g., gullies, small washes, characterized by low volume, infrequent, or short duration flow, that is 171 LF, that is an Unnamed Tributary to Jasper Creek, that is >10 Miles from nearest TNW, Lake Bridgeport
 - S031, is a Rapanos Guidance - Swales or erosional features (e.g., gullies, small washes, characterized by low volume, infrequent, or short duration flow, that is 470 LF, that is an Unnamed Tributary to Jasper Creek, that is >10 Miles from nearest TNW, Lake Bridgeport
 - S032, is a Rapanos Guidance - Swales or erosional features (e.g., gullies, small washes, characterized by low volume, infrequent, or short duration flow, that is 202 LF, that is an Unnamed Tributary to Jasper Creek, that is >10 Miles from nearest TNW, Lake Bridgeport
 - S033, is a Rapanos Guidance - Swales or erosional features (e.g., gullies, small washes, characterized by low volume, infrequent, or short duration flow, that is 367 LF, that is an Unnamed Tributary to Jasper Creek, that is >10 Miles from nearest TNW, Lake Bridgeport
 - S034, is a Rapanos Guidance - Swales or erosional features (e.g., gullies, small washes, characterized by low volume, infrequent, or short duration flow, that is 253 LF, that is an Unnamed Tributary to Jasper Creek, that is >10 Miles from nearest TNW, Lake Bridgeport
 - S035, is a Rapanos Guidance - Swales or erosional features (e.g., gullies, small washes, characterized by low volume, infrequent, or short duration flow, that is 296 LF, that is an Unnamed Tributary to Jasper Creek, that is >10 Miles from nearest TNW, Lake Bridgeport
 - S036, is a Rapanos Guidance - Swales or erosional features (e.g., gullies, small washes, characterized by low volume, infrequent, or short duration flow, that is 194 LF, that is an Unnamed Tributary to Jasper Creek, that is >10 Miles from nearest TNW, Lake Bridgeport

CESWF-RD

SUBJECT: Pre-2015 Regulatory Regime Approved Jurisdictional Determination in Light of *Sackett v. EPA*, 143 S. Ct. 1322 (2023), SWF-2025-00394

- S037, is a Rapanos Guidance - Swales or erosional features (e.g., gullies, small washes, characterized by low volume, infrequent, or short duration flow, that is 149 LF, that is an Unnamed Tributary to Jasper Creek, that is >10 Miles from nearest TNW, Lake Bridgeport
- S038, is a Rapanos Guidance - Swales or erosional features (e.g., gullies, small washes, characterized by low volume, infrequent, or short duration flow, that is 244 LF, that is an Unnamed Tributary to Jasper Creek, that is >10 Miles from nearest TNW, Lake Bridgeport
- S039, is a Rapanos Guidance - Swales or erosional features (e.g., gullies, small washes, characterized by low volume, infrequent, or short duration flow, that is 300 LF, that is an Unnamed Tributary to Jasper Creek, that is >10 Miles from nearest TNW, Lake Bridgeport
- S040, is a Rapanos Guidance - Swales or erosional features (e.g., gullies, small washes, characterized by low volume, infrequent, or short duration flow, that is 179 LF, that is an Unnamed Tributary to Jasper Creek, that is >10 Miles from nearest TNW, Lake Bridgeport
- S041, is a Rapanos Guidance - Swales or erosional features (e.g., gullies, small washes, characterized by low volume, infrequent, or short duration flow, that is 63 LF, that is an Unnamed Tributary to Jasper Creek, that is >10 Miles from nearest TNW, Lake Bridgeport
- S042, is a Rapanos Guidance - Swales or erosional features (e.g., gullies, small washes, characterized by low volume, infrequent, or short duration flow, that is 176 LF, that is an Unnamed Tributary to Jasper Creek, that is >10 Miles from nearest TNW, Lake Bridgeport
- S043, is a Rapanos Guidance - Swales or erosional features (e.g., gullies, small washes, characterized by low volume, infrequent, or short duration flow, that is 688 LF, that is an Unnamed Tributary to Jasper Creek, that is >10 Miles from nearest TNW, Lake Bridgeport
- S044, is a Rapanos Guidance - Swales or erosional features (e.g., gullies, small washes, characterized by low volume, infrequent, or short duration flow, that is 345 LF, that is an Unnamed Tributary to Jasper Creek, that is >10 Miles from nearest TNW, Lake Bridgeport
- S045, is a Rapanos Guidance - Swales or erosional features (e.g., gullies, small washes, characterized by low volume, infrequent, or short duration flow, that is 81 LF, that is an Unnamed Tributary to Jasper Creek, that is >10 Miles from nearest TNW, Lake Bridgeport
- S046, is a Rapanos Guidance - Swales or erosional features (e.g., gullies, small washes, characterized by low volume, infrequent, or short duration flow, that is 62 LF, that is an Unnamed Tributary to Jasper Creek, that is >10 Miles from nearest TNW, Lake Bridgeport
- S047, is a Rapanos Guidance - Swales or erosional features (e.g., gullies, small washes, characterized by low volume, infrequent, or short duration

- flow, that is 331 LF, that is an Unnamed Tributary to Jasper Creek, that is >10 Miles from nearest TNW, Lake Bridgeport
- S048, is a Rapanos Guidance - Swales or erosional features (e.g., gullies, small washes, characterized by low volume, infrequent, or short duration flow, that is 114 LF, that is an Unnamed Tributary to Jasper Creek, that is >10 Miles from nearest TNW, Lake Bridgeport
 - S049, is a Rapanos Guidance - Swales or erosional features (e.g., gullies, small washes, characterized by low volume, infrequent, or short duration flow, that is 75 LF, that is an Unnamed Tributary to Jasper Creek, that is >10 Miles from nearest TNW, Lake Bridgeport
 - S050, is a Rapanos Guidance - Swales or erosional features (e.g., gullies, small washes, characterized by low volume, infrequent, or short duration flow, that is 641 LF, that is an Unnamed Tributary to Jasper Creek, that is >10 Miles from nearest TNW, Lake Bridgeport
 - S051, is a Rapanos Guidance - Swales or erosional features (e.g., gullies, small washes, characterized by low volume, infrequent, or short duration flow, that is 459 LF, that is an Unnamed Tributary to Jasper Creek, that is >10 Miles from nearest TNW, Lake Bridgeport
 - S052, is a Rapanos Guidance - Swales or erosional features (e.g., gullies, small washes, characterized by low volume, infrequent, or short duration flow, that is 178 LF, that is an Unnamed Tributary to Jasper Creek, that is >10 Miles from nearest TNW, Lake Bridgeport
 - S053, is a Rapanos Guidance - Swales or erosional features (e.g., gullies, small washes, characterized by low volume, infrequent, or short duration flow, that is 119 LF, that is an Unnamed Tributary to Jasper Creek, that is >10 Miles from nearest TNW, Lake Bridgeport
 - S054, is a Rapanos Guidance - Swales or erosional features (e.g., gullies, small washes, characterized by low volume, infrequent, or short duration flow, that is 492 LF, that is an Unnamed Tributary to Jasper Creek, that is >10 Miles from nearest TNW, Lake Bridgeport
 - S055, is a Rapanos Guidance - Swales or erosional features (e.g., gullies, small washes, characterized by low volume, infrequent, or short duration flow, that is 155 LF, that is an Unnamed Tributary to Jasper Creek, that is >10 Miles from nearest TNW, Lake Bridgeport
 - S056, is a Rapanos Guidance - Swales or erosional features (e.g., gullies, small washes, characterized by low volume, infrequent, or short duration flow, that is 224 LF, that is an Unnamed Tributary to Jasper Creek, that is >10 Miles from nearest TNW, Lake Bridgeport
 - S057, is a Rapanos Guidance - Swales or erosional features (e.g., gullies, small washes, characterized by low volume, infrequent, or short duration flow, that is 597 LF, that is an Unnamed Tributary to Jasper Creek, that is >10 Miles from nearest TNW, Lake Bridgeport

CESWF-RD

SUBJECT: Pre-2015 Regulatory Regime Approved Jurisdictional Determination in Light of *Sackett v. EPA*, 143 S. Ct. 1322 (2023), SWF-2025-00394

- S058, is a Rapanos Guidance - Swales or erosional features (e.g., gullies, small washes, characterized by low volume, infrequent, or short duration flow, that is 99 LF, that is an Unnamed Tributary to Jasper Creek, that is >10 Miles from nearest TNW, Lake Bridgeport
- S059, is a Rapanos Guidance - Swales or erosional features (e.g., gullies, small washes, characterized by low volume, infrequent, or short duration flow, that is 262 LF, that is an Unnamed Tributary to Jasper Creek, that is >10 Miles from nearest TNW, Lake Bridgeport
- S060, is a Rapanos Guidance - Swales or erosional features (e.g., gullies, small washes, characterized by low volume, infrequent, or short duration flow, that is 201 LF, that is an Unnamed Tributary to Jasper Creek, that is >10 Miles from nearest TNW, Lake Bridgeport
- S061, is a Rapanos Guidance - Swales or erosional features (e.g., gullies, small washes, characterized by low volume, infrequent, or short duration flow, that is 74 LF, that is an Unnamed Tributary to Jasper Creek, that is >10 Miles from nearest TNW, Lake Bridgeport
- S062, is a Rapanos Guidance - Swales or erosional features (e.g., gullies, small washes, characterized by low volume, infrequent, or short duration flow, that is 213 LF, that is an Unnamed Tributary to Jasper Creek, that is >10 Miles from nearest TNW, Lake Bridgeport
- S063, is a Rapanos Guidance - Swales or erosional features (e.g., gullies, small washes, characterized by low volume, infrequent, or short duration flow, that is 246 LF, that is an Unnamed Tributary to Jasper Creek, that is >10 Miles from nearest TNW, Lake Bridgeport
- S064, is a Rapanos Guidance - Swales or erosional features (e.g., gullies, small washes, characterized by low volume, infrequent, or short duration flow, that is 232 LF, that is an Unnamed Tributary to Jasper Creek, that is >10 Miles from nearest TNW, Lake Bridgeport
- S065, is a Rapanos Guidance - Swales or erosional features (e.g., gullies, small washes, characterized by low volume, infrequent, or short duration flow, that is 612 LF, that is an Unnamed Tributary to Jasper Creek, that is >10 Miles from nearest TNW, Lake Bridgeport
- S066, is a Rapanos Guidance - Swales or erosional features (e.g., gullies, small washes, characterized by low volume, infrequent, or short duration flow, that is 192 LF, that is an Unnamed Tributary to Jasper Creek, that is >10 Miles from nearest TNW, Lake Bridgeport
- S067, is a Rapanos Guidance - Swales or erosional features (e.g., gullies, small washes, characterized by low volume, infrequent, or short duration flow, that is 811 LF, that is an Unnamed Tributary to Jasper Creek, that is >10 Miles from nearest TNW, Lake Bridgeport
- S068, is a Rapanos Guidance - Swales or erosional features (e.g., gullies, small washes, characterized by low volume, infrequent, or short duration

- flow, that is 456 LF, that is an Unnamed Tributary to Jasper Creek, that is >10 Miles from nearest TNW, Lake Bridgeport
- S069, is a Rapanos Guidance - Swales or erosional features (e.g., gullies, small washes, characterized by low volume, infrequent, or short duration flow, that is 477 LF, that is an Unnamed Tributary to Jasper Creek, that is >10 Miles from nearest TNW, Lake Bridgeport
 - S070, is a Rapanos Guidance - Swales or erosional features (e.g., gullies, small washes, characterized by low volume, infrequent, or short duration flow, that is 167 LF, that is an Unnamed Tributary to Jasper Creek, that is >10 Miles from nearest TNW, Lake Bridgeport
 - S071, is a Rapanos Guidance - Swales or erosional features (e.g., gullies, small washes, characterized by low volume, infrequent, or short duration flow, that is 193 LF, that is an Unnamed Tributary to Jasper Creek, that is >10 Miles from nearest TNW, Lake Bridgeport
 - S072, is a Rapanos Guidance - Swales or erosional features (e.g., gullies, small washes, characterized by low volume, infrequent, or short duration flow, that is 212 LF, that is an Unnamed Tributary to Jasper Creek, that is >10 Miles from nearest TNW, Lake Bridgeport
 - S073, is a Rapanos Guidance - Swales or erosional features (e.g., gullies, small washes, characterized by low volume, infrequent, or short duration flow, that is 111 LF, that is an Unnamed Tributary to Jasper Creek, that is >10 Miles from nearest TNW, Lake Bridgeport
 - S074, is a Rapanos Guidance - Swales or erosional features (e.g., gullies, small washes, characterized by low volume, infrequent, or short duration flow, that is 79 LF, that is an Unnamed Tributary to Jasper Creek, that is >10 Miles from nearest TNW, Lake Bridgeport
 - S075, is a Rapanos Guidance - Swales or erosional features (e.g., gullies, small washes, characterized by low volume, infrequent, or short duration flow, that is 84 LF, that is an Unnamed Tributary to Jasper Creek, that is >10 Miles from nearest TNW, Lake Bridgeport
 - S076, is a Rapanos Guidance - Swales or erosional features (e.g., gullies, small washes, characterized by low volume, infrequent, or short duration flow, that is 332 LF, that is an Unnamed Tributary to Boons Creek, that is >9 Miles from nearest TNW, Lake Bridgeport
 - S077, is a Rapanos Guidance - Swales or erosional features (e.g., gullies, small washes, characterized by low volume, infrequent, or short duration flow, that is 843 LF, that is an Unnamed Tributary to Boons Creek, that is >9 Miles from nearest TNW, Lake Bridgeport
 - S078, is a Rapanos Guidance - Swales or erosional features (e.g., gullies, small washes, characterized by low volume, infrequent, or short duration flow, that is 503 LF, that is an Unnamed Tributary to Boons Creek, that is >9 Miles from nearest TNW, Lake Bridgeport

CESWF-RD

SUBJECT: Pre-2015 Regulatory Regime Approved Jurisdictional Determination in Light of *Sackett v. EPA*, 143 S. Ct. 1322 (2023), SWF-2025-00394

- S079, is a Rapanos Guidance - Swales or erosional features (e.g., gullies, small washes, characterized by low volume, infrequent, or short duration flow, that is 399 LF, that is an Unnamed Tributary to Boons Creek, that is >9 Miles from nearest TNW, Lake Bridgeport
- S080, is a Rapanos Guidance - Swales or erosional features (e.g., gullies, small washes, characterized by low volume, infrequent, or short duration flow, that is 98 LF, that is an Unnamed Tributary to Boons Creek, that is >9 Miles from nearest TNW, Lake Bridgeport
- S081, is a Rapanos Guidance - Swales or erosional features (e.g., gullies, small washes, characterized by low volume, infrequent, or short duration flow, that is 314 LF, that is an Unnamed Tributary to Boons Creek, that is >9 Miles from nearest TNW, Lake Bridgeport
- S082, is a Rapanos Guidance - Swales or erosional features (e.g., gullies, small washes, characterized by low volume, infrequent, or short duration flow, that is 217 LF, that is an Unnamed Tributary to Boons Creek, that is >9 Miles from nearest TNW, Lake Bridgeport
- S083, is a Rapanos Guidance - Swales or erosional features (e.g., gullies, small washes, characterized by low volume, infrequent, or short duration flow, that is 82 LF, that is an Unnamed Tributary to Boons Creek, that is >9 Miles from nearest TNW, Lake Bridgeport
- S084, is a Rapanos Guidance - Swales or erosional features (e.g., gullies, small washes, characterized by low volume, infrequent, or short duration flow, that is 215 LF, that is an Unnamed Tributary to Jasper Creek, that is >10 Miles from nearest TNW, Lake Bridgeport
- S085, is a Rapanos Guidance - Swales or erosional features (e.g., gullies, small washes, characterized by low volume, infrequent, or short duration flow, that is 285 LF, that is an Unnamed Tributary to Jasper Creek, that is >10 Miles from nearest TNW, Lake Bridgeport
- S086, is a Rapanos Guidance - Swales or erosional features (e.g., gullies, small washes, characterized by low volume, infrequent, or short duration flow, that is 239 LF, that is an Unnamed Tributary to Jasper Creek, that is >10 Miles from nearest TNW, Lake Bridgeport
- S087, is a Rapanos Guidance - Swales or erosional features (e.g., gullies, small washes, characterized by low volume, infrequent, or short duration flow, that is 74 LF, that is an , that is >10 Miles from nearest TNW, Lake Bridgeport
- S088, is a Rapanos Guidance - Swales or erosional features (e.g., gullies, small washes, characterized by low volume, infrequent, or short duration flow, that is 298 LF, that is an Unnamed Tributary to Jasper Creek, that is >10 Miles from nearest TNW, Lake Bridgeport
- S089, is a Rapanos Guidance - Swales or erosional features (e.g., gullies, small washes, characterized by low volume, infrequent, or short duration

CESWF-RD

SUBJECT: Pre-2015 Regulatory Regime Approved Jurisdictional Determination in Light of *Sackett v. EPA*, 143 S. Ct. 1322 (2023), SWF-2025-00394

- flow, that is 498 LF, that is an Unnamed Tributary to Jasper Creek, that is >10 Miles from nearest TNW, Lake Bridgeport
- S090, is a Rapanos Guidance - Swales or erosional features (e.g., gullies, small washes, characterized by low volume, infrequent, or short duration flow, that is 113 LF, that is an Unnamed Tributary to Jasper Creek, that is >10 Miles from nearest TNW, Lake Bridgeport
 - S091, is a Rapanos Guidance - Swales or erosional features (e.g., gullies, small washes, characterized by low volume, infrequent, or short duration flow, that is 118 LF, that is an Unnamed Tributary to Jasper Creek, that is >10 Miles from nearest TNW, Lake Bridgeport
 - S092, is a Rapanos Guidance - Swales or erosional features (e.g., gullies, small washes, characterized by low volume, infrequent, or short duration flow, that is 161 LF, that is an Unnamed Tributary to Jasper Creek, that is >10 Miles from nearest TNW, Lake Bridgeport
 - S093, is a Rapanos Guidance - Swales or erosional features (e.g., gullies, small washes, characterized by low volume, infrequent, or short duration flow, that is 191 LF, that is an Unnamed Tributary to Jasper Creek, that is >10 Miles from nearest TNW, Lake Bridgeport
 - S094, is a Rapanos Guidance - Swales or erosional features (e.g., gullies, small washes, characterized by low volume, infrequent, or short duration flow, that is 115 LF, that is an Unnamed Tributary to Jasper Creek, that is >10 Miles from nearest TNW, Lake Bridgeport
 - S095, is a Rapanos Guidance - Swales or erosional features (e.g., gullies, small washes, characterized by low volume, infrequent, or short duration flow, that is 310 LF, that is an Unnamed Tributary to Jasper Creek, that is >10 Miles from nearest TNW, Lake Bridgeport
 - S096, is a Rapanos Guidance - Swales or erosional features (e.g., gullies, small washes, characterized by low volume, infrequent, or short duration flow, that is 101 LF, that is an Unnamed Tributary to Jasper Creek, that is >10 Miles from nearest TNW, Lake Bridgeport
 - S097, is a Rapanos Guidance - Swales or erosional features (e.g., gullies, small washes, characterized by low volume, infrequent, or short duration flow, that is 184 LF, that is an Unnamed Tributary to Jasper Creek, that is >10 Miles from nearest TNW, Lake Bridgeport
 - S098, is a Rapanos Guidance - Swales or erosional features (e.g., gullies, small washes, characterized by low volume, infrequent, or short duration flow, that is 147 LF, that is an Unnamed Tributary to Jasper Creek, that is >10 Miles from nearest TNW, Lake Bridgeport
 - S099, is a Rapanos Guidance - Swales or erosional features (e.g., gullies, small washes, characterized by low volume, infrequent, or short duration flow, that is 581 LF, that is an Unnamed Tributary to Jasper Creek, that is >10 Miles from nearest TNW, Lake Bridgeport

CESWF-RD

SUBJECT: Pre-2015 Regulatory Regime Approved Jurisdictional Determination in Light of *Sackett v. EPA*, 143 S. Ct. 1322 (2023), SWF-2025-00394

- S100, is a Rapanos Guidance - Swales or erosional features (e.g., gullies, small washes, characterized by low volume, infrequent, or short duration flow, that is 603 LF, that is an Unnamed Tributary to Jasper Creek, that is >10 Miles from nearest TNW, Lake Bridgeport
- S101, is a Rapanos Guidance - Swales or erosional features (e.g., gullies, small washes, characterized by low volume, infrequent, or short duration flow, that is 283 LF, that is an Unnamed Tributary to Jasper Creek, that is >10 Miles from nearest TNW, Lake Bridgeport
- S102, is a Rapanos Guidance - Swales or erosional features (e.g., gullies, small washes, characterized by low volume, infrequent, or short duration flow, that is 257 LF, that is an Unnamed Tributary to Jasper Creek, that is >10 Miles from nearest TNW, Lake Bridgeport
- S103, is a Rapanos Guidance - Swales or erosional features (e.g., gullies, small washes, characterized by low volume, infrequent, or short duration flow, that is 190 LF, that is an Unnamed Tributary to Jasper Creek, that is >10 Miles from nearest TNW, Lake Bridgeport
- S104, is a Rapanos Guidance - Swales or erosional features (e.g., gullies, small washes, characterized by low volume, infrequent, or short duration flow, that is 348 LF, that is an Unnamed Tributary to Jasper Creek, that is >10 Miles from nearest TNW, Lake Bridgeport
- S105, is a Rapanos Guidance - Swales or erosional features (e.g., gullies, small washes, characterized by low volume, infrequent, or short duration flow, that is 519 LF, that is an Unnamed Tributary to Jasper Creek, that is >10 Miles from nearest TNW, Lake Bridgeport
- S106, is a Rapanos Guidance - Swales or erosional features (e.g., gullies, small washes, characterized by low volume, infrequent, or short duration flow, that is 225 LF, that is an Unnamed Tributary to Jasper Creek, that is >10 Miles from nearest TNW, Lake Bridgeport
- S107, is a Rapanos Guidance - Swales or erosional features (e.g., gullies, small washes, characterized by low volume, infrequent, or short duration flow, that is 79 LF, that is an Unnamed Tributary to Jasper Creek, that is >10 Miles from nearest TNW, Lake Bridgeport
- S108, is a Rapanos Guidance - Swales or erosional features (e.g., gullies, small washes, characterized by low volume, infrequent, or short duration flow, that is 89 LF, that is an Unnamed Tributary to Jasper Creek, that is >10 Miles from nearest TNW, Lake Bridgeport
- S109, is a Rapanos Guidance - Swales or erosional features (e.g., gullies, small washes, characterized by low volume, infrequent, or short duration flow, that is 888 LF, that is an Unnamed Tributary to Jasper Creek, that is >10 Miles from nearest TNW, Lake Bridgeport
- S110, is a Rapanos Guidance - Swales or erosional features (e.g., gullies, small washes, characterized by low volume, infrequent, or short duration

- flow, that is 432 LF, that is an Unnamed Tributary to Jasper Creek, that is >10 Miles from nearest TNW, Lake Bridgeport
- S111, is a Rapanos Guidance - Swales or erosional features (e.g., gullies, small washes, characterized by low volume, infrequent, or short duration flow, that is 263 LF, that is an Unnamed Tributary to Jasper Creek, that is >10 Miles from nearest TNW, Lake Bridgeport
 - S112, is a Rapanos Guidance - Swales or erosional features (e.g., gullies, small washes, characterized by low volume, infrequent, or short duration flow, that is 625 LF, that is an Unnamed Tributary to Jasper Creek, that is >10 Miles from nearest TNW, Lake Bridgeport
 - S113, is a Rapanos Guidance - Swales or erosional features (e.g., gullies, small washes, characterized by low volume, infrequent, or short duration flow, that is 707 LF, that is an Unnamed Tributary to Jasper Creek, that is >10 Miles from nearest TNW, Lake Bridgeport
 - S114, is a Rapanos Guidance - Swales or erosional features (e.g., gullies, small washes, characterized by low volume, infrequent, or short duration flow, that is 437 LF, that is an Unnamed Tributary to Jasper Creek, that is >10 Miles from nearest TNW, Lake Bridgeport
 - S115, is a Rapanos Guidance - Swales or erosional features (e.g., gullies, small washes, characterized by low volume, infrequent, or short duration flow, that is 225 LF, that is an Unnamed Tributary to Jasper Creek, that is >10 Miles from nearest TNW, Lake Bridgeport
 - S116, is a Rapanos Guidance - Swales or erosional features (e.g., gullies, small washes, characterized by low volume, infrequent, or short duration flow, that is 178 LF, that is an Unnamed Tributary to Jasper Creek, that is >10 Miles from nearest TNW, Lake Bridgeport
 - S117, is a Rapanos Guidance - Swales or erosional features (e.g., gullies, small washes, characterized by low volume, infrequent, or short duration flow, that is 485 LF, that is an Unnamed Tributary to Boons Creek, that is >9 Miles from nearest TNW, Lake Bridgeport
 - S118, is a Rapanos Guidance - Swales or erosional features (e.g., gullies, small washes, characterized by low volume, infrequent, or short duration flow, that is 743 LF, that is an Unnamed Tributary to Jasper Creek, that is >10 Miles from nearest TNW, Lake Bridgeport
 - S119, is a Rapanos Guidance - Swales or erosional features (e.g., gullies, small washes, characterized by low volume, infrequent, or short duration flow, that is 296 LF, that is an Unnamed Tributary to Jasper Creek, that is >10 Miles from nearest TNW, Lake Bridgeport
 - S120, is a Rapanos Guidance - Swales or erosional features (e.g., gullies, small washes, characterized by low volume, infrequent, or short duration flow, that is 1139 LF, that is an Unnamed Tributary to Jasper Creek, that is >10 Miles from nearest TNW, Lake Bridgeport

CESWF-RD

SUBJECT: Pre-2015 Regulatory Regime Approved Jurisdictional Determination in Light of *Sackett v. EPA*, 143 S. Ct. 1322 (2023), SWF-2025-00394

- S121, is a Rapanos Guidance - Swales or erosional features (e.g., gullies, small washes, characterized by low volume, infrequent, or short duration flow, that is 244 LF, that is an Unnamed Tributary to Jasper Creek, that is >10 Miles from nearest TNW, Lake Bridgeport
- S122, is a Rapanos Guidance - Swales or erosional features (e.g., gullies, small washes, characterized by low volume, infrequent, or short duration flow, that is 207 LF, that is an Unnamed Tributary to Jasper Creek, that is >10 Miles from nearest TNW, Lake Bridgeport
- S123, is a Rapanos Guidance - Swales or erosional features (e.g., gullies, small washes, characterized by low volume, infrequent, or short duration flow, that is 189 LF, that is an Unnamed Tributary to Jasper Creek, that is >10 Miles from nearest TNW, Lake Bridgeport
- S124, is a Rapanos Guidance - Swales or erosional features (e.g., gullies, small washes, characterized by low volume, infrequent, or short duration flow, that is 270 LF, that is an Unnamed Tributary to Jasper Creek, that is >10 Miles from nearest TNW, Lake Bridgeport
- S125, is a Rapanos Guidance - Swales or erosional features (e.g., gullies, small washes, characterized by low volume, infrequent, or short duration flow, that is 49 LF, that is an Unnamed Tributary to Jasper Creek, that is >10 Miles from nearest TNW, Lake Bridgeport
- S126, is a Rapanos Guidance - Swales or erosional features (e.g., gullies, small washes, characterized by low volume, infrequent, or short duration flow, that is 95 LF, that is an Unnamed Tributary to Jasper Creek, that is >10 Miles from nearest TNW, Lake Bridgeport
- S127, is a Rapanos Guidance - Swales or erosional features (e.g., gullies, small washes, characterized by low volume, infrequent, or short duration flow, that is 269 LF, that is an Unnamed Tributary to Jasper Creek, that is >10 Miles from nearest TNW, Lake Bridgeport
- S128, is a Rapanos Guidance - Swales or erosional features (e.g., gullies, small washes, characterized by low volume, infrequent, or short duration flow, that is 142 LF, that is an Unnamed Tributary to Jasper Creek, that is >10 Miles from nearest TNW, Lake Bridgeport
- S129, is a Rapanos Guidance - Swales or erosional features (e.g., gullies, small washes, characterized by low volume, infrequent, or short duration flow, that is 97 LF, that is an Unnamed Tributary to Jasper Creek, that is >10 Miles from nearest TNW, Lake Bridgeport
- S130, is a Rapanos Guidance - Swales or erosional features (e.g., gullies, small washes, characterized by low volume, infrequent, or short duration flow, that is 1053 LF, that is an Unnamed Tributary to Jasper Creek, that is >10 Miles from nearest TNW, Lake Bridgeport
- S131, is a Rapanos Guidance - Swales or erosional features (e.g., gullies, small washes, characterized by low volume, infrequent, or short duration

- flow, that is 314 LF, that is an Unnamed Tributary to Jasper Creek, that is >10 Miles from nearest TNW, Lake Bridgeport
- S132, is a Rapanos Guidance - Swales or erosional features (e.g., gullies, small washes, characterized by low volume, infrequent, or short duration flow, that is 202 LF, that is an Unnamed Tributary to Jasper Creek, that is >10 Miles from nearest TNW, Lake Bridgeport
 - S133, is a Rapanos Guidance - Swales or erosional features (e.g., gullies, small washes, characterized by low volume, infrequent, or short duration flow, that is 197 LF, that is an Unnamed Tributary to Jasper Creek, that is >10 Miles from nearest TNW, Lake Bridgeport
 - S134, is a Rapanos Guidance - Swales or erosional features (e.g., gullies, small washes, characterized by low volume, infrequent, or short duration flow, that is 1098 LF, that is an Unnamed Tributary to Jasper Creek, that is >10 Miles from nearest TNW, Lake Bridgeport
 - S135, is a Rapanos Guidance - Swales or erosional features (e.g., gullies, small washes, characterized by low volume, infrequent, or short duration flow, that is 663 LF, that is an Unnamed Tributary to Jasper Creek, that is >10 Miles from nearest TNW, Lake Bridgeport
 - S136, is a Rapanos Guidance - Swales or erosional features (e.g., gullies, small washes, characterized by low volume, infrequent, or short duration flow, that is 377 LF, that is an Unnamed Tributary to Jasper Creek, that is >10 Miles from nearest TNW, Lake Bridgeport
 - S137, is a Rapanos Guidance - Swales or erosional features (e.g., gullies, small washes, characterized by low volume, infrequent, or short duration flow, that is 239 LF, that is an Unnamed Tributary to Jasper Creek, that is >10 Miles from nearest TNW, Lake Bridgeport
 - S138, is a Rapanos Guidance - Swales or erosional features (e.g., gullies, small washes, characterized by low volume, infrequent, or short duration flow, that is 310 LF, that is an Unnamed Tributary to Jasper Creek, that is >10 Miles from nearest TNW, Lake Bridgeport
 - S139, is a Rapanos Guidance - Swales or erosional features (e.g., gullies, small washes, characterized by low volume, infrequent, or short duration flow, that is 197 LF, that is an Unnamed Tributary to Jasper Creek, that is >10 Miles from nearest TNW, Lake Bridgeport
 - S140, is a Rapanos Guidance - Swales or erosional features (e.g., gullies, small washes, characterized by low volume, infrequent, or short duration flow, that is 884 LF, that is an Unnamed Tributary to Jasper Creek, that is >10 Miles from nearest TNW, Lake Bridgeport
 - S141, is a Rapanos Guidance - Swales or erosional features (e.g., gullies, small washes, characterized by low volume, infrequent, or short duration flow, that is 266 LF, that is an Unnamed Tributary to Jasper Creek, that is >10 Miles from nearest TNW, Lake Bridgeport

CESWF-RD

SUBJECT: Pre-2015 Regulatory Regime Approved Jurisdictional Determination in Light of *Sackett v. EPA*, 143 S. Ct. 1322 (2023), SWF-2025-00394

- S142, is a Rapanos Guidance - Swales or erosional features (e.g., gullies, small washes, characterized by low volume, infrequent, or short duration flow, that is 318 LF, that is an Unnamed Tributary to Jasper Creek, that is >10 Miles from nearest TNW, Lake Bridgeport
- S143, is a Rapanos Guidance - Swales or erosional features (e.g., gullies, small washes, characterized by low volume, infrequent, or short duration flow, that is 199 LF, that is an Unnamed Tributary to Jasper Creek, that is >10 Miles from nearest TNW, Lake Bridgeport
- S144, is a Rapanos Guidance - Swales or erosional features (e.g., gullies, small washes, characterized by low volume, infrequent, or short duration flow, that is 158 LF, that is an Unnamed Tributary to Jasper Creek, that is >10 Miles from nearest TNW, Lake Bridgeport
- S145, is a Rapanos Guidance - Swales or erosional features (e.g., gullies, small washes, characterized by low volume, infrequent, or short duration flow, that is 837 LF, that is an Unnamed Tributary to Jasper Creek, that is >10 Miles from nearest TNW, Lake Bridgeport
- S146, is a Rapanos Guidance - Swales or erosional features (e.g., gullies, small washes, characterized by low volume, infrequent, or short duration flow, that is 287 LF, that is an Unnamed Tributary to Jasper Creek, that is >10 Miles from nearest TNW, Lake Bridgeport
- S147, is a Rapanos Guidance - Swales or erosional features (e.g., gullies, small washes, characterized by low volume, infrequent, or short duration flow, that is 254 LF, that is an Unnamed Tributary to Jasper Creek, that is >10 Miles from nearest TNW, Lake Bridgeport
- S148, is a Rapanos Guidance - Swales or erosional features (e.g., gullies, small washes, characterized by low volume, infrequent, or short duration flow, that is 766 LF, that is an Unnamed Tributary to Jasper Creek, that is >10 Miles from nearest TNW, Lake Bridgeport
- S149, is a Rapanos Guidance - Swales or erosional features (e.g., gullies, small washes, characterized by low volume, infrequent, or short duration flow, that is 103 LF, that is an Unnamed Tributary to Jasper Creek, that is >10 Miles from nearest TNW, Lake Bridgeport
- S150, is a Rapanos Guidance - Swales or erosional features (e.g., gullies, small washes, characterized by low volume, infrequent, or short duration flow, that is 105 LF, that is an Unnamed Tributary to Jasper Creek, that is >10 Miles from nearest TNW, Lake Bridgeport
- S151, is a Rapanos Guidance - Swales or erosional features (e.g., gullies, small washes, characterized by low volume, infrequent, or short duration flow, that is 581 LF, that is an Unnamed Tributary to Hunt Creek, that is >8 Miles from nearest TNW, Lake Bridgeport
- S152, is a Rapanos Guidance - Swales or erosional features (e.g., gullies, small washes, characterized by low volume, infrequent, or short duration

- flow, that is 333 LF, that is an Unnamed Tributary to Hunt Creek, that is >8 Miles from nearest TNW, Lake Bridgeport
- S153, is a Rapanos Guidance - Swales or erosional features (e.g., gullies, small washes, characterized by low volume, infrequent, or short duration flow, that is 384 LF, that is an Unnamed Tributary to Hunt Creek, that is >8 Miles from nearest TNW, Lake Bridgeport
 - S154, is a Rapanos Guidance - Swales or erosional features (e.g., gullies, small washes, characterized by low volume, infrequent, or short duration flow, that is 312 LF, that is an Unnamed Tributary to Hunt Creek, that is >8 Miles from nearest TNW, Lake Bridgeport
 - S155, is a Rapanos Guidance - Swales or erosional features (e.g., gullies, small washes, characterized by low volume, infrequent, or short duration flow, that is 242 LF, that is an Unnamed Tributary to Hunt Creek, that is >8 Miles from nearest TNW, Lake Bridgeport
 - S156, is a Rapanos Guidance - Swales or erosional features (e.g., gullies, small washes, characterized by low volume, infrequent, or short duration flow, that is 234 LF, that is an Unnamed Tributary to Hunt Creek, that is >8 Miles from nearest TNW, Lake Bridgeport
 - S157, is a Rapanos Guidance - Swales or erosional features (e.g., gullies, small washes, characterized by low volume, infrequent, or short duration flow, that is 143 LF, that is an Unnamed Tributary to Hunt Creek, that is >8 Miles from nearest TNW, Lake Bridgeport
 - S158, is a Rapanos Guidance - Swales or erosional features (e.g., gullies, small washes, characterized by low volume, infrequent, or short duration flow, that is 370 LF, that is an Unnamed Tributary to Hunt Creek, that is >8 Miles from nearest TNW, Lake Bridgeport
 - S159, is a Rapanos Guidance - Swales or erosional features (e.g., gullies, small washes, characterized by low volume, infrequent, or short duration flow, that is 654 LF, that is an Unnamed Tributary to Hunt Creek, that is >8 Miles from nearest TNW, Lake Bridgeport
 - S160, is a Rapanos Guidance - Swales or erosional features (e.g., gullies, small washes, characterized by low volume, infrequent, or short duration flow, that is 779 LF, that is an Unnamed Tributary to Hunt Creek, that is >8 Miles from nearest TNW, Lake Bridgeport
 - S161, is a Rapanos Guidance - Swales or erosional features (e.g., gullies, small washes, characterized by low volume, infrequent, or short duration flow, that is 174 LF, that is an Unnamed Tributary to Hunt Creek, that is >8 Miles from nearest TNW, Lake Bridgeport
 - S162, is a Rapanos Guidance - Swales or erosional features (e.g., gullies, small washes, characterized by low volume, infrequent, or short duration flow, that is 137 LF, that is an Unnamed Tributary to Hunt Creek, that is >8 Miles from nearest TNW, Lake Bridgeport

CESWF-RD

SUBJECT: Pre-2015 Regulatory Regime Approved Jurisdictional Determination in Light of *Sackett v. EPA*, 143 S. Ct. 1322 (2023), SWF-2025-00394

- S163, is a Rapanos Guidance - Swales or erosional features (e.g., gullies, small washes, characterized by low volume, infrequent, or short duration flow, that is 104 LF, that is an Unnamed Tributary to Hunt Creek, that is >8 Miles from nearest TNW, Lake Bridgeport
- S164, is a Rapanos Guidance - Swales or erosional features (e.g., gullies, small washes, characterized by low volume, infrequent, or short duration flow, that is 133 LF, that is an Unnamed Tributary to Hunt Creek, that is >8 Miles from nearest TNW, Lake Bridgeport
- S165, is a Rapanos Guidance - Swales or erosional features (e.g., gullies, small washes, characterized by low volume, infrequent, or short duration flow, that is 124 LF, that is an Unnamed Tributary to Jasper Creek, that is >10 Miles from nearest TNW, Lake Bridgeport
- S166, is a Rapanos Guidance - Swales or erosional features (e.g., gullies, small washes, characterized by low volume, infrequent, or short duration flow, that is 169 LF, that is an Unnamed Tributary to Jasper Creek, that is >10 Miles from nearest TNW, Lake Bridgeport
- S167, is a Rapanos Guidance - Swales or erosional features (e.g., gullies, small washes, characterized by low volume, infrequent, or short duration flow, that is 223 LF, that is an Unnamed Tributary to Jasper Creek, that is >10 Miles from nearest TNW, Lake Bridgeport
- S168, is a Rapanos Guidance - Swales or erosional features (e.g., gullies, small washes, characterized by low volume, infrequent, or short duration flow, that is 128 LF, that is an Unnamed Tributary to Jasper Creek, that is >10 Miles from nearest TNW, Lake Bridgeport
- S169, is a Rapanos Guidance - Swales or erosional features (e.g., gullies, small washes, characterized by low volume, infrequent, or short duration flow, that is 55 LF, that is an Unnamed Tributary to Jasper Creek, that is >10 Miles from nearest TNW, Lake Bridgeport
- S170, is a Rapanos Guidance - Swales or erosional features (e.g., gullies, small washes, characterized by low volume, infrequent, or short duration flow, that is 120 LF, that is an Unnamed Tributary to Jasper Creek, that is >10 Miles from nearest TNW, Lake Bridgeport
- S171, is a Rapanos Guidance - Swales or erosional features (e.g., gullies, small washes, characterized by low volume, infrequent, or short duration flow, that is 209 LF, that is an Unnamed Tributary to Jasper Creek, that is >10 Miles from nearest TNW, Lake Bridgeport
- S172, is a Rapanos Guidance - Swales or erosional features (e.g., gullies, small washes, characterized by low volume, infrequent, or short duration flow, that is 175 LF, that is an Unnamed Tributary to Jasper Creek, that is >10 Miles from nearest TNW, Lake Bridgeport
- S173, is a Rapanos Guidance - Swales or erosional features (e.g., gullies, small washes, characterized by low volume, infrequent, or short duration

- flow, that is 110 LF, that is an Unnamed Tributary to Jasper Creek, that is >10 Miles from nearest TNW, Lake Bridgeport
- S174, is a Rapanos Guidance - Swales or erosional features (e.g., gullies, small washes, characterized by low volume, infrequent, or short duration flow, that is 142 LF, that is an Unnamed Tributary to Jasper Creek, that is >10 Miles from nearest TNW, Lake Bridgeport
 - S175, is a Rapanos Guidance - Swales or erosional features (e.g., gullies, small washes, characterized by low volume, infrequent, or short duration flow, that is 155 LF, that is an Unnamed Tributary to Jasper Creek, that is >10 Miles from nearest TNW, Lake Bridgeport
 - S176, is a Rapanos Guidance - Swales or erosional features (e.g., gullies, small washes, characterized by low volume, infrequent, or short duration flow, that is 253 LF, that is an Unnamed Tributary to Boons Creek, that is >9 Miles from nearest TNW, Lake Bridgeport
 - S177, is a Rapanos Guidance - Swales or erosional features (e.g., gullies, small washes, characterized by low volume, infrequent, or short duration flow, that is 277 LF, that is an Unnamed Tributary to Boons Creek, that is >9 Miles from nearest TNW, Lake Bridgeport
 - S178, is a Rapanos Guidance - Swales or erosional features (e.g., gullies, small washes, characterized by low volume, infrequent, or short duration flow, that is 154 LF, that is an Unnamed Tributary to Boons Creek, that is >9 Miles from nearest TNW, Lake Bridgeport
 - S179, is a Rapanos Guidance - Swales or erosional features (e.g., gullies, small washes, characterized by low volume, infrequent, or short duration flow, that is 147 LF, that is an Unnamed Tributary to Boons Creek, that is >9 Miles from nearest TNW, Lake Bridgeport
 - S180, is a Rapanos Guidance - Swales or erosional features (e.g., gullies, small washes, characterized by low volume, infrequent, or short duration flow, that is 67 LF, that is an Unnamed Tributary to Hunt Creek, that is >8 Miles from nearest TNW, Lake Bridgeport
 - S181, is a Rapanos Guidance - Swales or erosional features (e.g., gullies, small washes, characterized by low volume, infrequent, or short duration flow, that is 263 LF, that is an Unnamed Tributary to Jasper Creek, that is >10 Miles from nearest TNW, Lake Bridgeport
 - S182, is a Rapanos Guidance - Swales or erosional features (e.g., gullies, small washes, characterized by low volume, infrequent, or short duration flow, that is 67 LF, that is an Unnamed Tributary to Boons Creek, that is >9 Miles from nearest TNW, Lake Bridgeport
 - S183, is a Rapanos Guidance - Swales or erosional features (e.g., gullies, small washes, characterized by low volume, infrequent, or short duration flow, that is 880 LF, that is an Unnamed Tributary to Boons Creek, that is >9 Miles from nearest TNW, Lake Bridgeport

CESWF-RD

SUBJECT: Pre-2015 Regulatory Regime Approved Jurisdictional Determination in Light of *Sackett v. EPA*, 143 S. Ct. 1322 (2023), SWF-2025-00394

- S184, is a Rapanos Guidance - Swales or erosional features (e.g., gullies, small washes, characterized by low volume, infrequent, or short duration flow, that is 180 LF, that is an Unnamed Tributary to Jasper Creek, that is >10 Miles from nearest TNW, Lake Bridgeport
- S185, is a Rapanos Guidance - Swales or erosional features (e.g., gullies, small washes, characterized by low volume, infrequent, or short duration flow, that is 321 LF, that is an Unnamed Tributary to Jasper Creek, that is >10 Miles from nearest TNW, Lake Bridgeport
- S186, is a Rapanos Guidance - Swales or erosional features (e.g., gullies, small washes, characterized by low volume, infrequent, or short duration flow, that is 18 LF, that is an Unnamed Tributary to Jasper Creek, that is >10 Miles from nearest TNW, Lake Bridgeport
- S187, is a Rapanos Guidance - Swales or erosional features (e.g., gullies, small washes, characterized by low volume, infrequent, or short duration flow, that is 54 LF, that is an Unnamed Tributary to Jasper Creek, that is >10 Miles from nearest TNW, Lake Bridgeport
- S188, is a Rapanos Guidance - Swales or erosional features (e.g., gullies, small washes, characterized by low volume, infrequent, or short duration flow, that is 95 LF, that is an Unnamed Tributary to Jasper Creek, that is >10 Miles from nearest TNW, Lake Bridgeport
- S189, is a Rapanos Guidance - Swales or erosional features (e.g., gullies, small washes, characterized by low volume, infrequent, or short duration flow, that is 176 LF, that is an Unnamed Tributary to Jasper Creek, that is >10 Miles from nearest TNW, Lake Bridgeport
- S190, is a Rapanos Guidance - Swales or erosional features (e.g., gullies, small washes, characterized by low volume, infrequent, or short duration flow, that is 223 LF, that is an Unnamed Tributary to Boons Creek, that is >9 Miles from nearest TNW, Lake Bridgeport
- S191, is a Rapanos Guidance - Swales or erosional features (e.g., gullies, small washes, characterized by low volume, infrequent, or short duration flow, that is 19 LF, that is an Unnamed Tributary to Jasper Creek, that is >10 Miles from nearest TNW, Lake Bridgeport
- S192, is a Rapanos Guidance - Swales or erosional features (e.g., gullies, small washes, characterized by low volume, infrequent, or short duration flow, that is 169 LF, that is an Unnamed Tributary to Jasper Creek, that is >10 Miles from nearest TNW, Lake Bridgeport
- S193, is a Rapanos Guidance - Swales or erosional features (e.g., gullies, small washes, characterized by low volume, infrequent, or short duration flow, that is 19 LF, that is an Unnamed Tributary to Jasper Creek, that is >10 Miles from nearest TNW, Lake Bridgeport
- S194, is a Rapanos Guidance - Swales or erosional features (e.g., gullies, small washes, characterized by low volume, infrequent, or short duration

CESWF-RD

SUBJECT: Pre-2015 Regulatory Regime Approved Jurisdictional Determination in Light of *Sackett v. EPA*, 143 S. Ct. 1322 (2023), SWF-2025-00394

- flow, that is 195 LF, that is an Unnamed Tributary to Jasper Creek, that is >10 Miles from nearest TNW, Lake Bridgeport
- S159, a Rapanos Guidance - Swales or erosional features (e.g., gullies, small washes, characterized by low volume, infrequent, or short duration flow, that is 654 LF, that is an Unnamed Tributary to Hunt Creek, that is >8 Miles from nearest TNW, Lake Bridgeport
 - S160, a Rapanos Guidance - Swales or erosional features (e.g., gullies, small washes, characterized by low volume, infrequent, or short duration flow, that is 779 LF, that is an Unnamed Tributary to Hunt Creek, that is >8 Miles from nearest TNW, Lake Bridgeport
 - S161, a Rapanos Guidance - Swales or erosional features (e.g., gullies, small washes, characterized by low volume, infrequent, or short duration flow, that is 174 LF, that is an Unnamed Tributary to Hunt Creek, that is >8 Miles from nearest TNW, Lake Bridgeport
 - S162, a Rapanos Guidance - Swales or erosional features (e.g., gullies, small washes, characterized by low volume, infrequent, or short duration flow, that is 137 LF, that is an Unnamed Tributary to Hunt Creek, that is >8 Miles from nearest TNW, Lake Bridgeport
 - S163, a Rapanos Guidance - Swales or erosional features (e.g., gullies, small washes, characterized by low volume, infrequent, or short duration flow, that is 104 LF, that is an Unnamed Tributary to Hunt Creek, that is >8 Miles from nearest TNW, Lake Bridgeport
- c. Describe aquatic resources and features identified within the review area as waste treatment systems, including treatment ponds or lagoons designed to meet the requirements of CWA. Include the size of the waste treatment system within the review area and describe how it was determined to be a waste treatment system. *N/A*
- d. Describe aquatic resources and features within the review area determined to be prior converted cropland in accordance with the 1993 regulations (reference 2.b.). Include the size of the aquatic resource or feature within the review area and describe how it was determined to be prior converted cropland. *N/A*
- e. Describe aquatic resources (i.e. lakes and ponds) within the review area, which do not have a nexus to interstate or foreign commerce, and prior to the January 2001 Supreme Court decision in “*SWANCC*,” would have been jurisdictional based solely on the “Migratory Bird Rule.” Include the size of the aquatic resource or feature, and how it was determined to be an “isolated water” in accordance with *SWANCC*. *N/A*

CESWF-RD

SUBJECT: Pre-2015 Regulatory Regime Approved Jurisdictional Determination in Light of *Sackett v. EPA*, 143 S. Ct. 1322 (2023), [SWF-2025-00394](#)

- f. Describe aquatic resources and features within the review area that were determined to be non-jurisdictional because they do not meet one or more categories of waters of the United States under the pre-2015 regulatory regime consistent with the Supreme Court's decision in *Sackett* (e.g., tributaries that are non-relatively permanent waters; non-tidal wetlands that do not have a continuous surface connection to a jurisdictional water). [N/A](#)
9. DATA SOURCES. List sources of data/information used in making determination. Include titles and dates of sources used and ensure that information referenced is available in the administrative record.
- a. [Aquatic Resources Delineation Report Materials for SWF-2025-00394.](#)
 - b. [Percheron Professional Services. 2025. Supplemental Drainage Feature Assessment of the Jack County, Texas Project Site.](#)
 - c. [Cowardin, L. M., V. Carter, F.C. Golet, and E.T. LaRoe. 1979. Classification of Wetlands and Deepwater Habitats of the United States. U.S. Fish and Wildlife Service \(USFWS\) Report No. FWS/OBS/-79/31. Washington, D.C.](#)
 - d. [Google Earth. Aerial Imagery. Accessed 2025.](#)
 - e. [Soil Survey Staff, Natural Resources Conservation Service \(NRCS\), USDA. Soil Geographic \(SSURGO\) Database.](#)
 - f. [U.S. Army Corps of Engineers \(USACE\). 1987. Corps of Engineers Wetlands Delineation Manual. Technical Report Y 87 1, U.S. Army Engineer Waterways Experiment Station, Vicksburg, Mississippi.](#)
 - g. [USACE. 2010. Regional Supplement to the Corps of Engineers Wetland Delineation Manual: Great Plains Region \(Version 2.0\), ed. Wakeley, J.S., R.W. Lichvar, and C.V. Noble. ERDC/EL TR-10-1. Vicksburg, Mississippi., U.S. Army Engineer Research and Development Center.](#)
 - h. [USFWS. 2024. National Wetlands Inventory \(NWI\) Version 2. NWI website. U.S. Department of Interior, Fish and Wildlife Service, Washington, D.C. <https://www.fws.gov/wetlands/>.](#)
 - i. [USGS. 7.5-minute digital topographic quadrangle; 1:24,000.](#)
 - j. [USGS. National Hydrography Dataset \(NHD\).](#)

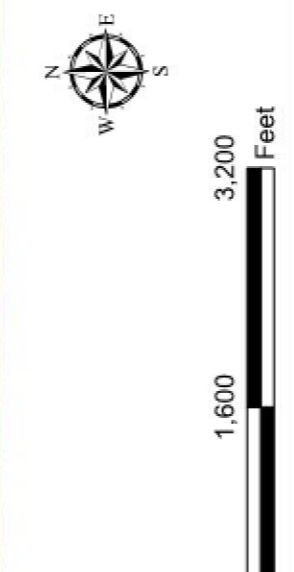
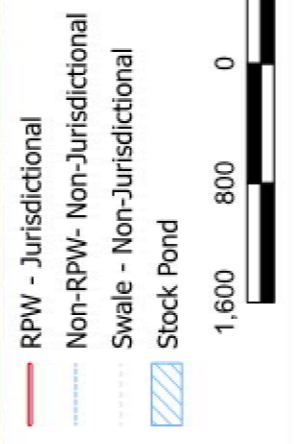
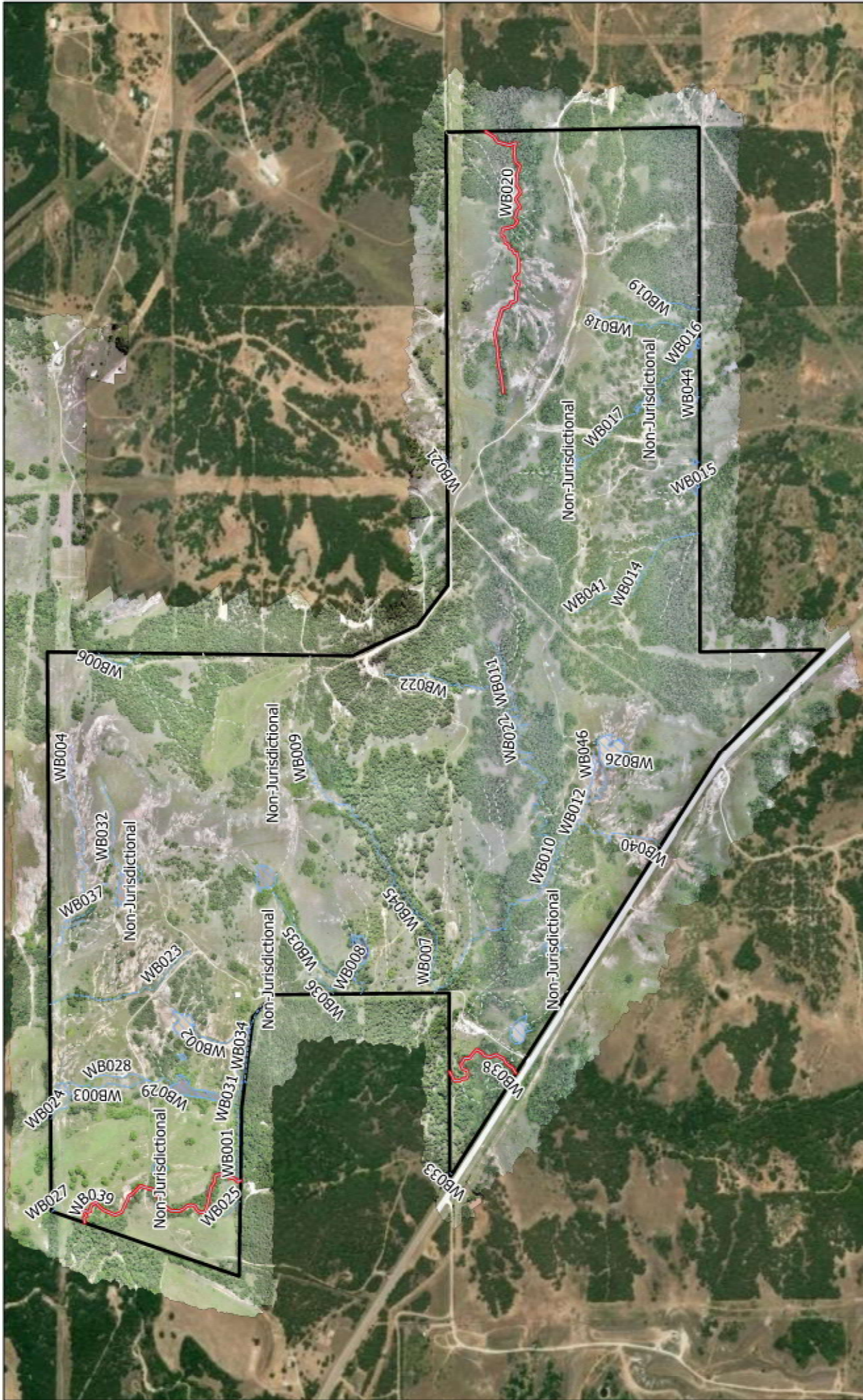
CESWF-RD

SUBJECT: Pre-2015 Regulatory Regime Approved Jurisdictional Determination in Light of *Sackett v. EPA*, 143 S. Ct. 1322 (2023), [SWF-2025-00394](#)

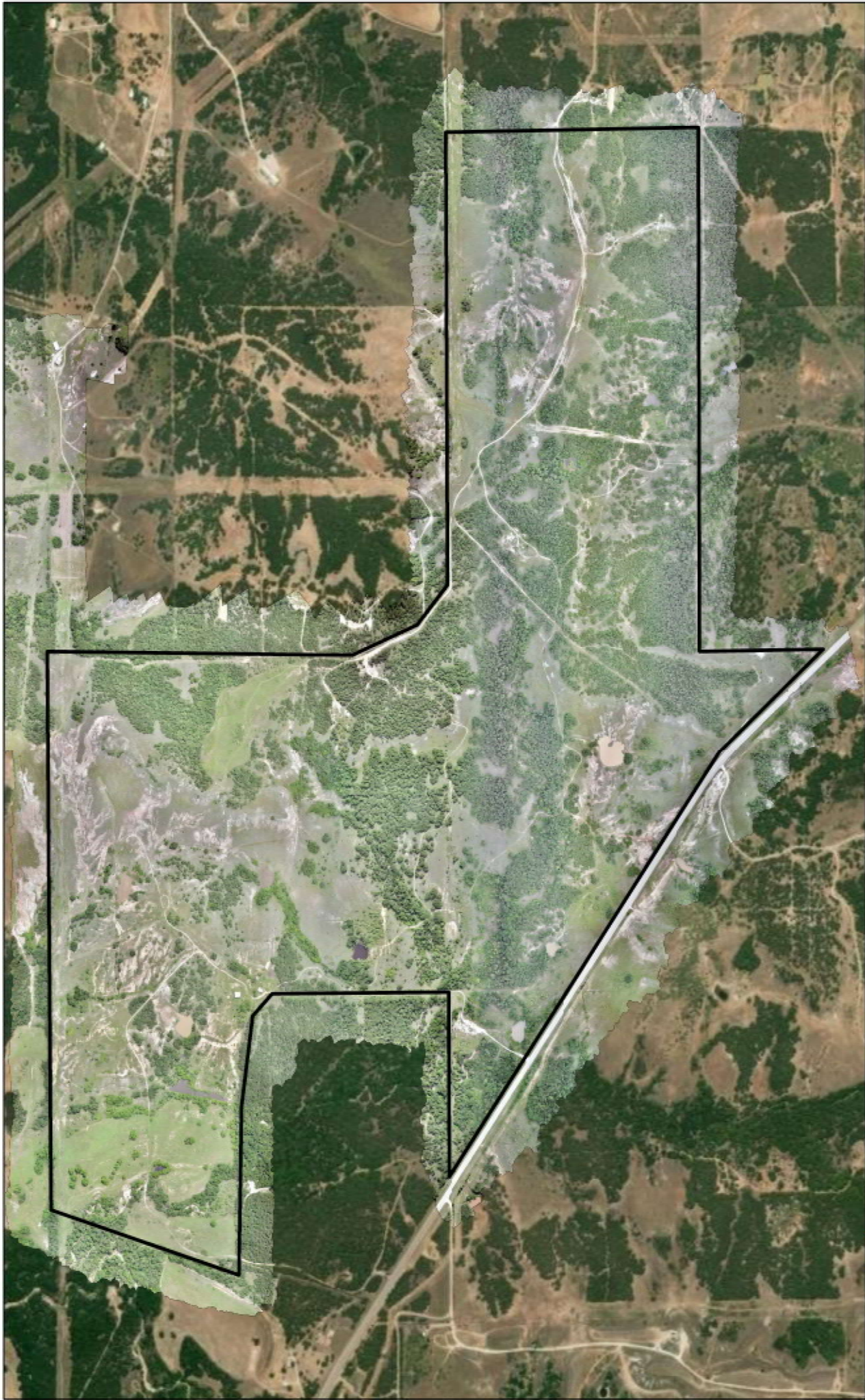
10. OTHER SUPPORTING INFORMATION.

- a. U.S. Department of the Army, U.S. Army Corps Of Engineers, & U.S. Environmental Protection Agency. (2025). Memorandum To The Field Between The U.S. Department Of The Army, U.S. Army Corps Of Engineers And The U.S. Environmental Protection Agency Concerning The Proper Implementation Of “Continuous Surface Connection” Under The Definition Of “Waters Of The United States” Under The Clean Water Act [Memorandum].
<https://www.epa.gov/system/files/documents/2025-03/2025cscguidance.pdf>

11. NOTE: The structure and format of this MFR were developed in coordination with the EPA and Department of the Army. The MFR’s structure and format may be subject to future modification or may be rescinded as needed to implement additional guidance from the agencies; however, the approved jurisdictional determination described herein is a final agency action.

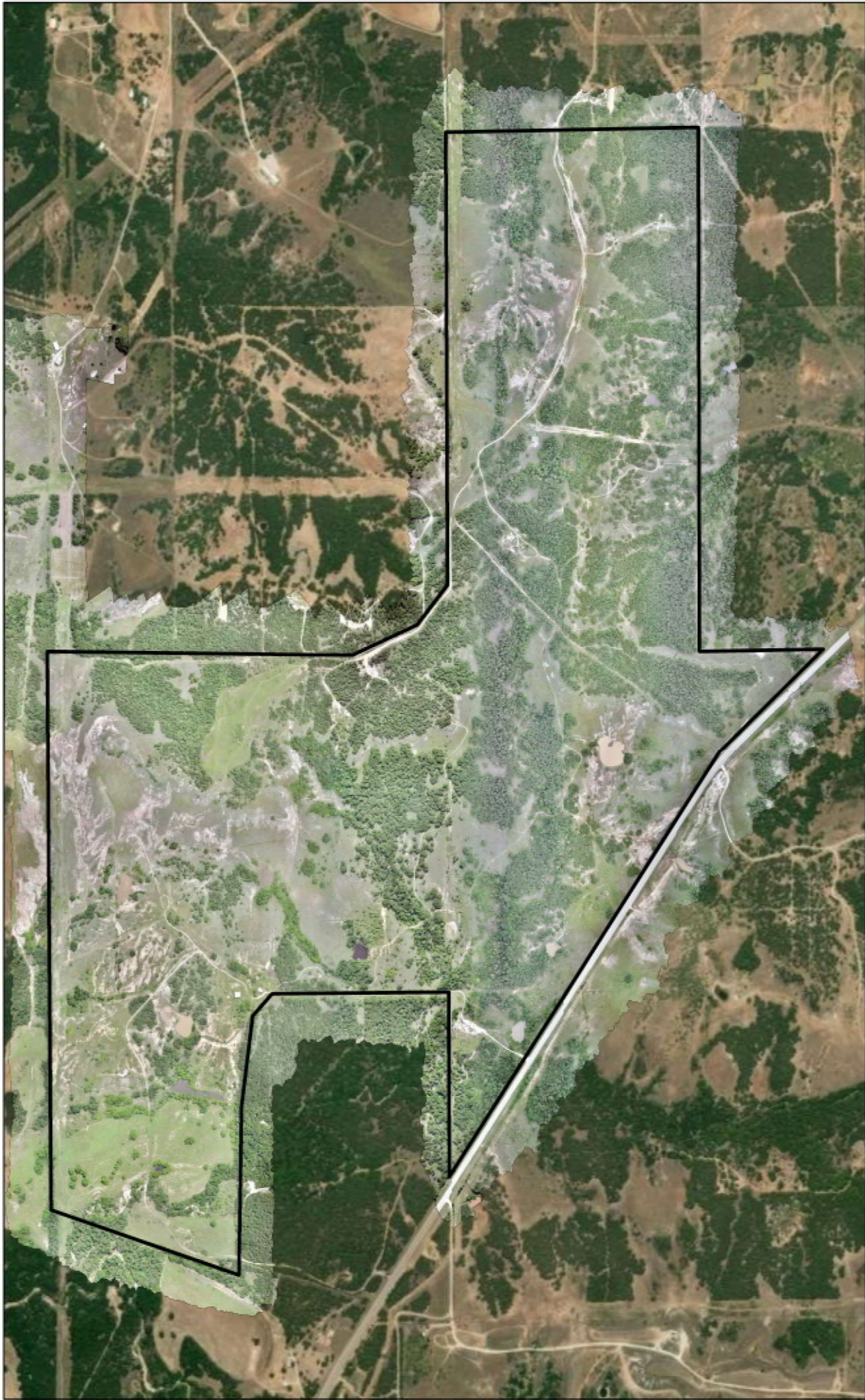



Percheron, LLC
 1904 West Grand Parkway North, Suite 200, Katy, TX, 77449
Figure 10
Findings
LSP Digital Infrastructure, LLC.
Jack County, Texas Project
Jack County, Texas
 Date: September 2025
 Project Num.: 05.108110.0000
 Revised by: DG



Percheron, LLC
1904 West Grand Parkway North, Suite 200, Katy, TX, 77449

Figure 9
UAV Drone Imagery (2025)
LSP Digital Infrastructure, LLC.
Jack County, Texas Project
Jack County, Texas



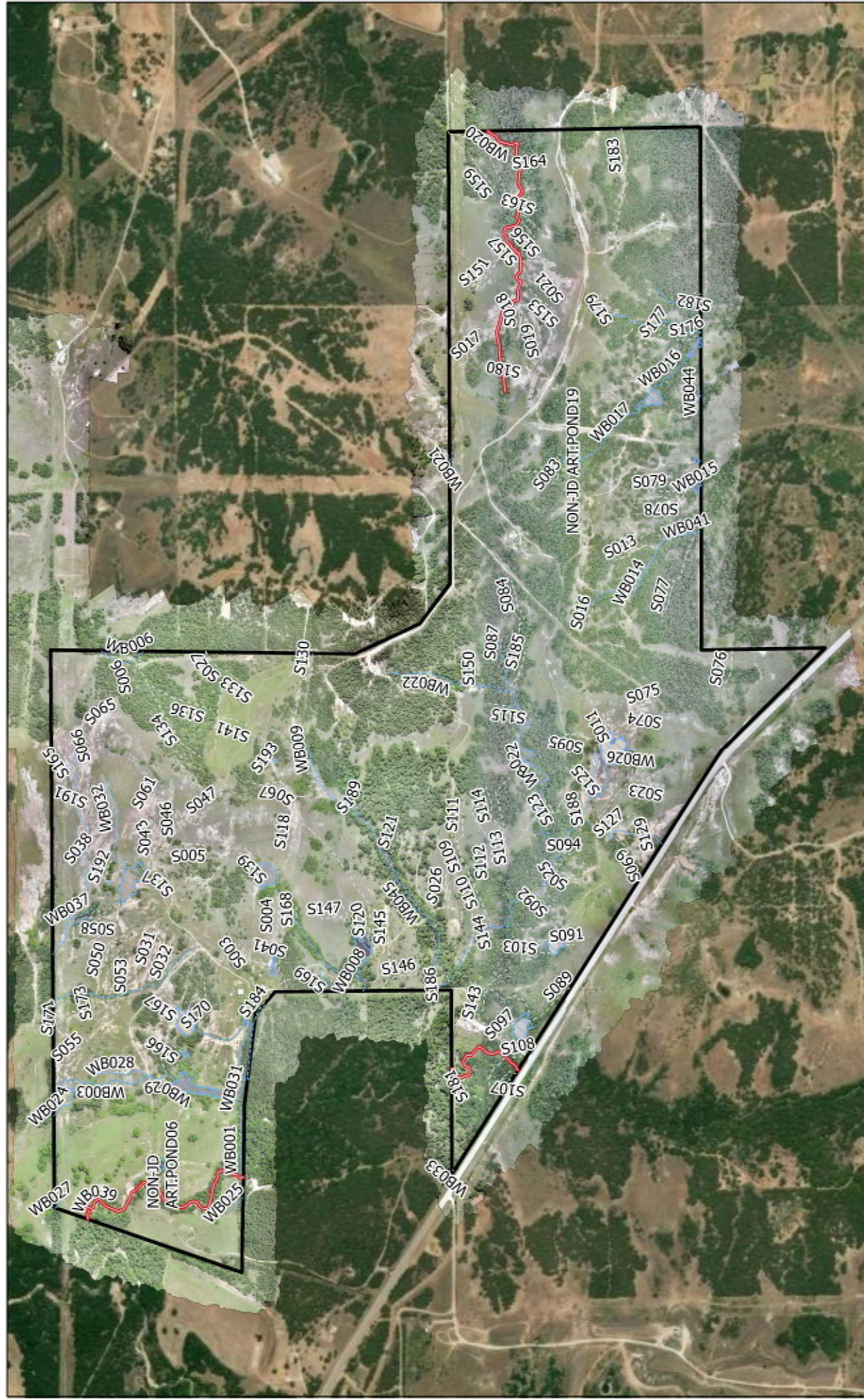
Percheron, LLC
1904 West Grand Parkway North, Suite 200, Katy, TX, 77449

Figure 9
UAV Drone Imagery (2025)
LSP Digital Infrastructure, LLC.
Jack County, Texas Project
Jack County, Texas

Date: September 2025

Project Num.: 05_108110.0000

Revised by: DG



- RPW - Jurisdictional
- Non-RPW- Non-Jurisdictional
- - - Swale - Non-Jurisdictional
- NON-JD ART.POND

