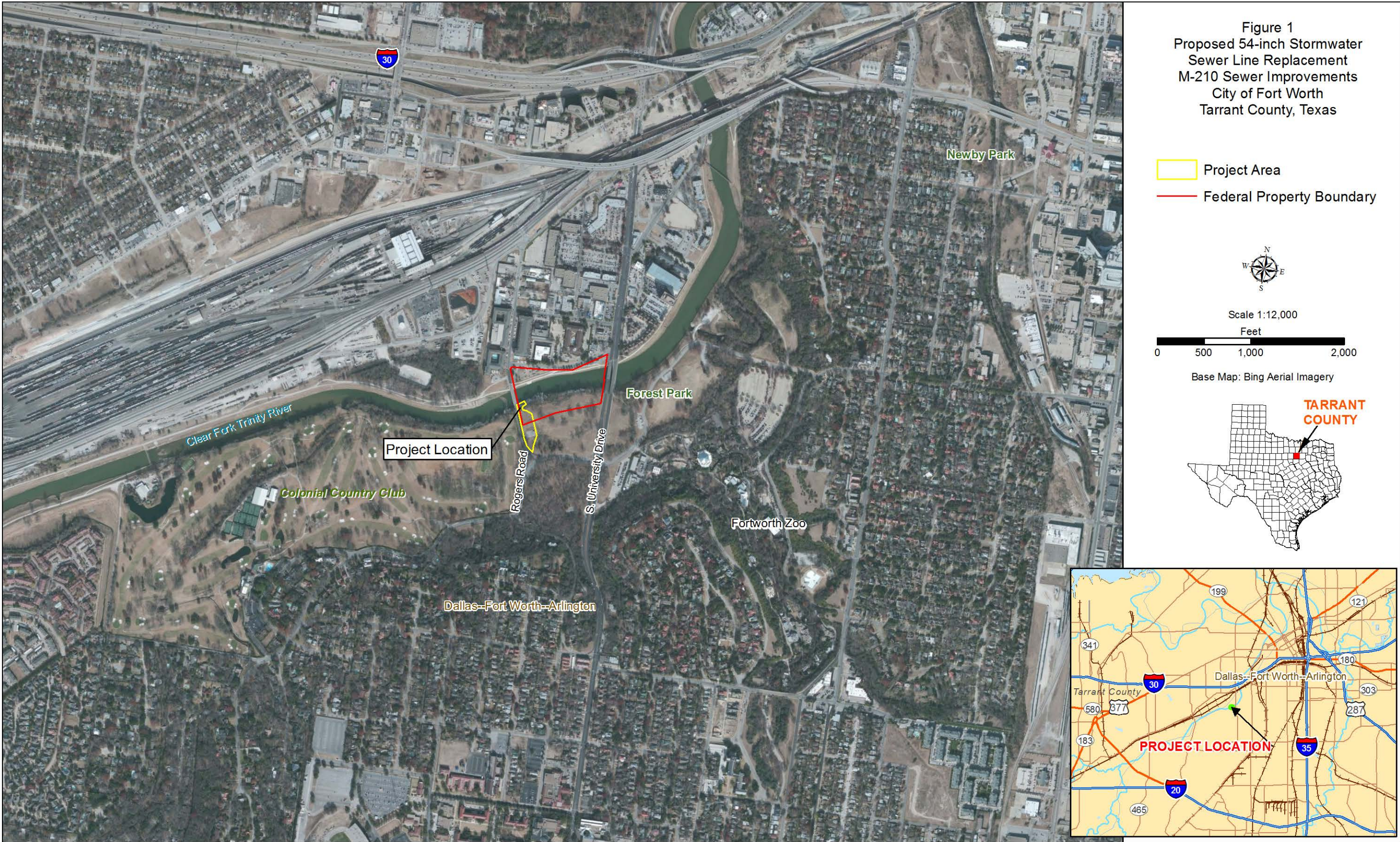
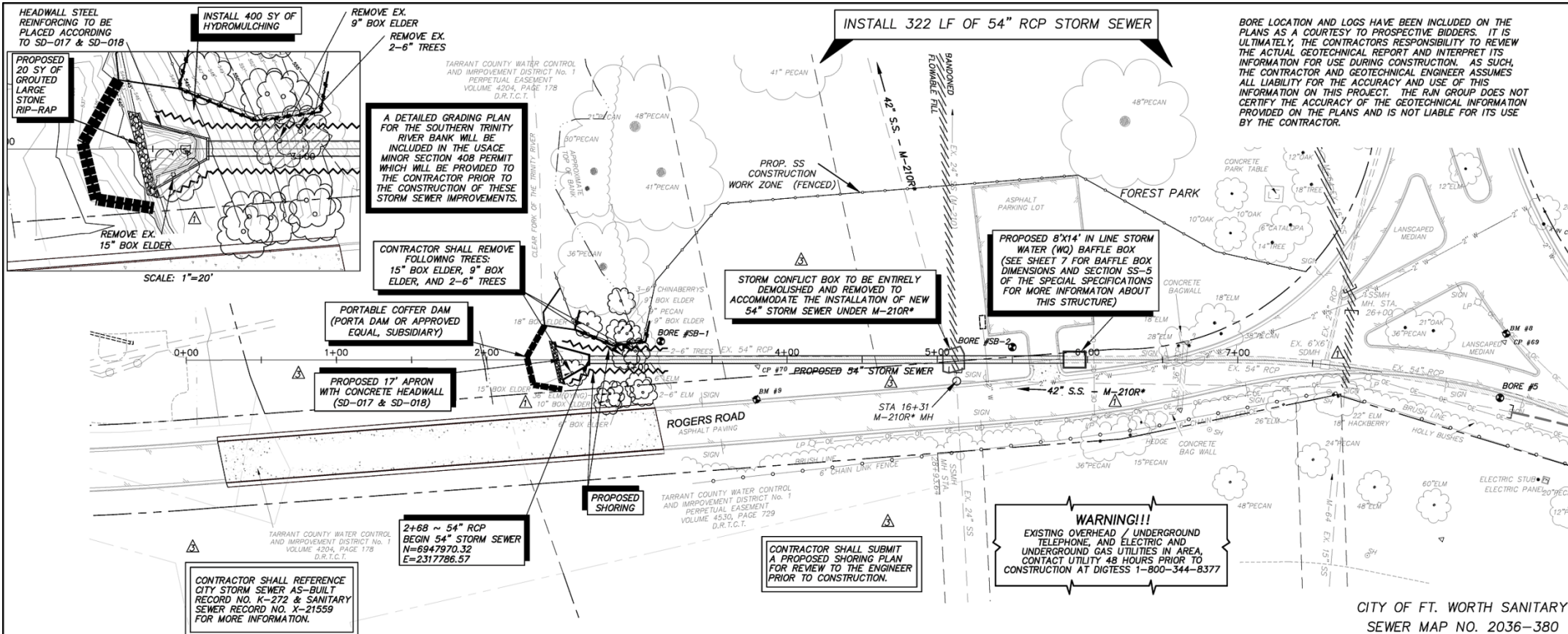


Appendix A

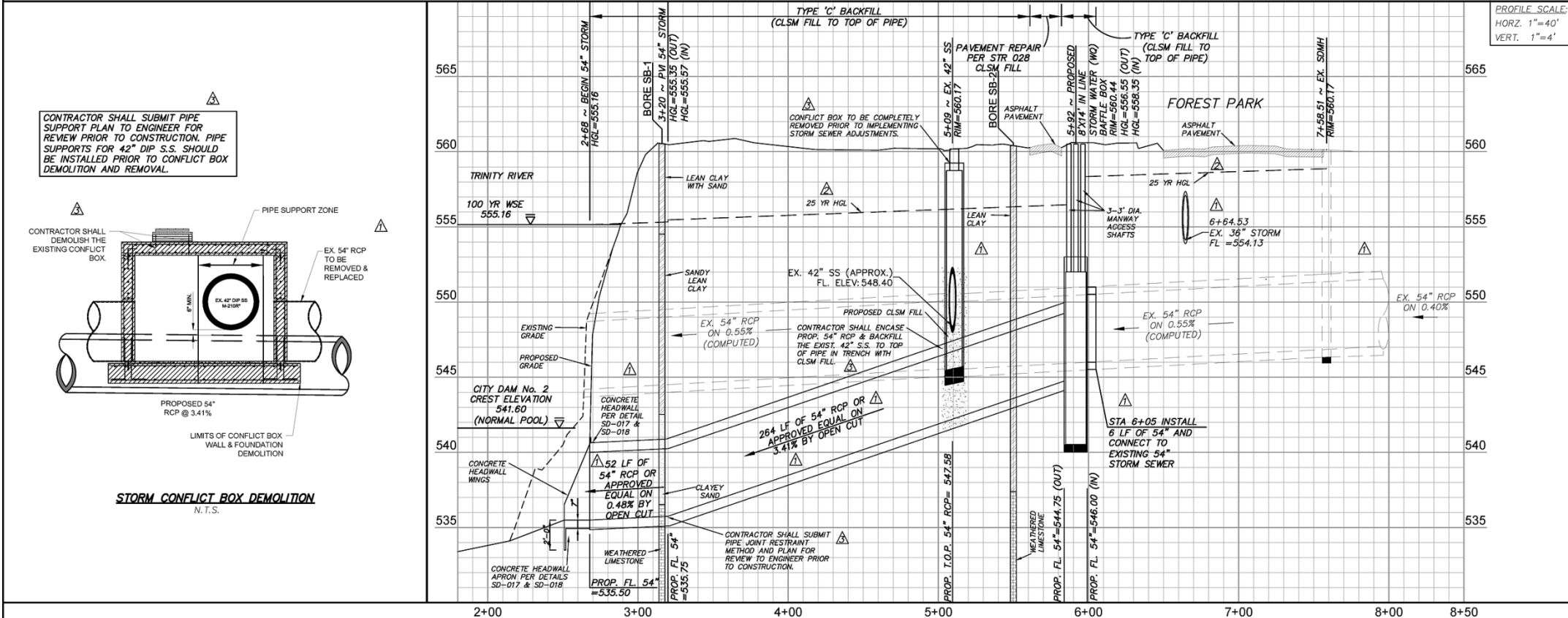
Figures





- NOTES:**
1. CONTRACTOR SHALL COORDINATE STORM SEWER IMPROVEMENTS WITH CITY ARBORIST TO DEVELOP AND IMPLEMENT A MITIGATION PLAN FOR WORKING IN THE PARK PRIOR TO INITIATING CONSTRUCTION.
 2. PROTECT TREE CANOPIES ALONG ROGERS ROAD & SOUTHERN TRINITY RIVER CHANNEL BANK.
 3. UNLESS OTHERWISE DESIGNATED, ALL PIPE MATERIAL SHALL BE SELECTED FROM THE CITY APPROVED PRODUCT LIST.
 4. CONTRACTOR SHALL INSTALL AND MAINTAIN THE SWPPP AT ALL TIMES DURING CONSTRUCTION.
 5. STORM WATER (WQ) BAFFLE BOX OR APPROVED EQUAL SHALL CAPTURE 30 CFS (MIN.) FIRST FLUSH OF STORM WATER AND PASS A PEAK FLOW OF 120 CFS (MIN.) WITH A MAX. ALLOWABLE HEAD LOSS OF 1.8 FT. THROUGH THE STRUCTURE.
 6. CONTRACTOR SHALL MEET WITH PACSD STAFF PRIOR TO CONSTRUCTION MOBILIZATION AND DURING CONSTRUCTION FENCING INSPECTION. CONTACT CORNELL GORDON AT (817) 392-5764 AND MELINDA ADAMS AT (817) 392-5705 FOR PROJECT ACTIVITIES COORDINATION.
- THE LOCATION AND DIMENSIONS OF EXISTING UTILITIES SHOWN ON THE PLANS ARE APPROXIMATE AND WERE OBTAINED FROM UTILITY COMPANIES RECORDS. IT IS CONTRACTOR'S SOLE RESPONSIBILITY TO VERIFY LOCATION, DEPTH AND DIMENSION OF EXISTING UTILITIES PRIOR TO CONSTRUCTION.
- WARNING! UNDERGROUND UTILITIES IN AREA OF CONSTRUCTION. CONTACT THE FOLLOWING AT LEAST 48 HOURS PRIOR TO EXCAVATION IN THIS AREA.
- | | |
|--|----------------|
| FORT WORTH WATER DEPARTMENT | 817-392-8296 |
| FORT WORTH TRANSPORTATION & PUBLIC WORKS | 817-392-8100 |
| FORT WORTH PARKS AND COMMUNITY SERVICES | 817-392-5700 |
| DIG TESS | 1-800-344-8377 |
| ONCOR | 1-888-313-6862 |
| AT&T | 1-800-331-0500 |
| CHARTER COMMUNICATIONS | 1-888-438-2427 |
| ATMOS ENERGY | 1-888-286-6700 |

- BENCHMARKS:**
1. BM #8: "C" CUT ON THE BACK OF CURB OF A MEDIAN AT THE INTERSECTION OF ROGERS RD. & COLONIAL PARKWAY. ±70' SOUTHWEST OF E. ROGERS RD. ±35' NORTHWEST OF E. OF COLONIAL PKWY.
ELEV. = 559.17'
 2. CP #68: 3/4" CIRS ON THE SOUTHEAST SIDE OF COLONIAL PKWY. ±33' SOUTHEAST OF E. OF COLONIAL PKWY. ±100' NORTHEAST OF E. ROGERS AVE.
ELEV. = 558.38'



REV.	COMMENTS	BY	DATE
1	STORM SEWER MODIFICATIONS	CEB	3-27-2012
2	DESIGN STORM AND HGL MODIFICATIONS	CEB	3-27-2012
3	PLAN NOTE CHANGES	CEB	3-27-2012
4	PACSD CONSTRUCTION NOTES	CEB	3-27-2012

Figure 2
Plan and Profile
Proposed 54-inch Storm Sewer Replacement Project
M-210 Sewer Improvements
City of Fort Worth
Tarrant County, Texas
FORT WORTH CITY OF FORT WORTH, TEXAS
WATER DEPARTMENT
CLEAR FORK DRAINAGE BASIN
M-210 SEWER IMPROVEMENTS-PART 2
M-210R*
COLONIAL PARKWAY 54" STORM SEWER ADJUSTMENTS

DESIGN: CEB	DATE: March 2012	SCALE: AS NOTED	PROJECT NO: 01022	SHEET: 13 OF 13
-------------	------------------	-----------------	-------------------	-----------------

rjngroup Texas Registered Engineering Firm F-3260
RJN GROUP, INC. 6701 BRENTWOOD STAIR RD. SUITE 100 W FORT WORTH, TX 76112

