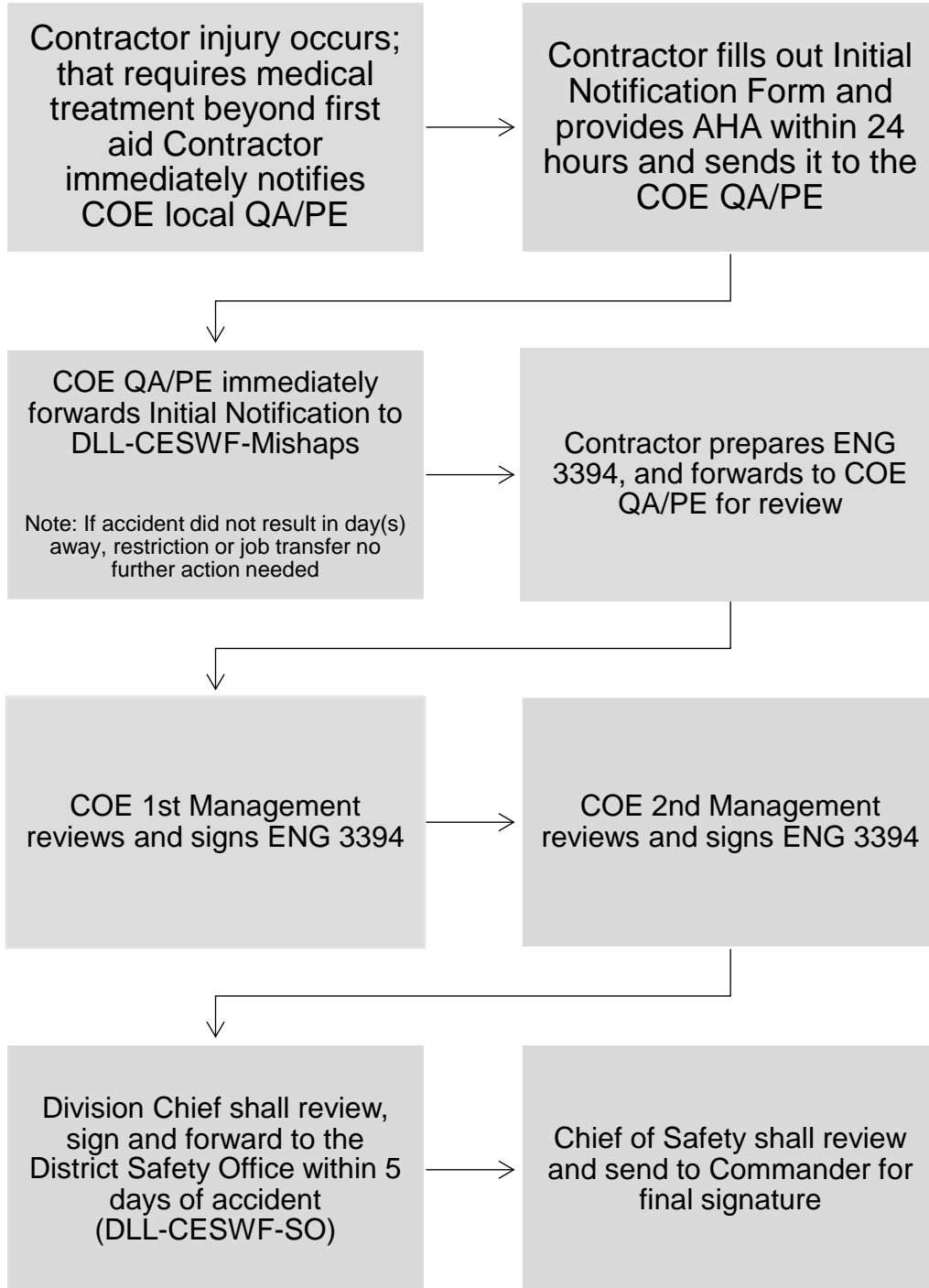


## Contractor Injury Accident

Serious injury accidents to include fatalities, 1 or more hospitalized, possible permanent or partial disability: **Shall be reported immediately to the District Safety Office DLL-CESWF-Mishaps**



\*A mishap is any unplanned, undesired event that occurs during the course of work being performed. The term "mishap" includes accidents, incidents and near misses.