

Lewisville Lake Master Plan Online Public Review of Final Draft May 2020



Presented By Rob Jordan
Lake Manager
U.S. Army Corps of Engineers
Fort Worth District

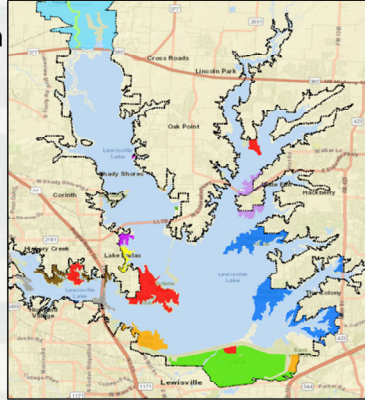


Hello, my name is Rob Jordan. I am the US Army Corps of Engineers Lake Manager at Lewisville Lake. I have been working with a planning team for approximately three years to revise the Lewisville Lake Master Plan. We now have a draft revision ready for public review. Normally, we would hold face-to-face public workshops to announce the draft, but the COVID 19 virus has made it necessary to conduct our public involvement effort on-line.

This narrated slide show contains 12 slides and should only require about 8 minutes of your time. Following the slide show, I urge you to read the draft 2020 revised Master Plan and the related Appendices, A thru F, as well as the 1985 Master Plan and the 2004 Master Plan supplement to see where we have been compared to where we are going. All the documents you will need for the review are posted on the USACE Fort Worth District website at the link provided later in this presentation. Thank you for taking time to view this website and listen to this presentation.

Purpose of this Presentation

- Announce the availability of the draft revision of the Lewisville Lake Master Plan and accompanying Environmental Assessment.
- Highlight changes proposed in the revised Master Plan compared to the previous 2004 version.
- The draft Master Plan with Environmental Assessment is available for 45-day public comment period beginning May 8, 2020



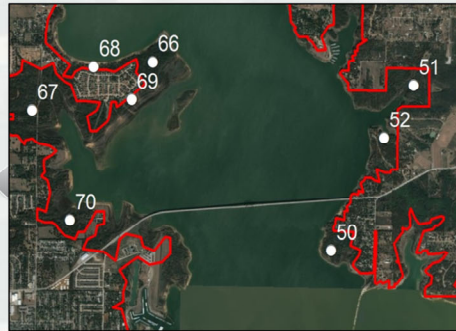
BUILDING STRONG

The purpose of posting this presentation for public review is three-fold. The primary purpose is to publicly announce the availability of the draft Master Plan and related Environmental Assessment for public review and comment. Secondly, I will point out the main proposed changes from prior master plans to the current draft. The draft Master Plan and Environmental Assessment will be available for public comment for 45 days beginning May 8, 2020 and ending June 22, 2020. This presentation is available in the following three formats:

- A pdf version on this website that can be read
- A narrated slide show on this website that runs on set timing
- A video that is posted to a YouTube link provided on this website.

Process Followed to Date

- Initial public meetings held on May 2 & 4, 2017.
- Subsequent workshops held with 19 stakeholders (TPWD, cities, non-profits).
- **All comments were considered.** See Chapter 7 of the draft for comments and Government response.
- Wildlife habitat evaluation completed for entire lake area
- **A Draft Environmental Assessment is available in Appendix B of the draft)**



BUILDING STRONG®

The process to date included two identical public workshops held on May 2 & 4, 2017. Seventy-seven individuals attended the two initial meetings and comments were received from Texas Parks & Wildlife Department, 8 cities and 17 individuals.

Thru 2017 and into 2018, meetings were held with approximately 19 key stakeholders including TPWD, cities and non-profit organizations that partner with the Corps in the management of park areas and other lands around Lewisville Lake.

All comments received following the initial public meetings and stakeholder meetings were considered in preparing the draft revised Master Plan. The comments and Government response is included in Chapter 7 of the draft revised Master Plan.

The Corps conducted a Wildlife Habitat Appraisal of the Federal lands surrounding Lewisville Lake in October 2017. Approximately 84 sample points were surveyed in the major habitat types found at Lewisville Lake. The results of the appraisal are included in Appendix C of the draft revised Master Plan.

What Master Plans Are Not

- Master Plans **do not** address in detail the technical aspects of
 - ▶ Regional water quality
 - ▶ Water management for flood risk management
 - ▶ Water supply or water level management
 - ▶ Shoreline management (Private docks, mowing, etc)



BUILDING STRONG®

Master Plans do not address all things at a lake. As was explained at the initial public workshops, the Corps defines a Master Plan as plan that addresses land and recreation program management. The management of Corps lands, including the developed parks and concession sites, must adapt to changing lake conditions resulting from primary project missions of flood risk management, water supply, and in some cases hydroelectric production.

Master Plans do not address:

- Regional water quality
- Water management related to flood risk management
- Water supply or water level management
- Shoreline Management Plan...(which is a plan developed by the Corps to address the management of allowable private activities such as private boat docks, mowing and pedestrian paths. The Shoreline Management Plan for Lewisville Lake is briefly mentioned in Chapter 6 of the draft revised Master Plan.

Principal Changes from Current Master Plan to Revised Plan

- **Changes to Land Classifications**
 - ▶ Almost no net change in acreage classified as **High Density Recreation**
 - ▶ **Increased Environmentally Sensitive Areas** from 7,292 to 10,918 acres
 - ▶ **Narrow Shoreline Areas** changed From Wildlife Management to Low Density Recreation
- Comprehensive new land management objectives
- **Reduced Utility Corridors** from 42 to 38



Example of Land Classification Map



BUILDING STRONG®

Listed on the slide are the principal changes from the current Master Plan to the draft revised Master Plan. While these are the primary changes, it is important to read Chapters 4,5, and 8 of the draft revised Master Plan to understand the full scope of proposed changes.

- As listed there was almost no net change in the acres of lands that are managed as High Density Recreation lands...basically no change to the parks we are all familiar with.
- Environmentally Sensitive Areas are now treated as a separate Land Classification (not an overlay as was done in the 2004 MP supplement), and the acreage of ESA increase from 7,292 acres to 10,918 acres. The increase is due primarily to the inclusion of riparian areas on tributaries located on the east side of the Lake.
- The 19 shoreline segments identified as Narrow Shoreline Variance Areas in a 2005 revision of allowable vegetation modification activities were each classified as Multiple Resource Management Lands – Low Density Recreation. The Federal ownership in these 19 areas is very narrow ranging from less than 50 feet to approximately 100 feet in width.
- In the 2004 Master Plan Supplement, 42 Utility Corridors were identified. In the proposed draft revised Master Plan the number of Utility Corridors was reduced to 38. Utility Corridors generally follow existing roads and utility lines and have a purpose of consolidating future utilities in areas that result in the least environmental damage. The 38 Utility Corridors are fully described in Chapter 6 of the Master Plan and are shown on the maps in Appendix A.

Land Classification Definitions

Land Classification	Definition
Project Operations	Those lands required for the dam, operations center, office, maintenance compound and other areas that are used solely for project operations
High Density Recreation	Land developed for intensive recreational activities by the visiting public, including developed recreation areas and areas for marinas and related concessions, and resorts
Multiple Resource Management Land	Low Density Recreation: Activities such as hiking, primitive camping, wildlife observation, and hunting
	Wildlife Management: Fish and wildlife management activities
Environmentally Sensitive Areas	Areas where scientific, ecological, cultural or aesthetic features have been identified. These areas must be considered by management to ensure they are not adversely impacted



BUILDING STRONG®

The draft revised Master Plan includes a new Land Classification scheme with four dominant classifications and two sub-classifications as described on the slide. The current land classification scheme has only three classifications. The Land Classification Maps in Appendix A of the draft revised Master Plan show the location and extent of each of the proposed Land Classifications.

Change in Land Classification Acreage

Prior (2004) Land Classifications	Acres	New Land Classifications	Acres
Operation and Maintenance	1,170	Project Operations	1,083
Recreation	8,935	High Density Recreation	4,780
		Separable Recreation Lands	1,136 ³
Environmentally Sensitive Areas	7,292 ¹	Environmentally Sensitive Areas	10,918
Fish and Wildlife Management	6,738 ²	Multiple Resource Management – Low Density Recreation	543
Total Fee Area = 45,823		Multiple Resource Management – Wildlife Management	3,268
Conservation Pool 522.0 NGVD29	28,980	Conservation Pool 522.0 NGVD29	27,175
Flowage Easement	5,746 ⁴	Flowage Easement	8,712



BUILDING STRONG[®]

Slide 7 is important and shows the proposed acreage changes from the Prior (2004) land classifications to the new land Classifications. These proposed changes are described in more detail in Chapter 8 of the revised MP. Rather than listening to the type and extent of each change, I urge you to read the pdf version of this presentation posted on this website and to read Chapter 4, 5 & 8 of the draft revised Master Plan to gain a full understanding of the proposed land classification changes.

Briefly, the changes are as follows:

Project Operations (PO): Very little change. The spillway channel on the east side of the dam up to Fish Hatchery Road was added to Project Operations land as well as a storage yard area. In spite of this small addition, the change from prior to new actually decreased by 97 acres. This decrease is likely the result in improved GIS measurement technology since measurements were made for the 2004 MP supplement.

High Density Recreation (HDR): Although the acreage in this land classification shows a large reduction from the prior to the new land classification, no notable changes were made to the HDR areas from the prior to the new classifications. The planning team believes that the prior acreages classified as "Recreation" may have included all areas in the 1985 MP that had some degree of recreational purpose. That would explain the large difference in the prior "Recreation" classification versus the new HDR Classification. The only changes to HDR lands in the revised MP is the addition of a small area surrounding "Copperas Lake" (aka Highland Village Lake), the addition of a small tract below the dam as the site for a possible nature center, and the change of small tracts in Hickory Creek Park from HDR to ESA.

Environmentally Sensitive Areas (ESA): The prior ESA classifications were considered to be an overlay on another, underlying classification. The 2004 ESA classification overlays did not include important east-side riparian areas, including two areas where an environmental restoration project on Hackberry Creek and Stewart Creek tributaries has been completed. Several of these riparian areas were included as ESAs. Other areas added as ESA in this 2020 Plan include select portions of Hickory Creek Park, as well as an area that includes Nix and Jefferson Sloughs and the Rocky Point ESA near the north end of the old Lake Dallas Dam. In the revised MP, the ESA classification is a stand-alone classification instead of the prior status as an overlay.

Multiple Resource Management Lands (MRML): The prior Fish and Wildlife Management areas are proposed to be changed to MRML with sub classifications of Low Density Recreation (LDR) and Wildlife Management (WM). The LDR lands include only the 19 shoreline segments that were designated as Narrow Shoreline Variance Areas during a 2005 review of allowable vegetation modification activities as Lewisville Lake. This review is explained in more detail in Chapter 6 of the revised MP. The WM lands include many of the areas under the prior classification of Fish & Wildlife Management although much of this prior acreage is proposed to be reclassified as ESA.

Conservation (normal) pool surface acreage reduced from 28,980 in 2004 to 27,175 in the proposed MP revision. This reduction was due in part to new lands created by sediment deposition and the better accuracy of current measurement technology. The 27,175 acre figure was determined during a survey conducted jointly by the Texas Water Development Board and USACE in 2007.

Flowage Easement: Flowage Easements are not a land classification but are mentioned in the MP for informational purposes. Flowage easements are acquired by USACE to allow lands to be periodically inundated during flood events, but USACE does not own fee simple title to these lands. The 2004 MP listed 5,746 acres of flowage easements, but the acreage mentioned in the revised MP will be 8,712. The planning team believes that flowage easement lands resulting from the disposal of some fee-owned lands in the early 1960's were not accounted for in the 2004 MP.

Management Goals & Resource Objectives

- Chapter 3 of the Master Plan
- Consists of 5 Goals (**broad generalized statements**)
- Consists of 5 Resource Objective Categories
 - ▶ Recreational Objectives
 - ▶ Natural Resource Management Objectives
 - ▶ Visitor Information, Education, and Outreach Objectives
 - ▶ General Management Objectives
 - ▶ Cultural Resource Management Objectives



BUILDING STRONG®

Slide is self explanatory. These goals and objectives differ slightly from the goals and objectives developed for the 2004 Master Plan Supplement. For a complete description of these revised goals and objectives, please review Chapter 3 of the revised draft Master Plan.

National Environmental Policy Act of 1969

- Applies to federal actions that affect the environment such as **Master Plan revisions**
- Requires federal agencies to **CONSIDER and DOCUMENT** the environmental impacts of their proposed actions as part of an agency's **OVERALL** planning and decision-making
- Requires federal agencies to **cooperate with other federal, state and local governments** as well as with organizations and **citizens** during project planning
- Scoping is where the federal agency asks for initial input from other agencies, citizens and organizations regarding project area, resources and uses



BUILDING STRONG®

Slide is self explanatory, but I want to emphasize that the “Proposed Action” is the revision of the Master Plan and the EA will assess the impacts of that action. The EA identifies possible Alternatives, including a No Action alternative and will describe which alternative is the “Preferred Alternative”. Basically, the revision of the Master Plan triggers the need to prepare an EA. The EA will be prepared as an Appendix to the Master Plan Revision.

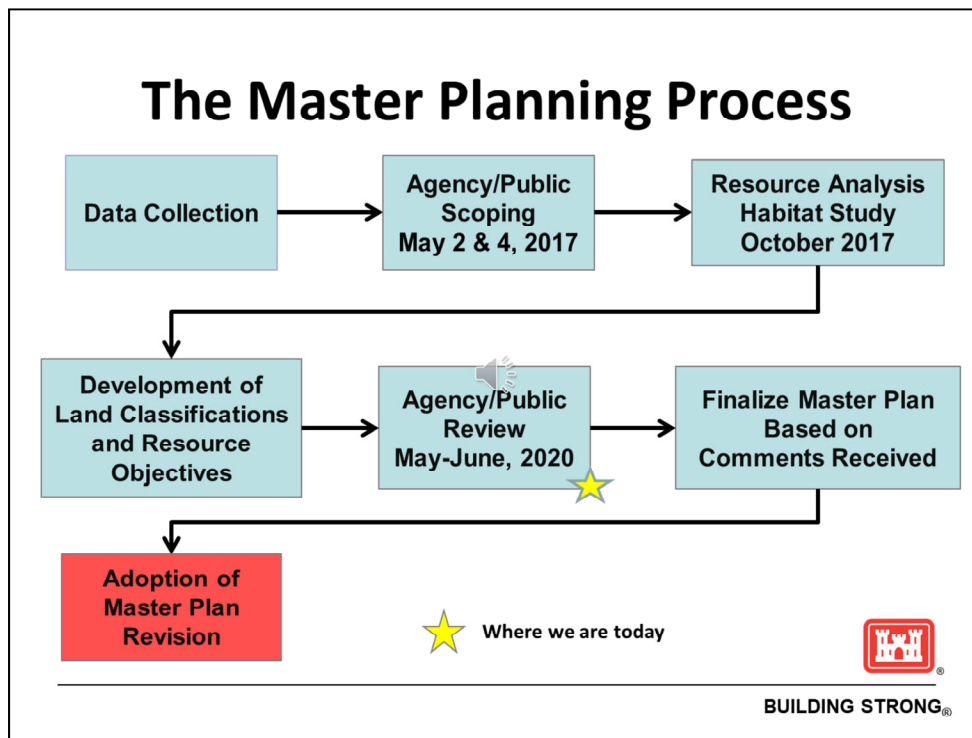
Recreational Boating Survey

- A recreational boating survey was conducted in summer 2019. Although not directly related to the revision of the Master Plan, the results of the boating survey will eventually be used by the Corps to guide management of recreational use of the water surface.
- The survey was similar to a 1998 survey and was implemented on three Sundays, July 7, 21 and 29. The survey is summarized in Chapter 6 of the revised draft Master Plan.



BUILDING STRONG®

The Recreational Boating Survey (RBS) conducted in the summer of 2019 was very similar to a RBS completed in the summer of 1998. The 1998 RBS resulted in the establishment of a water-related recreation development policy (WRRDP) for Lewisville Lake that remains in effect. The findings from the 2019 RBS, as well as surveys conducted at other lakes, will be used to update the policy for Lewisville Lake as well as a District-wide WRRDP. I urge you to read Chapter 6 of the revised Master Plan where the 2019 Recreational Boating Survey is summarized. The Corps has not established a schedule for the update of the Lewisville Lake or the District-wide Water Related Recreation Development Policy.



This seven step planning process describes the path we have followed to date. We are currently at the yellow star where Agency and Public Review of the draft revised Master Plan and Environmental Assessment will take place beginning May 8 and ending June 22, 2020.

How to Participate

- Review the draft revised Master Plan. It is posted on this website along with all related documents needed for your review.
- Use the link provided on this website to submit a written comment via email. Also, a link is provided on this website where you can watch a video of this presentation. You may also print the comment form provided on the website, fill it out by hand and mail it to the Corps at the address on the comment form.
- If you need a printed copy or have questions, call 469-645-9100. As soon as our office at 1801 North Mill Street, Lewisville, Texas is reopened to the public, those needing a printed copy will be notified.
- Verbal comments cannot be considered. Comments are due by close of business on June 22, 2020.



BUILDING STRONG®

Your participation is the key to preparing a Master Plan for Lewisville Lake that will guide management of the lands and water surface for approximately the next 25 years. Please review the documents posted on this website.

A convenient link is provided on this website where you can submit a comment via email. A link is also provided where you can watch this presentation as a video. The video has the advantage of being able to use a pause button to more carefully view the information being presented.

When the lake office reopens to the public, a printed copy of the draft revised Master Plan will be available for in-office review.

I want to emphasize that only written comments can be accepted. While we encourage you to call the office if you have questions, only written comments can be considered.

This concludes
the on-line
presentation.
Thank you for
your time and
willingness to
participate.



Life Jackets Float – You Don't



BUILDING STRONG®

This concludes the presentation.

I am really excited about where we are at in the Master Plan process and look forward to having final approval around September 2020.

Please remember water safety when you are out enjoying the lake and always wear a properly fitted life jacket.

Thank you for taking time to participate and remember this is your reservoir, your opportunity to contribute to the Master Plan and future management of Lewisville Lake.