

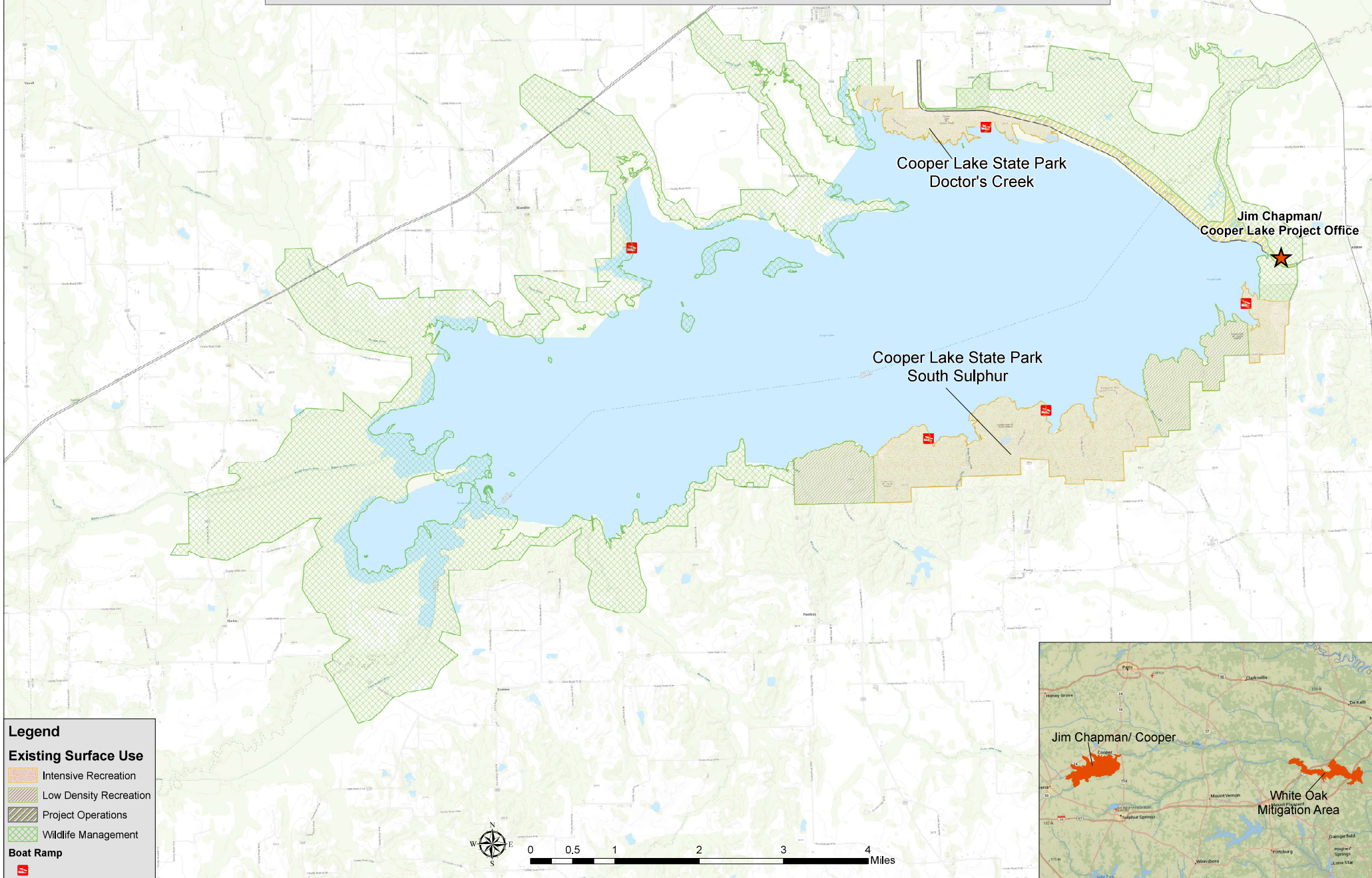
# Jim Chapman/ Cooper Lake: Existing Surface Use Classification

US Army Corps of Engineers, Fort Worth District, Piney Woods Region

## Pertinent Data

Conservation Pool: 440' msl  
Top of Flood Pool: 446.2' msl  
Top of Dam :464.5' msl  
Dam: Rolled Earth Fill

Conservation Pool Surface: 19,305 acres  
Total Project Area: 32035.44 acres  
Outlet Works: 3000 cfs  
Emergency Spillway: 134,700 cfs





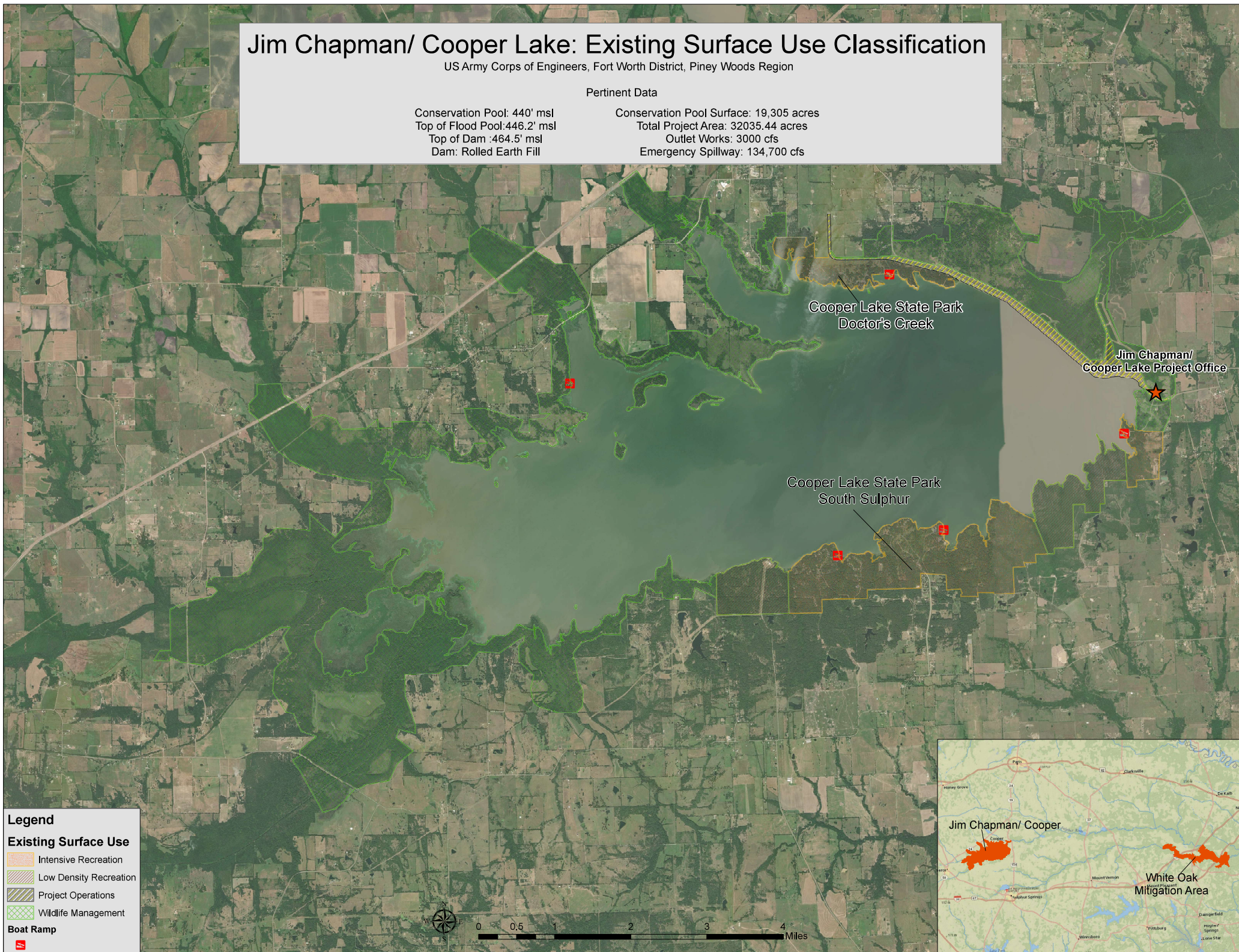
# Jim Chapman/ Cooper Lake: Existing Surface Use Classification

US Army Corps of Engineers, Fort Worth District, Piney Woods Region

## Pertinent Data

Conservation Pool: 440' msl  
Top of Flood Pool: 446.2' msl  
Top of Dam :464.5' msl  
Dam: Rolled Earth Fill

Conservation Pool Surface: 19,305 acres  
Total Project Area: 32035.44 acres  
Outlet Works: 3000 cfs  
Emergency Spillway: 134,700 cfs





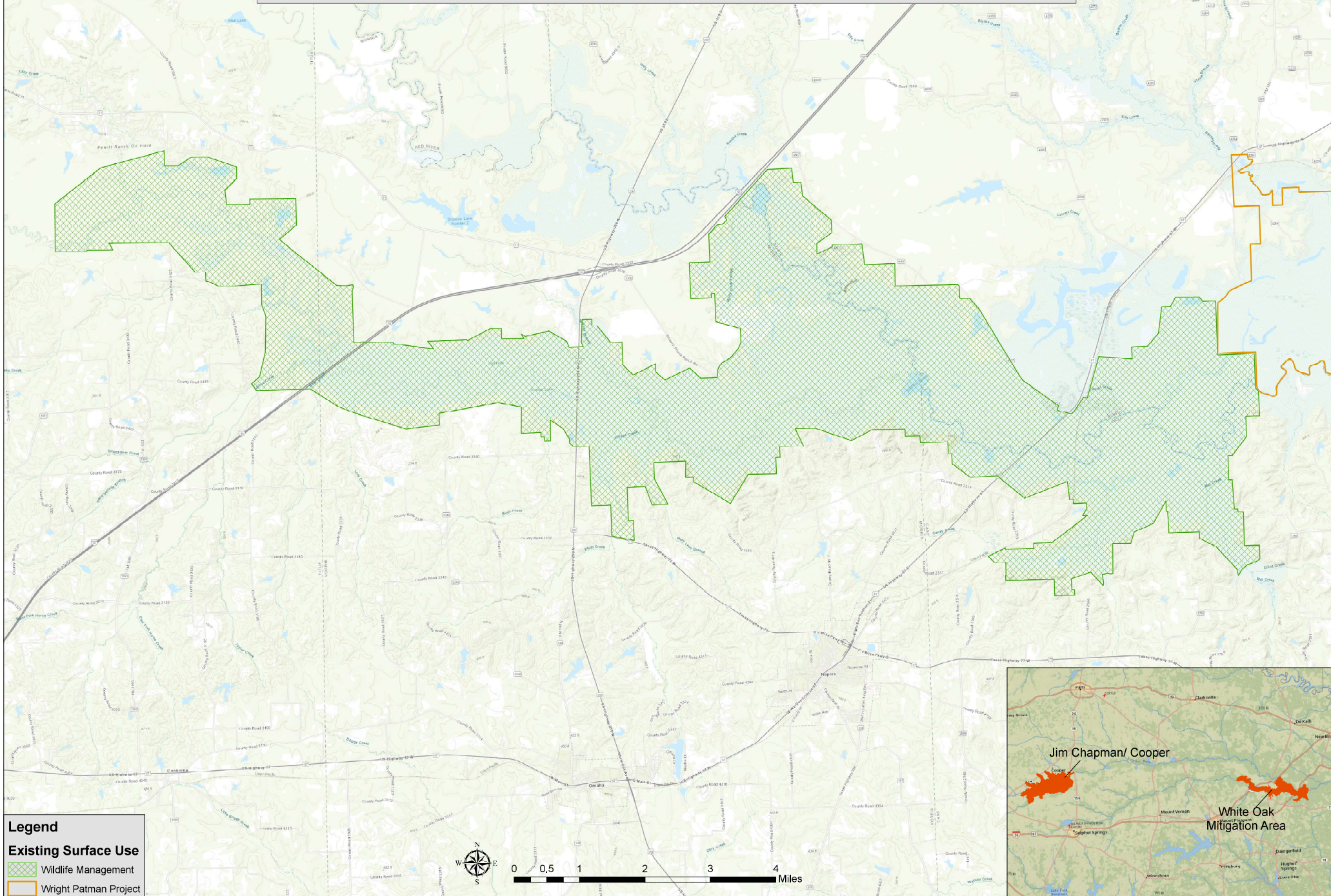
# White Oak Wildlife Management Area/ Cooper Mitigation

US Army Corps of Engineers, Fort Worth District, Piney Woods Region

25,773 acres

Pertinent Data

40.2 square miles





<h1>White Oak Wildlife Managment Area/ Cooper Mitigation</h1> <p>US Army Corps of Engineers, Fort Worth District, Piney Woods Region</p>		
25,773 acres	Pertinent Data	40.2 square miles

<h1>White Oak Wildlife Managment Area/ Cooper Mitigation</h1> <p>US Army Corps of Engineers, Fort Worth District, Piney Woods Region</p>		
25,773 acres	Pertinent Data	40.2 square miles

<h1>White Oak Wildlife Managment Area/ Cooper Mitigation</h1> <p>US Army Corps of Engineers, Fort Worth District, Piney Woods Region</p>		
25,773 acres	Pertinent Data	40.2 square miles

# White Oak Wildlife Managment Area/ Cooper Mitigation

US Army Corps of Engineers, Fort Worth District, Piney Woods Region

Pertinent Data

25,773 acres      40.2 square miles

<h1>White Oak Wildlife Managment Area/ Cooper Mitigation</h1> <p>US Army Corps of Engineers, Fort Worth District, Piney Woods Region</p>		
25,773 acres	Pertinent Data	40.2 square miles

