

**GRAPEVINE LAKE
MASTER PLAN REVISION:
PUBLIC INVOLVEMENT
PRESENTATION
DRAFT MASTER PLAN
REVISION**

U.S. Army Corps of Engineers
Fort Worth District

MISSION / PEOPLE / TEAMWORK

US Army Corps
of Engineers®

U.S. ARMY

Hello, my name is John Mathney, and I work for the US Army Corps of Engineers as the Grapevine Lake Manager. I would also like to introduce members of our project team who were instrumental in revising the Grapevine Lake Master Plan. On behalf of the entire team, welcome to the Public Involvement Presentation for the master plan revision at **Grapevine Lake**. Public and stakeholder involvement is critical to the success of the master plan revision. Thank you for taking the time to attend this meeting.

Purpose of Presentation

- **Announce the availability** of the draft Grapevine Lake Master Plan and Environmental Assessment
- **Highlight proposed changes** in the revised Master Plan
- **Provide instructions** on how to participate in the revision process
- **Encourage** participation
- **Provide links** to documents

The Corps defines a Master Plan as...

“The strategic land use management document that guides the comprehensive management and development of all project recreational, natural and cultural resources throughout the life of the water resource development project.”

Source: Chapter 3 of EP 1130-2-550 available at www.usace.army.mil/library/publications



The purpose of this presentation is to inform the public and stakeholders that a draft revised master plan for Grapevine Lake is available. This presentation will define a master plan, describe the master plan revision process, highlight proposed changes to the Grapevine Lake Master Plan, provide instructions on how to participate in the process, and encourage participation. It will also provide links to documents and details about how to contact the Corps to ask questions.

The information provided through public and stakeholder comments is essential to the decision making process of how project lands and water surfaces will be classified and managed. The Corps wants your ideas and comments. After watching this presentation, review the other material on the project website and send in comments and participate in planning the future of **Grapevine Lake**.

What is a master plan?

- The master plan is a **25 year comprehensive land use management guide** for recreational, natural, and cultural resources. *The previous Master Plan was from 1971 with a Supplement in 2001.*
- **Adheres to Federal laws** to preserve, conserve, restore, maintain, manage, and develop project lands, waters, and associated resources, including the National Environmental Policy Act (NEPA) for environmental stewardship and outdoor recreation
- Provides **land classifications** and **resource management objectives** that are broad and adaptive over time
- Requires and encourages **public involvement**

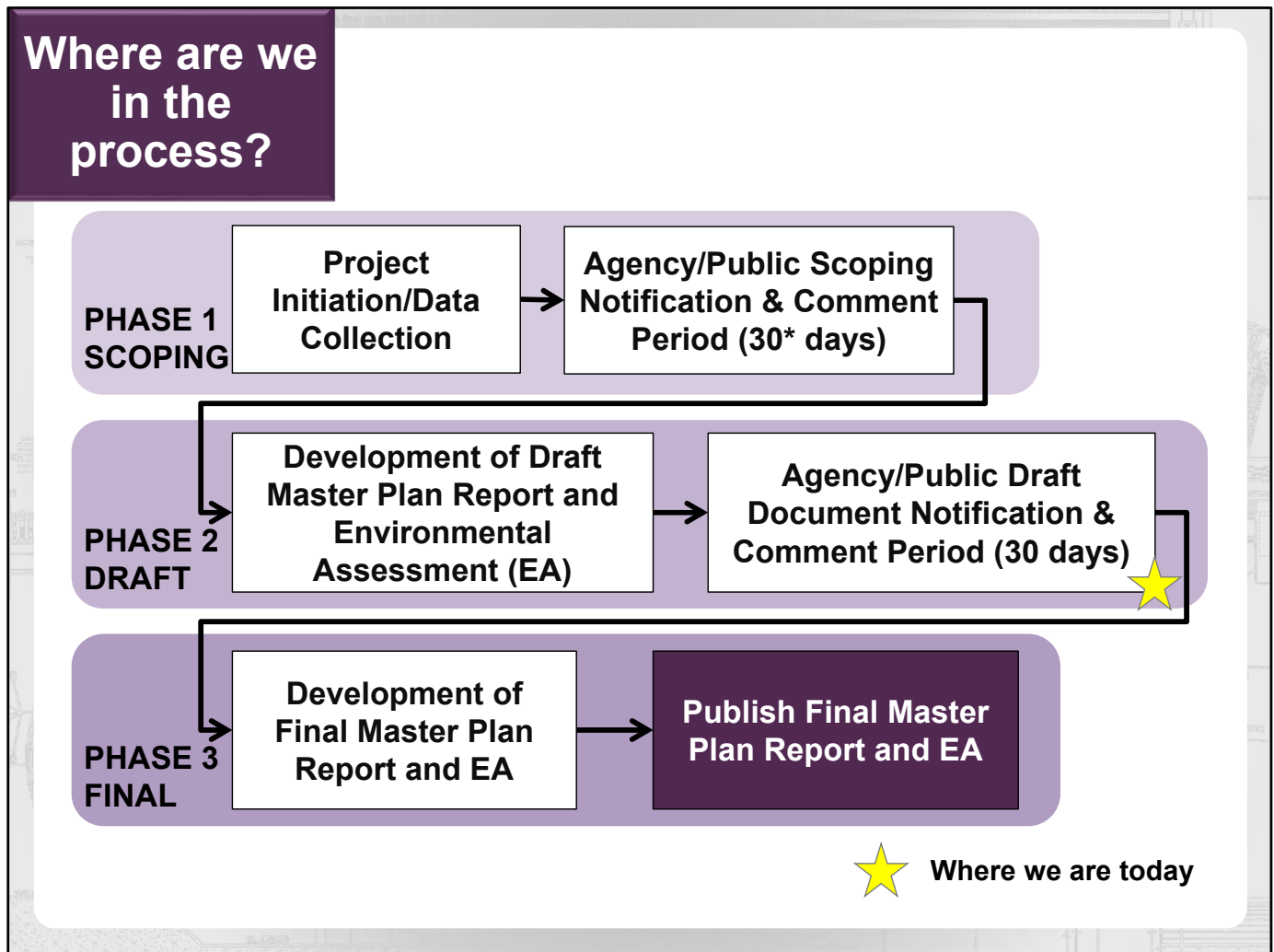


You might be wondering, what is a master plan?

The master plan is the document that will guide the land use and management of the project for the next 25 years, while adhering to all applicable Federal laws including the National Environmental Policy Act, or NEPA. The focus of the plan is the designation of land classifications with corresponding management plans, as well as establishing resource management objectives. *The previous Master Plan was from 1971 with a Supplement in 2001.*

The key to a successful master plan is public involvement.

Participation, in the form of providing written comments, is how you can help.



The revision process includes 3 phases: (scoping, draft and final)

- The scoping phase is when the federal agency asks for initial input from other agencies, citizens and organizations regarding project area, resources and uses. The draft phase is when the Corps asks for public comments on the proposed recommendations in the draft master plan document. This is the phase we are currently in, as noted by the yellow star on the chart.
- The final phase is when the Corps incorporates public comments from the draft review into a final master plan document.
- The plan is published after formal approval by the District Commander.

<div style="display: flex; justify-content: space-between; align-items: center;"> <div style="background-color: #4b2c62; color: white; padding: 10px; text-align: center;"> <h2 style="margin: 0;">What is the revision process?</h2> </div> <div style="background-color: #4b2c62; color: white; padding: 10px; text-align: center;"> <h2 style="margin: 0;">Land Classifications</h2> </div> </div>	
Land Classification	Definition
Project Operations	Lands required for the dam, spillway, levees, office, maintenance facilities and other areas that are used solely for project operations.
High Density Recreation	Land developed for intensive recreational activities for the visiting public, including day use areas and campground areas for commercial concessions, and quasi-public development.
Multiple Resource Management Lands	Low Density Recreation: Lands with minimal development or infrastructure that support passive public recreational use (e.g., trails, primitive camping, wildlife observation, fishing and hunting).
	Wildlife Management: Lands designated for the stewardship of fish and wildlife resources.
	Vegetative Management: Lands designated for the stewardship of forest, prairie, and other native vegetative cover.
	Inactive and/or Future Recreation Areas: Recreation areas planned for the future or that have been temporarily closed.
Environmentally Sensitive Areas	Areas where scientific, ecological, cultural or aesthetic features have been identified. These areas must be considered by management to ensure they are not adversely impacted.
Mitigation	Lands acquired or designated specifically for offsetting losses associated with development of the project. Lands allocated as separable mitigation lands can only be given this classification.

Source: Engineering Pamphlet (EP) 1130-2-550

The Corps defines land classification as the primary use for which project lands are managed. All Federally owned lands are zoned for development and resource management consistent with project purposes.

Utilizing the current Federal guidance, the land classifications are defined as shown in this table.

The Project Operations classification is used solely for lands dedicated for the operation of the project, including the dam, spillway, levees, project office, and other operational features.

The classification High Density Recreation is assigned to lands that are being used for intensive recreational activities, including day use and campground areas.

The Multiple Resource Management Lands allows for the designation of a predominate use and are subdivided into 4 classifications. All 4 classifications essentially allow for similar activities to occur, but are managed with a particular emphasis, including low density recreation, wildlife management, vegetative management, and inactive or future recreation areas.

The protection of Environmentally Sensitive Areas is given priority, and are for lands with unique scientific, ecological, cultural, or aesthetic features. Examples include endangered species habitat, scenic shorelines, and rare and unique plant communities to mention a few.

The Mitigation classification is reserved for lands acquired or designated for offsetting losses associated with the development of the project.

What is the revision process?

Water Surface Classifications

Source: Engineering Pamphlet (EP) 1130-2-550

Water Surface Classification	Definition
Open Recreation	Those waters available for year-round or seasonal water-based recreational use.
Restricted	Water areas restricted for project operations, safety, and security purposes.
Designated No-Wake	To protect environmentally sensitive shoreline areas, recreational water access areas from disturbance, and for public safety.
Fish and Wildlife Sanctuary	Annual or seasonal restrictions on areas to protect fish and wildlife species during periods of migration, resting, feeding, nesting, and/or spawning.



US Army Corps of Engineers®



Water surface classifications are defined much like land classifications in that they reflect how the water surface is to be managed.

The water surface will be reviewed and classified using 4 classifications. The dominate classification is typically open recreation which allows year round use of the water surface. The other 3 classifications place restrictions on the water surface based on safety, access, shoreline protection, and wildlife needs. Restricted water surfaces do not allow access due to safety and security purposes. No-wake water surfaces limit vessel speeds to protect shorelines from wake damage and are used near marina and boat ramps for public safety. Fish and wildlife sanctuary water surfaces can be employed on an annual or seasonal basis to restrict access to protect fish and wildlife species.

What is changing in the plan?

Key Changes:

- The 2001 Supplement introduced **Environmentally Sensitive Areas**, (ESA) but as a hatched overlay of other land and water surface classifications. Following regulations, ESA was changed to a single, distinct land classification.
- The 2001 Supplement introduced **Utility Corridors**. All corridors were reviewed, some more clearly described, and some defined a separate land classification when crossing and ESA in order to reduce future impacts to ESAs.
- **New goals and objectives** were defined in Chapter 3 of the Master Plan.
- **A new resource plan** for each land and water surface classification was developed in Chapter 5 of the Master Plan.
- **New Maps** in Appendix A showing land and water surface classifications and other important maps.



The following are key changes in the new 2022 Master Plan for Grapevine Lake:

- Environmentally Sensitive Areas
- Utility Corridors
- New goals and objectives
- New resource plan
- New maps

What is changing in the plan?

Proposed Land and Water Surface Changes

between the 1971 Master Plan and 2001 Supplement and the 2022 Revised Draft Master Plan

Prior Land Classifications (1971 Plan and 2001 Supplement)	Acres*	Proposed Land Classifications (2022)	Acres
Operations and Maintenance	756	Project Operations	196
Environmentally Sensitive Areas*	2,374	Environmentally Sensitive Areas	4,479
Intense Recreation	2,355	High Density Recreation	2,599
MRML – Low Density Recreation	257	MRML – Low Density Recreation	211
MRML – Wildlife Management Area	1,952	MRML – Wildlife Management	1,259
MRML – Low Density Recreation/Wildlife Management Area	1,048	—	—
Total Land Acres	8,742	Total Land Acres	8,742
Prior Land Classifications (1971 Plan and 2001 Supplement)	Acres*	Proposed Land Classifications (2022)	Acres
Permanent Pool	7,380	Permanent Pool	6,943
—	—	– Restricted	29
—	—	– Designated No Wake	693
—	—	– Open Recreation	6,221
TOTAL Water Surface Acres	7,380	TOTAL Water Surface Acres	6,943

* Land classification acres classified as ESA in the 2001 Supplement were represented as a hatched overlay of other land classifications. To avoid double-counting acres, the land acres are represented as ESA and the water surface as Permanent Pool in this table.

* Some acreage differences are due to improvements in mapping and measurement technology, deposition/siltation, and erosion.



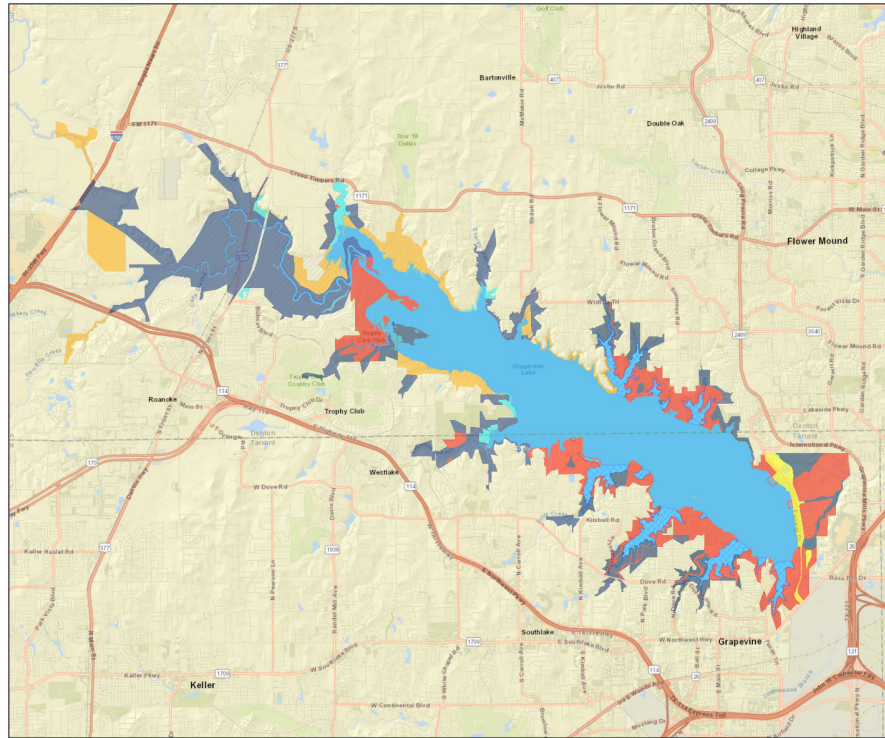
US Army Corps of Engineers®



This table compares the land and water surface changes between the 1971 Master Plan with 2001 Supplement and the 2022 Revised Draft Master Plan. Please note the details within the Master Plan describing variables and factors that led to some of the changes.

What is changing in the plan?

See Appendix A for detailed maps and changes from the 1971 Master Plan and 2001 Supplement.



See Appendix A for detailed maps and changes from the 1971 Master Plan and 2001 Supplement. Here's an example from the maps in Appendix A.

How can I participate?

Submit written comments!

Review all documents available on the USACE website:

<https://www.swf.usace.army.mil/About/Lakes-and-Recreation-Information/Master-Plan-Updates/Grapevine-Lake/>

Documents available on the website include:

- Master Plan documents
- Draft Revised Master Plan
- Project maps
- Comment form

Spread the word by telling your colleagues, friends and neighbors to participate



You can participate in the process by reviewing the documents available on the website and submit written comments. The Corps will only accept comments in written format. The project website is hosting all the documents relevant to the master plan revision, including the current master plan documents, project maps, comment forms with instructions on how to submit a comment, and copies of this presentation for your review. As the project progresses, and new information is developed, it will be posted to this project website, so you may want to bookmark the site for future reference.

We are asking for your help to spread the word to others, letting them know the master plan revision has been initiated, and this is the opportunity to participate in the process.

How can I participate?

Comments will be accepted only **in writing**, some of the methods for submitting a comment include:

- You may **download the comment form** provided on the website, fill it out electronically, and email it to the Corps using the submit button on the comment form
- Or you may **print the comment form** available at the public meeting or provided on the website, fill it out by hand, and mail it to the Corps at the address on the comment form
- Or you may **write a comment or send an email** without using the comment form, and mail or email it to the Corps at the address provided on the website
- Comments are due by close of business on July 10, 2022



The Corps can accept any form of written comments and we have provided a few methods that may make it easier to submit.

You can use one of the comment forms provided at the public meeting and hand it to a Corps representative, mail it to the address on the form, or email it to address provided.

A comment form is available on the website which you can download and fill out electronically. Hit the submit button on the form, and it will autofill the email address, and you can send it in.

Another method is to print the comment form provided on the website and fill it out by hand, or electronically, and mail it into the Corps.

Or you can write a comment in a letter, or email, and send it in. You don't have to use the comment form.

We will except all of these methods, and any other, as long as it's a written comment.

The comment period is open for 30 calendar days from the initial announcement.

Who can I talk to about the plan?

Talk to anyone from the USACE at the meeting to answer your questions.

- Call the Lake Office at:
(817) 865-2600
- Visit the Lake Office at:
110 Fairway Drive
Grapevine, TX 76051
- Email us your questions at:
CESWF-PER-Grapevine@usace.army.mil



If you have questions regarding the master plan, please call or email the following Corps project office or district staff.

You can also send questions to the Email address setup for this project as listed on this slide.

If you need to review a printed copy of the information, please contact the lake office to make your request.

When will the master plan be done?

- Projected milestones/schedule

Milestones	Schedule
Public Notification for Scoping	25 May 2020
Public Comment Period (30 days)	25 May – 26 June 2020
Draft Master Plan/EA Public Notification	9 June 2022
Public Comment Period (30 days)	10 July 2022
Final Master Plan/EA Approved	September 2022

* Projected

The master plan typically takes 18-24 months to complete. This plan encountered some early delays due to the COVID-19 pandemic.

Public notification for scoping was initiated back in May of 2020.

The draft document is now available for public review and a public comment period is open until July 10, 2022.

The final approved master plan and EA is scheduled for September 2022

Thank you for viewing this presentation and participating in the master plan revision process at Grapevine Lake.

Website address:

<https://www.swf.usace.army.mil/About/Lakes-and-Recreation-Information/Master-Plan-Updates/Grapevine-Lake/>

Email:

CESWF-PER-Grapevine@usace.army.mil

Mail:

U.S. Army Corps of Engineers
Attn: Grapevine Lake Manager
110 Fairway Dr.
Grapevine, TX 76151



Thank you for viewing this presentation and participating in the master plan revision process at Grapevine Lake.

Project documents are available at this website.

Please send your comments to the Email address, or Grapevine Lake Office Address listed here.

Thank you.