

## APPENDIX F – PUBLIC AND AGENCY COMMENTS AND USACE RESPONSE

### F.1 COMMENTS FROM INITIAL STAKEHOLDER AND PUBLIC MEETINGS AND USACE RESPONSE

**Table F.1 Public Comments from June 26, 2020 Virtual Public Workshop**

Comment	USACE Response
<p>First, let me express my deep gratitude to the US Army Corps of Engineers for your continued stewardship of our public lands, protection of our residents, and efforts to ensure we meet all federal regulations.</p> <p>With these comments I only wish to convey my sincere hope that with the revisions to the master plan, the USACE will consider the City of Grapevine's extensive public parks and recreation facilities which contribute great value to our city. I would request that revisions to the plan, which will be in effect for the next 25 years, account for any planned growth of the city's parks over that time frame and make every effort to ensure that the city and USACE work in concert on this effort. I appreciate that many of the city's facilities seek to be as environmentally friendly as possible, and encourage continued development of facilities in this manner.</p> <p>Thank you once again for your hard work to keep our city safe and enjoyable.</p>	<p>Concur.</p>
<p>Does this master plan include revision to boat ramps? Are there any considerations to renovating one or two boat ramps so that they may be used when the lake water level is high?</p>	<p>There are currently no new boat ramps planned, and the USACE welcomes the opportunity to work with stakeholders to make improvements to existing boat ramps. Boat ramps at Murrell Park, Silver Lake Park, and Katie's Woods provide access when the water level is high.</p>
<p>Hello I'm [name removed] and I live out by the lake. I would propose putting a disc golf course up. It would be a great space for the public to use to get in exercise while having a great time! It would also be a minimal maintenance need. Wouldn't take a lot of money to maintain or upkeep. I hope you consider my suggestion. Thank you for taking the time to read my message!</p>	<p>There are currently no concrete plans for a disc golf course, however the City of Grapevine has discussed the possibility of putting one in their parks. Trophy Club Park has one and Twin Coves Park and Rockledge Park have some, but not a full 9 holes course. Sports fields like disc golf courses could be appropriate in areas classified as High Density Recreation as part of a larger comprehensive development or large lease area.</p>

Comment	USACE Response
<p>I have lived in Grapevine since 1984. I love the lake and use it almost daily. My house backs up to the Corps land and I frequently ride the mountain bike trails in addition to having a boat at Scott's landing. Please do not change what is not broken.</p> <p>Keep the protected areas protected and in the high use areas perhaps construct better facilities for the crowds. Since Covid19 I am seeing record breaking crowds on the shorelines. People need this escape and the serenity the lake provides. As a teen who grew up having bonfires at McPherson Slough (we call it CCC for some reason) I did not agree with the City of Grapevine closing Katie woods.</p> <p>Another suggestion - take Meadowmere and make it a public park. Get rid of the squatters that camp there and act like it is their own (not the campground campers, but the hosts). They are probably from California. Have extra services available for purchase, but make access free?</p>	<p>There are currently no plans for new facilities, but the USACE welcomes the opportunity to work with stakeholders to provide improvements at popular recreation areas.</p> <p>Due to limited resources, fees are often required to maintain facilities.</p> <p>There are limits on how long individuals can stay in USACE campgrounds. Camp hosts can stay for longer periods but provide volunteer services including maintenance and security.</p> <p>For specific comments or questions on these topics, please contact the Grapevine Lake office or Fort Worth District office.</p>

- (1) The City of Grapevine lease must be terminated. City of Grapevine is incapable of providing oversight and willfully violates federal law.
- (2) provide additional funding and staff for USACE to provide adequate enforcement of regulations on leased properties.
- (3) Enforce leash laws!
- (4) Prohibit alcohol consumption on all leased properties.
- (5) prohibit temporary concession agreements that result in unsightly storage of materials.
- (6) Enhance the review of financial agreements between cities and USACE. City of Grapevine is likely misreporting funds to the USACE.
- (7) require environmental reviews before allowing expanded use of park spaces.
- (8) require the development of parking areas before expanding the use of park spaces.
- (9) require the completion of traffic studies before expanding use of park spaces.
- (10) Prohibit cities from posting no trespassing signs on public lands without written approval from USACE.
- (11) remove the lethal shade structures in oak grove park. Federal funds were likely fraudulently obtained. Additionally, during high water, and without buoy markers, the submerged structures are a fatality waiting to happen.
- (12) stop dumping untested sand in flood zones. What toxins are in the illegally dumped sand?
- (13) Prohibit the use of fertilizers and chemicals in flood zone areas. During high water these chemicals leach into the lake!
- (14) Prohibit parking and then enforce no parking on the edge of park roads. Parking on the grass on the edge of the road is a hazardous to park users issue.
- (15) Prohibit and enforce no parking in grassy area spaces.
- (16) Prohibit loud speakers and announcements at recreational facilities in public land spaces. These loud speakers create a noise nuisance in adjoining neighborhoods.
- (17) Prohibit use of metal bats at ball parks as they create a noise nuisance in adjacent neighborhoods.
- (18) Require the installation of water and restroom facilities at all trailheads.

These topics are outside the scope of the Master Plan.

- (1) For concerns with the existing lease, please contact the Grapevine Lake office or Fort Worth District office.
- (2) The USACE has a limited budget for both personnel and enforcement. For specific concerns, please contact the Grapevine Lake office or Fort Worth District office.
- (3) Leash laws are enforced, but enforcement is limited due to limited resources. For specific concerns, please contact the Grapevine Lake office or Fort Worth District office.
- (4) The USACE does not prohibit alcohol consumption on lease or USACE-managed areas. For specific concerns or suggestions, please contact the Grapevine Lake office or Fort Worth District office.
- (5) If concessions result in unsightly storage, please contact the Grapevine Lake office or Fort Worth District office.
- (6) To provide additional details or for specific concerns, please contact the Grapevine Lake office or Fort Worth District office.
- (7) Any new parks or significant improvements to existing parks already requires an environmental review.
- (8) Parks must be developed to include both recreation areas as well as access including parking.
- (9) There is currently no budget for traffic studies at Grapevine Lake parks. However, the USACE welcomes the use of traffic studies by stakeholders.
- (10) Such signs should be coordinated through the USACE. For specific concerns, please contact the Grapevine Lake office or Fort Worth District office.
- (11) For immediate safety concerns please contact the Grapevine Lake office or Fort Worth District office.

	<p>(12) For concerns with the sand at swim beaches, please contact the Grapevine Lake office or Fort Worth District office.</p> <p>(13) The USACE follows best management practices which includes training on proper fertilizer and herbicide application. For concerns or questions regarding fertilizer or herbicide application, please contact the Grapevine Lake office or Fort Worth District office.</p> <p>(14) Vehicles mainly park in designated parking spots but occasionally park in other locations due to overflow or lack of nearby parking in some locations. Park users must not impede traffic or become an obstacle to others' safe vehicle operations. For immediate safety concerns please contact the Grapevine Lake office or Fort Worth District office.</p> <p>(15) Unpaved areas should not be used as designated parking areas.</p> <p>(16) Park users should not have unnecessarily loud music that is a nuisance to other users. Announcements are sometimes necessary to communicate important messages to park users. For immediate questions or concerns please contact the Grapevine Lake office or Fort Worth District office.</p> <p>(17) The USACE has no guidelines restricting the types of bats. However, there may be rules and restrictions by the lease holders who manage various sports fields. Please contact the appropriate lease holder to discuss rules and regulations at specific leased parks. For other questions or concerns please contact the Grapevine Lake office or Fort Worth District office.</p> <p>(18) The USACE has a limited budget for making many types of convenience improvements. Sometimes trailheads are very far from existing water and/or sewer lines, and adding new lines would be extremely expensive.</p>
--	---------------------------------------------------------------------------------------------------------------------------------------------------------------------------------------------------------------------------------------------------------------------------------------------------------------------------------------------------------------------------------------------------------------------------------------------------------------------------------------------------------------------------------------------------------------------------------------------------------------------------------------------------------------------------------------------------------------------------------------------------------------------------------------------------------------------------------------------------------------------------------------------------------------------------------------------------------------------------------------------------------------------------------------------------------------------------------------------------------------------------------------------------------------------------------------------------------------------------------------------------------------------------------------------------------------------------------------------------------------------------------------------------------------------------------------------------------------------------------------------------------------------------------------------------------------------------------------------------------------------------------------------------------------------------------------------------------------------------------------------------------------------------------------------

Comment	USACE Response
<p>As a resident of Grapevine for more than 20 years, I would like to see a bike/running/walk path trail around the lake with access for people of all ages. I would also like to see restaurants with views of the lake.</p>	<p>These topics are outside the scope of the Master Plan. The USACE has a limited budget for creating new trails and connecting existing trails but would welcome the opportunity to work with stakeholders to make additional improvements including a trail around the lake. However, some areas that are not classified as HDR would only allow soft-surface (unpaved) trails. Restaurants could be part of a larger comprehensive resort within an HDR area, but would be more appropriate to place off USACE property to provide more access to recreation and natural resources at Grapevine Lake.</p>
<p>As it relates to the Grapevine Lake Master Plan:</p> <p>My family and I have lived at 117 Sycamore Court for the last 4 years, which has Cable Branch (creek) running beside it. I've been watching wildlife and birds come through and nest in and around our 1/2 acre. I've attached a list of my observations, most of which I have pictures of. I'm sure that much of the lake has migratory birds and thriving wildlife, but thought I would underscore that Cable Branch is also vital to them. I've been amazed at the number of migratory birds come through, nest, or stay on our small plot.</p> <p>I'm sending this as I know the city was considering building trails around Cable Branch and I wanted to make sure that the wildlife is preserved. I thought that as the master plan is re-built, these details might prove helpful.</p> <p>Please let me know if you have further questions.</p>	<p>The USACE is dedicated to protecting and preserving natural resources around Grapevine Lake. Any new trails or significant trail improvements would need to undergo an environmental review to minimize the impact to natural resources.</p>

Comment	USACE Response
<p>Grapevine Lake is such a precious place that should be treasured for the natural beauty. Please consider keeping it as wild as possible. There are plenty of soccer fields, baseball fields and concrete that have been put in and taken away the wildness from the creatures that live here.</p> <p>With all of the residential and commercial development around Lake Grapevine the wildlife have no where to go, especially when the lake level is high. Many human residents are new to the area and tend to kill any creature that ventures in their yard. Any snake, possums, etc. Many residents go into hysteria when they see a coyote. If we limited the amount of development, we could enjoy the wildlife for years to come. Please consider not destroying any more habitat. The lights at Meadowmere and the other parks at night for various sports are invasive to everyone. The fireworks, are terrifying to the wildlife and resident animals. Please limit this noise pollution to special holidays. There are places on the lake that could be managed better. For example the people that had set up living quarters and managed the entrance to Meadowmere had their stuff all over the park. It was truly abuse of power turning the land into their own personal junkyard and could not be enjoyed by all. It was so trashy. In addition, The park at Lake View needs to be managed better in terms of Fishing licenses, people throwing trash everywhere, camping out, etc.</p> <p>Please keep Grapevine Lake clean and wild!</p>	<p>Concur. The Master Plan has placed land in LDR, WM, and ESA classifications to conserve the natural resources in those areas. Many existing park leases already include sports fields or have other types of intensive recreation, but USACE guidance prioritizes natural resource-based recreation to sports fields.</p> <p>Many of these topics are outside the scope of the Master Plan. For questions or concerns about light pollution, noise pollution, litter, or other concerns; please contact the Grapevine Lake office or Fort Worth District office. The USACE has a limited budget and requires that lease holders comply with various rules and regulations. The USACE also welcomes the opportunity to partner with volunteer or stakeholder groups to remove litter or make other park improvements.</p>
<p>I love Grapevine Lake and especially love the 3 trails that allow mountain biking. I would ask that you please maintain mountain biking on Northshore trail, Knob Hill trail and Horseshoe trail.</p> <p>Mountain bikers and DORBA are critical to managing, maintaining and protecting these trails. Thousands of people use the DORBA app to check trail conditions and thus help people stay off the trails during wet conditions.</p>	<p>Mountain biking can be somewhat destructive to natural resources and has been consolidated within HDR areas in order to minimize the impact on natural resources. The USACE appreciates the work done by DORBA and welcomes ongoing partnership to maintain the trails and minimize the impact to natural resources.</p>
<p>Not sure this will pertain to you guys, if not, then please guide me to the appropriate resources. We are Dallas natives, and 30 years ago had a sailboat on Lake Grapevine. We just moved our boat from Possum Kingdom, and have it at Scott's Landing. We love the proximity of Lake Grapevine, we can be at the dock or on the boat in 15 minutes. My concern are the jet skiers on Lake Grapevine. Several times we have had jet ski's get too close to our wakeboarder. I assume these users may be rental users, and do not know that they should not be close to a wakeboarder. If there is anything you can do to encourage the people that rent out jet skies to warn their rental users, or if you guys are out and about, to please give the users guidelines on the distance between a jet skier and wake boarder. Signage would be great too at the ramps.</p>	<p>These topics are outside the scope of the Master Plan. Boaters and personal watercraft operators must comply with Texas state boating laws. For immediate safety concerns please contact the Grapevine Lake office or Fort Worth District office.</p>

Comment	USACE Response
<p>Thank you for the opportunity to provide input on the revision of the Master Plan for Grapevine Lake. Unfortunately, it appears that the SUBMIT button on the comment form is not functioning. I could see no evidence that my message had been sent, though I clicked on SUBMIT twice. Just in case, here are the comments I attempted to send:</p> <p>We have lived at the edge of Oak Grove Park for 33 years and, except when on vacation, have walked through the park and adjacent Horseshoe Trails area almost daily. When Grapevine Parks and Recreation began the "Adopt-A" program, we adopted a section of Oak Grove Park and have picked up trash regularly for many years. Over the years we have watched, with increasing dismay, as open green areas have been developed in various ways: playgrounds have been installed, formerly open-access areas are fenced off from the general public for fee-based ball fields, and parking lots have been added/expanded. The pocket woods around Oak Grove Park have suffered considerably from poor stewardship: the clearing of underbrush, the cutting of trails and clearing of spaces for Halloween events and the structures used for them (now, thankfully, relocated), and the trash generated by soccer field users clutters the woods. Summer camps and the associated equipment installations have had some negative impact and generate significant additional trash. Likewise, in recent years, the promotion of Horseshoe Trails by the off-road bicycle association and resultant increased usage, has resulted in many new trails being cut through the woods by cyclists, which in turn has caused significant erosion and damage to a fragile ecosystem. The increased cycle traffic is also problematic for walkers and has dramatically impacted wildlife populations, already stressed by heavy flood years and the resultant degradation of the lakeshore. Much more needs to be done to restore and protect these areas and the wildlife that depends on them. Much more needs to be done as well to reduce the amount of trash generated and abandoned by increased usage of the parks. Of great concern is the recent news that that firearms might soon be permitted on Corps property. The possibility is shocking. Alcohol is not permitted; motor vehicles are not permitted; excessive noise is not permitted; what possible justification is there for permitting firearms in a park?</p> <p>Thank you again for the opportunity to provide user input. I look forward to updates and would be happy to respond to any additional requests for public input.</p>	<p>Some features of the form only work when viewed in Adobe Acrobat or Acrobat Reader, and some browsers may not render the forms completely.</p> <p>Many areas have been classified as LDR, WM, or ESA in order to protect or preserve the natural resources that exist at Grapevine Lake. Intensive recreation is restricted to areas classified as HDR in order to consolidate impacts to the lake, land, and resources. Since Grapevine Lake is within a rapidly growing metropolitan area, the HDR areas will likely see more users and a greater impact including traffic and trash. The USACE expects lease holders to maintain facilities, minimize litter, and reduce impacts to the natural resources. The USACE also welcomes the opportunity to partner with other stakeholders to remove litter and provide other improvements.</p> <p>Alcohol consumption is allowed except in areas where it is forbidden, while motor vehicles are permitted on roads and in other designated areas.</p> <p>The topic of firearm possession is not part of the Master Plan. The USACE has recently updated its policy regarding firearm possession on USACE property. The policy is currently under review and legal challenge and may change after this Master Plan is adopted. Currently, statewide firearm permits or licenses are not valid on USACE property, and firearm users must apply for an individual firearm permit from the Fort Worth District office. Please contact the Grapevine Lake office or Fort Worth District office to get updated information or ask questions about firearm possession on USACE property.</p>

Comment	USACE Response
<p>I would like to offering the following comment on the Grapevine Lake Master Plan for the Corp property, as a lifelong resident of Grapevine. It seems like for decades the intent of the city of Grapevine has been to get more people to the lake, and to get as much development on the Corp land as possible. This is the exact opposite of what should be happening. The land around Grapevine Lake should be preserved to as high a degree possible, and should remain a green space with far less human traffic, and far more wildlife.</p> <p>The plan should be revised to prohibit any additional development of parks, sports fields, or trails and what exists should be slowly transformed into a greener space. This would help preserve the areas nature while also not forcing the taxpayer to pay hundreds of thousands to repair and rebuild facilities that end up under water almost every year due to flooding.</p>	<p>Many areas have been classified as LDR, WM, or ESA in order to protect or preserve the natural resources that exist at Grapevine Lake. Intensive recreation is restricted to areas classified as HDR in order to consolidate impacts to the lake, land, and resources. Since Grapevine Lake is within a rapidly growing metropolitan area, the HDR areas will likely see more users and a greater impact within those HDR areas. New or improved parks, sports fields, and paved trails will be limited to areas classified as HDR. Soft surface (unpaved) trails could be included in LDR, WM, or ESA to provide access to natural resources while minimizing impact from recreation. There are no plans to convert existing parks or intensive recreation within HDR areas to green space or other natural areas.</p>
<p>At first I would like to thank you for giving us the opportunity to send in our comments &amp; suggestions for the Lake Grapevine Masterplan Revision.</p> <p>Due to an error I wasn't able to use the comment form so please find below my comments:</p> <ul style="list-style-type: none"> <li>• Please keep the natural areas as they are now around the lake, don't allow new residential or commercial buildings or structures in these areas and in the flood zones. Lake Grapevine hosts a unique environment for all kinds of Flora &amp; Fauna and we need to cherish that for both nature &amp; the people living and recreating around and in the lake. Especially since more land is getting used for commercial &amp; residential purposes in the DFW area, places like this are really needed for nature. I would suggest to create nature preserve areas and create a healthy balance between nature &amp; land use.</li> <li>• Create zones in Lake Grapevine where motorized boats (mostly speed boats from a certain class) are not allowed, this to create a refuge area for water birds and other fauna during the busy recreational season when there's a lot of human activity on the water. Motorized zones would make it also more safe for other activities such as paddle boarders, kayaking, fishers and swimmers. The amount of speed boats on Lake Grapevine has excessively grown and is a danger for other people using the lake.</li> <li>• Please create a full biking lane network around the lake, connect with existing bike lanes in the different cities. Currently there's no bike lane for example at or around the Grapevine</li> </ul>	<p>Some features of the form only work when viewed in Adobe Acrobat or Acrobat Reader, and some browsers may not render the forms completely.</p> <p>The Master Plan has taken additional steps to protect natural areas by adding to land classified as ESA, WM, and LDR while consolidating intensive recreation into HDR areas. Flood zones and riparian corridors have been given special consideration in creating new ESAs and protecting their immense habitat value. Homes cannot be built on USACE property, and any commercial building would need to be part of a lease or larger comprehensive development and would need to be included within areas classified as HDR.</p> <p>There are no known rookeries at Grapevine Lake where a large number of birds congregate other than shallow shorelines and wetlands where boats already have</p>



Comment	USACE Response
<p>Dam or on the west / north-west side of the lake (Roanoke). The amount of people biking has excessively grown in the past years and I think this is a great opportunity to accommodate this.</p> <ul style="list-style-type: none"> <li>• Please perform dredge work in certain areas of the lake, especially locations where harbors are located, boat ramp areas , swimming areas and where creeks flow into the lake. Usually these locations have a lot of contaminated sludge / mud from boats and from the surrounding land (for example residential waste such as pesticides etc. wash in the lake during heavy rains). This sludge / mud is not good for the water quality and builds up in the years.</li> </ul> <p>I'm not sure if this is also a subject that supposed to be suggested to this email address, but I would like to bring the following item to your attention consider the subject COE2018-0008.</p> <p>The U.S. Army Corps of Engineering is considering a change in its firearms regulations that would ease the restriction on an individual carrying or transporting firearms within the Corp's managed land (Grapevine and Lewisville Lakes).</p> <p>The rule change would align the CORP's firearms policies with the laws of state and local governments as well as those of other federal land management agencies. Under the proposal, people would no longer be required to obtain written permission to carry firearm/s on Corp's property.</p> <p>We find this change would be so detrimental to our peace of mind and safety, the delight of walking in the woods with family, friends, kids and pets. In the wooded areas we could so easily be a mistaken for a moving target, regardless why are guns needed on Corp property. I do acknowledge that certain areas are designated for deer hunting during the season which is fine but guns are not needed where we play, hike, picnic, explore nature, swim and boat and bask in the wildlife. Therefore I officially, also in behalf of my wife and child, protest against this new regulation. Please take our concerns serious. Thank you.</p> <p>Thank you for your time to go over our comments / suggestions.</p>	<p>limited access. Motorized boats and personal watercraft usage are extremely popular, and operators must comply with Texas state boating laws. For immediate safety concerns please contact the Grapevine Lake office or Fort Worth District office. The City of Grapevine has three paddling trails per their website, and the Town of Flower Mound is looking to add some with their master plan update. The USACE does not currently have any plans for new paddling trails at Grapevine Lake, but the USACE would welcome the opportunity to partner with local city or non-profit stakeholders to provide and maintain some at Grapevine Lake.</p> <p>Due to funding and resource limitations, there are no plans for additional trails at Grapevine Lake. However, the USACE welcomes the opportunity to partner with stakeholders to provide and maintain trails and to connect to regional trails off USACE property.</p> <p>The topic of firearms possession on USACE property is not part of the Master Plan. The USACE has recently updated its policy regarding firearm possession on USACE property. The policy is currently under review and legal challenge and may change after this Master Plan is adopted. Currently, statewide firearm permits or licenses are not valid on USACE property, and firearm users must apply for an individual firearm permit from the Fort Worth District office. Please contact the Grapevine Lake office or Fort Worth District office to get updated information or ask questions about firearm possession on USACE property.</p>

Comment	USACE Response
<p>I would like to see some of the Corp property opened to use for off-road bicycles. Some of the existing equestrian trails could be used for this. More people in the area have bicycles than horses.</p>	<p>Off-road biking can be somewhat destructive to natural resources and has been consolidated within HDR areas in order to minimize the impact on natural resources. DORBA has created and maintain some off-road bicycle trails at Grapevine Lake. The USACE appreciates the work done by DORBA and welcomes ongoing partnership with them or other stakeholders to maintain the trails and minimize the impact to natural resources.</p>
<p>As an equestrian club (<a href="http://www.cteta.org">www.cteta.org</a>) we are completely vested in the equestrian trails surrounding Lake Grapevine. We promote, maintain and use these trails extensively. We would like these trails to continue as equestrian/hiking trails only (no bikes). We would like to connect the Cross Timbers trail and Rocky Point Trail via an existing outlined trail/path thru High Meadows and Chimney Rocky neighborhoods. Trail travels north from the parking area on High Road, to High Trail, to Chimney Rock Road. Access will require an addition of trail from the Chimney Rocky gate to existing Cross Timbers trail. Improve access parking for horse trailers on the Rocky Point trail. We will continue to support the Lake Grapevine equestrian trails: Rocky Point, Cross Timbers, Trophy Club and Bob Jones/Southlake.</p>	<p>Grapevine Lake provides recreation opportunities for a wide variety of users and provides multi-use and equestrian trails for users. The USACE appreciates the work done by CTETA and welcomes ongoing partnership with them or other stakeholders to maintain the trails and minimize the impact to natural resources. The USACE welcomes the opportunity to work with cities, organizations, and other stakeholders to make improvements to new or existing facilities at Grapevine Lake that align with the goals and objectives of the Master Plan.</p>

Comment	USACE Response
<p>The grapevine master plan needs to be amended for the needs/wants of its users.</p> <p>1: the hiking recreational use needs to be improved, and made safer. The north shore trail cyclist believe they “own” the trail. All of the bikes need to be shifted to one lane of the trail, and another trail defined for them. And then the north shore trail for hiking use only.</p> <p>2: the ease of use for on lake dining, entertainment needs to be more available. More ability to build and operate restaurant facilities with day use docks. For example, change all of sunfish dr. In grapevine to a public use area, with new restaurants with docks. Allow the flower mound lakeside to have easy access to these kinds of facilities also. Or allow the Gaylord Texan to have a day use dock.</p>	<p>1. Grapevine Lake provides recreation opportunities for a wide variety of users and provides multi-use that include some trails catered to off-road bicycle users. All users must comply with safety rules and guidelines. For immediate safety concerns please contact the Grapevine Lake office or Fort Worth District office.</p> <p>2. Many commercial establishments such as restaurants are typically not compatible with the goals and objectives of the Master Plan in providing natural resource-based recreation. However, some have been included in larger comprehensive developments, but in all cases must be located in areas designated as HDR. The USACE does not allow new private docks on Grapevine Lake, but does provide courtesy docks and allows larger marinas within HDR lease areas. This helps to reduce and consolidate the negative impacts that docks can have on the lake. For more information about leasing recreation space within HDR areas please contact the Grapevine Lake office or Fort Worth District office.</p>
<p>I would like to see more green spaces devoted to recreation and learning and more preserved lands for wild species. It seems like Grapevine is being depleted of its verdancy. The lake area can attract people and wildlife with many benefits, including more physically active citizens, as it encourages exercising; provide spaces for socialization, decrease noise and air contamination, improve immunity, reduce stress and attracts tourism and help wildlife thrive. I hope you consider the preservation of the ecosystem as an asset to Grapevine. Thanks for reading.</p>	<p>Concur. The USACE has designated areas as ESA, WM, and LDR while consolidating intensive recreation within HDR in order to reduce the impact of intensive recreation and preserve undeveloped space at Grapevine Lake.</p>

Comment	USACE Response
<p>First off, thank you for the opportunity to comment on this wonderful asset for the area.</p> <p>My family and I live in the Lewisville and use Grapevine Lake regularly. We keep a 25' sailboat at Twin Coves Marina and launch a powerboat at Twin Coves Park. We have two comments (hopefully this is the right forum):</p> <ol style="list-style-type: none"> <li>1. The paved road within Murrell park from the Simmons Rd. gate to the marina are in need of resurfacing. There's several areas where the edges have eroded making two lane traffic challenging on the blind corners. This is especially a safety issue when two vehicles approach head on with trailers in tow. There's also potholes, but those are more of a nuisance than a safety concern.</li> <li>2. Mooring balls near twin coves park. Would it be possible to setup a few temporary use mooring balls in the area highlighted on the attached picture? We anchor regularly in the north/west channel of twin coves. We've had our anchor foul many times in that area, having to cut the anchor away twice. On one occasion, I pulled up what looked like a fish habitat made of a vertical steel pipe with horizontal pipes running through it. Not only does this area damage the boater's gear, but the habitat as well. On peak days/times the anchor field of boats is scattered with some anchoring in the middle of the channel with swimmers in the water, making safely navigating the area challenging. If there were a mooring field, I think this would mitigate both of these hazards in that area.</li> </ol> <p>Thank you again for the opportunity to comment. Keep up the great work!</p>	<p>These are not topics covered in the Master Plan.</p> <ol style="list-style-type: none"> <li>1. Due to resource limitations, roads are maintained to provide access to recreation rather than what is seen in most urban and suburban roads. To report excessive road damage and for immediate safety concerns, please contact the Grapevine Lake office.</li> <li>2. Due to resource limitations, there are no plans to provide new mooring facilities at Grapevine Lake. However, the USACE would welcome the opportunity to partner with cities or other stakeholders to provide and maintain such features in appropriate locations. In addition, there are both fish habitats and debris at various locations around Grapevine Lake, and boaters should take precautions and use the lake at their own risk.</li> </ol>
<p>I'm president of the Hidden Lake HOA. We are bordered by Snaky Lane to the East, Silvercrest to the West, and Kimball to the North.</p> <p>The proposed Master Plan says that the area along Snaky Lane will be for "intense recreation".</p> <p>Can you please explain what "intense recreation" means?</p>	<p>Intensive recreation includes day use areas, campgrounds, marinas, and related concession areas. Such recreation is provided only in areas designated as HDR which are described in 4.2.3 and 5.3 of the Master Plan. At the initial workshop there was not yet a proposed Master Plan. The area you described was already designated for intensive recreation and this Master Plan designates it as HDR to include intensive recreation. Intensive recreational features already located within the park include parking and trailhead, paved trails, pedestrian bridge, park benches, and shade structures.</p>

Comment	USACE Response
<p>Please do not take away the public lands already designated for wildlife animals. Take Pride in our Texas wildlife animals &amp; birds! It's important &amp; essential for the environment to maintain, perserve &amp; protect precious wildlife animals/birds lives in their own natural habitats. The environment will thrive naturally with wildlife habitat. All lives matters and Grapevine government &amp; residents should set the outstanding examples to other cities the respect towards the lives of wildlife animals/birds. Taking away their natural habitats will only cause their extinction. Let not lose what little what we already have. In fact, I would like to motion to increase public land for wildlife animals/birds; perhaps a Grapevine Public Land Natural Wildlife Sanctuary or Reserve. Because we care about ALL Lives.</p> <p>Thank you for sharing your time to consider my request.</p>	<p>Concur. The USACE has designated areas as ESA, WM, and LDR as well as consolidate intensive recreation on areas classified as HDR. This helps preserve and protect the natural resources at Grapevine Lake. Although not part of the Master Plan, the USACE would welcome the opportunity to partner with local cities or stakeholders to help preserve the natural resources at Grapevine Lake.</p>
<p>I recently review the proposed Grapevine Lake Master Plan Revisions and I wanted to comment on the section referencing environmentally sensitive areas.</p> <p>I have observed Grapevine Lake closely for a period of two decades and it appears that there is inadequate protection of environmentally sensitive areas adjoining the Town of Trophy Club.</p> <p>Specifically, the Town of Trophy Club claims to have no control over the Trophy Club Municipal Utility District (MUD), which recently expanded its wastewater treatment plant with the full cooperation of the Town. The Trophy Club MUD has repeatedly released untreated sewage into these environmentally sensitive areas in violation of TCEQ rules yet residents of the Trophy Club Public Improvement District (PID) have no representation on the Trophy Club MUD and no standing to address these issues. Residents referencing the jurisdictional requirements of the Town's Stormwater Management Plan, Planning and Zoning Requirements, etc. are being told that the Town has absolutely zero control over the MUD when in fact the only contract in existence is in fact between the Town and the MUD.</p> <p>Residents of Trophy Club, primarily those in the PID are reliant on the Town of Trophy Club to enforce its rules and exercise its jurisdiction and contractual remedies with the Trophy Club MUD. It appears that the repeated claims made by Trophy Club elected officials that the Town has no control over the MUD do not have any factual basis and that this hands off approach is resulting in intermittent contamination of the Trophy Club Storm Sewer System (MS4) and Grapevine Lake with untreated sewage from Trophy Club MUD operations.</p>	<p>This topic is not covered in the Master Plan. At the initial workshop there was not yet a proposed Master Plan Revision. The one available at the workshop was the existing Master Plan with current land and water surface classifications. There should not be any untreated sewage released into ESA areas or at any location at Grapevine Lake. Please contact the Grapevine Lake office or Fort Worth District Office with concerns and questions including the possibility of untreated sewage discharge as well as the Texas Commission on Environmental Quality.</p>

Comment	USACE Response
<p>Dear Sirs, after paying to have my boat transported to Lake Grapevine from Joe Pool Lake, after all of the marinas there were destroyed by storms. I learned that the City of Trophy Club dumps it's sewage into Lake Grapevine. Now I know why all of the white fiberglass boats are all always stained brown at the waterline. Is there any way that can be diverted directly to the Trinity River bypassing Lake Grapevine? Thank you for your time and consideration.</p> <p>Source:  <a href="https://apnews.com/0b2d916cd5f74015b8226c15931f0774">https://apnews.com/0b2d916cd5f74015b8226c15931f0774</a></p>	<p>This topic is not covered in the Master Plan. There should not be any untreated sewage released at Grapevine Lake. Please contact the Grapevine Lake office or Fort Worth District Office with concerns and questions including the possibility of untreated sewage discharge as well as the Texas Commission on Environmental Quality.</p>
<p>Please do not take away the current designated land for wildlife animals &amp; birds. We take PRIDE in our Texas wildlife. Its important &amp; essential for the environment to maintain, preserve &amp; protect precious wildlife animals/birds lives in their own natural habitats. The environment will thrive naturally with wildlife habitat. All lives matters and Grapevine Government &amp; Residents should set outstanding examples to our cities to follow for the RESPECT towards the lives of wildlife animals/birds. Reducing their natural habitats will only cause their extinction. Let not lose what little what we already have. In fact, I would like to motion to increase land reserved for wildlife animals/birds; perhapse a Grapevine Reserve or Sanctuary Land for natural wildlife. Because we care about ALL lives. Lets keep NATURE at its BEST.</p>	<p>Concur. The USACE has designated areas as ESA, WM, and LDR as well as consolidate intensive recreation on areas classified as HDR. This helps preserve and protect the natural resources at Grapevine Lake. Although not part of the Master Plan, the USACE would welcome the opportunity to partner with local cities or stakeholders to help preserve the natural resources at Grapevine Lake.</p>
<p>Regarding the recreational beach area at Oak Grove closest to the volleyball court and pavillion wrapping around east towards the baseball parks. I've always wanted to get a heavy machine grader out there and smooth all that out from the volleyball court area all the way east as far as possible to mimic a real beach. It's always been rough uneven and little cliffs at places making the area unusable at certain water levels. Thank you for considering it.</p>	<p>This topic is not covered in the Master Plan. For comments or questions on park maintenance and improvements, please contact the Grapevine Lake office.</p>
<p>We are the Beach Family and live on Sherwood Drive in Trophy Club. We are writing to provide input regarding the Grapevine Lake Master Plan. We understand that there are no revisions planned at this time.</p> <p>Our street and home are adjacent to the Corps land in Trophy Club near the end of Trophy Club Dive on the west side of town. This area has been deemed environmentally sensitive per the Corps map. We have heard much discussion about a "Loop Road" project that has been proposed for our town and we are opposed to this road. This road would connect the east and west sides of Trophy Club and run directly through the environmentally sensitive land near our home. This land currently provides a watershed, wildlife, peace and quiet. We purchased our home 7 years ago due to its proximity to this Corps land and all that it offers. To consider a change to the master plan that includes a road through this property would be a detriment to the quality of life that we now enjoy. It would destroy the environmentally sensitive area that currently exists</p>	<p>Correct, there was no draft proposed at the initial meeting. This is the current proposed draft. Typically, new roads are not permitted on USACE property unless no feasible alternative exists, and those are typically restricted to major arterial roads and highways. Any new roadway on USACE property would need to undergo a thorough environmental review and could include mitigation for impact to natural resources and would also involve public input. There are currently no proposed roads on USACE property under consideration at Grapevine Lake.</p>

Comment	USACE Response
<p>and deserves to be protected in its natural state.  We also own lakefront property near Lincolnton, GA on Lake Thurmond. The Corps manages this lakefront and has done a wonderful job of keeping the lake in a natural state with strictly controlled development. We are confident that, after careful consideration, the Corps will maintain this strict control over any development of this environmentally sensitive area in Trophy Club.</p> <p>Thank you for the opportunity to comment.</p>	
<p>I have lived here for years and I am very concerned with the increasing population and water safety. I have seen the lake go from a family relaxing lake to crowds tying boats together and not following boating safety. I live on Red Bud Point. I have seen over and over again cars parked along the bike lane on the road near the wichita trail and cardinal intersection and going into corps property, I have heard shot gun and rifle shots in the woods by my house on the trailhead many times. I have seen groups from a troublesome STR NRBO on Lakeside in Red Bud subdiyision shooting fireworks on the lake from the woods. There have been groups taking grills into the woods and starting charcoal fires in the woods. There have been numerous bonfires. Yes I have called the non emergency police line about some of these incidents. With the increased population more people have been trying to "find their way" to the lake . This has led to people coming into our yards, actually jumping our fences or literally walking through a closed gate. This could possibly lead to someone being shot. People are parking in the bike lane on wichita trail at twin coves _park and parking all the way on the bridge tearing up the park entrance because they dont want to pay a measly \$5. reconfigure the entrance to block this from happening and stop losing</p>	<p>These topics are outside the scope of the Master Plan. Boaters and personal watercraft operators must comply with Texas state boating laws. Bicyclists and other recreators must comply with rules and regulations at all times. Parking concerns should be brought to the local police and traffic enforcement. For immediate safety concerns please contact the Grapevine Lake office or Fort Worth District office.</p>
<p>The area bordering Snakey Lane, behind Hidden Lake and Silvercrest subdivision should be a wildlife area. It should not be open for recreation outside of using the trails for biking, hiking and walking. There are roosts of egrets and herons, deer, bobcats and coyote. This area should remain undisturbed except for the trails which should be maintained.</p>	<p>The area described along Snaky Lane was already designated for intensive recreation and this Master Plan designates it as HDR to include intensive recreation. Intensive recreational features already located within the park include parking and trailhead, paved trails, pedestrian bridge, park benches, and shade structures. The HDR designation would allow the area to continue being used for trails, picnics, and other day-use activities.</p>

Comment	USACE Response
<p>I wanted to suggest, as a local angler, adding public fishing piers with nighttime lighting, as the pier at McPherson Slough has been either damaged, or dismantled. Adding more easily accessible areas to bank fish at for free on both sides of the lake would increase angling opportunities, and make the lake a better fishing destination overall.</p> <p>As someone with arthritis and has an inverted sleep schedule, finding accessible areas to fish at night safely is something I would like the Corp of Engineers to consider</p>	<p>Due to limited resources, the USACE has no plans for new or improved fishing piers or other amenities. The USACE would welcome the opportunity to work with existing leaseholders, cities, or other stakeholders to provide new or improved access at Grapevine Lake within areas designated as HDR.</p>
<p>In reviewing the Map in the vicinity of Trophy Club Drive where it ends at Kent Street I would like to comment. The area beyond the end of Trophy Club Drive is designated a preserve area and borders on the Trophy Club Golf Course. There has been discussion about the continuation of Trophy Club Drive and a connection made at some point to create a loop. I would like to provide my disapproval for any continuation of or connection of Trophy Club Drive in this area. The traffic would be devastating to the beauty of the area and ruin the quite surrounding of this neighborhood while being a burden to the residents. I will reject any plans to open this road further and ask that it not be considered. We have already used enough of this precious land and it needs to remain a protected area for wildlife to enjoy while preventing the residents in this community undue additional traffic.</p>	<p>Typically, new roads are not permitted on USACE property unless no feasible alternative exists, and those are typically restricted to major arterial roads and highways. Any new roadway on USACE property would need to undergo a thorough environmental review and could include mitigation for impact to natural resources and would also involve public input. There are currently no proposed roads on USACE property under consideration at Grapevine Lake.</p>
<p>Grapevine Lake - Murrell Pakr and Twin Coves is a gem for Floewr Mound. Our family often uses the vast trails system for himing and wildlife viewing. This needs to be preserved. The lake should remain in a public place and not allow commercial development that does not support the basics that the lake outdoor recreation for all, including boating, hiking, camping, bicycling, and wildlife viewing.</p>	<p>Concur. The USACE plans to protect existing natural resources while still providing various public access to recreation opportunities described. Commercial developments will be limited to areas classified as HDR and are typically part of a large facility like a marina or comprehensive development. In such cases, those facilities will be consolidated to reduce the impact to natural resources at Grapevine Lake.</p>



Comment	USACE Response
<p>I support USACE continuing to allow archery hunting on certain portions of land around Grapevine Lake to provide local hunting opportunities, and also to protect the vegetative communities surrounding the Lake. By allowing the harvesting of some individuals from the white-tailed deer population, the USACE will prevent the degradation of plants that deer feed on and will maintain a healthy deer population. Allowing year-round wild pig harvest will also help to protect the native wildlife and vegetative communities and surrounding human neighborhoods.</p>	<p>Noted. The USACE is always evaluating hunting on USCE property but must consider the needs of all users. The amount of land available to hunt is impacted by nearby growing developments, while the intersection of hikers, bikers, and other recreators can cause safety concerns. Please contact the Grapevine Lake office or Fort Worth District office for comments or suggestions on the lake or district hunting policy. Please note that all hunters must also comply with Texas hunting rules and regulations on USACE property.</p>
<p>Please keep the hunting options open to the public as they are currently. I have enjoyed having the opportunity to hunt by way of a draw for the various options that are available. Archery hunting in particular for deer is an excellent way to keep the deer population on the corp property healthy so that the carrying capacity isn't extended as the surrounding area becomes more urbanized.</p>	<p>Noted.</p>
<p>1. Our most important concern is that you not sell any of the Corps property on Lake Grapevine to individuals for development. We do not want to see any more towers or high rise facilities on the lake. We do not want to see any homes or businesses built on Corps property. Existing businesses such as marinas should be improved and brought up to standards, as many marinas need better flotation. Twin Coves marina needs all the Styrofoam taken out and replaced by better flotation material. The old broken Styrofoam is polluting the lake. New marinas should not be added.</p> <p>2. Please take extra care with sensitive environmental areas. We have already seen run off from homes using fertilizers contaminating the lake. We recently watched developers of a 10 acre tract of land that is known as "Sunset at Twin Coves" flatten an area of trees and brush where many, many animals sought refuge. I know you have no control over that, but it was devastating. This development with houses crammed close together abuts Corps property and is very close to the lake. It could cause significant damage to the environment if not watched carefully.</p> <p>Thanks for your time. Please let us know when new ideas for the Master Plan are to be discussed and voted upon. We have lived on Simmons road, very near Murrell Park for 41 years.</p>	<p>1. There are currently no plans to sell any federally owned land at Grapevine Lake. USACE regulations do not allow homes or residential areas on USACE property. Business such as marinas and comprehensive developments will only be permitted in areas classified as HDR. Marinas and all floating facilities must all replace their unencapsulated foam for other types of floatation and have been given guidance on its replacement. Any future proposals for new marinas or expanding additional marinas will be considered in context to the overall usage and capacity at Grapevine Lake.</p> <p>2. Noted.</p>

Comment	USACE Response
We have spent much of our lives enjoying this beautiful lake, and want very much for it to be preserved as much as possible.	
Comments from City Research Partners are provided as figures below.	Responses to these comments are provided after the figures for those comments.
Comments from the City of Southlake are provided as figures below.	Responses to these comments are provided after the figures for those comments.
Comments from the Town of Flower Mound are provided as figures below.	Responses to these comments are provided after the figures for those comments.
Comment from the Town of Northlake are provided as figures below.	Responses to these comments are provided after the figures for those comments.
Comment from Texas Parks and Wildlife Department are provided as figures below.	Responses to these comments are provided after the figures for those comments.

## F.1.1 Comments from Property Research Partners

---

Mr. Matheney,

I hope that this note finds that you are well today and that you, your family, your co-workers at the USACE have stayed safe during the COVID-19 outbreak. My name is Justin Holliday and I am reaching out to you today so as to touch base with your office because I am in the midst of potentially purchasing a piece of property in the Grapevine Lake area that is currently covered by a USACE Flow Easement. To that end and as you know, there are significant restrictions as to how the property can be used, but I wanted to loop-in with you all so as to let you know what our plan would be, while also generally getting your thoughts on the property as it relates to that. First of all, I would point to the attached Surveys, Plats so that you can familiarize yourself with the property and then I would note that within the link below that the tract doesn't have a designation on it, but please my ignorance as to the scope of the map, as it may only have designations on properties that are owned by the USACE. Nonetheless, this 52 AC property is privately owned and is adjacent to federally owned property off of Meadowmere Lane at approximately 32 58'20.62 LAT, 97 07'17.56 LONG. My investment group is in discussions with the current owners and if acquired our goal would be to develop a Luxury RV/Glamping, etc. park on the property. As I understand it, the Corps already has worked with the City of Flour Mound when creating Twin Coves, the City of Grapevine when developing The Vineyards, so our hope was that we could find some similar type of working relationship to get something done here. At the point we have not contacted the City of Grapevine to start a conversation for any type of partnership with them on the actual development, but the current owner has a relationship with them and says that they would be supportive of something like this if it is a well-conceived, executed project.

Having said all of this, I am aware of the stated restrictions on property that is covered by a flow easement and in doing some research on some other projects around the country I have seen some examples of RV parks being allowed without much involvement from the Corp, but our goal would be to work with you to do what is best for the community, so we would prefer to come to you early on so as to seek guidance on this from now to perpetuity. Also, as I understand your office is currently working thru the Master Plan Revision process for the entirety of the Grapevine Lake area and we would love to figure out a way to be a part of your vision for the future of the area. I appreciate any general feedback on this matter and I am more than willing to jump on a call regarding this, but I wanted to start with an email. Also, please know that I understand that there are official processes to matters such as this, but again I just wanted to reach out so as to get a feel for your thoughts, as this would be a large investment for us and our plan for the property is generally focused on this one track so I thought I would touch base with your office now on this.

[https://www.swf.usace.army.mil/Portals/47/docs/Lakes/Grapevine/MasterPlan/Grapevine\\_Land\\_Classification.pdf?ver=2020-05-06-194824-737](https://www.swf.usace.army.mil/Portals/47/docs/Lakes/Grapevine/MasterPlan/Grapevine_Land_Classification.pdf?ver=2020-05-06-194824-737)

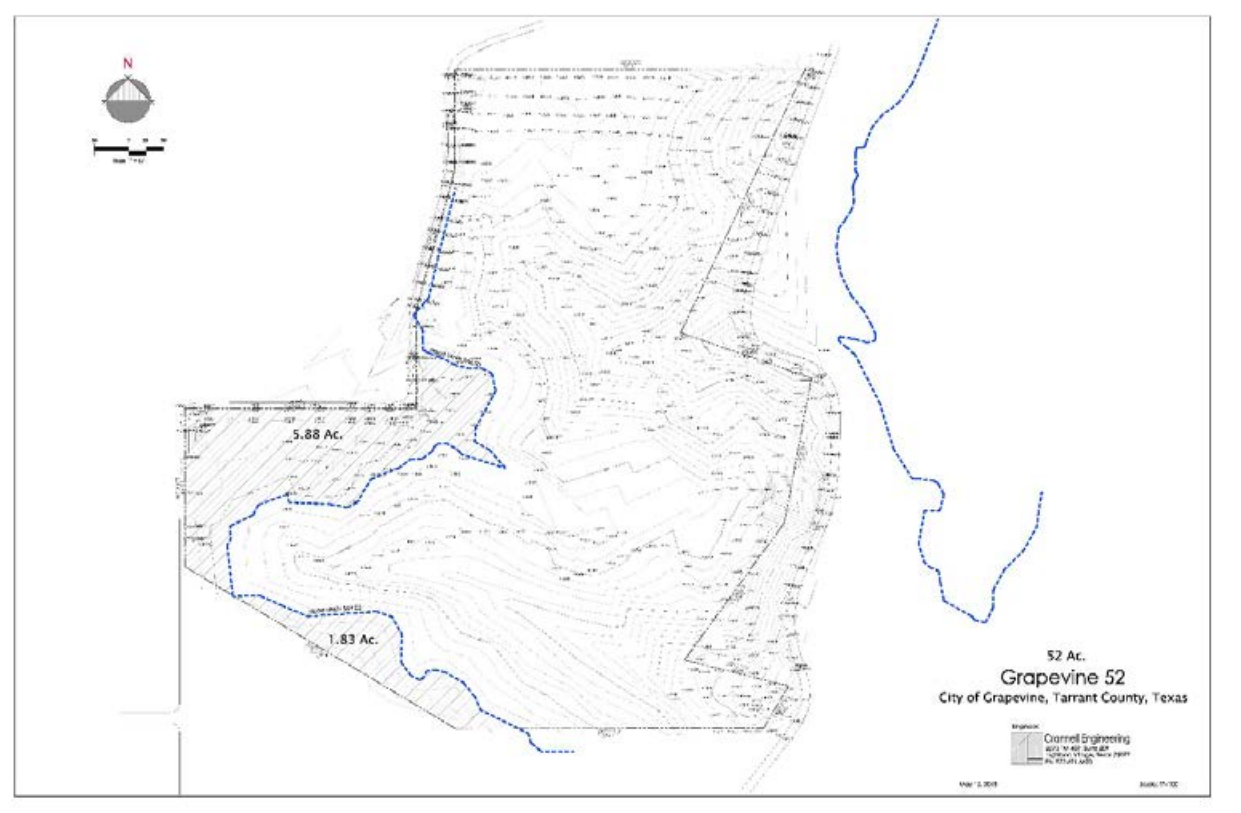
Thank you and have a blessed day.

Justin Holliday, CPL  
CEO, Managing Partner  
Property Research Partners, LLC  
[www.propertyrps.com](http://www.propertyrps.com)

**San Antonio Office**  
18235 Bulverde Road, Suite 105-PMB 307, San Antonio, Texas 78259 (Mailing)  
15943 Bulverde Road, San Antonio, Texas 78247 (Physical)  
(210) 865-0401 (Cell Phone)  
(210) 332-9227(San Antonio Office)

**Denver Office**  
50 South Steele Street, Suite 500  
Denver, Colorado 80209

Figure F.1 Comment from Property Research Partners, LLC (Page 1 of 4)



**Figure F.2 Comment from Property Research Partners, LLC (Page 2 of 4)**

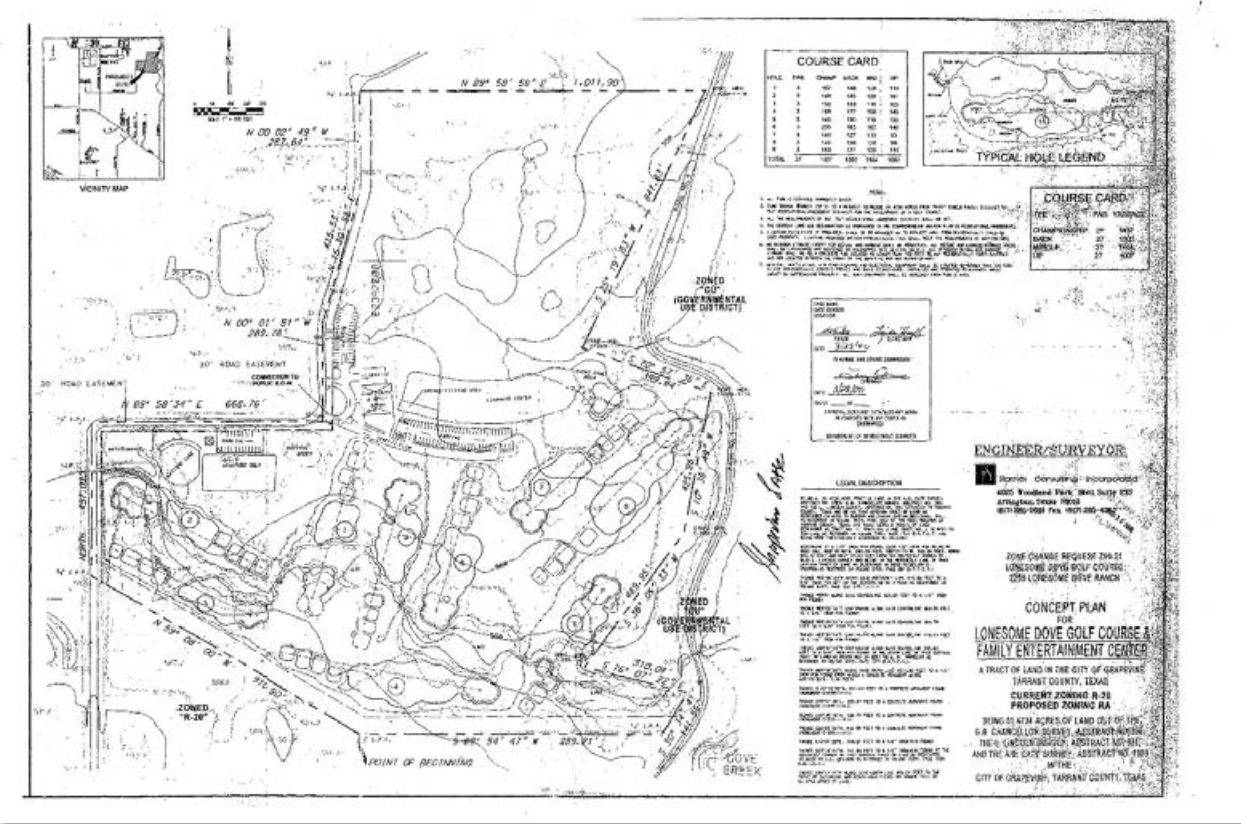
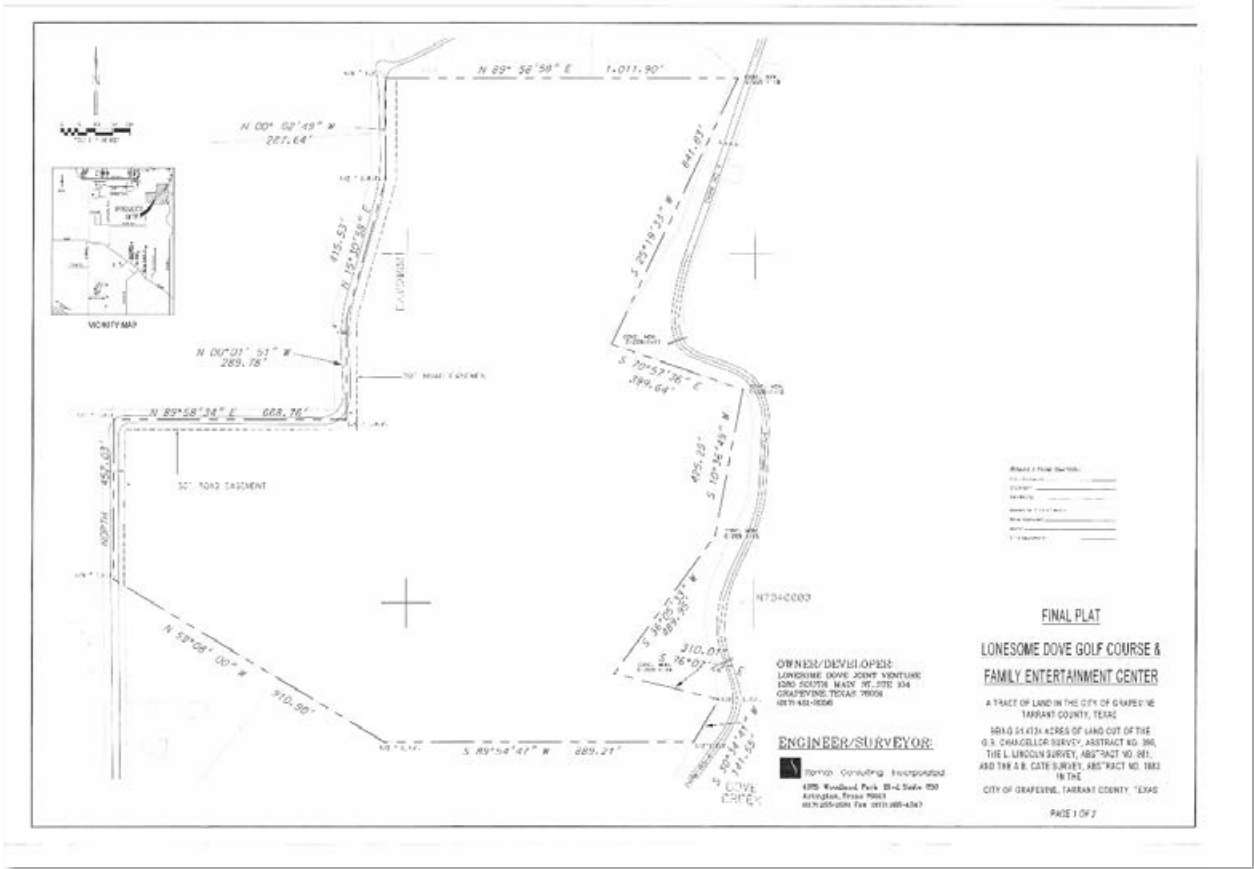


Figure F.3 Comment from Property Research Partners, LLC (Page 3 of 4)



**Figure F.4 Comment from Property Research Partners, LLC (Page 4 of 4)**

Response to Property Research Partners

These comments are outside the scope of the Master Plan. Because flowage easement is not owned by the USACE, it is not included in the Master Plan including land classification, goals, or objectives. For specific questions about the flowage easement guidelines, please contact the Grapevine Lake Project Office.

## F.1.2 Comments from City of Southlake



City Manager's Office

1400 Main Street | Suite 460 | Southlake, Texas 76092 | (p) 817-748-8400 | (f) 817-748-8010

June 20, 2020

Lake Manager  
U.S. Army Corps of Engineers  
110 Fairway Drive, Grapevine, TX 76051

Dear Lake Manager,

Thank you for the opportunity to provide comments on the development of the Grapevine Lake Master Plan. Grapevine Lake and the adjacent Corps of Engineers' property is an outstanding ecological, educational, and passive recreational asset for the City of Southlake which we desire to protect to allow future generations to enjoy. The area provides tremendous benefits to the City including a diverse natural ecosystem ranging from the post oak savannah to the lake edge mud flats, an important wildlife habitat and critical flood storage. The existing walking and equestrian trails on the Corps' property allow residents and visitors an opportunity to experience this unique and outstanding natural resource first hand.

The City of Southlake has a long tradition of land use and open space master planning and has adopted multiple recommendations for the use of the Corps property adjacent to the City of Southlake. Below are applicable recommendations found in various City Master Plan elements.

Southlake 2035 Vision, Goals, and Objectives (Adopted by City Council on June 20, 2017)

Objective 4.13 Pursue recreational and educational opportunities on Corps of Engineers property compatible with the goal of protecting and preserving the existing ecosystem for future generations.

Objective 7.7 Recognize the importance of and protect the biological diversity for the ecological and aesthetic benefits to the community.

Objective 7.8 Define, protect, and celebrate the local Cross Timbers Ecosystem as a community asset for future generations.

Objective 7.9 Assess and minimize the ecological impact of any new trails provided on Corps of Engineers property.

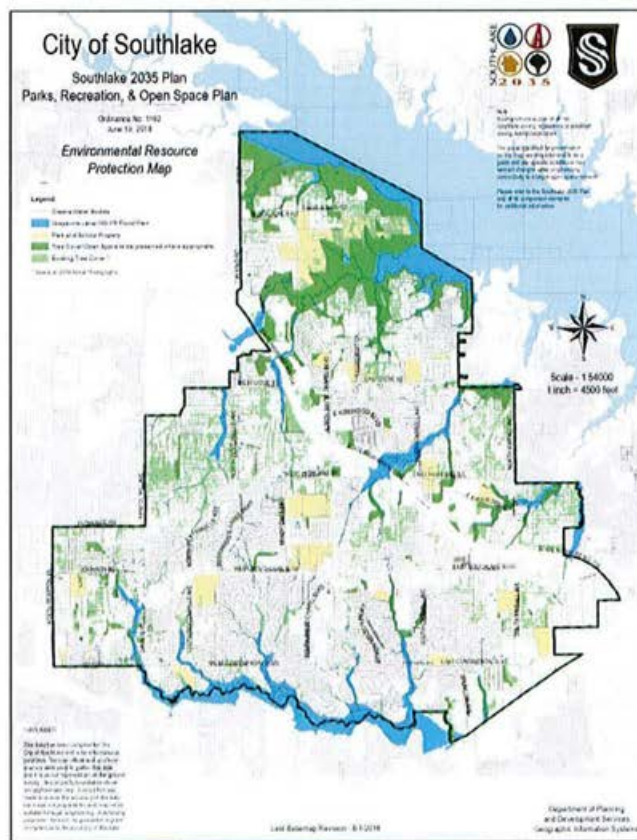
Figure F.5 Comment from City of Southlake (Page 1 of 6)

Parks, Recreation and Open Space Plan (Adopted by City Council on March 19, 2013)

Southlake can also be characterized by its abundant natural resources in the Lake Grapevine vicinity and within walking distance of many neighborhoods. The City has made a very strong commitment to both natural resource protection and preservation of natural open space (p.7).

Southlake 2035 Environmental Resource Protection Map (Adopted by City Council on June 19, 2018)

The City's Environmental Resources Protection Map identifies areas of critical natural resources in the City that should be protected and preserved. This map identifies the Corp of Engineers property and indicates that tree cover and open space in this area be preserved where appropriate.



**Figure F.6 Comment from City of Southlake (Page 2 of 6)**



The current "High Density Recreation" Land Use classification placed on the Corps' land areas adjacent to the City of Southlake is inconsistent with the City's Master Plan recommendations for the use of the property as it allows intensive recreational activities, day use areas, commercial concessions and quasi-public development.

Based on the City's adopted Master Plan recommendations it is our request that the Army Corps of Engineering property adjacent to the City remain in a state similar to its current use which includes no intensive use or development of the area but does permit hiking and equestrian trails, with corresponding safety or educational trail signage. The City would also request that it retain the ability to improve and maintain any City-owned roadways or bridge structures (with proper permitting) that cross Army Corps of Engineers property.

The City of Southlake formally requests that a less intense land use classification more consistent with the existing use of the property and the City's goals of maintaining this area as an ecological resource be applied.

In terms of the water surface classification adjacent to Southlake properties, the City requests a classification that allows the public to access the water surface via Southlake exclusively through hiking or horseback. The City is opposed to water surface access via any motorized vehicles. Also, the City is opposed to a public marina or other commercial activity on or near the water surface adjacent to Southlake properties.

Thank you for allowing the City of Southlake the opportunity to comment on the proposed Grapevine Lake Master Plan. If you have any questions, please feel free to contact Ken Baker, Senior Director of Planning and Development at [kbaker@ci.southlake.tx.us](mailto:kbaker@ci.southlake.tx.us) or (817) 748-8067.

Sincerely,



Shana K. Yelverton  
City Manager

Attachments: (1) City of Southlake Comprehensive Plan References  
(2) Lake Grapevine Existing Land Use Classifications Map

**Figure F.7 Comment from City of Southlake (Page 3 of 6)**

**Attachment - #1 City of Southlake Comprehensive Plan References (See Objectives 4:13, 7.7, 7.7 and 7.9)**

**SOUTHLAKE 2035 VISION STATEMENT**

Southlake will continue to enhance its status as a desirable, attractive, safe, healthy and fiscally-sound community with quality neighborhoods, while maintaining a high standard of living, learning, shopping, working, recreation, and open spaces. Southlake will continue to be a vibrant community that epitomizes both economic and environmental sustainability.

**SOUTHLAKE 2035 GOALS & OBJECTIVES**

**Goal 4: Parks, Recreation and Open Space**

Support a comprehensive integrated parks, recreation and open space system for all ages that creates value and preserves natural assets of the City.

Objective 4.1 Ensure that new development incorporates usable open space.

Objective 4.2 Ensure that parkland and open spaces include an integrated mix of developed and natural areas with consideration of protecting the City's ecosystem and wildlife corridors.

Objective 4.3 Promote water conservation and reuse in the design of parks and open spaces.

Objective 4.4 Utilize partnerships to create open space and recreation facilities.

Objective 4.5 Ensure an even geographic distribution of park facilities and recreation activities—both active and passive—for citizens of all ages.

Objective 4.6 Provide a full range of park facilities and linear linkages that will accommodate the current and future needs of the City's residents and visitors.

Objective 4.7 Integrate passive recreational opportunities into preserved natural and drainage areas.

**Figure F.8 Comment from City of Southlake (Page 4 of 6)**

Objective 4.8 Incorporate feedback received from the Parks and Recreation Citizen Survey into recreation activities and park facilities.

Objective 4.9 Acknowledge the City's rich natural history, heritage and historical landmarks.

Objective 4.10 Determine parkland desirable for dedication as part of the development process based on classification, location and maintenance cost.

Objective 4.11 Prioritize investments in existing and established parks understanding that there will be strategic opportunities for land acquisition.

Objective 4.12 Incorporate educational and learning opportunities within parks and related facilities.

Objective 4.13 Pursue recreational and educational opportunities on Corps of Engineers property compatible with the goal of protecting and preserving the existing ecosystem for future generations.

#### Goal 7: Sustainability

Encourage the conservation, protection, enhancement and proper management of the natural and built environment.

Objective 7.1 Maintain and implement policies to reduce the use of nonrenewable resources, such as energy in the heating, cooling, and operation and maintenance of city facilities.

Objective 7.2 Promote public awareness and education on such sustainability issues as public health, energy and water conservation and overall environmental stewardship.

Objective 7.3 Promote sustainable public and private development practices and patterns, building design, water-use reduction and waste reduction while maintaining the existing character of the city.

Objective 7.4 Protect surface, storm, and groundwater quality from septic discharge, impervious surface runoff, improper waste disposal and other potential contaminant sources.

Objective 7.5 Conserve, restore and promote tree and plant cover that is native or adaptive to the City and region while also protecting existing significant vegetation and maintaining the existing character of the City.

**Figure F7.9 Comment from City of Southlake (Page 5 of 6)**

Objective 7.6 Protect and enhance air quality in coordination with federal, regional and local agencies.

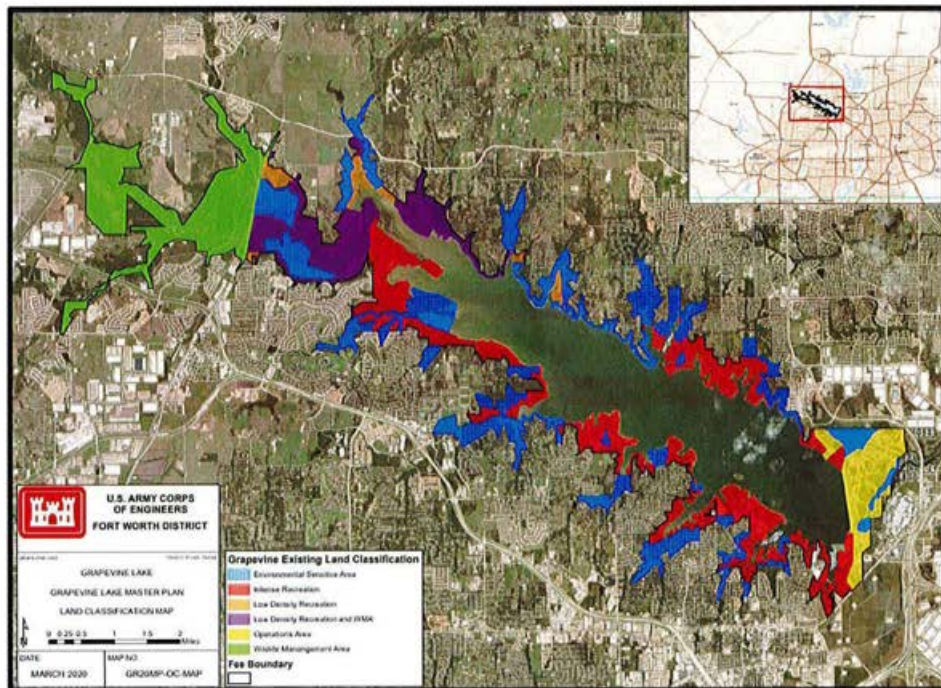
Objective 7.7 Recognize the importance of and protect the biological diversity for the ecological and aesthetic benefits to the community.

Objective 7.8 Define, protect, and celebrate the local Cross Timbers Ecosystem as a community asset for future generations.

Objective 7.9 Assess and minimize the ecological impact of any new trails provided on Corps of Engineers property.

### **Attachment 2 – Lake Grapevine land Classification Map**

The City of Southlake is opposed to the "Intense Recreation" land use designation for Corp Property lands adjacent to the City of Southlake.



**Figure F.10 Comment from City of Southlake (Page 6 of 6)**

### Response to City of Southlake

The USACE concurs with the City's objectives to provide unique recreational and educational opportunities while protecting the natural resources at Grapevine Lake including the highlighted objectives 4.13, 7.7, 7.8, and 7.9 and are consistent with the goals and objectives of this Master Plan.

The revised Master Plan proposes to change some areas adjacent to the City of Southlake to ESA and WM while consolidating intensive recreation to areas that already have developed parks and other intensive recreation. The USACE defines some features such as trailheads, parking lots, shade structures, and hard surface/paved trails as intensive recreation and have been designated as HDR to allow similar features in the future. Although the HDR classification could allow other types of features and amenities described in 4.2.3 and 5.3, the USACE has no plans for additional intensive recreation features in these areas. The USACE welcomes the opportunity to partner with the City of Southlake or other stakeholders to improve or maintain existing trails and access points or to provide amenities needed by local users. The City of Southlake is invited to offer additional comments on the proposed land classification changes during the draft comment period.

## F.1.3 Comments from the Town of Flower Mound



June 26, 2020

U.S. Army Corps of Engineers  
Attn: Grapevine Lake Manager  
110 Fairway Drive  
Grapevine, TX 76151

To Whom It May Concern:

The Town of Flower Mound appreciates the opportunity to provide comment on the Grapevine Lake Master Plan Revision. Information about the master plan revision and the comment period was promoted to our residents via the Town's different social media channels, website, and through our department's monthly e-bulletin.

Below you will find comments and recommendations for the different areas located within the Town of Flower Mound and comments related to Rockledge Park in Grapevine. These comments are based off feedback we have received over the years from residents as well as staff recommendations. As evident in our 2017 Parks and Trails Master Plan, trails continue to rank #1 as the most important service or facility to receive attention over the next five years. You will find that in most areas the Town recommends continued improvements, expansion, and connectivity of the equestrian and hike/bike trails within COE property and to Town of Flower Mound trails.

- North Shore Park/Knob Hill Park located off 377
  - Recommendations:
    - Operations and Maintenance stay under the authority of the USCOE.
    - Address the ongoing problem related to litter by adding additional trash receptacles and/or an 8 yard dumpster.
    - Make improvements to the parking area.
    - Add additional amenities to the trailhead, such as shade, benches, bike repair station, and trash receptacle.
    - Continue to utilize Dallas Off-Road Bicycle Association (DORBA) to maintain the trailhead and trails.
    - Continue to allow organizations to host races.
- Knob Hill Park/Cross Timbers Equestrian Trailhead
  - Recommendations:
    - Town of Flower Mound would like to continue to lease, operate, and maintain the Cross Timbers Equestrian Trailhead.
    - If adjacent properties were acquired by the Town for park purposes, the Town would be prepared to explore lease opportunities with the USCOE to expand acreage and provide additional lake front amenities for our residents.

2121 Cross Timbers Road • Flower Mound, Texas 75028 • Office: 972/874-6000 • Fax: 972/874-6460 • TDD: 1-800-RELAY-TX

Figure F.11 Comment from Town of Flower Mound (Page 1 of 3)

- USCOE should continue to work with DORBA and Cross Timbers Equestrian Trails Association (CTETA) to maintain and expand the trails.
  - Look for ways to connect USCOE trails with Town trails where possible.
- Rocky Point Park
  - Recommendations:
    - Operations and Maintenance should stay under the authority of the USCOE.
    - Find ways to connect trails within the USCOE property as there are several gaps on the north side of the lake.
    - Continue to work with DORBA and CTETA to maintain and expand the trails.
    - Look for ways to connect USCOE trails with Town trails where possible.
    - Provide off-street parking and access into the COE property.
- Twin Coves Park
  - Recommendations:
    - Town of Flower Mound to complete the approved Twin Coves Park Master Plan when funding becomes available.
    - Town of Flower Mound would like to explore the addition of revenue producing amenities (i.e. – floating water parks, giant slides, etc.)
    - Town of Flower Mound to complete the approved plans for a floating Fire Department Boat House.
    - Reevaluate the environmentally sensitive area (TC2) to allow for additional low density recreation in areas toward the south end of the ESA.
    - Permit Town of Flower Mound to add the following uses when and if funding becomes available:
      - swimming/beach area.
      - fishing pier.
      - Courtesy boat dock for overnight guest use only.
- Murrell Park
  - Recommendations:
    - Town of Flower Mound is interested in exploring ways to provide recreational activities at this park.
    - Town of Flower Mound would be open to exploring the possibility of leasing the property for additional recreational activities as well as overnight camping. This would not include the marina.
    - Improve boat ramp areas.
    - Enhance day use area.
    - Add RV area and additional primitive camping.
    - Master Plan park if Town of Flower Mound can lease the park.
    - Develop park based on approved master plan as funding becomes available and Town is able to lease park.

**Figure F.12 Comment from Town of Flower Mound (Page 2 of 3)**

- Rockledge Park
  - Recommendations:
    - Explore leasing opportunity with USCOE if the City of Grapevine does not renew their lease and if a municipal boundary change could occur putting the park inside the Town of Flower Mound city limits.
    - Master Plan park if Town of Flower Mound takes over lease.
    - Develop park based on approved master plan as funding becomes available.

Lastly, the Town recommends that the USCOE look at rebranding the lake parks and trail systems, update the USCOE Grapevine Lake's main webpage, create a social media platform to help promote and inform the public, and provide interpretative signage to help educate the public on the ecosystems found around the lake and the different types of animals and plants in those areas.

Thank you for taking the time to review the abovementioned comments and recommendations for the US Corp of Engineers parks within the Flower Mound town limits. Please do not hesitate to call or email me at [chuck.jennings@flower-mound.com](mailto:chuck.jennings@flower-mound.com) or 972-874-6273 to discuss these comments further.

Sincerely,



---

Chuck Jennings, CPRP  
Director of Parks and Recreation Services  
Town of Flower Mound

**Figure F.13 Comment from Town of Flower Mound (Page 3 of 3)**



## Response to Town of Flower Mound

North Shore Park/Knob Hill Park located off 377: These are not topics covered in the Master Plan. Some areas will remain classified as HDR in order to continue to allow intensive recreation including trailhead, shade structures, benches, bike repair stations, etc. Other areas have been classified as ESA and WM in order to protect the natural resources in that area. Soft surface/unpaved trails are permitted within areas classified as ESA and WM, but not intensive recreation or features with significant impacts. The Town of Flower Mound is welcome to offer additional comments on the proposed land classification changes during the draft comment period.

Knob Hill Park/Cross Timbers Equestrian Trailhead: The USACE welcomes the ongoing partnership with the Town of Flower Mound and future endeavors to provide additional recreation opportunities while protecting natural resources at Grapevine Lake. The Town of Flower Mound is encouraged to review the proposed land classification changes as well as the proposed goals and objectives in Chapter 3 to ensure future proposals are consistent with the proposed changes to the Master Plan. Please contact the Grapevine Lake Project office or Fort Worth District office for more information about future lease opportunities at Grapevine Lake.

Rocky Point Park (Trail): The USACE intends to continue Operations and Maintenance at these areas and work with DORBA, CTETA, and other stakeholders to provide additional improvements and maintenance. The USACE works with limited resources, but welcomes the opportunity to connect to Town trails, but in some cases may not have resources to make such connections. Vehicles should park in designated locations and refrain from parking off roads or other non-designated locations in order to protect the natural resources at Grapevine Lake.

Twin Coves Park: Some areas of Twin Coves Park have been classified as ESA in order to protect sensitive natural resources, while other areas are HDR to allow ongoing and future intensive recreation. New facilities including comprehensive developments should feature the natural resources at Grapevine Lake and be consistent with the Goals and Objectives in Chapter 3 of the Master Plan. For specific proposals and lease opportunities, the Town of Flower Mound should contact the Grapevine Lake Project office or Fort Worth District office. The Town of Flower Mound is invited to provide comments on the proposed land classification and other changes to the proposed Master Plan.

Murrell Park: Murrell Park has been classified as HDR to allow intensive recreation activities and facilities. The USACE welcomes the opportunity to partner with the Town of Flower Mound and other stakeholders to lease recreation areas and make other improvements that are consistent with USACE regulations, and the Goals and Objectives listed in Chapter 3 of the Master Plan. For specific proposals and lease opportunities, the Town of Flower Mound should contact the Grapevine Lake Project office or Fort Worth District office.

Rockledge Park: Rockledge Park has been classified as HDR to allow intensive recreation activities and facilities. Park leases and specific park plans are outside the scope of the Master Plan. For comments or questions, please contact the Grapevine Lake Project office or Fort Worth District office.

Due to limited resources, rebranding USACE webpage and social media platform is not feasible. Other signage including interpretive signage could be added as resources become available. Furthermore, the Town of Flower Mound can contact the Grapevine Lake Project office or Fort Worth District office to provide a link to the Town of Flower Mound on the USACE website to provide information about specific parks and activities. In addition, the Town can contact the Fort Worth District Public Affairs Office to share events or activities located on USACE property which could be shared on USACE social media pages.

## F.1.4 Comments from the Town of Northlake

---

On behalf of the Town of Northlake, I want to make sure the master plan reflects the plans of the Town of Northlake. I have attached copies of a few plans of the Town that could impact the Grapevine Lake planning area in the Denton Creek corridor west of the Lake and 377 where it is currently designated as a Wildlife Management Area. The Town's goal would be to preserve this area as much as possible while allowing for some limited passive recreational use, primarily trails as identified in the attached future trail plan. Please contact me if you have any questions or need any additional information.

Thank you,



**NATHAN REDDIN**  
Development Director

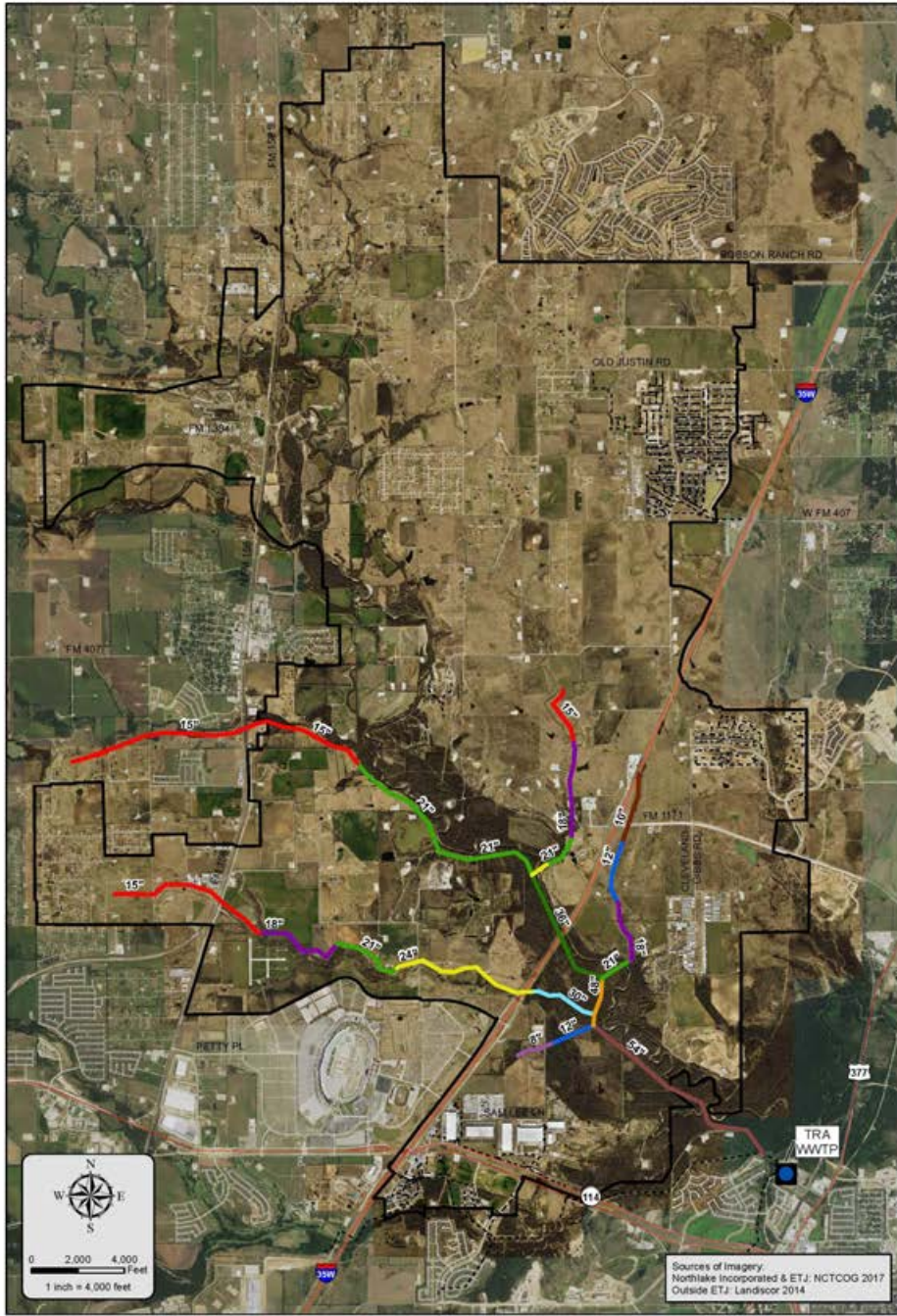
Town of Northlake, Texas  
1500 Commons Circle, Suite 300  
Northlake, TX 76226

**O:** (940) 242-5703

[www.town.northlake.tx.us](http://www.town.northlake.tx.us)



**Figure F.14 Comment from Town of Northlake (Page 1 of 4)**





Sanitary Sewer Master Plan

**Legend**

- Proposed Line
- Existing Line
- Northlake Incorporated Area and ETJ



**Figure F.15 Comment from Town of Northlake (Page 2 of 4)**

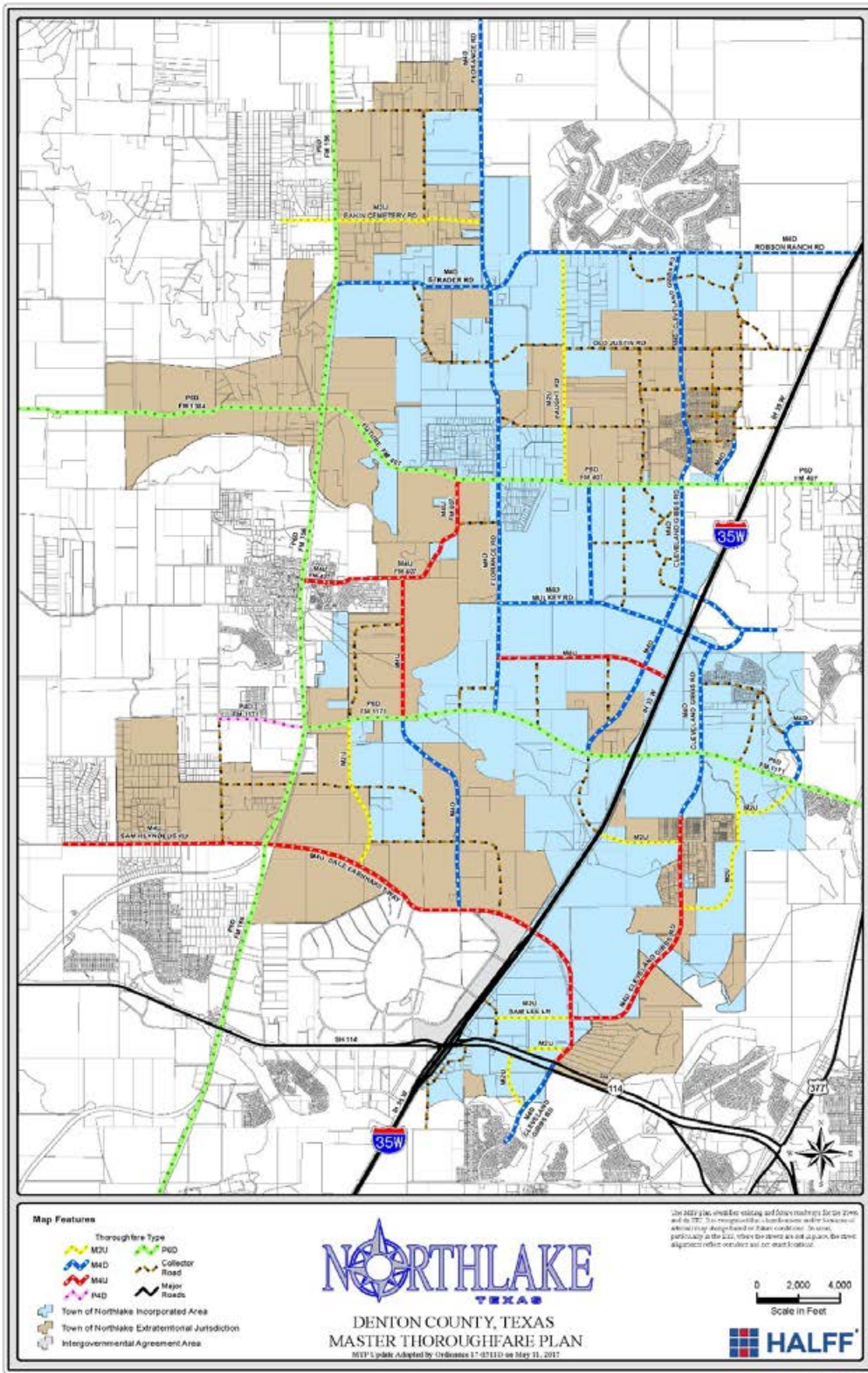
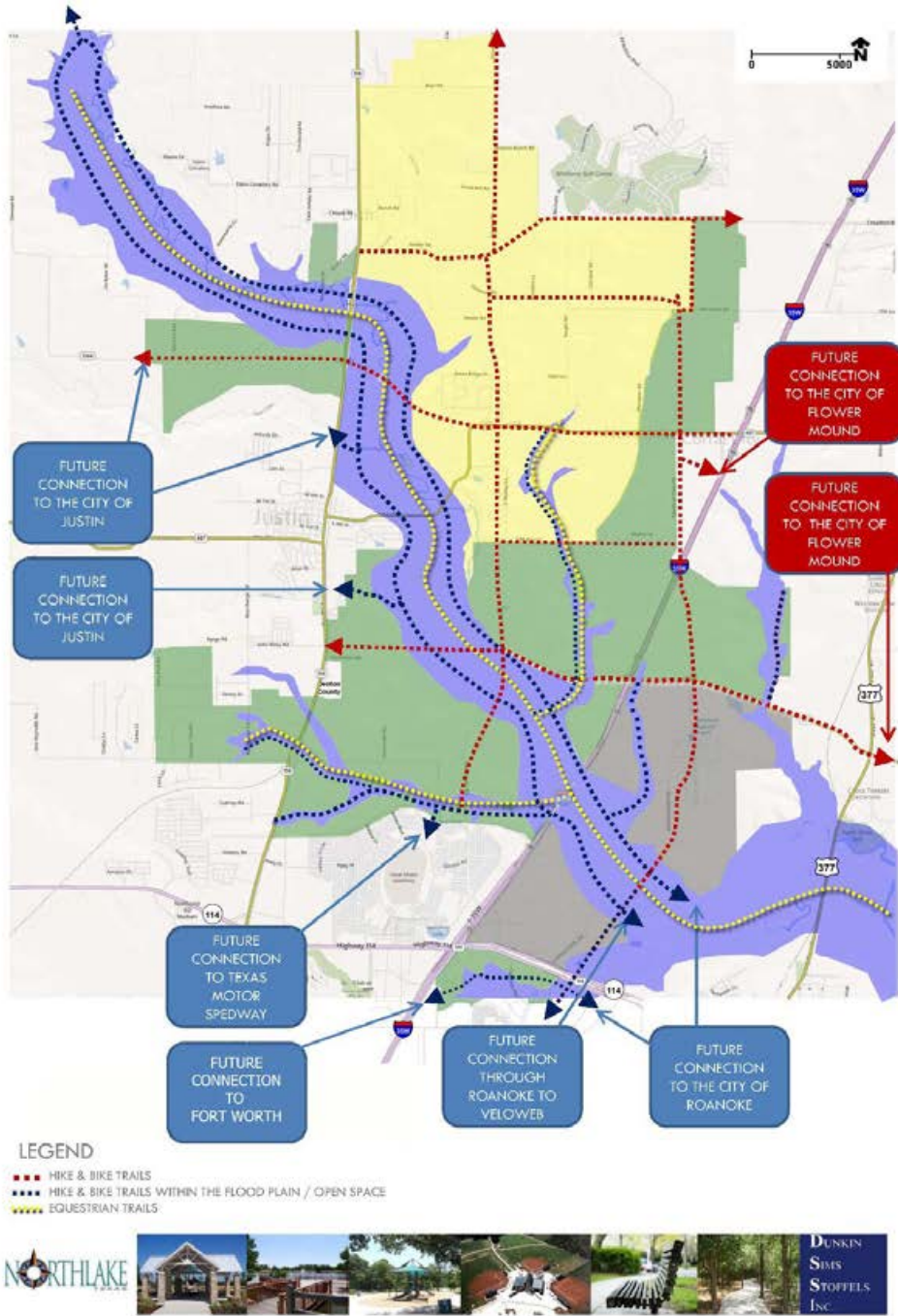


Figure F.16 Comment from Town of Northlake (Page 3 of 4)

**TOWN OF NORTHLAKE PARK SYSTEM**  
TOWN OF NORTHLAKE, TEXAS

**TRAIL PLAN**  
REVISED APRIL 24, 2014



**Figure F.17 Comment from Town of Northlake (Page 4 of 4)**

### Response to Town of Northlake

Most areas near the Town of Northlake have been classified as ESA, WM, or LDR in order to protect sensitive natural resources in the area. A small area at the Cross Timbers Trailhead has been classified as HDR to include existing and future facilities that might be needed at the trailhead. ESA, WM, and LDR classification will allow soft surface/unpaved trails, but ESA is more restrictive, and sensitive natural resources must be considered and protected before adding new trails.

Sanitary Sewer Master Plan Map: Any new utilities must consider other feasible alternatives before crossing USACE land. When no feasible alternative exists, the new utilities should be restricted to utility corridors. The Town of Northlake should review the Utility Corridor map to determine if proposed utility corridors are compatible with new or expanded utilities.

Master Thoroughfare Master Plan Map: Generally, new roads will not be permitted to cross USACE property unless no feasible alternative exists, and in those cases is restricted to major arterial roads and highways. The Town of Northlake should review the proposed utility corridor maps in Appendix A to determine if proposed utility corridors along thoroughfares are adequate and offer comments during the comment period.

Future Trail Plan Map: The Town of Flower Mound should review the land classification maps in Appendix A to determine if the proposed land classification will permit the Town's future trail needs. Take special consideration into areas where trailheads, restrooms, parking, hard surface/paved trails, or other facilities might require an HDR classification for intensive recreation and offer comments during the comment period.

## F.1.5 Comments from Texas Parks and Wildlife Department



June 24, 2020

Mr. Paul Roberts c/o Lake Manager  
U.S. Army Corps of Engineers  
110 Fairway Drive  
Grapevine, Texas 76051

Re: Scoping for Grapevine Lake Master Plan Revision  
Denton and Tarrant Counties, Texas

Dear Mr. Paul Roberts:

Texas Parks and Wildlife Department (TPWD) received the May 7, 2020, public notice of the initiation process to revise the Grapevine Lake Master Plan (Master Plan). Information regarding the project and the previous Master Plan documents were made available on-line, and the public has been given opportunity to provide scoping comments for the Master Plan.

### *Project Description*

The U.S. Army Corps of Engineers Fort Worth District (USACE) proposes to revise the Master Plan, which is the strategic land use management document that guides the comprehensive management and development of all recreational, natural, and cultural resources throughout the life of the Grapevine Lake water resource development project. The revised Master Plan will guide the responsible stewardship of USACE-administered lands and resources for the benefit of present and future generations.

The current Master Plan was completed in 1971 with a supplement published in 2001 and will be revised to address changes in regional land use, population, outdoor recreation trends, and USACE management policy. Key topics to be addressed in the revised Master Plan include revised land classifications, revised natural, cultural, and recreational resource management objectives, recreation facility needs, and special topics such as invasive species management and threatened and endangered species habitat.

### **TPWD's Role and Review**

As the state agency with primary responsibility for protecting the state's fish and wildlife resources and in accordance with the authority granted by Parks and Wildlife Code §12.0011, TPWD has a role in reviewing the environmental impacts of federal actions in Texas in association with the National Environmental Policy Act of 1969 (NEPA). TPWD staff from our Inland Fisheries Division and Wildlife Division are interested in the proposed revision and will work with USACE throughout the revision process to assist in identifying sensitive resources and their management needs, potential fisheries protection areas, water recreation needs and access, habitat management goals, needs for trails and park improvements, terrestrial and aquatic

Life's better outside.®

Commissioners

S. Reed Morian  
Chairman  
Houston

Arch "Beaver" Applin, III  
Vice-Chairman  
Lake Jackson

James E. Abell  
Kilgore

Oliver J. Bell  
Cleveland

Anna B. Galo  
Laredo

Jeffery D. Hildebrand  
Houston

Jeanne W. Latimer  
San Antonio

Robert L. "Bobby" Patton, Jr.  
Fort Worth

Dick Scott  
Wimberley

Lee M. Bass  
Chairman-Emeritus  
Fort Worth

T. Dan Friedkin  
Chairman-Emeritus  
Houston

Carter P. Smith  
Executive Director

4200 SMITH SCHOOL ROAD  
AUSTIN, TEXAS 78744-3291  
512.389.4800

[www.tpwd.texas.gov](http://www.tpwd.texas.gov)

To manage and conserve the natural and cultural resources of Texas and to provide hunting, fishing and outdoor recreation opportunities for the use and enjoyment of present and future generations.

Figure F.18 Comment from Texas Parks and Wildlife Department (Page 1 of 4)



Mr. Paul Roberts  
Page 2  
June 24, 2020

invasive species management goals, and needs for public education such as water safety and invasive species.

TPWD's Wildlife Division – Wildlife Habitat Assessment Program (WHAB), in coordination with TPWD's Inland Fisheries Division, offers the following for consideration in the Master Plan to minimize potential impacts to natural resources within the Project area and to guide conservation-minded recreational development.

*Sensitive Resources*

The project area is primarily within the Cross Timbers ecoregion. The Texas Conservation Action Plan (TCAP) provides guidance toward addressing Species of Greatest Conservation Need (SGCN) and important habitats and includes a statewide handbook as well as handbooks for each ecoregion of the state. To help guide your planning efforts, information on the TCAP, handbooks, and lists of SGCN can be found on TPWD's website. The TCAP identifies priority habitats as well as priority issues related to farm, ranch, and municipal land and water management issues, conservation and recreation land and water management issues, and non-native invasive species and problematic native invasive species that can impact priority species and habitats.

In addition to the TCAP lists of SGCN by ecoregion, the TPWD online application identifying rare, threatened, and endangered species by county (RTEST) provides information regarding state-listed species and SGCN with potential to occur within each county in Texas. Please note that RTEST has undergone a significant update to reflect changes to the state-listed threatened and endangered species lists, effective March 30, 2020. A complete list of the species that were removed from and added to the state threatened and endangered species lists are available in the March 27, 2020 issue of the *Texas Register* (45 TexReg 2188).

TPWD maintains the Texas Natural Diversity Database (TXNDD) which tracks known occurrences of SGCN and rare habitats. These data are available upon request through the TXNDD. Given the small proportion of public versus private land in Texas, the TXNDD does not include a representative inventory of rare resources in the state, and absence of information in the database does not imply that a species is absent from that area. The TXNDD contains records of native prairie communities and the state-listed threatened Texas heelsplitter (*Potamilus amphichaemus*) at Grapevine Lake. Lands at Grapevine Lake may contain other state-listed species or SGCN that have not been found or reported to the TXNDD.

The Ecological Mapping Systems of Texas is a land classification project which provides systems, mapping subsystems, and vegetative types for Texas and may assist in the USACE efforts toward examining project lands. EMST data are available by download or through the Texas Ecosystem Analytical Mapper, an online interactive mapping tool.

The iNaturalist citizen science application may provide data on plants and wildlife observed at Grapevine Lake to help guide appropriate land use classifications.

**Figure F.19 Comment from Texas Parks and Wildlife Department (Page 2 of 4)**

Mr. Paul Roberts  
Page 3  
June 24, 2020

**Recommendation:** TPWD recommends referring to the TCAP, RTEST, TXNDD, EMST, and iNaturalist for information regarding sensitive resources potentially occurring in the area, priority habitats, and issues affecting sensitive resources within the Cross Timbers ecoregion.

**Recommendation:** In addition to addressing sensitive resources, TPWD recommends the Master Plan include natural resource inventories and monitoring goals to identify habitat changes that may occur over the life of the project and trigger adaptive management, when needed.

**Recommendation:** TPWD recommends Environmentally Sensitive Area (ESA) classification for native prairies, stream and riparian corridors, scenic areas, barrens, savannas and open woodlands, oak forest and mature juniper woodlands, springs and seeps, crevices and karst openings, wetlands, and bottomland forests. TPWD also supports addressing invasive species, restoring degraded prairies, addressing encroachments or trespass, and improving recreational infrastructure and opportunity as appropriate to the meet public demand without exceeding carrying capacity of the property and its resources while balancing the stewardship of the natural resources.

**Comment:** TPWD is available to review and provide input regarding USACE's preliminary land use and water surface classifications as they are being developed.

#### *Floral Resources*

Significant declines in the population of migrating monarch butterflies (*Danaus plexippus*) have led to widespread concern about this species and other native insect pollinator species due to reductions in native floral resources. To support pollinators and migrating monarchs, TPWD encourages the establishment of native wildflower habitats on private and public lands across the state. Please refer to publications that found on TPWD's Native Pollinator website and TPWD's Monarch Butterfly website.

**Recommendation:** TPWD recommends incorporating pollinator conservation into the Master Plan to promote and sustain the availability of floral resources throughout the growing season. TPWD encourages conservation of quality native grasslands and restoration of degraded grasslands to provide diverse floral resources for pollinators and habitat for grassland SGCN plants and wildlife.

#### *Boat Ramps*

The 2019 Fisheries Survey Report for Grapevine Lake will be available online or by direct request from TPWD after July 31, 2020, [https://tpwd.texas.gov/publications/pwdpubs/lake\\_survey/](https://tpwd.texas.gov/publications/pwdpubs/lake_survey/). USACE may use the report to review the public angler access locations and boat ramp characteristics including the elevation at the end of the boat ramps and ramp conditions. The terminus elevation approximates available boater access to the reservoir during periods of low

**Figure F.20 Comment from Texas Parks and Wildlife Department (Page 3 of 4)**

Mr. Paul Roberts  
Page 4  
June 24, 2020

water level. The boat ramp measurements could be used to describe the level of impact to recreation and the local economy during drought conditions and used to guide future boat ramp improvements or construction to mitigate against or prevent reduced access to the reservoir.

**Recommendation:** TPWD recommends reviewing the 2019 Fisheries Survey Report to aid in the Master Plan's assessment of recreational needs, identification of resource objectives, and to guide decisions regarding future improvements or construction of boat ramps.

**Recommendation:** TPWD recommends the plan identify if there is a need for additional boat ramps or if the lake already meets a maximum safe boating-use capacity.

Because I will be compiling the agency letter upon TPWD review of the draft Master Plan, please continue to include me in all correspondence with other TPWD staff regarding this project. Once the Master Plan and Environmental Assessment are drafted for public review, please coordinate with the TPWD Wildlife Division WHAB program through my email as well as our project review repository at WHAB@tpwd.texas.gov.

The TPWD Inland Fisheries Division contact for this project is Rafe Brock, District Fisheries Biologist, at Raphael.Brock@tpwd.texas.gov. If you have any questions, please contact me at (903) 322-5001 or Karen.Hardin@tpwd.texas.gov.

Sincerely,



Karen B. Hardin  
Wildlife Habitat Assessment Program  
Wildlife Division

kbh/43370

**Figure F.21 Comment from Texas Parks and Wildlife Department (Page 4 of 4)**

## Response to Texas Parks and Wildlife Department

The USACE concurs with the description of the Grapevine Lake Master Plan and TPWD's role as described.

The Master Plan considered the Sensitive Resources discussed and referenced the TCAP, SGCN, TXNDD, and EMST when developing the new land classification maps in Appendix A as well as the Goals and Objectives in Chapter 3. Team members also reviewed iNaturalist observations to help provide additional context and guide land classification decisions.

Recommendation 1: Concur.

Recommendation 2: Concur.

Recommendation 3: Concur, all have been addressed in the Master Plan, but some application and related activities are outside the scope of the Master Plan.

Comment 4: Noted

Floral Resources: Concur. Significant monarch butterfly and other pollinator habitat has been included in ESA, WM, and LDR areas to reduce impacts by recreation and other activities.

Recommendation 5: Concur.

Boat Ramps: Noted, although such impacts are outside the scope of the Master Plan but are useful for Grapevine Lakes OMP.

Recommendation 6: Noted.

Recommendation 7: The USACE has conducted a boating capacity study that was severely impacted by the COVID-19 pandemic. When additional funds become available, an additional study may be conducted to determine demand and capacity.

The USACE welcomes review by TPWD of the proposed Master Plan and providing additional comments within the comment period.

## F.2 COMMENTS FROM PUBLIC AND AGENCY REVIEW OF DRAFT MP, EA, AND FONSI AND USACE RESPONSE

**Table F.2 Public Comments from June 9, 2022 Public Workshop**

Comment	USACE Response
<p>Being one of the few people who use Fairway Dr. in a car and on a bicycle, I do not want it closed to either type of vehicle. When cycling between Grapevine and Flower Mound, the dam is the most scenic and safer than alternate routes. I think a 30 mph speed limit (as it was in years past) and signage that informs motorist that bicycles have the right to use the roadway would work well and be financially insignificant. I understand that Fairway Dr. is a critical thoroughfare but please, balance that with the recreational and esthetic needs of the community. This suggestion provides minimal impact on traffic flow and enhances safety for everyone.</p>	<p>The primary purpose for the road across the dam is Project Operations and is subject to close as necessary for maintenance, safety, or security. While traffic is generally permitted, Fairway Drive is managed by the City of Grapevine, including speed limits, bicycle and pedestrian access, signage, and traffic management. For changes to Fairway Drive, please contact the City of Grapevine.</p>
<p>In reviewing the meeting notes from June 9th, it states that the ESA areas are proposed to roughly double in size. Can you please detail where these areas are specifically? Or was this due to the reclassification of ESA from the previous master plan?</p>	<p>The majority of the lands changed from WMA to ESA are located on the West end of the lake in the vicinity of Cleveland Gibbs Road. Maps are provided in the new draft/final classifications included in Appendix A of the Final Master Plan.</p>
<p>Northshore Trail-Flower Mound: In working with the ACOE's two previous GVL Managers directly to help build the trail from it's previous 'out-and-back' format to a safer, longer, easier to navigate stacked loop, multi-use trail system, I continue to work to keep the trail in good shape for all by being a member of both the DORBA volunteer organization and a more local community of trail users who volunteer to maintain by weed whacking, removing deadfall, trimming, lopping, signage replacement, damage repairs, and re-routes due to new development erosion issues. I wish to continue maintaining a strong and mutually rewarding relationship with the ACOE, DORBA, and local resources both in the Flower Mound City council who help promote the trail and the Flower Mound EMS who continually provide assistance, safety, and feedback on how to help keep your trail not only a local resource, but a 'mountain bike destination trail' that continues to attract riders from Texas, Oklahoma, Arkansas, and beyond.</p>	<p>Noted. The USACE appreciates all of the work done by volunteer groups including DORBA to help with maintenance and providing access to natural and recreational resources. The USACE welcomes further assistance and feedback, and DORBA or other groups should contact the Grapevine Lake Project Office to coordinate volunteer activities.</p>
<p>I wish to extend an invitation to any and all ACOE staff who have never ridden your Northshore Trail to contact me for a free tour, bike/helmet/local trail steward knowledge, all free. After all, it is the best way to see the entire trail!</p>	<p>Noted, and the USACE welcomes the invitation!</p>

Comment	USACE Response
<p>I strongly oppose the ban of cyclists from the Grapevine dam road. Unlike cars, cyclists do not have as many options as cars do. We cannot use high traffic roads safely. I have used many times this section on my ride from Irving to Grapevine downtown center. I understand its narrow but cars can be patient. Its such a short section. If city is concerned about safety they can change the speed limit and make this a no passing zone.</p>	<p>There is currently not a ban for bicycles on Fairway Drive. The primary purpose for the road across the dam is Project Operations and is subject to close as necessary for maintenance, safety, or security. While traffic is generally permitted, Fairway Drive is managed by the City of Grapevine, including speed limits, bicycle and pedestrian access, signage, and traffic management. For changes to Fairway Drive, please contact the City of Grapevine.</p>
<p>Fairway Drive, aka the Dam Road connects Grapevine and Flower Mound. It is regularly utilized by cyclists and the revision of the master plan provides for a unique opportunity to enhance the use of this road. While the road presents safety hazards, it is an essential route for cyclists traveling between the two cities, and I urge the Corps to take action to make the road safer for cyclists (and motorists). There are several possibilities to consider including: dropping the speed limit to 15 mph, turn the road into a park and eliminate motorized vehicle traffic altogether, create a one way motorized lane and a lane dedicated to cycling/running/walking activities, and closing the road to motorized vehicles and only allowing cycle/foot traffic. All of these options would benefit the citizens of Grapevine and surrounding areas in several ways: the park or closed road ideas could allow for other uses besides the health benefits related to cycling/running/walking such as street fairs, markets, etc. without significantly impacting a motorist's ability to travel through the area by other means. Grapevine is a town with many outdoor enthusiasts. Maintaining Fairway Drive in one of the ways mentioned above would certainly add to residents' quality of life.</p>	<p>The primary purpose for the road across the dam is Project Operations and is subject to close as necessary for maintenance, safety, or security. While traffic is generally permitted, Fairway Drive is managed by the City of Grapevine, including speed limits, bicycle and pedestrian access, signage, and traffic management. For changes to Fairway Drive, please contact the City of Grapevine.</p>
<p>I would like to express my continued support for the hunting community on Lake Grapevine. It would be nice to see the designated hunting locations and access to them expanded and protected to ensure these locations are available for future generations. Each season I meet men, women and children that are so very appreciative of the opportunity to be outdoors hunting with family and friends around Lake Grapevine. As a fellow hunter there's nothing more spectacular than seeing a father/mother/mentor of any kind who is taking the time to teach children about the love and respect of nature, wildlife, outdoors and how to enjoy the hunt.</p>	<p>Noted. Current hunting lands are available only in designated hunting areas and are limited to the boundary within land owned by the USACE. Public access points are generally limited to convenient access to roads while limiting the impacts that increased access could cause. Although there are no plans for additional public hunting access points, the USACE welcomes comments from the public. Please contact the Grapevine Lake Project Office with any specific recommendations regarding hunting access or public hunting management.</p>

Comment	USACE Response
<p>Fairway Dr- the dam road that connects Grapevine to Flower Mound: This road should be converted to a public park for the recreation and enjoyment of Grapevine residents and visitors. Grapevine is quintessential suburban sprawl, a legacy of a misguided past that modern institutions are, or should be, addressing at every opportunity. There are plenty of roads for vehicular traffic in the Lake Grapevine area. What is lacking is the infrastructure for humans. Fairway Dr. is but one piece in the puzzle of making Texas sprawl a more livable, enjoyable space. It is within your power to help make these changes into reality for our future generations. Thank you for considering this idea.</p>	<p>Noted. The primary purpose for the road across the dam is Project Operations and is subject to close as necessary for maintenance, safety, or security. While traffic is generally permitted, Fairway Drive is managed by the City of Grapevine, including speed limits, bicycle and pedestrian access, signage, and traffic management. For changes to Fairway Drive, please contact the City of Grapevine.</p>
<p>Cycling, pedestrian and other recreational access to Grapevine Dam should be maintained for the good of all lake users. Options such as reducing the speed limit across the dam should be explored to discourage vehicular cut through traffic and to ensure the safety of other users of the dam.</p>	<p>Noted. The primary purpose for the road across the dam is Project Operations and is subject to close as necessary for maintenance, safety, or security. While traffic is generally permitted, Fairway Drive is managed by the City of Grapevine, including speed limits, bicycle and pedestrian access, signage, and traffic management. For changes to Fairway Drive, please contact the City of Grapevine.</p>
<p>Regarding bicycle traffic on Fairway Drive, it would be excellent to consider options to separate bikes and vehicles. Fairway Drive is a great option for Flower Mound residents to access downtown Grapevine business and services. It is also the only option for bikes to travel between the two communities. Would the master plan consider construction of a bike only lane or path? Are there any options to drop the golf course level below the dam for such a path.</p>	<p>Master Plans do not typically designate bike lanes or shared road use. The primary purpose for the road across the dam is Project Operations and is subject to close as necessary for maintenance, safety, or security. While traffic is generally permitted, Fairway Drive is managed by the City of Grapevine, including speed limits, bicycle and pedestrian access, signage, and traffic management. For changes to Fairway Drive, please contact the City of Grapevine. There are currently no plans for moving the golf course.</p>

Comment	USACE Response
<p>Please do not shut down access of the damn road over Grapevine Lake to cyclists. This is the only thoroughfare that we have to connect Grapevine to Flower Mound. Many cyclists use this route to head to the Flower Mound area and farther north to escape the heavy traffic for long distance rides. New Freeways and infrastructure was set up for drivers on 114/121. Drivers should be using this, not the back roads. If you cannot remove or limit vehicle use on the damn road, please provide some way that cyclists (even walkers and joggers) can use to go from Grapevine to Flower Mound and vice versa. By doing this and offering a safe solution, this would also be attractive to others to come visit our beautiful cities. If there was a way to tie this into the Cottonbelt trail, this would be an absolute plus!</p>	<p>The USACE currently has no plans for banning bicycles on Fairway Drive. The primary purpose for the road across the dam is Project Operations and is subject to close as necessary for maintenance, safety, or security. While traffic is generally permitted, Fairway Drive is managed by the City of Grapevine, including speed limits, bicycle and pedestrian access, signage, and traffic management. For changes to Fairway Drive, please contact the City of Grapevine.</p>
<p>As a resident of Lewisville and frequent user of the roads and trails around Grapevine Lake, I'd like to suggest that a safe way for bicycles and pedestrians to cross the lake be incorporated at or near the dam (Fairway Drive). Currently there are no safe ways for a cyclist or pedestrian to cross the lake. The dam is narrow, has no shoulder and had heavy vehicular traffic. Considering that the lake provides great opportunities for tourism and outdoor recreation on both its North and South shores and that riders, runners, walkers, and skaters usually want to have the opportunity to explore and enjoy those opportunities, it's only logic that there should be a way for them to cross the lake without being at risk and also without interfering with traffic. Suggested solutions would be: Turn fairway drive into a horizontal park, closed to cars; Split fairway into a one way road for cars and two way multi-use path; Build a separate multi-use path along Fairway Drive or nearby.</p>	<p>Noted. The primary purpose for the road across the dam is Project Operations and is subject to close as necessary for maintenance, safety, or security. While traffic is generally permitted, Fairway Drive is managed by the City of Grapevine, including speed limits, bicycle and pedestrian access, signage, and traffic management. For changes to Fairway Drive, please contact the City of Grapevine.</p>
<p>Thank you for the opportunity to participate in the Grapevine Lake master plan. We love this lake and it is the main reason we moved here 30 years ago and stay. Since reading that recreation is one of the Corps mandates for the lake I would like to recommend that we convert the road over the dam to a park, so all could enjoy this fabulous view. Of course there would still be access to the dam equipment via trucks/cars. At the very least a speed limit of 15mph would greatly improve the safety for bikes and runners (as there is no other alternative for them between Flower Mound and Grapevine) as well as providing a way to enjoy the view. Thank you for listening to my input.</p>	<p>The primary purpose for the road across the dam is Project Operations and is subject to close as necessary for maintenance, safety, or security. While traffic is generally permitted, Fairway Drive is managed by the City of Grapevine, including speed limits, bicycle and pedestrian access, signage, and traffic management. For changes to Fairway Drive, please contact the City of Grapevine.</p>



Comment	USACE Response
<p>This comment is about Fairway Dr. The road across the dam on Grapevine Lake. Grapevine is a wonderful tourist city, and we need the ability to have public, family access across the damn. This includes walkers, runners, cyclists, skateboarding, and more. The views on the road are incredible, and worthy of taking time to get across. It is also the only way for a cyclist to get from Grapevine to Flower Mound or the other way around safely. Having the ability to ride around the lake in a full loop is a great thing, and a wonderful ride. Making this a safe throughfare for pedestrians, the ability to have and hold events on the dam could bring interest and income to the two communities. It would also bring safety for our families and friends that use Fairway Dr. Please consider lowering the speed limit, opening other opportunities for use, increasing awareness. Do not ban pedestrians, cyclists, and others from using Fairway Dr. That action will shut off opportunities to the adjoining communities, limit advancement and reduce potential revenue. Make this a destination to ride, run, walk, and enjoy. Update the master plan to make sure you bring people here to have a good time and not just drive across some old</p>	<p>The primary purpose for the road across the dam is Project Operations and is subject to close as necessary for maintenance, safety, or security. While traffic is generally permitted, Fairway Drive is managed by the City of Grapevine, including speed limits, bicycle and pedestrian access, signage, and traffic management. For changes to Fairway Drive, please contact the City of Grapevine.</p>
<p>Please please please make this a public park closed to traffic. It would be a beautiful spot for families and recreational activities. Also please do not close it to cyclists. There is no other way to get around the lake unless you're traveling on highways. Reduce the speed limit to 15mph.</p>	<p>Noted. The primary purpose for the road across the dam is Project Operations and is subject to close as necessary for maintenance, safety, or security. While traffic is generally permitted, Fairway Drive is managed by the City of Grapevine, including speed limits, bicycle and pedestrian access, signage, and traffic management. For changes to Fairway Drive, please contact the City of Grapevine.</p>
<p>Fairway Drive on the Grapevine Dam needs to be better provide for road cyclists. Cars travel at unsafe speeds and pass too close to cyclists using the road. Possible solutions are to close the road to car traffic between Marina Drive/Treatment Trail and Dalton Drive, or making it one way, or controlled (alternating traffic both ways controlled by traffic light at either location), providing a full lane of road for cyclists. Cars are largely using Fairway Drive as a cut through rather than using the higher capacity roads designed and planned for the speeds they are traveling.</p>	<p>Noted. The primary purpose for the road across the dam is Project Operations and is subject to close as necessary for maintenance, safety, or security. While traffic is generally permitted, Fairway Drive is managed by the City of Grapevine, including speed limits, bicycle and pedestrian access, signage, and traffic management. For changes to Fairway Drive, please contact the City of Grapevine.</p>

Comment	USACE Response
<p>The grapevine dam is the only connection for cyclists to ride from Flower Mound to Grapevine, and our group rides that route regularly. It is also dangerous for cyclists and frustrating for vehicles to be stuck behind a large group. I would love to see a creative use of that road that included options for both cyclists and vehicles to share the space. OR for vehicles to be banned altogether and the road turned into a pedestrian/cyclist/playground/park space. I think it is a unique opportunity to do something different and forward thinking!</p>	<p>Noted. The primary purpose for the road across the dam is Project Operations and is subject to close as necessary for maintenance, safety, or security. While traffic is generally permitted, Fairway Drive is managed by the City of Grapevine, including speed limits, bicycle and pedestrian access, signage, and traffic management. For changes to Fairway Drive, please contact the City of Grapevine.</p>
<p>Thanks for asking for my input. I would like to see the road over the dam at Grapevine Lake turned into a park for recreational use vs a road accessible to automobiles.</p>	<p>Noted. The primary purpose for the road across the dam is Project Operations and is subject to close as necessary for maintenance, safety, or security. While traffic is generally permitted, Fairway Drive is managed by the City of Grapevine, including speed limits, bicycle and pedestrian access, signage, and traffic management. For changes to Fairway Drive, please contact the City of Grapevine.</p>
<p>Thank you so much for allowing hunting at Lake Grapevine. One thing I would like to ask about... What is the justification for the "Hog hunting only" area? I have heard concerns regarding negative interactions between hunters and hikers/bicyclists, but aren't bikes forbidden from that area? There are a variety of examples but even college campuses such as Binghamton University in the state of New York has a controlled deer hunt on its college campus for example. If the issue is because of hunter safety, why not make a bowhunters education class a required to get a permit? Many of the draw hunts in the state of Texas, such as Hagerman Wildlife refuge require that certification. And most other hunters I have spoken with would be willing to get that certification or even pay a nominal fee to enter the drawing at the lake. This would also do away with non-hunters trying to enter the deer hunting program, because I know of some individuals who have put in for the hunt that did not own a bow prior to entry that went and purchased a crossbow after getting drawn. All in all, thank you for the hunting opportunity that Grapevine lake provides. It's my favorite of all the Wildlife management places in the DFW area.</p>	<p>The area in question was added in the past to the hunting program to control wild hogs in this area which are very damaging to the wildlife habitat. Hiking and equestrian trails are still open in this area.</p>

Comment	USACE Response
<p>I'm an active cyclist who uses Fairway drive 2-3 times per week. It is a beautiful ride with a spectacular view of the lake (unlike anything else I am aware of in the metroplex) - and the ONLY practical route for cyclists linking Flower Mound and Grapevine. In the case of cars, the completed 2499/121 corridors are far more efficient routes linking local highways and the airport - and certainly NOT options for cyclists. The current state where Fairways is shared between cyclists and motorists is quite dangerous. I can attest the posted speed limit of 35mph is not followed, not to mention the road rage from some drivers when held up trying to pass cyclists along this narrow road. Please take this opportunity when reconsidering the unsafe of Fairway drive to dedicate it as a pedestrian/cycling route ONLY. Other options such as further reducing the speed limit for motorists (e.g. 15mph) would not be effective - and would increase city costs through additional police presence. Also, the great idea to turn Fairway into a "park" with shade and cantilevered resting/gathering spots would be wonderful, but costly. The option I am proposing to fully dedicate Fairway as a pedestrian/cyclists route would be very cost effective to reduce the current danger.</p>	<p>Noted. The primary purpose for the road across the dam is Project Operations and is subject to close as necessary for maintenance, safety, or security. While traffic is generally permitted, Fairway Drive is managed by the City of Grapevine, including speed limits, bicycle and pedestrian access, signage, and traffic management. For changes to Fairway Drive, please contact the City of Grapevine.</p>
<p>Drop the speed limit to 15mph. This discourages cut-through cars and encourages bicyclists, runners, skaters, etc.</p> <p>Turn it into a narrow park with shaded, cantilevered resting/gathering spots, etc. It could be used for street fairs, running &amp; cycling events and festivals, without disrupting access to city streets or businesses.</p> <p>Divide the road in half, with a one-way car lane and 2 way bike lane. All with a 15mph speed limit.</p>	<p>Noted. The primary purpose for the road across the dam is Project Operations and is subject to close as necessary for maintenance, safety, or security. While traffic is generally permitted, Fairway Drive is managed by the City of Grapevine, including speed limits, bicycle and pedestrian access, signage, and traffic management. For changes to Fairway Drive, please contact the City of Grapevine.</p>
<p>My bicycle is my primary transportation. My office is in Irving, less than 10 miles from Grapevine. I have friends living there and in Flower Mound. While my interest in cycling along the lake is not exactly recreational, I certainly see many cyclists who do. Fairway Rd. is an awesome opportunity to provide a safe cycling/jogging/walking route. Reducing the speed limit and creating a separation between motorist and human powered folks would provide a needed connection for recreation at the lake. The reduced speed limit would lessen the road's use as a cut-through for motorists and increase safety for its recreational use.</p>	<p>Noted. The primary purpose for the road across the dam is Project Operations and is subject to close as necessary for maintenance, safety, or security. While traffic is generally permitted, Fairway Drive is managed by the City of Grapevine, including speed limits, bicycle and pedestrian access, signage, and traffic management. For changes to Fairway Drive, please contact the City of Grapevine.</p>

Comment	USACE Response
<p>As a resident of Farmers Branch and a bicyclist who frequently rides in the vicinity of Grapevine Lake I appreciate the opportunity to provide comments on the Grapevine Lake Master Plan.</p> <p>Current positives: The roads and parks on the south side of the lake, all the way from Katie’s Woods park to Southlake, are excellent. This area has some of the best cycling recreation in the metroplex. The roads are in good shape, and there are parks with water and restroom facilities well spaced along the south shoreline. There are even some nice trails for off-road riding in the Horseshoe and Katie’s Woods areas.</p> <p>Current negatives: Because of increases in traffic volumes and speeds over the past few years, there is really no safe way for cyclists to get from Grapevine or Coppell to the north side of the lake. We are completely cut off from safe access to the parks and recreation on the north side of the lake.</p> <ul style="list-style-type: none"> <li>- Fairway drive (the dam) has become a de-facto highway with high traffic volumes, impatient drivers, and no shoulder or bike lane for almost two miles. At best you get aggressive drivers honking at you, and at worst they crowd you off to the non-existent shoulder, risking a fall off the road. Most recreational cyclists avoid this, myself included.</li> <li>- Long Prairie is not rideable for the same reasons, except the traffic speed is much higher. Riding on Long Prairie would be suicidal.</li> <li>- Lakeside Parkway is no longer a safe viable route from 121 to Long Prairie due to the increases in traffic and the fact that the flow is usually going 50 – 55, with constant heavy truck traffic.</li> <li>- There is no safe way to go around Grapevine Lake on the west side either. The only road that crosses Denton Creek is highway 377, which has no shoulder for almost a mile where it crosses Denton Creek, and traffic here is going 70 mph. There is a definite need for a bikeway across the dam on Fairway drive. This would provide great cycling access and significantly enhance the recreational appeal of Grapevine Lake. Ideally the road at the dam would be closed to motor vehicles and limited to cyclists, joggers, and pedestrians, like the dam at Joe Pool lake is. If cars were divert to 2499 (Long Prairie) instead of using the dam it would add only about a mile to the travel distance. This longer distance would be offset by the fact that Long Prairie enables much higher speeds, and in the end most vehicles would scarcely be affected from a drive time perspective.</li> </ul> <p>Other suggestions have been proposed, such as making it one way and using the other lane as a two-way bikeway, would be an improvement as well.</p>	<p>Noted. The primary purpose for the road across the dam is Project Operations and is subject to close as necessary for maintenance, safety, or security. While traffic is generally permitted, Fairway Drive is managed by the City of Grapevine, including speed limits, bicycle and pedestrian access, signage, and traffic management. For changes to Fairway Drive, please contact the City of Grapevine.</p>

Comment	USACE Response
<p>My husband and I have lived on Grapevine Lake for more than 16 years and have watched the wildlife diminish over that time period. We love hiking the trails and the peacefulness it brings. With the increased urbanization/suburbanization of the area, it is important to have a place where we conserve our local flora and fauna. It can't always just be about us, other life forms are important to protect and should have a place to call home. Natural areas need to be preserved and appreciated for the diversity in our community. This area is also on the bird and butterfly migration routes which increases its importance and the role it plays. Please resist pressure to further intensely develop this lake. Thank you.</p>	<p>Noted. The USACE continues to manage Grapevine Lake to balance access to recreational activities while protecting natural resources. Some natural areas, including designated Environmentally Sensitive Areas and Wildlife Management Areas, have been designated in part to protect migratory bird and butterfly habitat.</p>
<p>Grapevine Lake is a haven for cyclists, hiking enthusiasts, and nature lovers. As a cyclist, Fairway Drive is a vital route to go between Flower Mound and Grapevine. While I don't want to deprive cars from using the road, I also think it needs to stay available for cycling and other activities. Allow people to enjoy the incredible view of the lake! I strongly suggest that the road is altered in this way: half of the road is used as a one-way road for cars with a speed limit of 15mph; the other half of the road is converted into a two-way path for cycling, running, and running. Thank you for considering this option.</p>	<p>Noted. The primary purpose for the road across the dam is Project Operations and is subject to close as necessary for maintenance, safety, or security. While traffic is generally permitted, Fairway Drive is managed by the City of Grapevine, including speed limits, bicycle and pedestrian access, signage, and traffic management. For changes to Fairway Drive, please contact the City of Grapevine.</p>
<p>Please do not restrict the Dam road. This is a heavily relied upon recreational corridor. The auto traffic should have limited speed if the road cannot host a bike and pedestrian lane. This area was never intended to be a high speed, high traffic area. Please preserve the Dam for all users. Thank you!</p>	<p>Noted. The primary purpose for the road across the dam is Project Operations and is subject to close as necessary for maintenance, safety, or security. While traffic is generally permitted, Fairway Drive is managed by the City of Grapevine, including speed limits, bicycle and pedestrian access, signage, and traffic management. For changes to Fairway Drive, please contact the City of Grapevine.</p>

Comment	USACE Response
<p>I love cycling. I really love cycling on country roads with low car traffic. I've always thought living in this area was perfect for cycling. I felt I lived on the edge of city and country. With more development here, that's becoming less the case. So many of the cycling routes have either been taken away or are less ideal to ride on due to increased car traffic. My friends and I used to enjoy riding a 65 mile route that went around Lake Grapevine, riding from Trophy Club to Justin, through Argyle, Flower Mound, back to Grapevine over the dam road, and back home through Southlake. The roads from here to Justin have been altered where that's no longer easy to do. Riding in Argyle, Flower Mound area are some of my favorite roads to ride in DFW, rolling hill country roads with some tree shade and views of horse farms. So another popular route is riding from Grapevine over the dam road through Argyle, Flower Mound to the Denton Square and back. I am hopeful with the future Grapevine Lake Master Plan revision, all recreation around the lake will be taken into consideration. I would love to see pathways developed to allow cycling and cars to cross the dam safely. I have seen this done in many areas around the country.</p>	<p>Noted. The primary purpose for the road across the dam is Project Operations and is subject to close as necessary for maintenance, safety, or security. While traffic is generally permitted, Fairway Drive is managed by the City of Grapevine, including speed limits, bicycle and pedestrian access, signage, and traffic management. For changes to Fairway Drive, please contact the City of Grapevine. The USACE welcomes the opportunity to work with all neighboring cities to make improvements consistent with the Master Plan.</p>
<p>I am the president of the Plano Bicycle Association, the largest cycling club in the DFW area and one of the largest in the U.S. with approximately 1,500 members. We love the Grapevine Dam route and it is one our members regularly use for group and individual rides. It would be a travesty to shut the Fairway Dr. / the dam road to cyclists. It connects Grapevine to Flower Mound and is a key route for cyclists. It's one of the most scenic views in the DFW area. If you need ideas for how to use it going forward, may I suggest the following: Drop the speed limit to 15mph. This discourages cut-through cars and encourages bicyclists, runners, skaters, etc.. Use it for street fairs, running and cycling events and festivals without disrupting access to city streets or businesses. Divide the road in half, with a one-way car land and 2 way bike lane. All with 15mph speed limit. Thank you for considering these ideas, but regardless, please keep this road open to cyclists.</p>	<p>Noted. The primary purpose for the road across the dam is Project Operations and is subject to close as necessary for maintenance, safety, or security. While traffic is generally permitted, Fairway Drive is managed by the City of Grapevine, including speed limits, bicycle and pedestrian access, signage, and traffic management. For changes to Fairway Drive, please contact the City of Grapevine.</p>
<p>Drop the speed limit to 15mph. This discourages cut-through cars and encourages bicyclists, runners, skaters, etc. Turn it into a narrow park with shaded, cantilevered resting/gathering spots, etc. It could be used for street fairs, running &amp; cycling events and festivals, without disrupting access to city streets or businesses. Divide the road in half, with a one-way car lane and 2 way bike lane. All with a 15mph speed limit. It would be nice to keep this section of road open to cyclists because it is the only option connecting Grapevine to Flower Mound for cyclists. Also - that section is super pretty.</p>	<p>Noted. The primary purpose for the road across the dam is Project Operations and is subject to close as necessary for maintenance, safety, or security. While traffic is generally permitted, Fairway Drive is managed by the City of Grapevine, including speed limits, bicycle and pedestrian access, signage, and traffic management. For changes to Fairway Drive, please contact the City of Grapevine.</p>

As a 20 year Grapevine Resident, property owner, and as the administrator of a 2500 member local cycling organization, located right here in Grapevine, Texas (known as the Grapevine Chain Gang), I feel it incumbent upon me to express my opinions and desires for the land use around Grapevine Lake, both personally and on behalf of the many I serve in our organization.

It is my understanding that some parties(unknown who it is to me) are attempting to ban the use of bicycles on the surface road across the dam. At some point in time long ago, the dam road was somewhat necessarily utilized to make travel more convenient PRIOR to the expansions of 635, 114, 121 and 26. However, the expansions of all these roads was supposed to relieve traffic congestion and improve the flow. It HAS done that, and as a local resident I use these roads ALL THE TIME. However, SOME people would choose to prioritize their personal habits over the needs of the entire community and would prefer to continue to use that road as a high speed cut-through, which is ill equipped for that kind of traffic/flow. It is narrow, it has close guard rails, no shoulder, and at the risk of being offensive, it is not all that great of a road surface anyway.

As a cyclist, I would assert that this particular road is essentially the ONLY road that reasonably connects Grapevine to Flower Mound and the other areas around the lake for access to the resources that you are in control of for recreational use. I and hundreds/thousands of others use this road every week. Some do not, but I maintain that they WOULD were it not considered dangerous to them for the narrow lanes and high speed (above the limits) traffic. Data for the cycling traffic could be partially obtained from the Strava Heatmap projects, but that represents only a fraction of actual use, as many casual and recreational cyclists DO NOT even use the platform they provide to capture that data. YET< it will still show you a high rate of utilization.

Personally, I think any consideration to lower the use of bikes and increase the utilization of automobiles on this road is moving the wrong direction. I believe that automobiles actually should be banned & diverted from use of that road, since they have all kinds of other options to go anywhere they want, that the bicycle traffic does not. But, instead of just converting this to a recreational traffic road, I do think that the use of the road and the space should be EXPANDED for better utilization of the resource for recreational purposes. Hikers, walkers, cyclists, campers, visitors, families, local businesses, virtually EVERYONE would benefit from a safe way to gain access to the unique views of the LAKE and the land below/around it by converting that roadway to a LINERAR PARK. It could be the most amazing park in this region, especially if creativity is used to engineer cantilevered spaces for vendors, food trucks, etc.,

The USACE currently has no plans for banning bicycles on Fairway Drive. The primary purpose for the road across the dam is Project Operations and is subject to close as necessary for maintenance, safety, or security. While traffic is generally permitted, Fairway Drive is managed by the City of Grapevine, including speed limits, bicycle and pedestrian access, signage, and traffic management. For changes to Fairway Drive, please contact the City of Grapevine.

Comment	USACE Response
<p>were built on the dam. It could be an attraction unto itself, and could be a new home to festivals, and could be revenue generating and lifestyle enhancing to all around the area.</p> <p>Barring the use of it as a linear park, I think it should be designated as a pedestrian and non-motorized use only roadway, which would still give better access to the lake for people who are choosing to do their transport or exercise on foot or in non-motorized vehicles. We have many recreational areas, but it is sad that many are FORCED to use an automobile just to gain access them, simply because of there not being a safe way to get across the lake in either direction.</p> <p>Another option would be to construct a cantilevered separate pathway the length of the dam for bicycles and pedestrians, but separating them from the rest of the roadway. However, I STILL feel that traffic utilizes that roadway, at way too high of a speed in general, essentially treating it as an alternative to the expressways, rather than the local, narrow, slow speed (park type) road that it should be considered.</p> <p>Please consider that these expressed opinions are not just my own, but there are literally hundreds and even thousands of local residents who are also cyclists who either use this road regularly &amp; who will be negatively impacted and be left with no way NORTH/SOUTH, except for dangerous high speed roads, or they'll simply remain unserved, out of fear, with the current or worse yet, lesser treatment under alternative proposals treating bikes as inferior to automobile traffic.</p> <p>I would suggest that the green considerations of our society today, which is intent to preserve energy and use less fossil fuels, and has the stated desire to encourage people to live healthier more active lifestyles is completely and totally better served by promoting a new vision for this dam and the road across it, instead of capitulation to those with no vision and a desire to self-serve by treating bicycle and pedestrian traffic as inferior and banishing us to hidden and ineffective areas, essentially locking us out of use of this area, which constitutes discrimination, in its purest form.</p> <p>I respectfully ask that you consider these matters, and IF there is ANYTHING I can do to provide better data, information, access to opinions of residents, or anything else you might deem necessary or fruitful, I am here and at your service.</p>	



Comment	USACE Response
<p>Convert the Lake Grapevine dam road (Fairway Drive) to non-motorized traffic (pedestrians, runners, bicyclists, etc.), and include some shaded spots with benches and maybe even picnic tables. This will connect the bike trail that runs along 26 south towards the trails that run west towards the Cotton Belt Trail. Win-win for everyone.</p>	<p>Noted. The primary purpose for the road across the dam is Project Operations and is subject to close as necessary for maintenance, safety, or security. While traffic is generally permitted, Fairway Drive is managed by the City of Grapevine, including speed limits, bicycle and pedestrian access, signage, and traffic management. For changes to Fairway Drive, please contact the City of Grapevine.</p>
<p>I would love to see Fairway Drive get a bike lane somehow. Also, the off road trails around Lake Grapevine are among my favorite recreational areas in DFW, please ensure continued access to them!</p>	<p>Noted. The primary purpose for the road across the dam is Project Operations and is subject to close as necessary for maintenance, safety, or security. While traffic is generally permitted, Fairway Drive is managed by the City of Grapevine, including speed limits, bicycle and pedestrian access, signage, and traffic management. For changes to Fairway Drive, please contact the City of Grapevine.</p>
<p>This is 2003 formal documentation (from Donald N. Wiese USACE Natural Resource Manager) that a small peninsula (Heron Point) in Oak Grove Park has been designated as an Environmentally Sensitive Area(ESA). The area (at that time) was designated as OG6 &amp; 6A (see Map and formal documentation).</p> <p>The map currently posted (2022) on your Lake Grapevine Master Plan Web Page designates the area as ESA7. The color seems to be GRAY indicating the above-designated area OG6 &amp; 6A/Heron Point remains an Environmentally Sensitive Area. Please confirm that this designation HAS NOT CHANGED.</p> <p>Also, this area is also designated as a NO WAKE ZONE. I am informing you that most current boaters have been IGNORING this NO WAKE ZONE classification. My suggestion is to larger and more visible buoys and place them in the center of the WAKE ZONE. The current buoys have drifted closer to the South/East shoreline.</p>	<p>"Noted. This area will continue to be designated as an ESA.</p> <p>The USACE continues to monitor buoy size and placement, as they often drift due to weather and wave action. Please contact the Grapevine Lake Project Office if you have noticed the buoys placements need adjustments or to report immediate safety concerns.</p>

Comment	USACE Response
<p>The map currently posted (2022) on your Lake Grapevine Master Plan Web Page designates the area as ESA7. The color is GRAY indicating the above-designated area is an Environmentally Sensitive Area (ESA). I am requesting that the RED AREA surrounding ESA7 be re-designated to LOW-DENSITY RECREATION (Light Blue) area. There is no reason for this surrounding ESA7 to be designated HIGH-DENSITY RECREATION. Why? Because there is no vehicle access to this area. It may be accessed by boat or natural road pathways. It will also help preserve the existing ESA7 area.</p>	<p>ESA 7 will be expanded to include portions of the shoreline. However, portions south of the ESA are used by boat access and will remain High Density Recreation."</p>
<p>Because one of the Corp's mandates is to provide recreational opportunities for Lake Grapevine, I believe it would improve the recreational options to consider alternative uses for Fairway Dr- the dam road that connects Grapevine to Flower Mound. Here are some alternatives that I propose for consideration: Drop the speed limit to 15mph. This discourages cut-through cars and encourages bicyclists, runners, skaters, etc.. Turn it into a narrow park with shaded, cantilevered resting/gathering spots etc.. It could be used for street fairs, running and cycling events, and festivals without disrupting access to city streets or businesses. Divide the road in half, with a one-way car lane and 2-way bike lane. All with a 15mph speed limit.</p>	<p>Noted. The primary purpose for the road across the dam is Project Operations and is subject to close as necessary for maintenance, safety, or security. While traffic is generally permitted, Fairway Drive is managed by the City of Grapevine, including speed limits, bicycle and pedestrian access, signage, and traffic management. For changes to Fairway Drive, please contact the City of Grapevine.</p>
<p>Bike lanes are essential for community well being, and allowing bicyclists safe room in a lane. A lower speed limit on the Dam Road to allow safe passage for bikes and cars would be great.</p>	<p>Noted. The primary purpose for the road across the dam is Project Operations and is subject to close as necessary for maintenance, safety, or security. While traffic is generally permitted, Fairway Drive is managed by the City of Grapevine, including speed limits, bicycle and pedestrian access, signage, and traffic management. For changes to Fairway Drive, please contact the City of Grapevine.</p>
<p>Preservation of greenspace is critical to our future health and safety. Greenspace well managed with responsible public access not only makes our communities more livable but also increases the economic vitality of our cities.</p>	<p>Noted.</p>

Comment	USACE Response
<p>Ideally bike lane across the dam should be installed to improve safety. Alternatively decrease speed limit. It is only option for bikers. Cars have many options.</p>	<p>Noted. The primary purpose for the road across the dam is Project Operations and is subject to close as necessary for maintenance, safety, or security. While traffic is generally permitted, Fairway Drive is managed by the City of Grapevine, including speed limits, bicycle and pedestrian access, signage, and traffic management. For changes to Fairway Drive, please contact the City of Grapevine.</p>
<p>I travel over the Dam about once every two weeks, so not very often. But bicycle travel and car travel is essential to smooth traffic in Grapevine area. Please keep the slow 30 mph speed limit and keep the Dam open to bicycles and cars.</p>	<p>Noted. The primary purpose for the road across the dam is Project Operations and is subject to close as necessary for maintenance, safety, or security. While traffic is generally permitted, Fairway Drive is managed by the City of Grapevine, including speed limits, bicycle and pedestrian access, signage, and traffic management. For changes to Fairway Drive, please contact the City of Grapevine.</p>
<p>My vision is to have the Dam Road connectivity Grapevine and Flower Mound be safe for runners and cyclists. This will allow us to be more environmentally friendly and less carbon emission as we commute from one town to another.</p>	<p>Noted. The primary purpose for the road across the dam is Project Operations and is subject to close as necessary for maintenance, safety, or security. While traffic is generally permitted, Fairway Drive is managed by the City of Grapevine, including speed limits, bicycle and pedestrian access, signage, and traffic management. For changes to Fairway Drive, please contact the City of Grapevine.</p>
<p>Access for bicyclists on Grapevine Dam is instrumental to success and development of community. Ensuring the safety of cyclists is crucial to them and the motorists. Please add a bike lane on the East side.</p>	<p>Noted. The primary purpose for the road across the dam is Project Operations and is subject to close as necessary for maintenance, safety, or security. While traffic is generally permitted, Fairway Drive is managed by the City of Grapevine, including speed limits, bicycle and pedestrian access, signage, and traffic management. For changes to Fairway Drive, please contact the City of Grapevine.</p>

Comment	USACE Response
<p>Bicycle access to the Grapevine Dam Road is critical to the bicycle community in the greater Grapevine area. Adding a bike lane (shelf) on the East side of the current road would preserve traffic flow and ensure the safety of all users of the road.</p>	<p>Noted. The primary purpose for the road across the dam is Project Operations and is subject to close as necessary for maintenance, safety, or security. While traffic is generally permitted, Fairway Drive is managed by the City of Grapevine, including speed limits, bicycle and pedestrian access, signage, and traffic management. For changes to Fairway Drive, please contact the City of Grapevine.</p>
<p>Meant to be a shelf or bike lane access the bridge, we need access that is safe and does not back traffic.</p>	<p>Noted. The primary purpose for the road across the dam is Project Operations and is subject to close as necessary for maintenance, safety, or security. While traffic is generally permitted, Fairway Drive is managed by the City of Grapevine, including speed limits, bicycle and pedestrian access, signage, and traffic management. For changes to Fairway Drive, please contact the City of Grapevine.</p>
<p>As cyclists, we want to be as safe as possible without impeding traffic. Adding a dedicated bike or shelf lane would protect us as well as keep traffic flowing at a safe, consistent speed.</p>	<p>Noted. The primary purpose for the road across the dam is Project Operations and is subject to close as necessary for maintenance, safety, or security. While traffic is generally permitted, Fairway Drive is managed by the City of Grapevine, including speed limits, bicycle and pedestrian access, signage, and traffic management. For changes to Fairway Drive, please contact the City of Grapevine.</p>
<p>WE utilize Fairway Drive as a route on our bikes to Grapevine. The route is a lovely view of the lake from the dam and a pleasant way to experience nature and the outdoors. Cars are traveling far too fast and it is unsafe. We know cars use this as a cut-through between highway 121 and I35. We support a lower speed limit. We support this road so maybe into a one way (15mph) car lane and use the other half for 2 way bike and pedestrian. This would encourage tourism and provide a safe entry into Grapevine tourists on SHS.</p>	<p>Noted. The primary purpose for the road across the dam is Project Operations and is subject to close as necessary for maintenance, safety, or security. While traffic is generally permitted, Fairway Drive is managed by the City of Grapevine, including speed limits, bicycle and pedestrian access, signage, and traffic management. For changes to Fairway Drive, please contact the City of Grapevine.</p>

Comment	USACE Response
<p>As one of the Paddle Boarders who is frequently on the lake, I am also concerned for swimmers, paddlers and kayakers who may be sharing the lake with 'high speed' boaters close to the shoreline. I was paddling last week with Debbie Bryant when the incident occurred with our group of swimmers. We often paddle board with the swimmers in an effort to be more visible to boaters and for the safety of the swimmers. I have attached a map of the location that Debbie mentioned in her letter. I have added the area where 1-3 buoys 'No Wake Buoys' would be appreciated and helpful. These buoys would provide awareness to others there is a need to go slow through the area as well as help save our shoreline that is eroding. Please consider this request for the safety of all who use Lake Grapevine!</p>	<p>The cove to the west of Mustang Island is designated as a no wake area and marked with buoys. The area between Mustang Island and the shoreline is not feasible to keep buoys due to fluctuating water levels and waves from the open water on the lake. However, all boaters are responsible for following TPWD's rules and regulations on boating and watercraft operations. The regulation states that boaters must operate watercraft at a slow headway speed that does not create a wake or swell within 50 feet of any shoreline, property, watercraft, person, or structure; whether there is a buoy present or not. Please contact local law enforcement or the Grapevine Lake Project Office to report immediate safety concerns.</p>
<p>First I would like to thank you for all that you do at Lake Grapevine to keep it fun and safe for all of us who enjoy it on a weekly basis. From the trails to the parks to the facilities, all are most appreciated. With that in mind, I would like to respectfully request that a "No Wake" buoy be replaced northwest of Minnow Loop between the lakeshore and what I know as "Snake Island". It is one of the few places where many of us swim and paddle frequently because it is safe, protected area (and accessible to swimmers). There was a buoy there for many years but it was not replaced after the huge flood we experienced several years ago. Since the "No Wake" buoy has been gone, several of us have unfortunately experienced unsafe encounters with boaters who are sometimes unaware of (or unconcerned about) our presence. There has also been significant erosion of the shoreline because of the boat traffic/waves, as I'm sure you are well aware.</p>	<p>The cove to the west of Mustang Island is designated as a no wake area and marked with buoys. The area between Mustang Island (not Snake Island) and the shoreline is not feasible to keep buoys due to fluctuating water levels and waves from the open water on the lake. However, all boaters are responsible for following TPWD's rules and regulations on boating and watercraft operations. The regulation states that boaters must operate watercraft at a slow headway speed that does not create a wake or swell within 50 feet of any shoreline, property, watercraft, person, or structure; whether there is a buoy present or not. Please contact local law enforcement or the Grapevine Lake Project Office to report immediate safety concerns.</p>

Comment	USACE Response
<p>The "Title 36" document on your website states (p.7): "(d) No person shall operate any vessel or other watercraft in a careless, negligent, or reckless manner so as to endanger any person, property, or environmental feature." I can guarantee you that this individual violated every aspect of this statement. It was a frightening experience and could have ended in significant injury or even death in this insta. I have cc'd a couple of groups and bcc'd several individuals on this email who might agree with me and hopefully they will also speak up. My recent close call occurred this past Friday (June 24) at 8:25 in the morning. Our group consisted of two paddleboarders and 4 swimmers (all who use bright orange safety buoys whenever in the lake). My friend and I on paddleboards noticed a ski boat coming from the area of Sand Bass Point going very fast with a skier behind. It was quite close to the shore and on a collision course with our group. We both were sure the boat driver would veer off, but he never did. He came full speed, right at our group, and passed less than 20 feet from one of the swimmers. I was frantically signaling and screaming at the top of my lungs but he totally disregarded me and purposely came dangerously close. His only sign of recognition was a hand gesture as he passed. Whether a "No Wake" buoy would have made a difference to this individual, I cannot say, but at least it might stop someone else from endangering the lives of the swimmers and others who have only a limited area in the lake where they can feel safe. Thank you for considering replacing the "No Wake" buoy as requested and I look forward to hearing from you. Thank you again for all you do to keep our lake clean, safe, and accessible to all.</p>	<p>The cove to the west of Mustang Island is designated as a no wake area and marked with buoys. The area between Mustang Island and the shoreline is not feasible to keep buoys due to fluctuating water levels and waves from the open water on the lake. However, all boaters are responsible for following TPWD's rules and regulations on boating and watercraft operations. The regulation states that boaters must operate watercraft at a slow headway speed that does not create a wake or swell within 50 feet of any shoreline, property, watercraft, person, or structure; whether there is a buoy present or not. Please contact local law enforcement or the Grapevine Lake Project Office to report immediate safety concerns.</p>
<p>Thank you for allowing/organizing public hunting opportunities at Lake Grapevine.</p>	<p>Noted.</p>
<p>Please keep the damn road open for cyclists. Only route available to cross lake. Speed restrictions or separated lane are both amenable. Thanks</p>	<p>Noted. The primary purpose for the road across the dam is Project Operations and is subject to close as necessary for maintenance, safety, or security. While traffic is generally permitted, Fairway Drive is managed by the City of Grapevine, including speed limits, bicycle and pedestrian access, signage, and traffic management. For changes to Fairway Drive, please contact the City of Grapevine.</p>
<p>I am writing to express my support for continued hunting at Lake Grapevine.</p>	<p>Noted. The USACE does not have any plans to stop hunting at Grapevine Lake.</p>

Comment	USACE Response
<p>1. The Grapevine Lake project is a multi-use facility. Hunting is, and will continue to be, a legal means of managing wildlife on Project Lands. Population control via hunting assists in reducing wildlife vehicle strikes and reducing invasive species numbers (feral hog).</p> <p>2. Presented the idea that some feral hogs shot via archery are not recovered or live. Means and Methods should allow shotguns with slugs and/or muzzleloaders to be used for larger game. LBJ grasslands, a federally-owned and operated National Grassland in Wise County, Texas allows muzzleloaders and shotguns despite being surrounding by private property and residences, and with far smaller acreages in some instances to the Grapevine Lake WMA.</p> <p>3. A concerned landowner expressed that she did not like firearms being discharged by duck hunters near her home. She was respectfully informed of the mixed-use status of the Grapevine Lake Project Lands by USACE Park Rangers and hunters.</p> <p>4. Illegal OHV use on Project Lands has been identified in several locations. Tactics to reduce and discourage illegal OHV use were discussed.</p> <p>5. Adding beehives to Project Lands improves wildlife habitat and local vegetation communities.</p> <p>6. Management of <i>Ligustrum sinense</i> / <i>Ligustrum quihoui</i> is becoming more necessary to maintain wildlife habitat integrity.</p> <p>7. Possible hunter volunteer program discussed for planting food plots/management of <i>Ligustrum</i>.</p>	<p>Noted. The USACE concurs with these comments. The USACE is aware of the <i>Ligustrum</i> issue and are working on budgets to remove invasive species.</p>
<p>Concerning the proposed ban of bicycles on Fairway Dr. I understand the concern that the road is narrow, but the problem here are cars that use this narrow road as a way to cut through, disregarding speed limits and zooming past at 50-60mph. The lake is a beautiful gem that Grapevine has and it's a place for people to enjoy nature and exercise. Fairway Dr is used daily by hundreds of cyclists and it's their only way to bike safely from flower mound to grapevine. Banning bicycles on this stretch of road would be wrong and not a sign of where a modern city should head towards. Rather, the road could be redesignated to allow everyone to enjoy it and use it safely, limiting the dangers of speeding drivers. I think there would be enough room to create a 2 way bike lane and leave enough room for cars, posting very low speed limits (30mps) and possibly even speed bumps. Thank you for giving us the possibility to voice our opinions and I hope Grapevine will accept progress instead of the easy way out.</p>	<p>Noted. The primary purpose for the road across the dam is Project Operations and is subject to close as necessary for maintenance, safety, or security. While traffic is generally permitted, Fairway Drive is managed by the City of Grapevine, including speed limits, bicycle and pedestrian access, signage, and traffic management. For changes to Fairway Drive, please contact the City of Grapevine.</p>

Comment	USACE Response
<p>Please allow and encourage bicycle and non-motorized traffic on Fairway Dr. for the section across the Grapevine Lake Dam. Banning motorized vehicle access will transform the area by connecting the area parks in a safe manner that encourages community while enhancing the prestige of the area. Safe and connected outdoor spaces are rare metropolitan Dallas- Fort Worth area and the ones that exist have seen a windfall of popularity and prestige.</p>	<p>Noted. The primary purpose for the road across the dam is Project Operations and is subject to close as necessary for maintenance, safety, or security. While traffic is generally permitted, Fairway Drive is managed by the City of Grapevine, including speed limits, bicycle and pedestrian access, signage, and traffic management. For changes to Fairway Drive, please contact the City of Grapevine.</p>
<p>Hello, Thanks for asking for my opinion. I have lived in this area since 1987. I have biked the dam road many times. I love the dam road and feel that we have plenty of car options with 2399 and 121 to get from Lewisville to Grapevine and would like to see the dam road a park for runners, skaters, and bicyclists. At the very least if this continues to need to be a motorized vehicle access, I would like the speed limit to be 15mph for cars and to develop a bicyclist/runners lane.</p>	<p>Noted. The primary purpose for the road across the dam is Project Operations and is subject to close as necessary for maintenance, safety, or security. While traffic is generally permitted, Fairway Drive is managed by the City of Grapevine, including speed limits, bicycle and pedestrian access, signage, and traffic management. For changes to Fairway Drive, please contact the City of Grapevine.</p>
<p>I live in Richardson and am an active, avid bicyclist, both road and mountain bike. You already know that the Grapevine lake / DORBA mountain bike trail is one of the most popular and successful in the nation, and has for years been a model for other similar trails nationwide. I'm a big fan of that trail and that type of partnership and of course want to see it continued and expanded. On the road, you also probably already know that there are several very popular road cycling routes in the lake area. Most relevant to this effort: the road across the Grapevine Dam is a very popular and important connector from the North to the South side of the lake. There really are no "bike friendly" alternate routes nearby. Long Prairie Rd / Hwy 2499 and Hwy 26 are both major high speed roads and not suitable for casual / recreational bicycling. There are rumors that the City of Grapevine wants to "close" the dam road to bicyclists. I oppose this, of course. First, the State of Texas has made it clear in several past cases that the city simply does not have this authority. Bicycles are vehicles with the same rights to the road as all other road users. To the extent that the ACOE can influence this matter, I urge you to keep the dam road open to bicyclists, and as budget and other needs allow, support any efforts to encourage more bicycle use of this road.</p>	<p>The USACE currently has no plans for banning bicycles on Fairway Drive. The primary purpose for the road across the dam is Project Operations and is subject to close as necessary for maintenance, safety, or security. While traffic is generally permitted, Fairway Drive is managed by the City of Grapevine, including speed limits, bicycle and pedestrian access, signage, and traffic management. For changes to Fairway Drive, please contact the City of Grapevine.</p>



Comment	USACE Response
<p>On behalf of the Cross Timbers Equestrian Trail Association (CTETA), we greatly appreciate the equestrian trails in Southlake, Trophy Club and Flower Mound.</p> <p>These trails are used extensively by equestrians, hikers, birdwatchers. It's nice to have trails that are not multiuse for our safety and tranquility.</p> <p>We would like to have a bigger and more accessible parking area for the Rocky Point Trail. This would be a great benefit to hikers as well as equestrians, making the trails more accessible to all. I see a lot of hikers parking a long side the road to access these trails.</p>	<p>Noted. There are two parking trailheads that connect to different parts of the Rocky Point Trail. The western trailhead off of Dunham Road is on USACE property and is leased and managed by the Town of Flower Mound. The eastern trailhead is located off of USACE property near the corner of Sunnyview Lane and High Road and is also managed by the Town of Flower Mound. For comments or recommendations to these areas, please contact the Town of Flower Mound.</p>
<p>I am writing as a resident of Grapevine to express my strong support for continued hunting at Lake Grapevine. Although apparently hunting is outside the scope of this revision, it was listed as a talking point so I feel it is important to make my opinion known. Lake Grapevine represents one of the finest sporting opportunities in the metroplex, and the practice of hunting as it is currently allowed does no harm to anyone. Additionally, hunting is an important habitat and population management technique. For what it's worth, I am involved in an active discussion group specifically regarding Lake Grapevine, one which the Corps is aware of and active on, with dozens of other stakeholders who feel the same way as me on this issue. I would like to voice my recommendation for an edit on page 91, or 5-8, of the draft master plan, where acceptable uses for Environmentally Sensitive Area are listed as including "Passive public use such as natural surface trails, bank fishing, and nature study." Since I had it verbally confirmed to me at the comment meeting that hunting is another of these acceptable uses, I would like to see it added so we have it in writing for the future. Hunting already takes place in much of the land to be redesignated ESA, so this edit would reflect the current state of rules and protect future hunting. While you are at it, I think the descriptions of other areas such as Low-Density Recreation and Wildlife Management should be edited to include hunting use as well. Hunting is already mentioned on page 159 and perhaps on others, but I would like to see it front and center, so to speak. Thank you for your consideration, and for your dedicated stewardship of this and other lakes.</p>	<p>Concur, hunting is a passive use that is allowable in ESAs as long as sensitive resources are not adversely affected.</p>

Comment	USACE Response
<p>As a cyclist who has cycled across the damn over a thousand times I urge the planners to continue to allow cyclists on the damn. There are precious few roads for us to use around the lake and this one is key. I am sure a way can be figured out that allows us to ride safely.</p>	<p>Noted. The primary purpose for the road across the dam is Project Operations and is subject to close as necessary for maintenance, safety, or security. While traffic is generally permitted, Fairway Drive is managed by the City of Grapevine, including speed limits, bicycle and pedestrian access, signage, and traffic management. For changes to Fairway Drive, please contact the City of Grapevine.</p>
<p>Because one of the Corps' mandates is to provide recreational opportunities for Lake Grapevine, I believe it would improve the recreational options to consider alternative uses for Fairway Dr- the dam road that connects Grapevine to Flower Mound. Here are some alternatives that I propose for consideration:</p> <ul style="list-style-type: none"> <li>• Drop the speed limit to 15mph. This discourages cut-through cars and encourages bicyclists, runners, skaters, etc.</li> <li>• Turn it into a narrow park with shaded, cantilevered resting/gathering spots, etc. It could be used for street fairs, running &amp; cycling events, and festivals, without disrupting access to city streets or businesses.</li> <li>• Divide the road in half, with a one-way car lane and 2-way bike lane. All with a 15mph speed limit.</li> </ul>	<p>Noted. The primary purpose for the road across the dam is Project Operations and is subject to close as necessary for maintenance, safety, or security. While traffic is generally permitted, Fairway Drive is managed by the City of Grapevine, including speed limits, bicycle and pedestrian access, signage, and traffic management. For changes to Fairway Drive, please contact the City of Grapevine.</p>
<p>Comment from the City of Southlake are provided as figures below.</p>	<p>Responses to these comments are provided after the figures for those comments.</p>
<p>Comment from Texas Parks and Wildlife Department are provided as figures below.</p>	<p>Responses to these comments are provided after the figures for those comments.</p>

## F.2.1 Comments from the City of Southlake



June 30, 2022

U.S. Army Corps of Engineers  
Attn: John Mathney, Grapevine Lake Manager  
U.S. Army Corps of Engineers  
110 Fairway Drive, Grapevine, TX 76051

Dear Mr. Mathney,

Thank you for allowing the City of Southlake (City) the opportunity to provide comments on the draft Grapevine Lake Master Plan - dated June 2022.

Grapevine Lake and the adjacent U.S. Army Corps of Engineers' (USACE) property is an outstanding ecological, educational, and passive recreational asset for the City which we desire to protect to allow future generations to enjoy. The area provides tremendous benefits to the City including a diverse natural ecosystem ranging from the post oak savannah to the lake edge mud flats, an important wildlife habitat and critical flood storage. The existing walking and equestrian trails on the USACE property allow residents and visitors an opportunity to experience this unique and outstanding natural resource firsthand.

### **Background**

The City has a long tradition of land use and open space master planning via its various Comprehensive Master Plan documents and has adopted multiple recommendations for the use of USACE property located within its corporate limits. Below are some applicable recommendations found in the various City Comprehensive Master Plan documents.

#### Southlake 2035 Vision, Goals, and Objectives (Adopted by City Council on June 20, 2017)

Objective 4.13 Pursue recreational and educational opportunities on Corps of Engineers' property compatible with the goal of protecting and preserving the existing ecosystem for future generations.

Objective 7.7 Recognize the importance of and protect the biological diversity for the ecological and aesthetic benefits to the community.

City of Southlake Comments on the Lake Grapevine Master Plan

**Figure F.19 Comment from City of Southlake (Page 1 of 9)**

Objective 7.8 Define, protect, and celebrate the local Cross Timbers Ecosystem as a community asset for future generations.

Objective 7.9 Assess and minimize the ecological impact of any new trails provided on Corps of Engineers' property.  
Southlake 2035 Master Parks, Recreation and Open Space Plan (Adopted by City Council on June 15, 2022)

*Southlake can also be characterized by its abundant natural resources in the Lake Grapevine vicinity and within walking distance of many neighborhoods. The City has made a very strong commitment to both natural resource protection and preservation of natural open space (p.7).*

Southlake 2035 Environmental Resource Protection Map (Adopted by City Council on June 15, 2022)

*The City's Environmental Resources Protection Map identifies areas of critical natural resources in the City that should be protected and preserved. This map identifies the Corp of Engineers' property and indicates that tree cover and open space in this area be preserved where appropriate (See Attachment #1).*

The current "Intensive Recreation" designation on the 2001 Existing USACE Land Use Classification Map for land within the City of Southlake is inconsistent with the City of Southlake Master Plan recommendations. The existing USACE 2001 land use designation of "Intensive Recreation" permits intensive recreational activities, commercial concessions and quasi-public development while the City's Master Comprehensive Plan recommendations for the USACE land more protective and passive in nature.

Based on land use policies established in the City's Comprehensive Master Plan recommendations, a letter dated June 20, 2020 was sent to the USACE which requested that the 2001 land use designation ("Intensive Recreation") for land within the City be reclassified in the upcoming 2022 Grapevine Lake Master Plan. Specifically, the request was to change the USACE land use designation from "Intensive Recreation" to a designation that better reflects the current activity on the property (hiking and equestrian trails, with corresponding safety or educational trail signage). Also, in this 2020 letter, the City requested that it retain the ability to improve and maintain any City-owned roadways or bridge structures (with proper permitting) that cross USACE property.

City of Southlake Comments on the Lake Grapevine Master Plan

**Figure F.20 Comment from City of Southlake (Page 2 of 9)**

**City of Southlake's position on proposed 2022 Grapevine Lake Master Plan**

The City of Southlake has reviewed the 2022 Grapevine Lake Master Plan and is very supportive and appreciative of the proposed land use designation changes for USACE land located in the City from the "Intensive Recreation" designation to "Wildlife Management Area", "Environmental Sensitive Area (ESA)" or "Low Density Recreation" designations. This support is with the understanding that the current activities now occurring on the USACE property and listed in the proceeding paragraph may continue.

Also, the City understands the basis for the "High Density Recreation" classification for portions of Bob Jones Park and Walnut Grove Park (aka – Bob Jones Park by the City) located within USACE land. It is understood that this designation was placed on these park areas as it reflects current uses/activities such as existing hard surface trails, day camps and shelters. The City understands the basis for the designation but respectfully requests that the intensity of activities on these park lands remain at the same level as exist today and is not supportive of any future intensive or commercial activity use on these properties.

The City is also supportive in partnering with the USACE in improving or maintaining existing trails and access points to meet the needs of the local users. Finally, the draft Grapevine Lake Master Plan refers to the City as the "Town of Southlake". Please correct to the "City of Southlake".

In terms of the water surface classification adjacent to Southlake properties, the City requests a classification that allows the public to access the water surface via Southlake exclusively through hiking or horseback. The City is opposed to water surface access via any motorized vehicles, unless currently in place for a private property. Also, the City is opposed to a public marina or other commercial activity on or near the water surface adjacent to Southlake properties.

Thank you for allowing the City the opportunity to comment on the draft 2022 Grapevine Lake Master Plan and the USACE responsiveness to the City's 2020 letter. If you have any questions, please feel free to contact Ken Baker, Senior Director of Planning and Development at [kbaker@ci.southlake.tx.us](mailto:kbaker@ci.southlake.tx.us) or (817) 748-8067.

Sincerely,



Allison Ortowski  
Assistant City Manager

City of Southlake Comments on the Lake Grapevine Master Plan

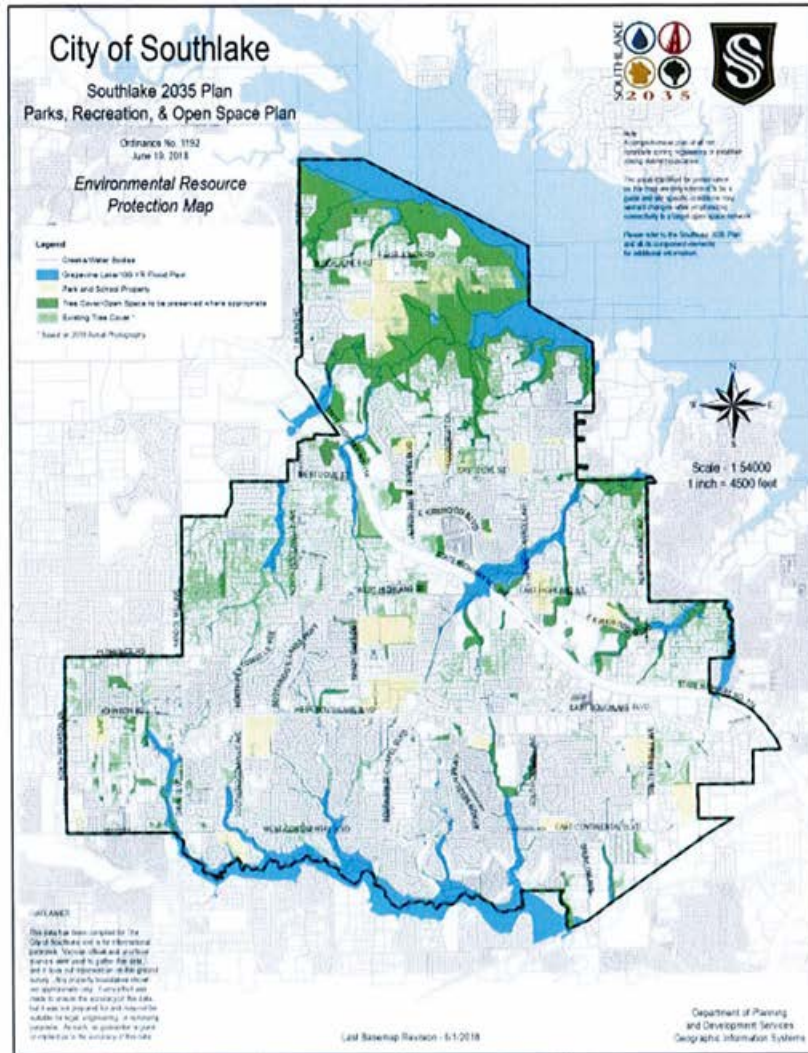
**Figure F.21 Comment from City of Southlake (Page 3 of 9)**

- Attachments: (1) City of Southlake Environmental Resources Map  
(2) City of Southlake Comprehensive Plan References  
(3) Lake Grapevine Master Plan Existing 2001 Land Use Classifications  
Map and Proposed 2022 Land Use Classifications

City of Southlake Comments on the Lake Grapevine Master Plan

**Figure F.22 Comment from City of Southlake (Page 4 of 9)**

**Attachment #1 – Environmental Resources Map**



**Figure F.23 Comment from City of Southlake (Page 5 of 9)**

**Attachment - #2 City of Southlake Comprehensive Plan References (See Objectives 4:13, 7.7, 7.7 and 7.9)**

SOUTHLAKE 2035 VISION STATEMENT

Southlake will continue to enhance its status as a desirable, attractive, safe, healthy and fiscally-sound community with quality neighborhoods, while maintaining a high standard of living, learning, shopping, working, recreation, and open spaces. Southlake will continue to be a vibrant community that epitomizes both economic and environmental sustainability.

SOUTHLAKE 2035 GOALS & OBJECTIVES

Goal 4: Parks, Recreation and Open Space

Support a comprehensive integrated parks, recreation and open space system for all ages that creates value and preserves natural assets of the City.

Objective 4.1 Ensure that new development incorporates usable open space.

Objective 4.2 Ensure that parkland and open spaces include an integrated mix of developed and natural areas with consideration of protecting the City's ecosystem and wildlife corridors.

Objective 4.3 Promote water conservation and reuse in the design of parks and open spaces.

Objective 4.4 Utilize partnerships to create open space and recreation facilities.

Objective 4.5 Ensure an even geographic distribution of park facilities and recreation activities—both active and passive—for citizens of all ages.

Objective 4.6 Provide a full range of park facilities and linear linkages that will accommodate the current and future needs of the City's residents and visitors.

Objective 4.7 Integrate passive recreational opportunities into preserved natural and drainage areas.

Objective 4.8 Incorporate feedback received from the Parks and Recreation Citizen

City of Southlake Comments on the Lake Grapevine Master Plan

**Figure F.24 Comment from City of Southlake (Page 6 of 9)**



Survey into recreation activities and park facilities.

Objective 4.9 Acknowledge the City's rich natural history, heritage and historical landmarks.

Objective 4.10 Determine parkland desirable for dedication as part of the development process based on classification, location and maintenance cost.

Objective 4.11 Prioritize investments in existing and established parks understanding that there will be strategic opportunities for land acquisition.

Objective 4.12 Incorporate educational and learning opportunities within parks and related facilities.

Objective 4.13 Pursue recreational and educational opportunities on Corps of Engineers property compatible with the goal of protecting and preserving the existing ecosystem for future generations.

#### Goal 7: Sustainability

Encourage the conservation, protection, enhancement and proper management of the natural and built environment.

Objective 7.1 Maintain and implement policies to reduce the use of nonrenewable resources, such as energy in the heating, cooling, and operation and maintenance of city facilities.

Objective 7.2 Promote public awareness and education on such sustainability issues as public health, energy and water conservation and overall environmental stewardship.

Objective 7.3 Promote sustainable public and private development practices and patterns, building design, water-use reduction and waste reduction while maintaining the existing character of the city.

Objective 7.4 Protect surface, storm, and groundwater quality from septic discharge, impervious surface runoff, improper waste disposal and other potential contaminant sources.

Objective 7.5 Conserve, restore and promote tree and plant cover that is native or adaptive to the City and region while also protecting existing significant vegetation and maintaining the existing character of the City.

City of Southlake Comments on the Lake Grapevine Master Plan

**Figure F.25 Comment from City of Southlake (Page 7 of 9)**

Objective 7.6 Protect and enhance air quality in coordination with federal, regional and local agencies.

Objective 7.7 Recognize the importance of and protect the biological diversity for the ecological and aesthetic benefits to the community.

Objective 7.8 Define, protect, and celebrate the local Cross Timbers Ecosystem as a community asset for future generations.

Objective 7.9 Assess and minimize the ecological impact of any new trails provided on Corps of Engineers property.

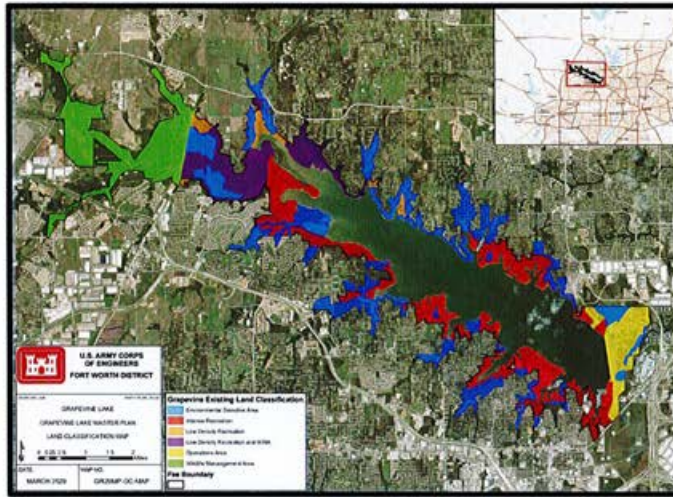
City of Southlake Comments on the Lake Grapevine Master Plan

**Figure F.26 Comment from City of Southlake (Page 8 of 9)**

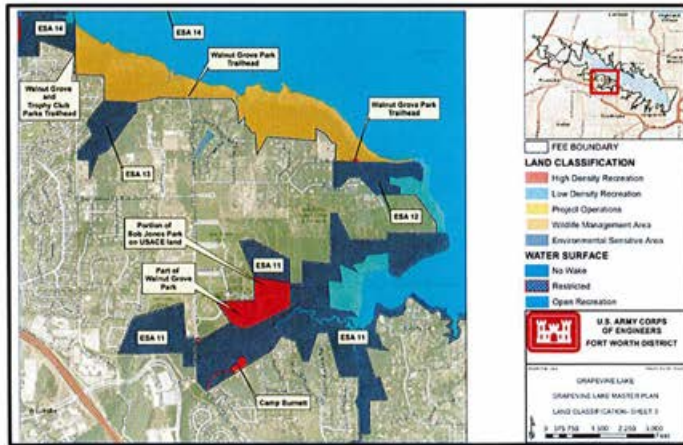
**Attachment 3 – “Existing” and “Proposed” Lake Grapevine Land Classification Map**

The City of Southlake is opposed to the “Intense Recreation” land use designation for USACE land within the City of Southlake as identified in the 2001 Master Plan and is supportive of the recommended land use changes in the proposed 2022 plan.

**Current 2001 Grapevine Lake Master Plan Land Use Designations**



**Proposed 2022 Grapevine Lake Master Plan Land Use Designations**



City of Southlake Comments on the Lake Grapevine Master Plan

**Figure F.27 Comment from City of Southlake (Page 9 of 9)**

### Response to City of Southlake

The USACE concurs with the City of Southlake that Grapevine Lake and adjacent USACE property is an outstanding ecological, educational, and passive recreational asset to the City and all local residents and concur with the desire to protect these assets for future generations. The USACE has noted the provided comments including the 2035 Vision, Goals, and Objectives. These visions, goals, and objectives are consistent with the goals and objectives provided in the Master Plan and with the land classifications designated at Grapevine Lake.

The USACE also concurs with the comment to protect natural resources including tree cover and open spaces as indicated in the included maps. Regarding proposed changes from Intensive Recreation in the 2001 Master Plan, changes were made from Intensive Recreation to Wildlife Management Area, Low Density Recreation, or Low Density Recreation, as described in Attachment 3, and the USACE acknowledges the support for those changes by the City of Southlake.

Current activities and recreational facilities within Bob Jones Park and Walnut Grove Park are reflected in the High Density Recreation classification, but no additional intensive uses or facilities are planned for those parks. The USACE welcomes the opportunity to work with the City of Southlake and other stakeholders to make improvements to parks, trails, or other facilities or to further enhance access to natural or recreational resources. The USACE also concurs with the comment to restrict motorized vehicle access to the water surface except in areas currently permitted, such as boat ramps and marinas, in order to help protect natural and recreational resources at Grapevine Lake.

The USACE will correct the text to “City of Southlake” in the final Master Plan.

## F.2.2 Comments from Texas Parks and Wildlife Department



June 14, 2022

Lake Manager  
U.S. Army Corps of Engineers  
110 Fairway Drive  
Grapevine, TX 76051  
Email: CESWF-PER-Grapevine@usace.army.mil

Re: Draft Grapevine Lake Master Plan and Environmental Assessment  
Denton and Tarrant Counties, Texas

Dear Lake Manager:

Texas Parks and Wildlife Department (TPWD) received the June 2, 2022, Notice of the Availability of the Draft Grapevine Lake Master Plan (Master Plan) and Environmental Assessment (EA) for public comment.

### Project Description

Grapevine Dam and Lake Project (Project) consists of 15,685 acres fee simple owned lands and 2,163 acres of flowage easement. The fee acres include 8,742 acres of land and 6,943 acres of water at the normal or conservation pool elevation of 535.0 feet National Geodetic Vertical Datum of 1929. The Project has approximately 60 miles of shoreline. The U.S. Army Corps of Engineers (USACE) operates and maintains the dam and associated facilities and administers the Federal lands and flowage easements comprising the Project through a combination of direct management and leases for park and recreation purposes. The lake and dam provide a multi-purpose reservoir for flood risk management, water supply, recreation, and fish and wildlife management within the Trinity River Basin.

The USACE has proposed the Grapevine 2022 Master Plan to replace the 1971 Master Plan and 2001 supplement to guide the stewardship of natural and cultural resources and make provisions for outdoor recreation facilities and opportunities on federal land associated with Grapevine Lake. The Master Plan guides the efficient and cost-effective development, management, and use of Project lands and provides for the stewardship and sustainability of the Project's resources for the benefit of present and future generations. The Master Plan presents an inventory and analysis of Project resources, resource goals and objectives, land classification, and a management plan for each land use classification. The Master Plan is intended to serve as a comprehensive land and recreation management guide with an effective life of approximately 25 years.

As a result of stakeholder input and assessing Project resources, the proposed land classifications include Project operations (196 acres), High Density Recreation (HDR) (2,599 acres), Environmentally Sensitive Areas (ESA) (4,479 acres), and 1,470 acres of Multiple Resource Management Lands (MRML) which are sub-classified as Low Density Recreation (LDR) (211 acres) and Wildlife Management (WM) (1,259 acres). Proposed water surface classifications of the permanent pool (6,943 acres) include Restricted (29 acres), Designated No-Wake (693 acres), and Open Recreation (6,221

To manage and conserve the natural and cultural resources of Texas and to provide hunting, fishing and outdoor recreation opportunities for the use and enjoyment of present and future generations.

Commissioners

Arch "Beaver" Applin, III  
Chairman  
Lake Jackson

Dick Scott  
Vice-Chairman  
Wimberley

James E. Abell  
Kilgore

Oliver J. Bell  
Cleveland

Paul L. Foster  
El Paso

Anna B. Galo  
Laredo

Jeffery D. Hildebrand  
Houston

Robert L. "Bobby" Patton, Jr.  
Fort Worth

Travis B. "Blake" Rowling  
Dallas

Lee M. Bass  
Chairman-Emeritus  
Fort Worth

T. Dan Friedkin  
Chairman-Emeritus  
Houston

-----

Carter P. Smith  
Executive Director

4200 SMITH SCHOOL ROAD  
AUSTIN, TEXAS 78744-3291  
512.389.4800  
www.tpwd.texas.gov

Figure F.28 Comment from Texas Parks and Wildlife Department (Page 1 of 4)

Lake Manager  
Page 2  
June 14, 2022

acres). The Master Plan also designates 20 utility corridors that incorporate or run parallel to an existing easement to accommodate future utilities or expansions.

The EA evaluated the No Action Alternative and the Proposed Action Alternative. The EA indicates that the USACE has chosen the Proposed Action Alternative to adopt and implement the 2022 Master Plan because the proposed action would meet regional goals associated with good stewardship of land, water, and recreational resources, would address identified recreational trends, and would allow for continued use and development of Project lands without violating national policies or public laws.

As the state agency with primary responsibility for protecting the state's fish and wildlife resources and in accordance with the authority granted by Parks and Wildlife Code (PWC) section 12.0011, TPWD has a role in reviewing the environmental impacts of federal actions in Texas in association with the National Environmental Policy Act of 1969. TPWD offers the following comments and recommendations regarding the Master Plan and EA.

#### **Section 2.2.4 Threatened and Endangered Species**

Page 2-19 of the Master Plan indicates that the state listed threatened Texas heelsplitter (*Potamilus amphichaenus*) occurrence within Grapevine Lake is considered rare because the TPWD Texas Natural Diversity Database (TXNDD) occurrence record was from 1975. Please note that the Mussels of Texas Database managed by Texas A&M Natural Resources Institute indicates two occurrences dated 1998 and 2012 of Texas heelsplitter within Lake Grapevine.

An additional resource for considering the potential presence of state or federal listed mussels is the updated 2021 Texas Freshwater Mussel Survey Protocol which assigns a group number to waterways to dictate the type of mussel survey that would be needed when conducting disturbances or construction. The Texas Freshwater Mussel Survey Protocol was updated in October 2021 to streamline an applicant's coordination with both the TPWD and USFWS whenever a project has potential to impact freshwater mussels while ensuring the needs of both agencies are met. The protocol and .kmz file for the stream grouping layer can be found on the USFWS library collections webpage [Texas Freshwater Mussels Sampling Protocol, https://www.fws.gov/library/collections/texas-freshwater-mussel-sampling-protocol](https://www.fws.gov/library/collections/texas-freshwater-mussel-sampling-protocol).

The stream groupings that occur at the Grapevine Lake Project include Groups 3, 4, and 5. Group 3 is assigned to Denton Creek downstream of the Project dam. Group 3 consists of small and medium stream reaches that are known to or may be inhabited by state listed freshwater mussel species, but presence of federally listed freshwater mussel species is not anticipated. Group 4 is assigned to Grapevine Lake. Group 4 consists of large stream reaches that are known to or may be inhabited by state listed freshwater mussel species, but presence of federally listed freshwater mussel species is not anticipated. Group 5 is assigned to Denton Creek upstream of Grapevine Lake. Group 5 consists of streams where no federal or state listed freshwater mussels occur, but mussels are known to occur; or perennial streams where it is anticipated that live freshwater mussels may occur, but presence or diversity have not been confirmed.

**Figure F.29 Comment from Texas Parks and Wildlife Department (Page 2 of 4)**

**Recommendation:** In addition to the TXNDD data, TPWD recommends referring to the Mussels of Texas Database and Texas Freshwater Mussel Survey Protocol Stream Groupings when determining the potential for Texas heelsplitter to occur within the Project area.

#### **Table 8.2 Reclassification Proposals**

Table 8.2 of the Master Plan and Table 2-2 of the EA describe areas that are proposed with a shift in classification from the previous plan, other than a simple change in nomenclature. Some of the entries indicate that hunters should reference the most recent TPWD public hunting maps for public hunting areas as well as rules and regulations. Current public hunting maps for TPWD do not include Grapevine Lake, and the public hunting maps for Grapevine Lake appear to be USACE maps according to the USACE website for Grapevine Lake. Entries on the tables that include the statement are:

- 73 acres ESA to WM
- 188 acres Intense Recreation to WM
- 69 acres LDR to WM
- 463 acres LDR/WMA to WM
- 1,486 acres WMA to ESA

**Recommendation:** TPWD recommends updating Table 8.2 of the Master Plan and Table 2-2 of the EA for hunters to reference the most recent USACE public hunting maps for public hunting areas as well as USACE and TPWD rules and regulations.

#### **Typographical Errors and Non-Substantial Comments**

Master Plan page 2-16: In the second paragraph, there is an “and” where there should be an “are”. The correct scientific term “stellata” was incorrectly autocorrected to “stellate”. The sentence should read, “What areas that are not prairies are dominated by junipers, post oaks (*Quercus stellata*), and blackjack oaks (*Quercus marilandica*).”

Master Plan page 2-16: In the second to last paragraph, “completion” should likely be “competition”. The sentence should read, “Other factors include fragmentation of once continuous habitat into smaller land holdings; competition for food and cover with livestock;”

Master Plan page 2-18: The text and Table 2.3 indicates that the least tern is a federally listed species that could be found within Grapevine Lake, with a 2019A USFWS reference, and referring to a 2020 Master Plan. This is a 2022 Master Plan. The information in the text and Table 2.3 does not reflect the document’s 2022 USFWS IPaC reference in Appendix C which is absent of the least tern. There is also an additional paragraph describing least tern habitat and potential for occurrence. The least tern is delisted and should be removed from this section of the Master Plan.

Master Plan page 2-19: The third paragraph indicates that the TPWD 2020 Annotated County Lists of Rare Species for the area of Grapevine Lake are in Appendix C. Appendix C does not contain the TPWD county lists. Please access the Rare,

**Figure F.30 Comment from Texas Parks and Wildlife Department (Page 3 of 4)**

Lake Manager  
Page 4  
June 14, 2022

Threatened, and Endangered Species of Texas by County (RTEST) lists on the TPWD RTEST webpage for inclusion in Appendix C and update the reference to 2022.

Master Plan page 3-2: The first paragraph of *Section 3.3 Resource Objectives* indicates that the Master Plan objectives are consistent with the management objectives of the cities of Grapevine and Fort Worth at the distinct parcels of USACE land they manage under lease. Section 5.3 of the Master Plan indicates recreation areas operated through lease agreements with many different cities or recreational partners, but the City of Fort Worth does not appear to hold a lease at Grapevine Lake.

Master Plan page 3-2: The last paragraph includes Roberts in the name of Grapevine Lake.

Master Plan pages 4-1 through 4-7: Pagination error, pages 4-1 through 4-7 are missing.

TPWD supports the proposed action alternative of the EA and revisions to the Master Plan. TPWD agrees with the EA that the land classifications of the Master Plan provide a balance between public use, both intensive and passive, and natural resources conservation and that the land classes and utility corridors refine areas for appropriate activities. The Master Plan would create a balance between recreational opportunity and stewardship of the natural resources at Grapevine Lake. Thank you for conserving the fish and wildlife resources of Texas and considering TPWD's input on the Master Plan and EA. If you have any questions, please contact me at (903) 322-5001 or [Karen.Hardin@tpwd.texas.gov](mailto:Karen.Hardin@tpwd.texas.gov).

Sincerely,



Karen B. Hardin  
Wildlife Habitat Assessment Program  
Wildlife Division

kbh/48601(43370)

**Figure F.31 Comment from Texas Parks and Wildlife Department (Page 4 of 4)**



*Response to Texas Parks and Wildlife Department*

The USACE appreciates the thorough review and comments from TPWD. The USACE has added the recent sightings of the threatened Texas heelsplitter mussel and referenced the Mussels of Texas Database managed by Texas A&M Natural Resources Institute. The database will be referenced for future reports for projects where threatened or endangered mussels could occur. The Texas Freshwater Mussel Sampling Protocol Stream Groupings was referenced and will be included in future reports as well.

The Least Tern was delisted since the Master Plan revision was started, and it has been removed from the Final Master Plan. Other comments regarding errors or omissions have been noted and corrected for the Final Master Plan and Environmental Assessment as well.