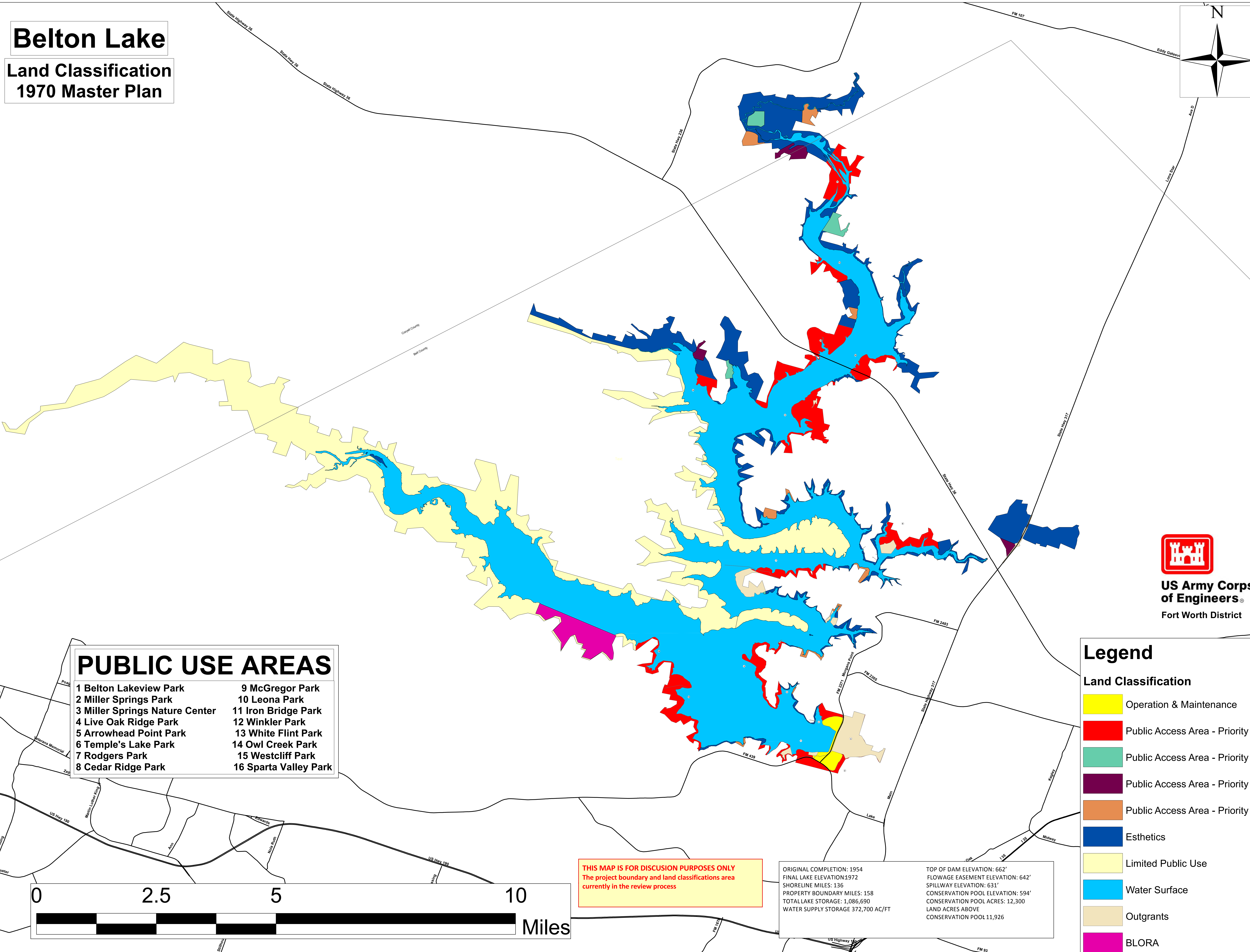
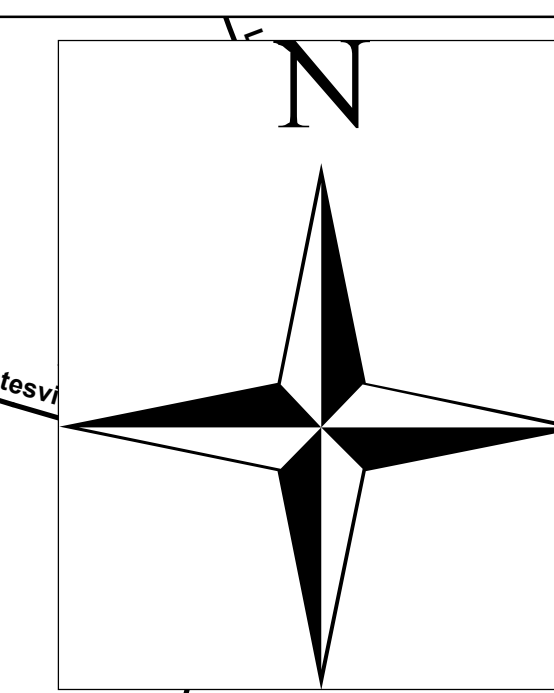


# Belton Lake

## Land Classification 1970 Master Plan



**US Army Corps  
of Engineers®**  
Fort Worth District

### Legend

- Land Classification**
- Operation & Maintenance
  - Public Access Area - Priority 1
  - Public Access Area - Priority 2
  - Public Access Area - Priority 3
  - Public Access Area - Priority 4
  - Esthetics
  - Limited Public Use
  - Water Surface
  - Outgrants
  - BLORA

### PUBLIC USE AREAS

- |                                |                       |
|--------------------------------|-----------------------|
| 1 Belton Lakeview Park         | 9 McGregor Park       |
| 2 Miller Springs Park          | 10 Leona Park         |
| 3 Miller Springs Nature Center | 11 Iron Bridge Park   |
| 4 Live Oak Ridge Park          | 12 Winkler Park       |
| 5 Arrowhead Point Park         | 13 White Flint Park   |
| 6 Temple's Lake Park           | 14 Owl Creek Park     |
| 7 Rodgers Park                 | 15 Westcliff Park     |
| 8 Cedar Ridge Park             | 16 Sparta Valley Park |

THIS MAP IS FOR DISCUSSION PURPOSES ONLY  
The project boundary and land classifications area  
currently in the review process

ORIGINAL COMPLETION: 1954  
FINAL LAKE ELEVATION: 1972  
SHORELINE MILES: 136  
PROPERTY BOUNDARY MILES: 158  
TOTAL LAKE STORAGE: 1,086,690  
WATER SUPPLY STORAGE 372,700 AC/FT

TOP OF DAM ELEVATION: 662'  
FLOWAGE EASEMENT ELEVATION: 642'  
SPILLWAY ELEVATION: 631'  
CONSERVATION POOL ELEVATION: 594'  
CONSERVATION POOL ACRES: 12,300  
LAND ACRES ABOVE  
CONSERVATION POOL: 11,926

