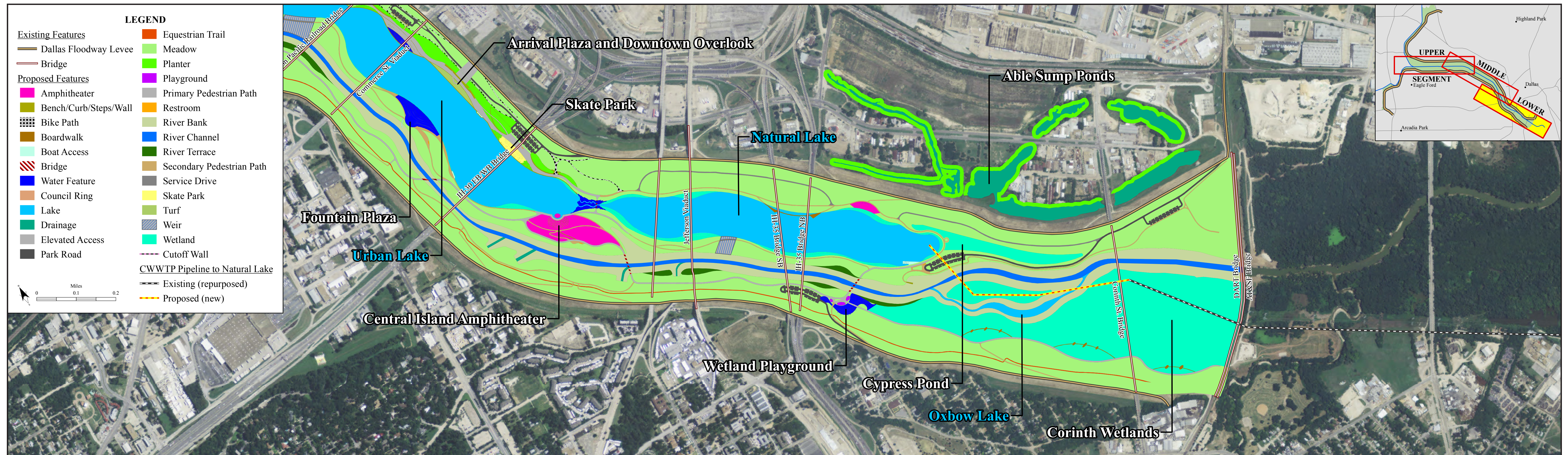


Balanced Vision Plan (BVP): Proposed Ecosystem and Recreation Enhancements (Lower Segment)



Plan View of River Meanders



Artist Depiction

LAKES

The BVP includes the construction of two off-channel terraced lakes—the Natural and Urban Lakes - set approximately 20 feet above the level of the Trinity River channel, located east of the Trinity River and adjacent to the East Levee. A third lake, West Dallas Lake, would cover approximately 123 acres. All three lakes would encourage lake recreation, including canoeing, sailing, rowing, and fishing.



Artist Depiction

EMERGENT WETLANDS



Artist Depiction

AQUATIC HABITAT

A variety of wetland areas would be constructed to improve water quality, provide habitat, and also provide aesthetic, recreational, and educational opportunities for visitors. The Corinth Wetlands are an example wetland area, as are the “tailwater” wetlands proposed for the area where the Urban Lake would enter the Trinity River.

