

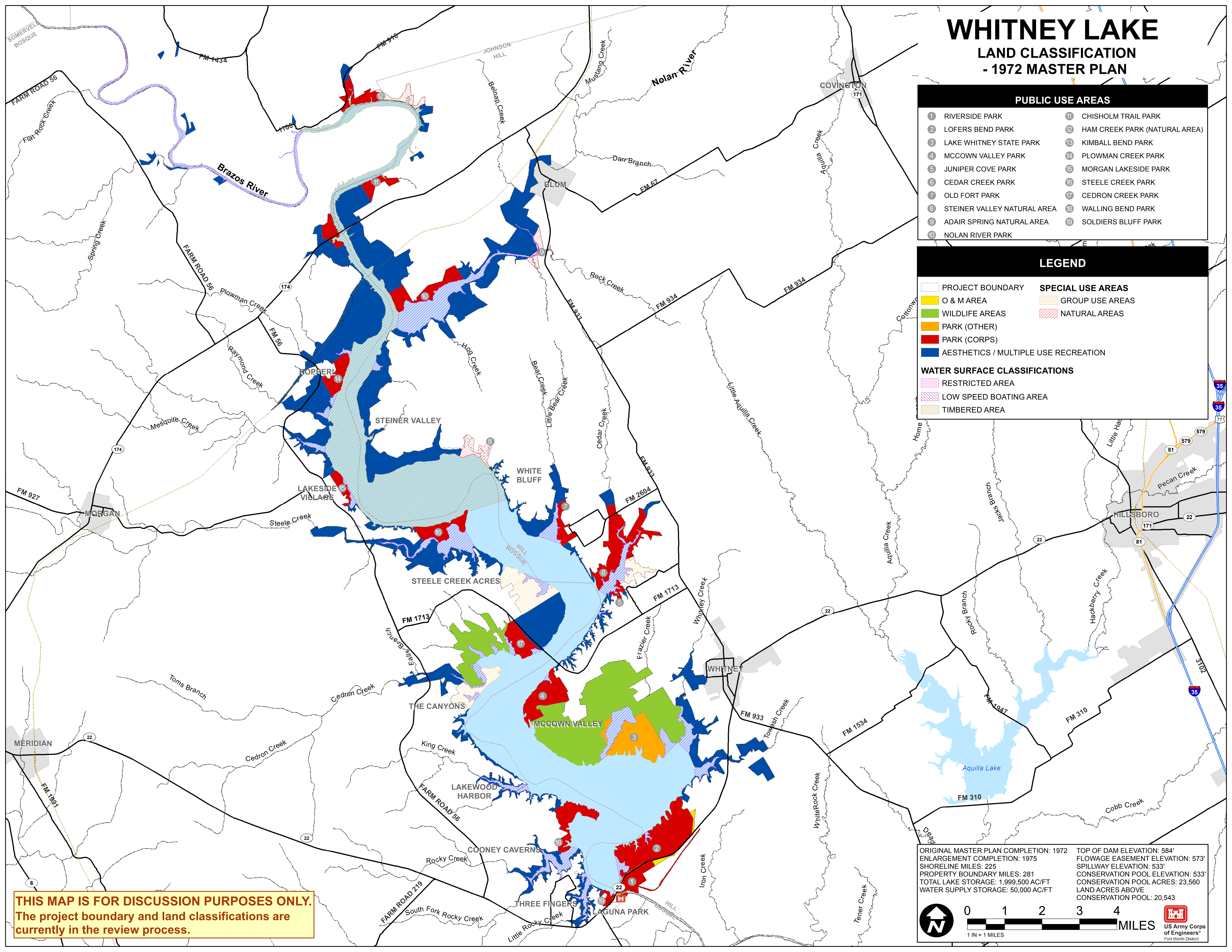
# WHITNEY LAKE

## LAND CLASSIFICATION

### - 1972 MASTER PLAN

PUBLIC USE AREAS	
1 RIVERSIDE PARK	11 CHISHOLM TRAIL PARK
2 LOFERS BEND PARK	12 HAM CREEK PARK (NATURAL AREA)
3 LAKE WHITNEY STATE PARK	13 KIMBALL BEND PARK
4 MCCOWN VALLEY PARK	14 PLOWMAN CREEK PARK
5 JUNIPER COVE PARK	15 MORGAN LAKESIDE PARK
6 CEDAR CREEK PARK	16 STEELE CREEK PARK
7 OLD FORT PARK	17 CEDRON CREEK PARK
8 STEINER VALLEY NATURAL AREA	18 WALLING BEND PARK
9 ADAIR SPRING NATURAL AREA	19 SOLDIERS BLUFF PARK
10 NOLAN RIVER PARK	

LEGEND	
[Dashed Line] PROJECT BOUNDARY	[Diagonal Lines] SPECIAL USE AREAS
[Yellow] O & M AREA	[Diagonal Lines] GROUP USE AREAS
[Green] WILDLIFE AREAS	[Diagonal Lines] NATURAL AREAS
[Orange] PARK (OTHER)	
[Red] PARK (CORPS)	
[Blue] AESTHETICS / MULTIPLE USE RECREATION	
WATER SURFACE CLASSIFICATIONS	
[Pink Hatched] RESTRICTED AREA	
[Blue Hatched] LOW SPEED BOATING AREA	
[Orange Hatched] TIMBERED AREA	



**THIS MAP IS FOR DISCUSSION PURPOSES ONLY.**  
 The project boundary and land classifications are currently in the review process.

ORIGINAL MASTER PLAN COMPLETION: 1972	TOP OF DAM ELEVATION: 584'
ENLARGEMENT COMPLETION: 1975	FLOWAGE EASEMENT ELEVATION: 573'
SHORELINE MILES: 225	SPILLWAY ELEVATION: 533'
PROPERTY BOUNDARY MILES: 281	CONSERVATION POOL ELEVATION: 533'
TOTAL LAKE STORAGE: 1,999,500 AC/FT	CONSERVATION POOL ACRES: 23,560
WATER SUPPLY STORAGE: 50,000 AC/FT	LAND ACRES ABOVE CONSERVATION POOL: 20,543

0 1 2 3 4 MILES  
 1 IN = 1 MILES

US Army Corps of Engineers Fort Worth District