

RAIL CONSTRUCTION TYPE	PERMANENT IMPACTS	TEMPORARY IMPACTS	OTHER	MAP SYMBOLOLOGY
CUT	EMERGENT WETLAND	EMERGENT WETLAND	LIMITS OF DISTURBANCE (CONSTRUCTION FOOTPRINT)	CULVERT FLOW - RCB
EMBANKMENT	FORESTED WETLAND	POND	PERMANENT UTILITIES IMPACTS	CULVERT FLOW - OPEN BOTTOM
RETAIN FILL	POND	STREAMS	TEMPORARY UTILITIES IMPACTS	
RETAIN CUT	SCRUB/SHRUB WETLAND	OTHER IMPACTS	ROADWAY IMPACTS/EMERG. RESR. (ERMSA)	
VIADUCT	STREAMS	CONVERSION WETLAND	PIER PILE CAP LOCATIONS	

**PLAN**

- NOTES:
- POTENTIALLY NON-JURISDICTIONAL WATERBODIES DO NOT INCLUDE IMPACT QUANTITIES.
  - P = PERMANENT IMPACT
  - T = TEMPORARY IMPACT
  - C = CONVERSION
  - ES = EPHEMERAL STREAM
  - IS = INTERMITTENT STREAM
  - PS = PERENNIAL STREAM
  - TEMPORARY, PERMANENT AND CONVERSION IMPACTS ARE SUMMED UP IN ONE CALLOUT BOX FOR EACH FEATURE.
  - UTILITY, TEMPORARY CONSTRUCTION AND CONSTRUCTION ALLOWANCE IMPACTS DO NOT REFERENCE A DETAIL.
  - ONLY APPLIES IN USACE FORT WORTH DISTRICT.

DESIGNED BY <b>H. MYERS</b>	DATE <b>NOV. 2019</b>
DRAWN BY <b>M. KINZER</b>	
CHECKED BY <b>R. ALDREDGE</b>	
IN CHARGE <b>R. ZARATE</b>	

DALLAS TO HOUSTON  
HIGH-SPEED RAIL  
APPLICANT: TCR  
SWF-2011-00483

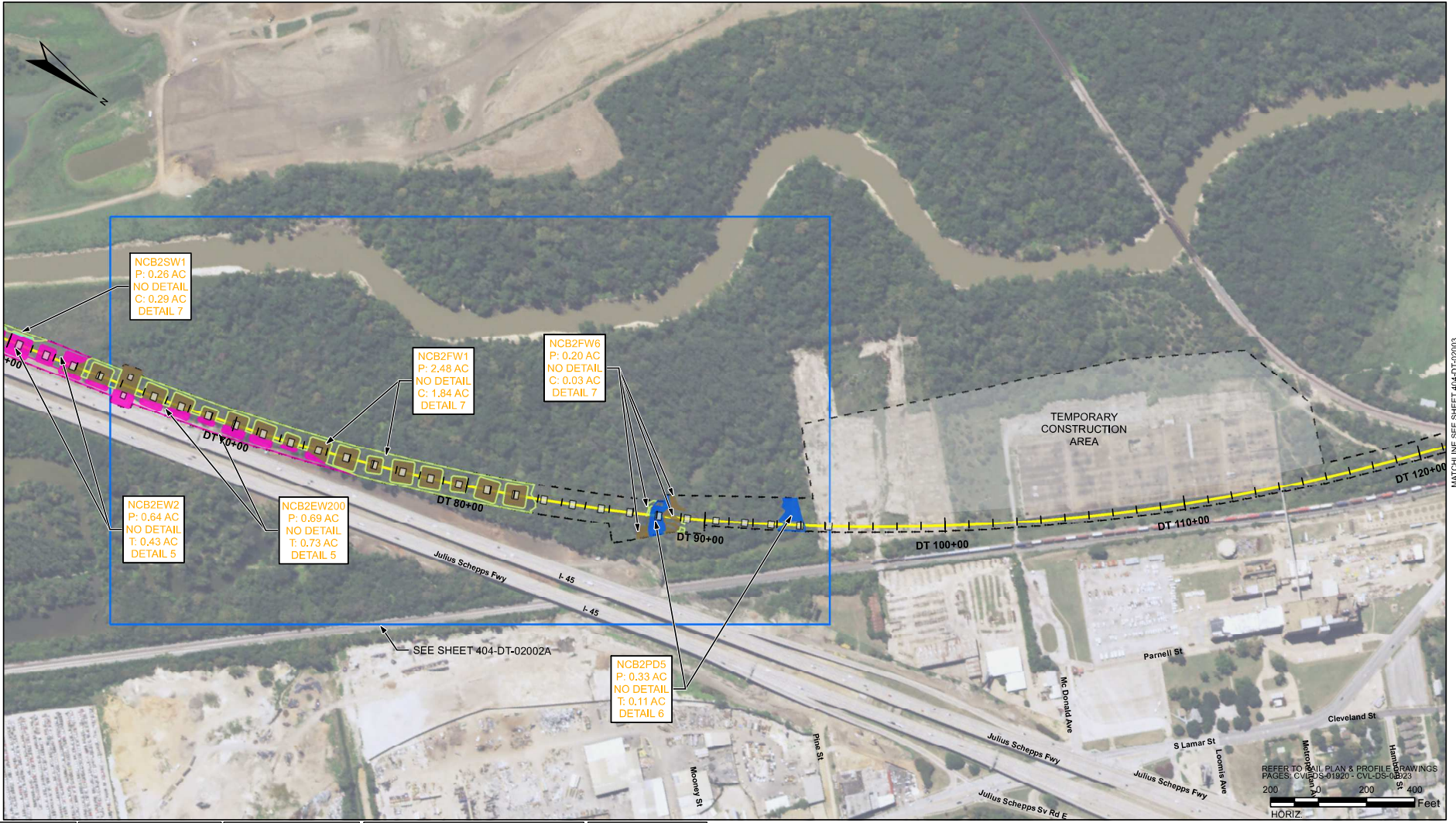
**ARUP**  
 Arup Texas, Inc.  
 10370 Northwest Ave., Suite 475  
 Houston, Texas 77042 USA  
 Tel (713) 783 2787 Fax (713) 434 1467  
 www.arup.com  
 Texas Registered Engineering Firm: F-1590

**FRESE NICHOLS**  
 2714 North Haskell Ave., Suite 3300  
 Dallas, Texas 75204  
 Tel (214) 217 2200 Fax (214) 217 2201  
 www.fnco.com  
 Texas Registered Engineering Firm: F-2144

DALLAS TO HOUSTON HIGH-SPEED RAIL  
 FINAL CONCEPTUAL ENGINEERING  
  
 1408 South Lamar Street, Suite 1022, Dallas, Texas 75215

Drawing Title  
**DALLAS TERMINAL SEGMENT**  
**PLAN VIEW (FRA SEG. 1)**  
**STA DT 10+00 TO DT 62+22**

Scale  
**AS SHOWN**  
 Drawing Status  
**NOT FOR CONSTRUCTION**  
 Job No. 234180  
 Drawing No. 404-DT-02001  
 Rev. 02



RAIL CONSTRUCTION TYPE	PERMANENT IMPACTS	TEMPORARY IMPACTS	OTHER	MAP SYMBOLOLOGY
CUT	EMERGENT WETLAND	EMERGENT WETLAND	LIMITS OF DISTURBANCE (CONSTRUCTION FOOTPRINT)	CULVERT FLOW - RCB
EMBANKMENT	FORESTED WETLAND	POND	PERMANENT UTILITIES IMPACTS	CULVERT FLOW - OPEN BOTTOM
RETAIN FILL	POND	STREAMS	TEMPORARY UTILITIES IMPACTS	
RETAIN CUT	SCRUB/SHRUB WETLAND	OTHER IMPACTS	ROADWAY IMPACTS/EMERG. RESP. (ERMSA)	
VIADUCT	STREAMS	CONVERSION WETLAND	PIER PILE CAP LOCATIONS	

**PLAN**

- NOTES:
- POTENTIALLY NON-JURISDICTIONAL WATERBODIES DO NOT INCLUDE IMPACT QUANTITIES.
  - P = PERMANENT IMPACT
  - T = TEMPORARY IMPACT
  - C = CONVERSION
  - ES = EPHEMERAL STREAM
  - IS = INTERMITTENT STREAM
  - PS = PERENNIAL STREAM
  - TEMPORARY, PERMANENT AND CONVERSION IMPACTS ARE SUMMED UP IN ONE CALLOUT BOX FOR EACH FEATURE.
  - UTILITY, TEMPORARY CONSTRUCTION AND CONSTRUCTION ALLOWANCE IMPACTS DO NOT REFERENCE A DETAIL.
  - ONLY APPLIES IN USACE FORT WORTH DISTRICT.

DESIGNED BY <b>H. MYERS</b>	DATE <b>NOV. 2019</b>
DRAWN BY <b>M. KINZER</b>	
CHECKED BY <b>R. ALDREDGE</b>	
IN CHARGE <b>R. ZARATE</b>	

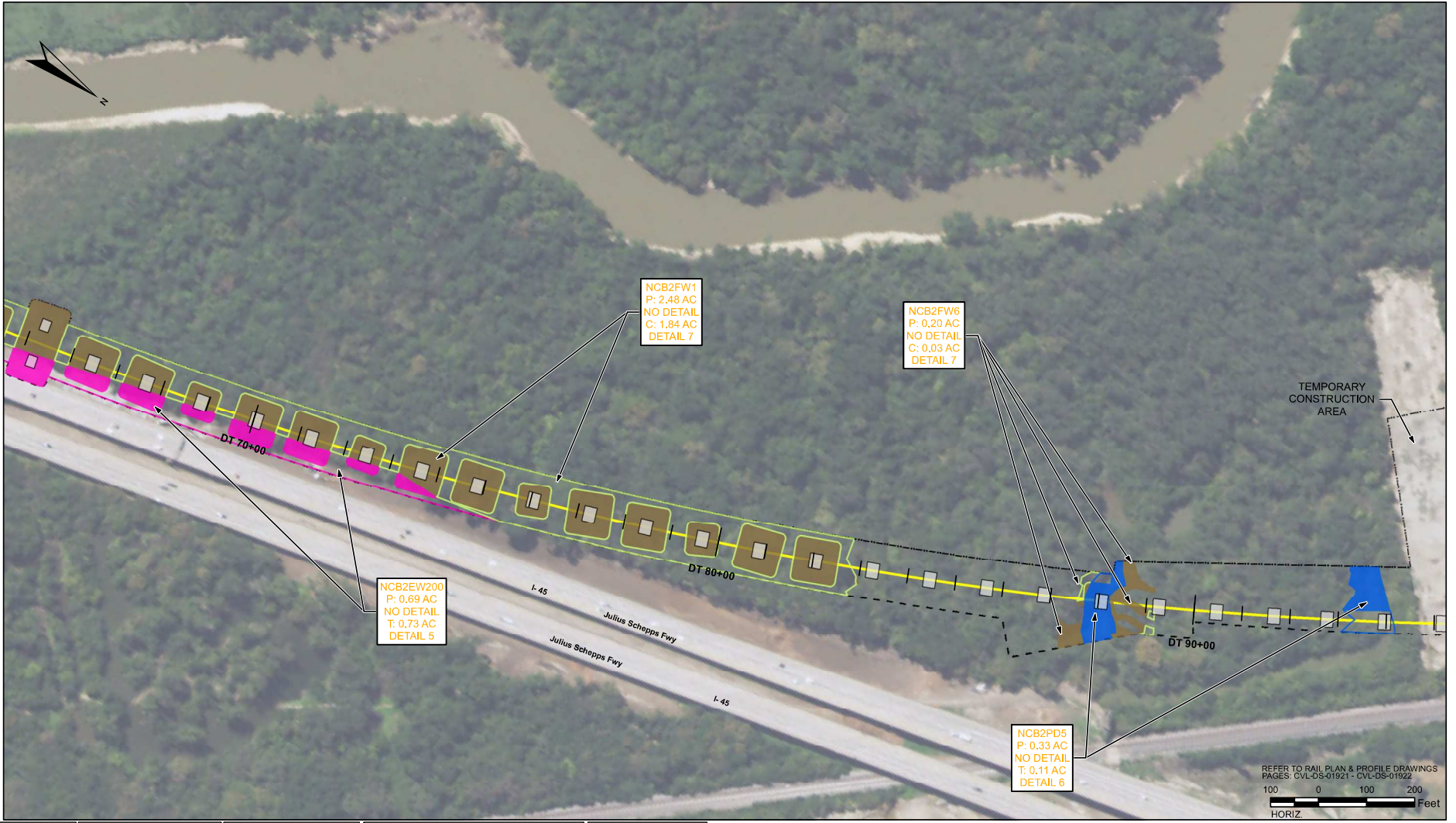
DALLAS TO HOUSTON  
HIGH-SPEED RAIL  
APPLICANT: TCR  
SWF-2011-00483

**ARUP**  
Arup Texas, Inc.  
10370 Westwood Ave., Suite 475  
Houston, Texas 77042 USA  
Tel (713) 783 2787 Fax (713) 434 1467  
www.arup.com  
Texas Registered Engineering Firm: F-1590

**FRESE NICHOLS**  
2711 North Haskell Ave., Suite 3300  
Dallas, Texas 75204  
Tel (214) 217 2200 Fax (214) 217 2201  
www.fnco.com  
Texas Registered Engineering Firm: F-2144

DALLAS TO HOUSTON HIGH-SPEED RAIL  
FINAL CONCEPTUAL ENGINEERING  
**TEXAS CENTRAL**  
1408 South Lamar Street, Suite 1022, Dallas, Texas 75215

Drawing Title: **DALLAS TERMINAL SEGMENT**  
Scale: **AS SHOWN**  
Drawing Status: **NOT FOR CONSTRUCTION**  
PLAN VIEW (FRA SEG. 1)  
STA DT 59+75 TO DT 121+16  
Job No: 234180 Drawing No: 404-DT-02002 Rev: 02



RAIL CONSTRUCTION TYPE	PERMANENT IMPACTS	TEMPORARY IMPACTS	OTHER	MAP SYMBOLOLOGY
CUT	EMERGENT WETLAND	EMERGENT WETLAND	LIMITS OF DISTURBANCE (CONSTRUCTION FOOTPRINT)	CULVERT FLOW - RGB
EMBANKMENT	FORESTED WETLAND	POND	PERMANENT UTILITIES IMPACTS	CULVERT FLOW - OPEN BOTTOM
RETAIN FILL	POND	STREAMS	TEMPORARY UTILITIES IMPACTS	
RETAIN CUT	SCRUB/SHRUB WETLAND	OTHER IMPACTS	ROADWAY IMPACTS/EMERG. RESR. (ERMSA)	
VIADUCT	STREAMS	CONVERSION WETLAND	PIER PILE CAP LOCATIONS	

**PLAN**

- NOTES:
- POTENTIALLY NON-JURISDICTIONAL WATERBODIES DO NOT INCLUDE IMPACT QUANTITIES.
  - P = PERMANENT IMPACT
  - T = TEMPORARY IMPACT
  - C = CONVERSION
  - ES = EPHEMERAL STREAM
  - IS = INTERMITTENT STREAM
  - PS = PERENNIAL STREAM
  - TEMPORARY, PERMANENT AND CONVERSION IMPACTS ARE SUMMED UP IN ONE CALLOUT BOX FOR EACH FEATURE.
  - UTILITY, TEMPORARY CONSTRUCTION AND CONSTRUCTION ALLOWANCE IMPACTS DO NOT REFERENCE A DETAIL.
  - ONLY APPLIES IN USACE FORT WORTH DISTRICT.

DESIGNED BY <b>H. MYERS</b>	DATE <b>NOV. 2019</b>
DRAWN BY <b>M. KINZER</b>	
CHECKED BY <b>R. ALDREDGE</b>	
IN CHARGE <b>R. ZARATE</b>	

DALLAS TO HOUSTON  
HIGH-SPEED RAIL  
APPLICANT: TCR  
SWF-2011-00483

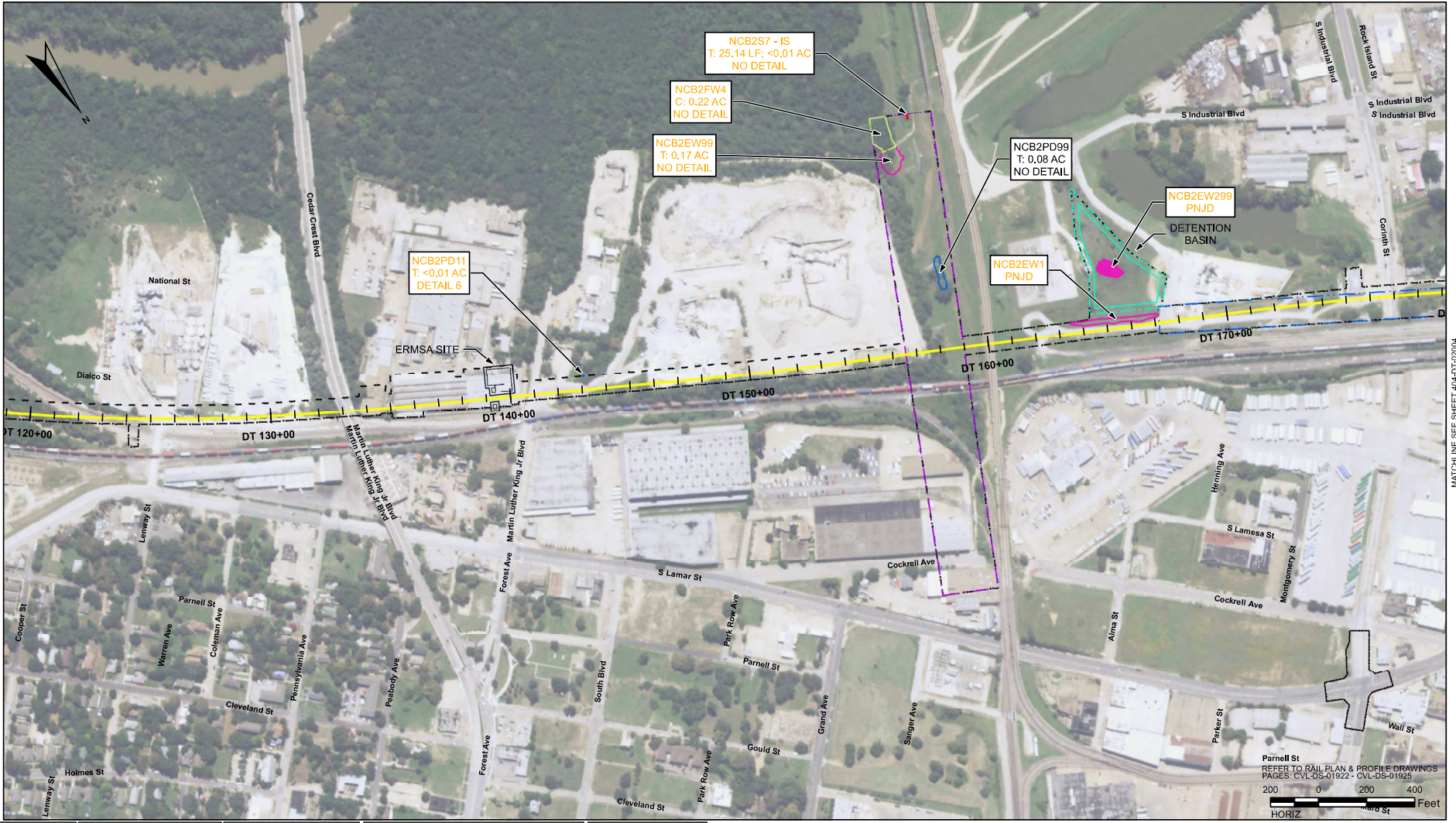
**ARUP**  
 Arup Texas, Inc.  
 10376 Westwood Ave., Suite 475  
 Houston, Texas 77042 USA  
 Tel (713) 783 2787 Fax (713) 434 1467  
 www.arup.com  
 Texas Registered Engineering Firm: F-1590

**FRESE NICHOLS**  
 2711 North Haskell Ave., Suite 3300  
 Dallas, Texas 75204  
 Tel (214) 217 2200 Fax (214) 217 2201  
 www.fnec.com  
 Texas Registered Engineering Firm: F-2144

DALLAS TO HOUSTON HIGH-SPEED RAIL  
FINAL CONCEPTUAL ENGINEERING  
  
 1408 South Lamar Street, Suite 1022, Dallas, Texas 75215

Drawing Title  
**DALLAS TERMINAL SEGMENT**  
 PLAN VIEW (FRA SEG. 1)  
 STA DT 64+52 TO DT 95+20

Scale <b>AS SHOWN</b>	Drawing Status <b>NOT FOR CONSTRUCTION</b>
JOB No <b>234180</b>	Drawing No <b>404-DT-02002A</b>
Rev <b>02</b>	



MATCHLINE SEE SHEET 404-DT-02002

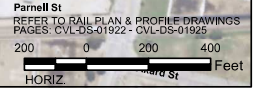
MATCHLINE SEE SHEET 404-DT-02004

RAIL CONSTRUCTION TYPE	PERMANENT IMPACTS	TEMPORARY IMPACTS	OTHER
CUT	EMERGENT WETLAND	EMERGENT WETLAND	LIMITS OF DISTURBANCE (CONSTRUCTION FOOTPRINT)
EMBANKMENT	FORESTED WETLAND	POND	PERMANENT UTILITIES IMPACTS
RETAIN FILL	POND	STREAMS	TEMPORARY UTILITIES IMPACTS
RETAIN CUT	SCRUB/SHRUB WETLAND	OTHER IMPACTS	ROADWAY IMPACTS/EMERG. RESP. (ERMSA)
VIADUCT	STREAMS	CONVERSION WETLAND	PIER PILE CAP LOCATIONS

MAP SYMBOLOLOGY
CULVERT FLOW - RCB
CULVERT FLOW - OPEN BOTTOM

**PLAN**

- NOTES:
- POTENTIALLY NON-JURISDICTIONAL WATERBODIES DO NOT INCLUDE IMPACT QUANTITIES.
  - P = PERMANENT IMPACT
  - T = TEMPORARY IMPACT
  - C = CONVERSION
  - ES = EPHEMERAL STREAM
  - IS = INTERMITTENT STREAM
  - PS = PERENNIAL STREAM
  - TEMPORARY, PERMANENT AND CONVERSION IMPACTS ARE SUMMED UP IN ONE CALLOUT BOX FOR EACH FEATURE.
  - UTILITY, TEMPORARY CONSTRUCTION AND CONSTRUCTION ALLOWANCE IMPACTS DO NOT REFERENCE A DETAIL.
  - ONLY APPLIES IN USACE FORT WORTH DISTRICT.



DESIGNED BY <b>H. MYERS</b>	FINAL, REVISION 1
DRAWN BY <b>M. KINZER</b>	FINAL, REVISION 2
CHECKED BY <b>R. ALDREDGE</b>	
IN CHARGE <b>R. ZARATE</b>	
DATE <b>NOV. 2019</b>	

DALLAS TO HOUSTON  
HIGH-SPEED RAIL  
APPLICANT: TCR  
SWF-2011-00483

**ARUP**  
Arup Texas, Inc.  
10370 Westwood Ave., Suite 475  
Houston, Texas 77042 USA  
Tel (713) 783 2787 Fax (713) 434 1467  
www.arup.com  
Texas Registered Engineering Firm: F-1590

**FREES NICHOLS**  
2711 North Haskell Ave., Suite 3300  
Dallas, Texas 75204  
Tel (214) 217 2200 Fax (214) 217 2201  
www.frees-nichols.com  
Texas Registered Engineering Firm: F-2144

DALLAS TO HOUSTON HIGH-SPEED RAIL  
FINAL CONCEPTUAL ENGINEERING  
**TEXAS CENTRAL**  
1408 South Lamar Street, Suite 1022, Dallas, Texas 75215

Drawing Title: **DALLAS TERMINAL SEGMENT**  
Scale: **AS SHOWN**  
Drawing Status: **NOT FOR CONSTRUCTION**  
PLAN VIEW (FRA SEG. 1)  
STA DT 118+88 TO DT 179+16  
Job No: 234180 Drawing No: 404-DT-02003 Rev: 02



MATCHLINE SEE SHEET 404-DT-02003

MATCHLINE SEE SHEET 404-DT-02005



RAIL CONSTRUCTION TYPE	PERMANENT IMPACTS	TEMPORARY IMPACTS	OTHER
CUT	EMERGENT WETLAND	EMERGENT WETLAND	LIMITS OF DISTURBANCE (CONSTRUCTION FOOTPRINT)
EMBANKMENT	FORESTED WETLAND	POND	PERMANENT UTILITIES IMPACTS
RETAIN FILL	POND	STREAMS	TEMPORARY UTILITIES IMPACTS
RETAIN CUT	SCRUB/SHRUB WETLAND	OTHER IMPACTS	ROADWAY IMPACTS/EMERG. RESP. (ERMSA)
VIADUCT	STREAMS	CONVERSION WETLAND	PIER PILE CAP LOCATIONS

MAP SYMBOLOLOGY
CULVERT FLOW - RCB
CULVERT FLOW - OPEN BOTTOM

- PLAN**
- NOTES:
- POTENTIALLY NON-JURISDICTIONAL WATERBODIES DO NOT INCLUDE IMPACT QUANTITIES.
  - P = PERMANENT IMPACT
  - T = TEMPORARY IMPACT
  - C = CONVERSION
  - ES = EPHEMERAL STREAM
  - IS = INTERMITTENT STREAM
  - PS = PERENNIAL STREAM
  - TEMPORARY, PERMANENT AND CONVERSION IMPACTS ARE SUMMED UP IN ONE CALLOUT BOX FOR EACH FEATURE.
  - UTILITY, TEMPORARY CONSTRUCTION AND CONSTRUCTION ALLOWANCE IMPACTS DO NOT REFERENCE A DETAIL.
  - ONLY APPLIES IN USACE FORT WORTH DISTRICT.

DESIGNED BY <b>H. MYERS</b>
DRAWN BY <b>M. KINZER</b>
CHECKED BY <b>R. ALDREDGE</b>
IN CHARGE <b>R. ZARATE</b>
DATE <b>NOV. 2019</b>

DALLAS TO HOUSTON  
HIGH-SPEED RAIL  
APPLICANT: TORR  
SWF-2011-00483

**ARUP**  
Arup Texas, Inc.  
10376 Westwood Ave., Suite 475  
Houston, Texas 77042 USA  
Tel (713) 783 2787 Fax (713) 434 1467  
www.arup.com  
Texas Registered Engineering Firm: F-1590

**FRESE NICHOLS**  
2711 North Haskell Ave., Suite 3300  
Dallas, Texas 75204  
Tel (214) 217 2200 Fax (214) 217 2201  
www.fnec.com  
Texas Registered Engineering Firm: F-2144

DALLAS TO HOUSTON HIGH-SPEED RAIL  
FINAL CONCEPTUAL ENGINEERING  
**TEXAS CENTRAL**  
1408 South Lamar Street, Suite 1022, Dallas, Texas 75215

Drawing Title  
**DALLAS TERMINAL SEGMENT 1**  
**PLAN VIEW (FRA SEG. 1)**  
**STA DT 177+70 TO DT 216+65**

Scale  
**AS SHOWN**

Drawing Status  
**NOT FOR CONSTRUCTION**

JOB No.	Drawing No.	Rev.
234180	404-DT-02004	02



REFER TO RAIL PLAN & PROFILE DRAWINGS  
 PAGES: N/A  
 0 200 400  
 HORIZ

RAIL CONSTRUCTION TYPE	PERMANENT IMPACTS	TEMPORARY IMPACTS	OTHER	MAP SYMBOLOLOGY
CUT	EMERGENT WETLAND	EMERGENT WETLAND	LIMITS OF DISTURBANCE (CONSTRUCTION FOOTPRINT)	CULVERT FLOW - RCB
EMBANKMENT	FORESTED WETLAND	POND	PERMANENT UTILITIES IMPACTS	CULVERT FLOW - OPEN BOTTOM
RETAIN FILL	POND	STREAMS	TEMPORARY UTILITIES IMPACTS	
RETAIN CUT	SCRUB/SHRUB WETLAND	OTHER IMPACTS	ROADWAY IMPACTS/EMERG. RESP. (ERMSA)	
VIADUCT	STREAMS	CONVERSION WETLAND	PIER PILE CAP LOCATIONS	

- NOTES:
- POTENTIALLY NON-JURISDICTIONAL WATERBODIES DO NOT INCLUDE IMPACT QUANTITIES.
  - P = PERMANENT IMPACT
  - T = TEMPORARY IMPACT
  - C = CONVERSION
  - ES = EPHEMERAL STREAM
  - IS = INTERMITTENT STREAM
  - PS = PERENNIAL STREAM
  - TEMPORARY, PERMANENT AND CONVERSION IMPACTS ARE SUMMED UP IN ONE CALLOUT BOX FOR EACH FEATURE.
  - UTILITY, TEMPORARY CONSTRUCTION AND CONSTRUCTION ALLOWANCE IMPACTS DO NOT REFERENCE A DETAIL.
  - ONLY APPLIES IN USACE FORT WORTH DISTRICT.

PLAN

REV	DATE	BY	CHK	APP	DESCRIPTION
					FINAL, REVISION 1
					FINAL, REVISION 2

DESIGNED BY  
**H. MYERS**  
 DRAWN BY  
**M. KINZER**  
 CHECKED BY  
**R. ALDREDGE**  
 IN CHARGE  
**R. ZARATE**  
 DATE  
**NOV. 2019**

DALLAS TO HOUSTON  
 HIGH-SPEED RAIL  
 APPLICANT: TCR  
 SWF-2011-00483



ARUP  
 Arup Texas, Inc.  
 10376 Northwest Ave., Suite 475  
 Houston, Texas 77042 USA  
 Tel (713) 783 2787 Fax (713) 434 1467  
 www.arup.com  
 Texas Registered Engineering Firm: F-1590



FRESE NICHOLS  
 2711 North Haskell Ave., Suite 3300  
 Dallas, Texas 75204  
 Tel (214) 217 2200 Fax (214) 217 2201  
 www.fnco.com  
 Texas Registered Engineering Firm: F-2144



DALLAS TO HOUSTON HIGH-SPEED RAIL  
 FINAL CONCEPTUAL ENGINEERING  
 1408 South Lamar Street, Suite 1022, Dallas, Texas 75215

Drawing Title <b>DALLAS TERMINAL SEGMENT</b>	Scale <b>AS SHOWN</b>
Drawing Status <b>NOT FOR CONSTRUCTION</b>	
Plan View (FRA SEG. 1) <b>MATCHLINE 404-DT-02004</b>	
JOB NO. 234180	Drawing No. 404-DT-02005
Rev 02	