

Whitney Lake Master Plan Revision Public Information Meeting to Present Draft Revision June 07, 2016

Billy Haferkamp
Environmental Stewardship BLM
Three Rivers Regional Office
U.S. Army Corps of Engineers
Fort Worth District



Purpose of this Meeting

- Announce the availability of the draft revision of the Whitney Lake Master Plan and accompanying Environmental Assessment.
- Highlight changes proposed in the revised Master Plan compared to the previous 1972 version.
- Provide the public and stakeholders the opportunity to meet with USACE staff to review and discuss Master Plan recommendations.
- The draft Master Plan with Environmental Assessment is available for 30-day public comment beginning today, June 7 to July 8, 2016.



Process Followed to Date

- Initial public meeting was held July 14, 2015 to announce preparation of a Master Plan Revision for Whitney Lake.
- Public and agency comments were received during a 30-day comment period from July 15 – August 14, 2015.
- All public and agency comments received were reviewed and considered in the preparation of the draft Master Plan Revision. (see Table 7.1 of the draft for comments and Government response)
- A Draft Environmental Assessment was prepared and is included in the Master Plan Revision as Appendix B.



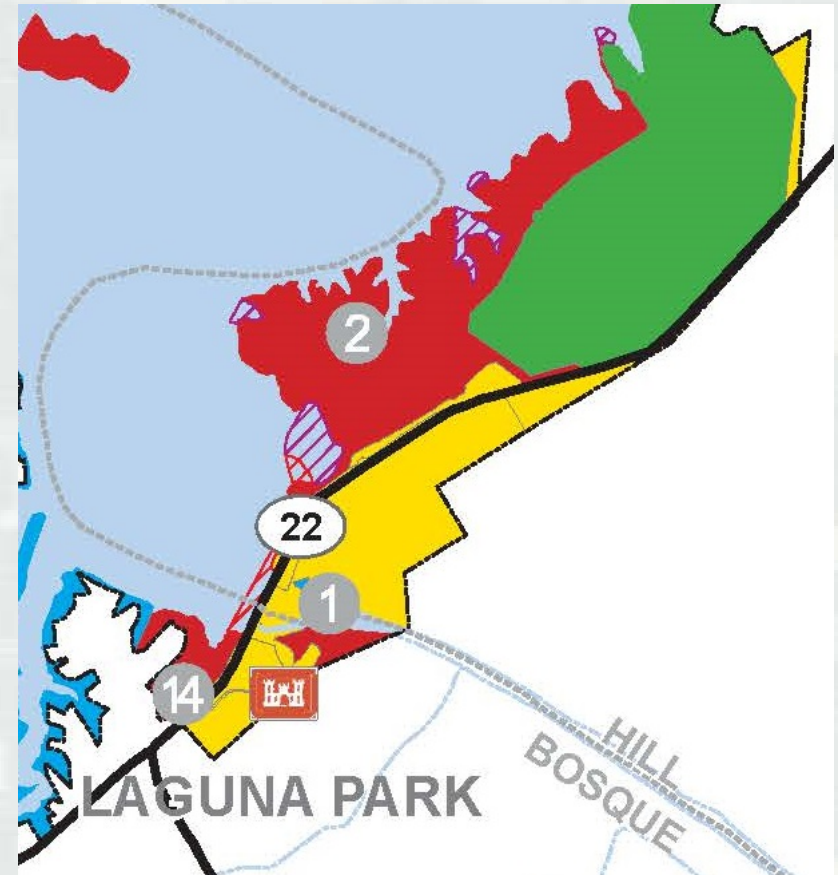
Public/Agency Comments Summary

TOPIC	COMMENTS
Trails/ATV's	<i>Increased hike and bike trails desired, in addition to trails for jeeps, motorcycles and ATV's. No ATV's are allowed on trails or anywhere on Federal land at Whitney Lake.</i>
Boat Ramps	<i>Extend length of ramps for low water conditions and update ramps and parking to facilitate easier and faster access. Most ramps have been extended as much as possible due to terrain and topography.</i>
Shoreline Use	<i>Maintained walkways or paths to the shoreline. These are allowed in certain instances and are covered in the Whitney Lake Shoreline Management Plan.</i>
Land Classification	<i>Supports undesignated lands be sold back to private ownership. All current lands have a land classification designation and are deemed essential. No future plans to sell back excess property.</i>
Day Use/Disc Golf	<i>Supports the construction of a Disc Golf course in Lofer's Bend Park. Compatible with current land classification and could be considered in future development plans.</i>



Principal Changes from Current Master Plan to Revised Plan

- Significant changes to Land Classifications
 - ▶ Old vs. New terminology
 - ▶ Historic Land Uses
 - ▶ Laws and Regulations (Endangered Species Act)
- Water Surface Designation
- Comprehensive New Management Objectives



Example of Land Classification Map

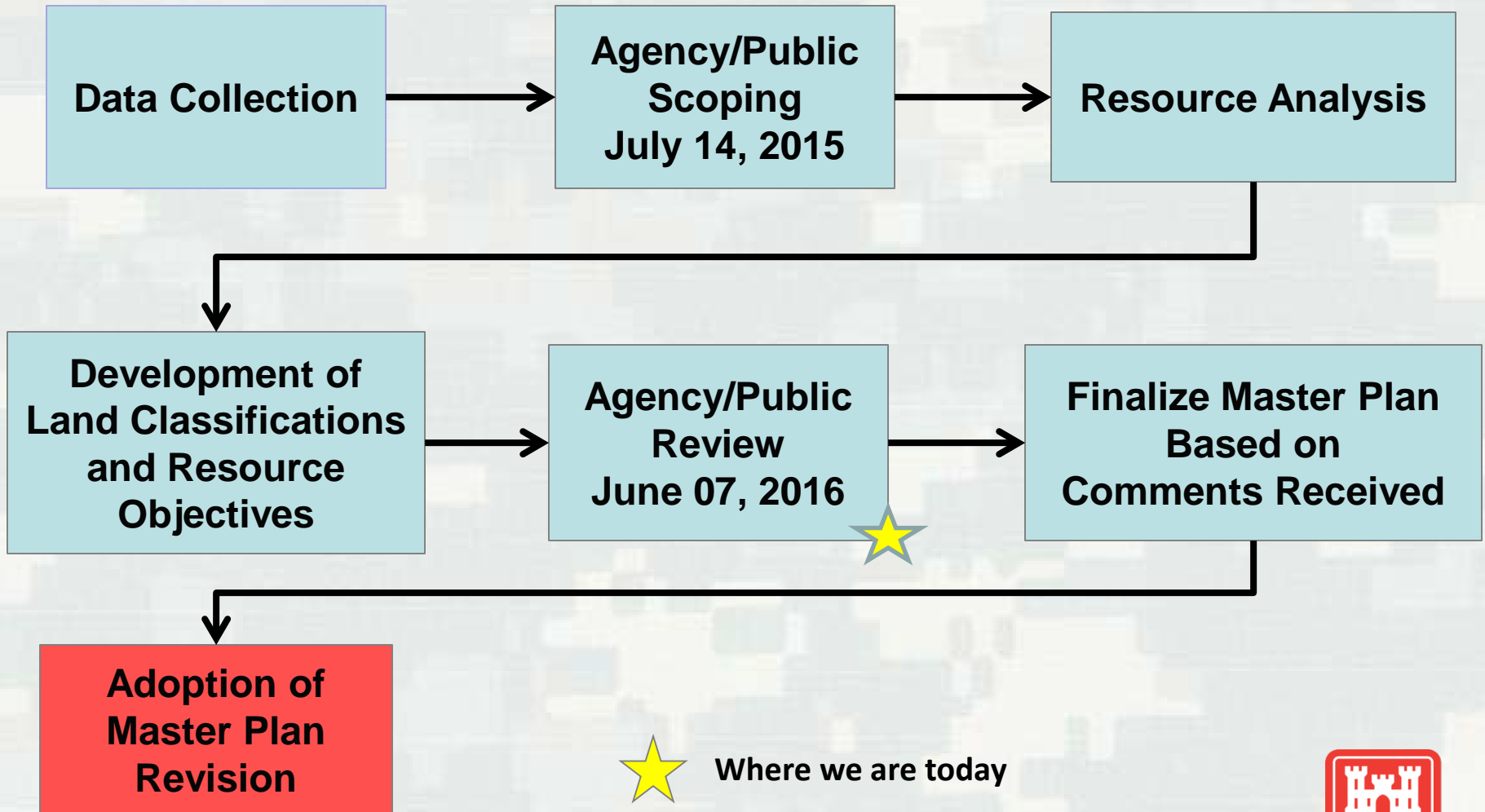


Change in Land Classifications and Acreage

1972 Land Classifications	Acreage	New Classifications	Acreage	Net Difference
Project Operations	419	Project Operations	460	41
Recreational Areas	5,049	High Density Recreation	3,608	-1441
Special Use Areas-Natural Area	565	Environmentally Sensitive Area	2,268	1703
Special Use Areas-Group Use Areas	858	Low Density Recreation	1,170	312
Wildlife Areas	3,880	Wildlife Management	16,278	12,398
Aesthetic and Multiple Use Recreation	9,776			-9,776



The Master Planning Process



Where we are today



Next Steps

Public and agency comments due on draft	July 06, 2016
Comments considered and incorporated	August 2016
Internal Review of Final Master Plan and EA	August 2016
Final Approved by District Engineer	September 2016
Notice to Public of Final Master Plan	September 2016



How to Participate

- Visit with USACE staff at conclusion of presentation.
- Review the draft Master Plan. It is posted on the USACE website provided on the comment forms. A printed copy is available at the Whitney Lake office.
- Pick up a comment form tonight and follow instructions for submitting written comments. Verbal comments cannot be considered. Comments are due by July 8, 2016.



This concludes the presentation. You are invited to meet with staff members for further discussion. Thank you for your time and willingness to participate.



BUILDING STRONG®