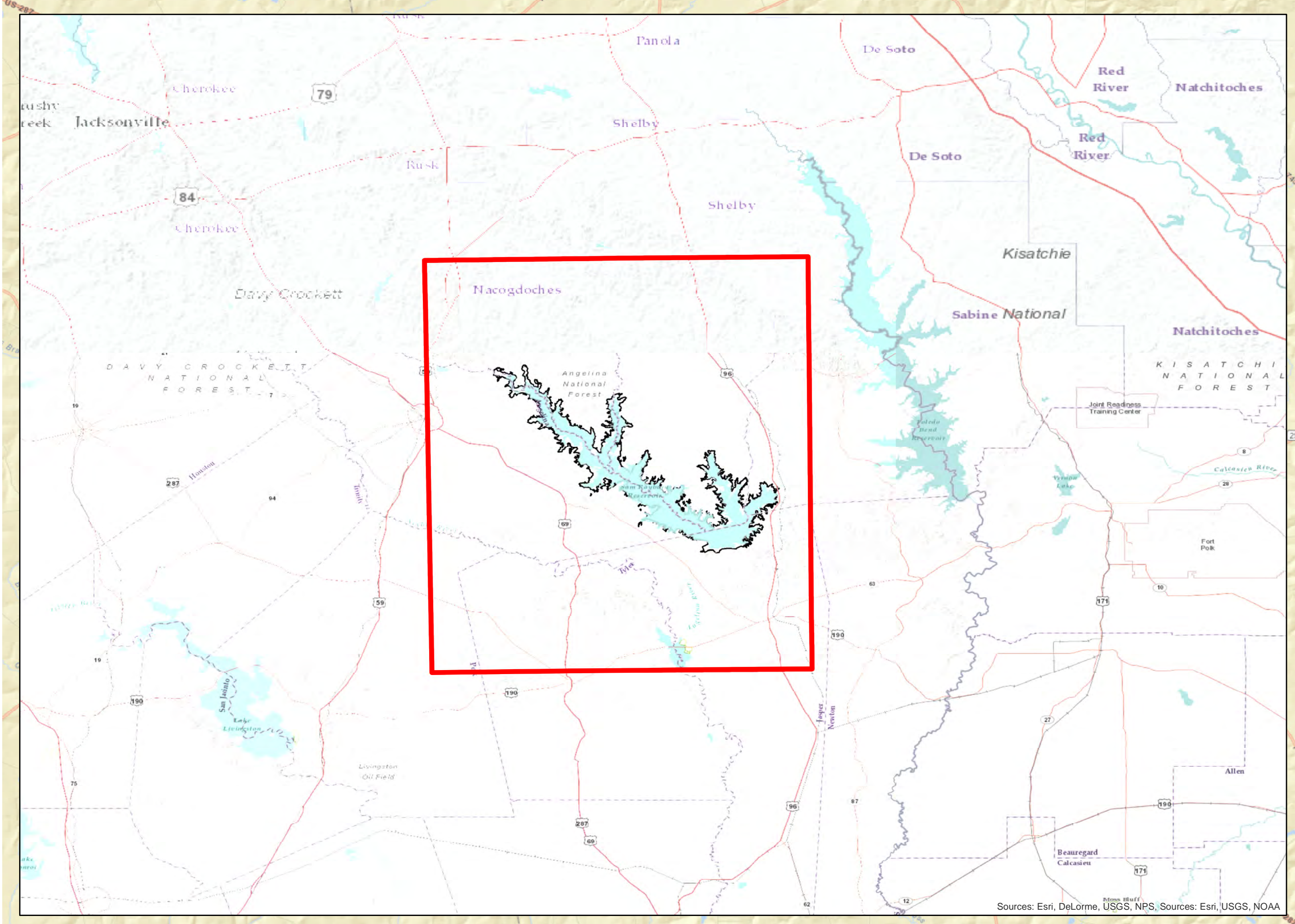
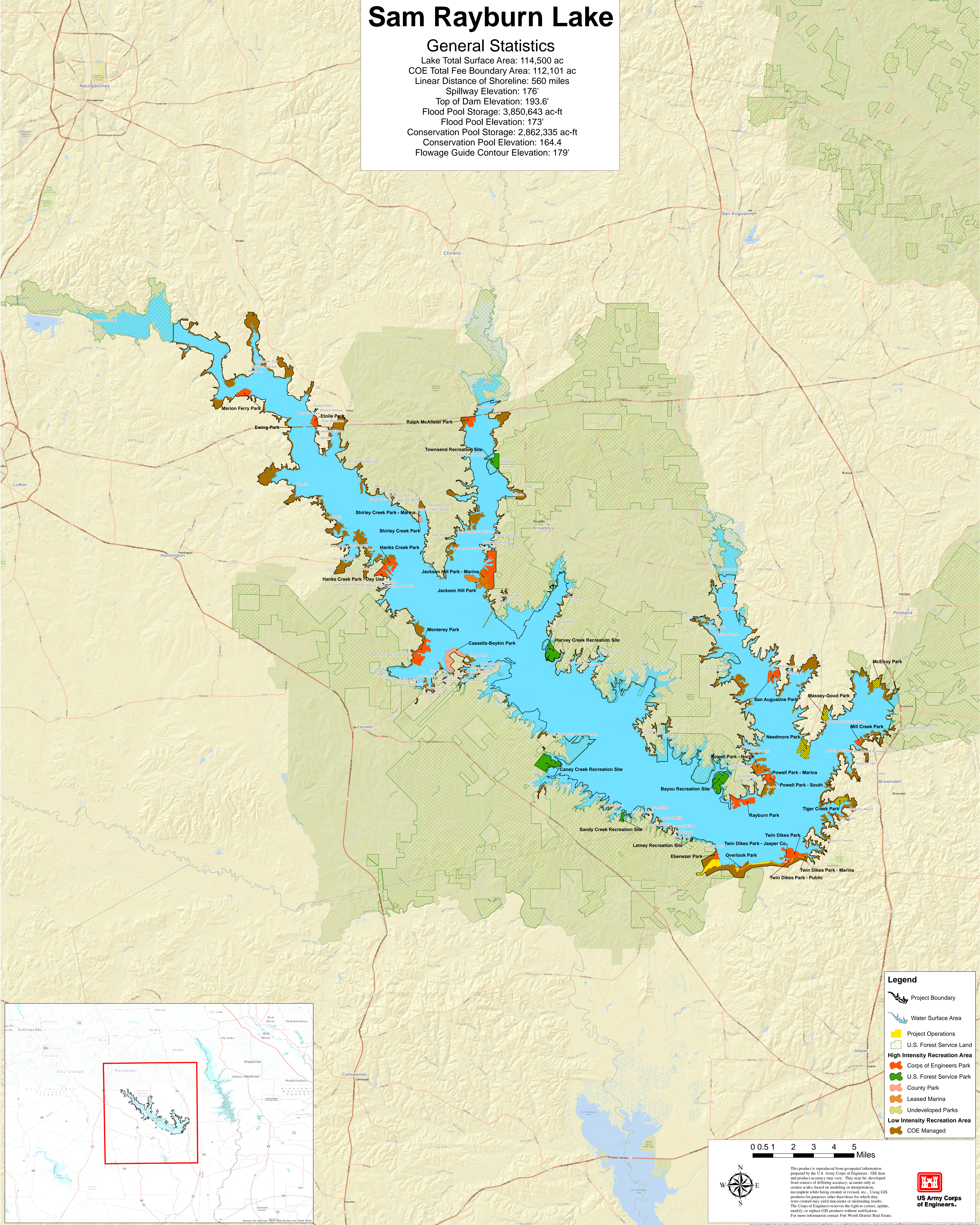


# Sam Rayburn Lake

## General Statistics

Lake Total Surface Area: 114,500 ac  
COE Total Fee Boundary Area: 112,101 ac  
Linear Distance of Shoreline: 560 miles  
Spillway Elevation: 176'  
Top of Dam Elevation: 193.6'  
Flood Pool Storage: 3,850,643 ac-ft  
Flood Pool Elevation: 173'  
Conservation Pool Storage: 2,862,335 ac-ft  
Conservation Pool Elevation: 164.4  
Flowage Guide Contour Elevation: 179'



**Legend**

- Project Boundary
- Water Surface Area
- Project Operations
- U.S. Forest Service Land
- High Intensity Recreation Area
- Corps of Engineers Park
- U.S. Forest Service Park
- County Park
- Leased Marina
- Undeveloped Parks
- Low Intensity Recreation Area
- COE Managed

0 0.5 1 2 3 4 5 Miles

This product is reproduced from geospatial information prepared by the U.S. Army Corps of Engineers. GIS data and product accuracy may vary. They may be developed from sources of differing accuracy, accurate only at certain scales, based on modeling or interpretation, incomplete while being created or revised, etc. Using GIS products for purposes other than those for which they were created may yield inaccurate or misleading results. The Corps of Engineers reserves the right to correct, update, modify, or replace GIS products without notification. For more information contact Fort Worth District Real Estate.